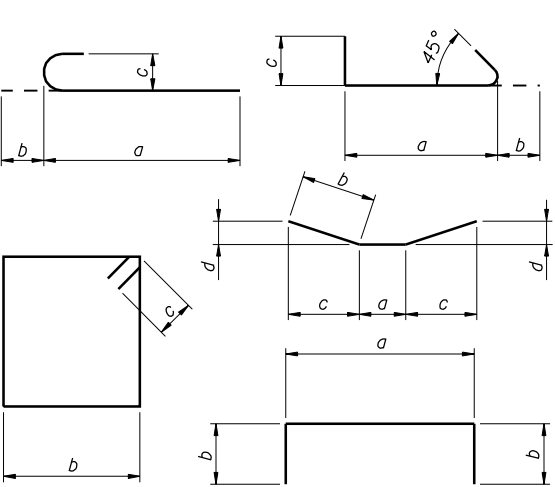
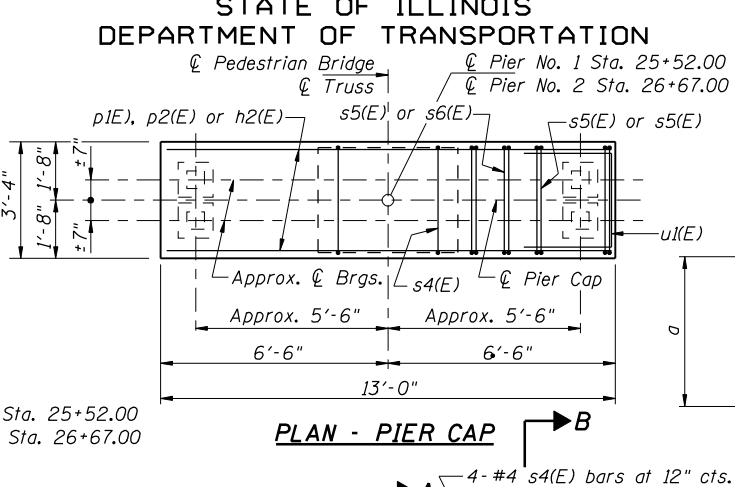
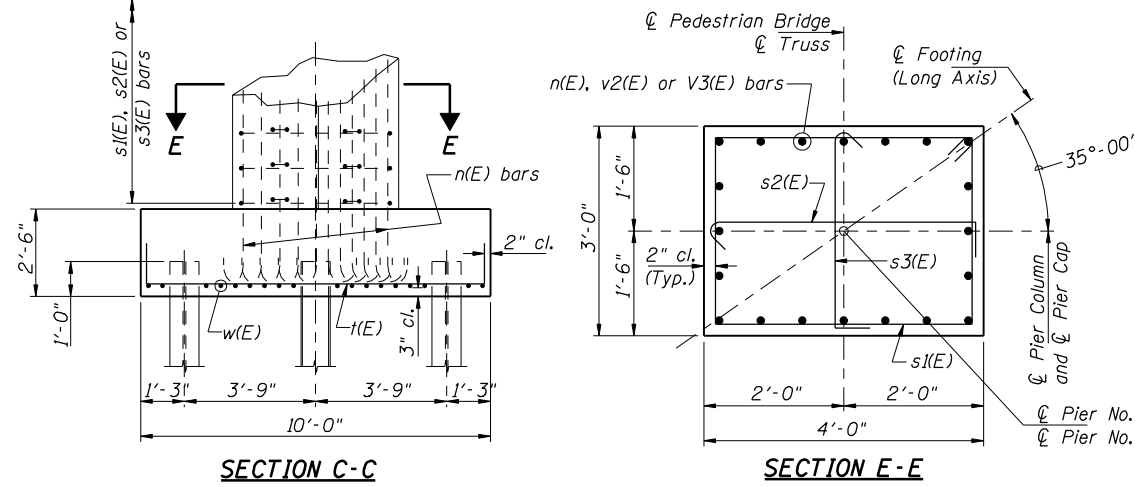


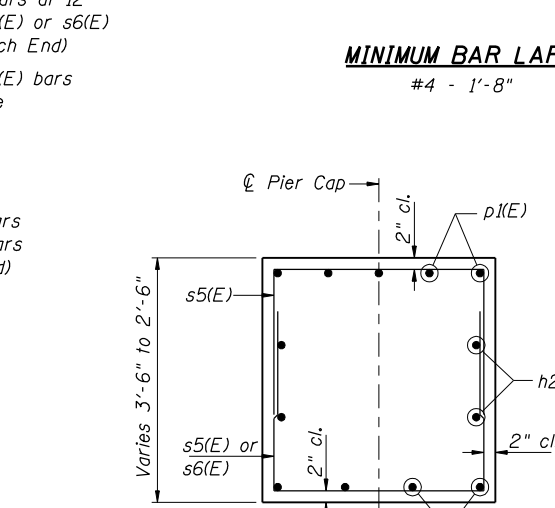
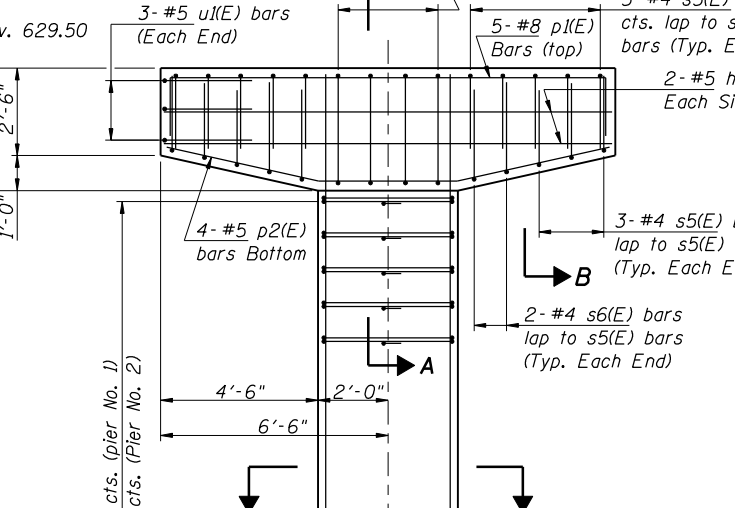
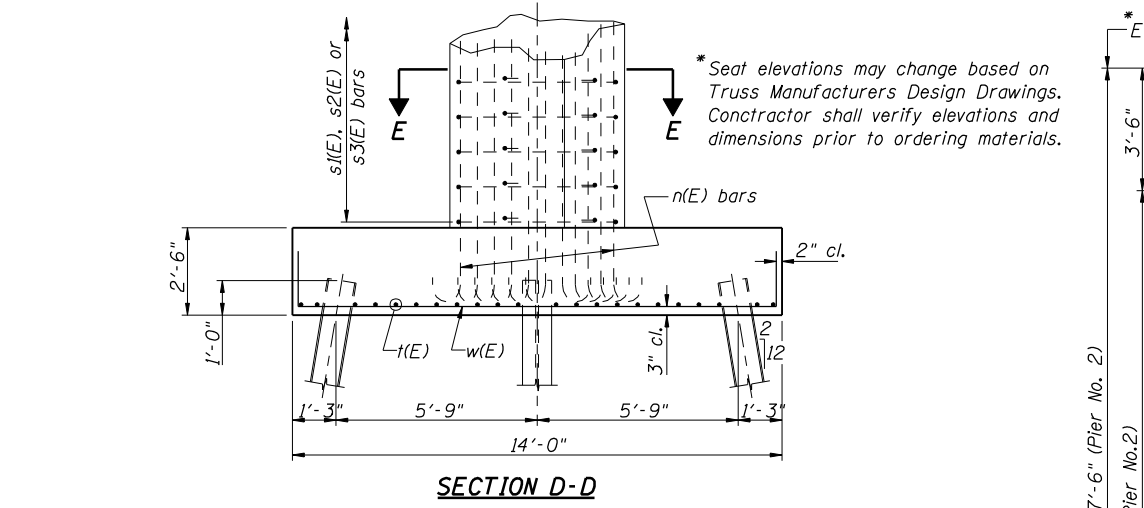
STATE OF ILLINOIS
DEPARTMENT OF TRANSPORTATION

ROUTE NO.	SECTION	COUNTY	SHEET NO.	SHEET NO.
-	*	SANGAMON	559	344
FED. ROAD DIST. NO. 7 ILLINOIS FED. AID PROJECT -				
*02-00382-02-PV CONTRACT NO. 72541				



BAR BEND TABLE

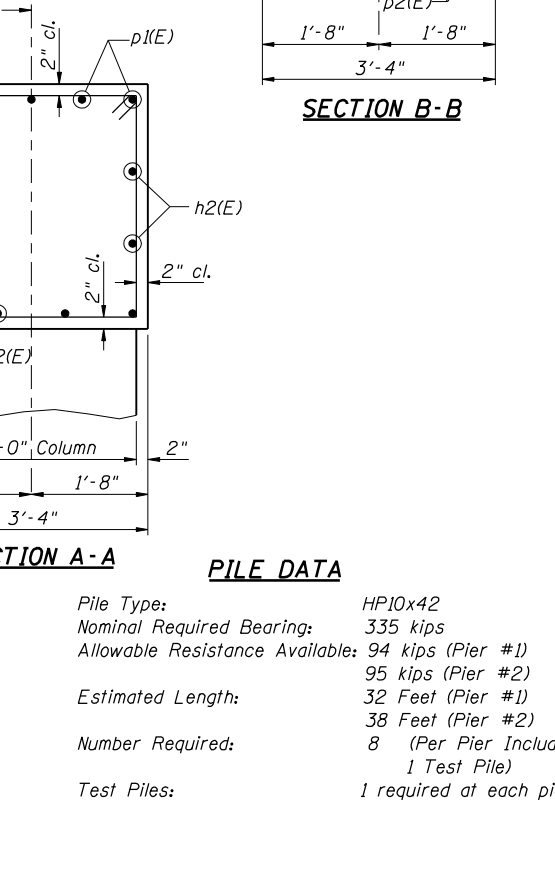
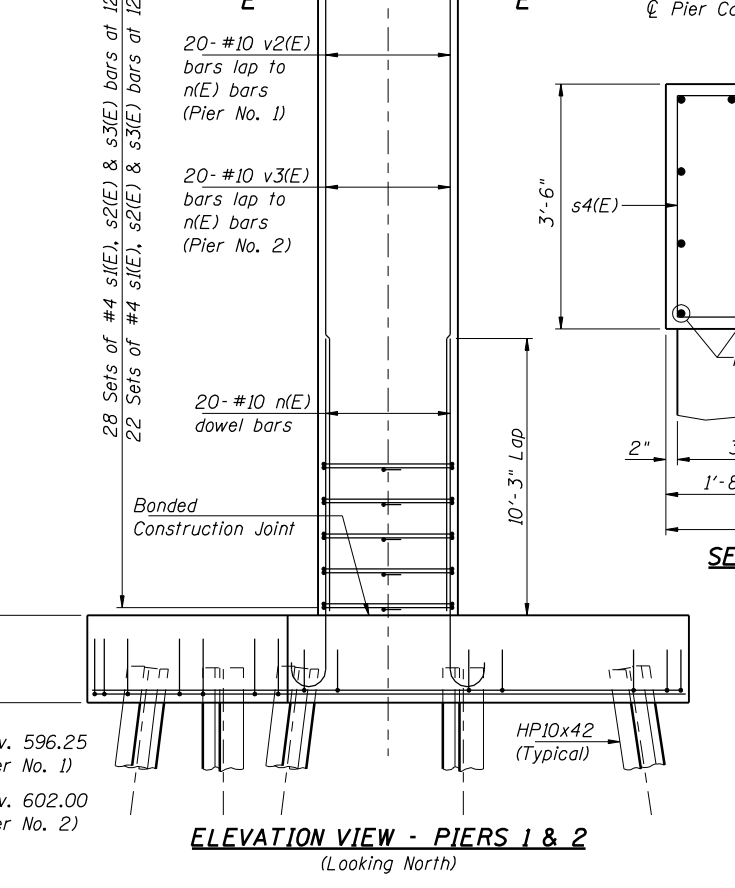
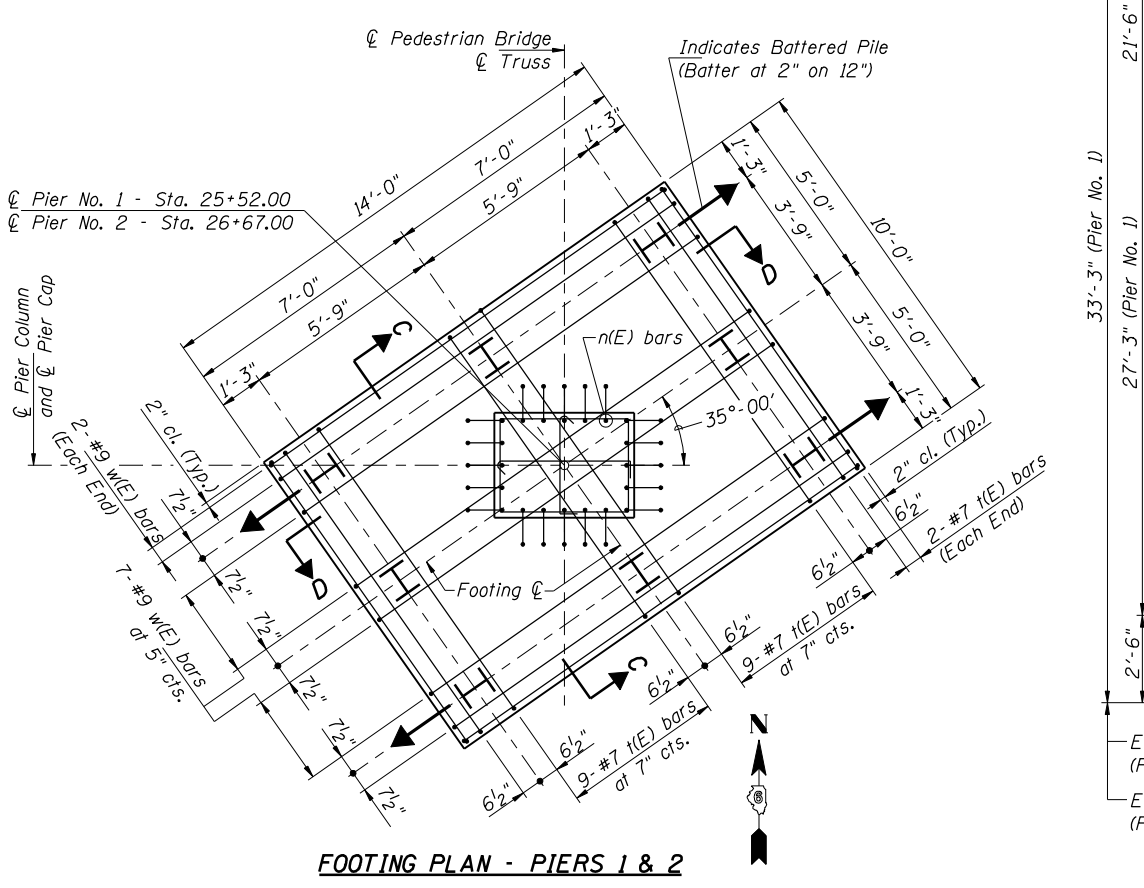
Bar	a	b	c	d	Shape
n(E)	12'-4"	1'-5"	1'-1 1/4"	-	C
p1(E)	12'-8"	1'-4"	-	-	C
p2(E)	4'-0"	4'-5 1/2"	4'-4 1/4"	0'-11 5/8"	C
s1(E)	2'-8"	3'-8"	0'-4 1/2"	-	C
s2(E)	3'-8"	0'-4 1/2"	0'-8 1/2"	-	C
s3(E)	2'-8"	0'-4 1/2"	0'-8 1/2"	-	C
s4(E)	3'-2"	3'-0"	0'-4 1/2"	-	C
s5(E)	3'-0"	2'-1"	-	-	C
s6(E)	3'-0"	2'-4"	-	-	C
t(E)	9'-8"	1'-2"	-	-	C
u1(E)	2'-11"	2'-2"	-	-	C
w(E)	13'-8"	1'-7"	-	-	C



BILL OF MATERIAL (2 PIERS)

Bar	Number	Size	Length	Shape
h2(E)	8	#5	12'-8"	C
n(E)	40	#10	13'-9"	C
p1(E)	10	#8	15'-4"	C
p2(E)	8	#5	12'-11"	C
s1(E)	50	#4	13'-5"	C
s2(E)	50	#4	4'-9"	C
s3(E)	50	#4	3'-9"	C
s4(E)	8	#4	13'-1"	C
s5(E)	32	#4	7'-2"	C
s6(E)	8	#4	7'-8"	C
t(E)	44	#7	12'-0"	C
u1(E)	12	#5	7'-3"	C
v2(E)	20	#10	30'-7"	C
v3(E)	20	#10	24'-10"	C
w(E)	36	#9	16'-10"	C

Structure Excavation	Cu. Yds.	117.7
Concrete Structures	Cu. Yds.	57.7
Reinforcement Bars, Epoxy Coated	Lbs.	11990
Furnishing Steel Piles HPI0x42	Foot	490
Driving Piles	Foot	490
Test Piles Steel HPI0x42	Each	2



PILE DATA

Pile Type:	HPI0x42
Nominal Required Bearing:	335 kips
Allowable Resistance Available:	94 kips (Pier #1) 95 kips (Pier #2)
Estimated Length:	32 Feet (Pier #1) 38 Feet (Pier #2)
Number Required:	8 (Per Pier Including 1 Test Pile)
Test Piles:	1 required at each pier

Note:
Reinforcement bars designated (E) shall be epoxy coated.
Anchor bolt design and locations are per Truss Manufacturer. The Contractor shall place top cap reinforcement to miss anchor bolt locations.

PIER DETAILS
INTERURBAN TRAIL OVER N.S. R.R.
SECTION 02-00382-02-PV
SANGAMON COUNTY
STATION 26+02.50
STRUCTURE NO. 084-7008

12/16/2006 \$FILE\$
LAYOUT M.A.M. 10/21/05
DRAWN R.C. 10/21/05
REVIEWED M.A.M. 10/24/05