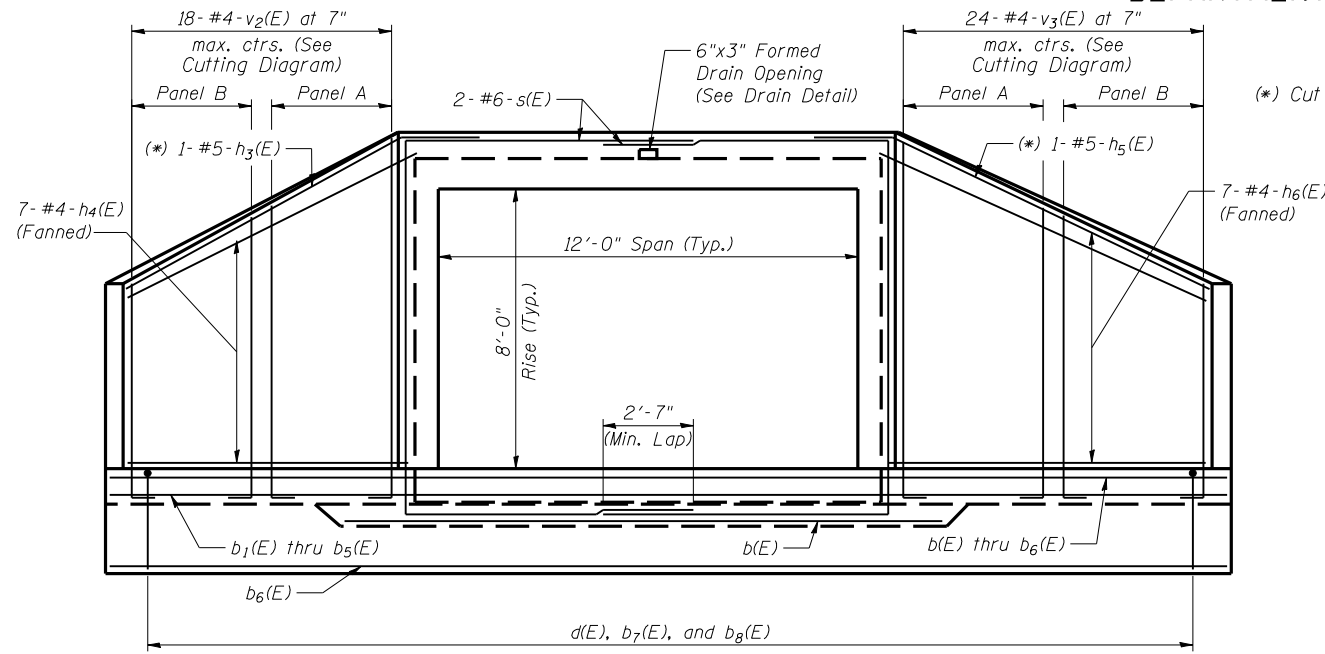


STATE OF ILLINOIS  
DEPARTMENT OF TRANSPORTATION

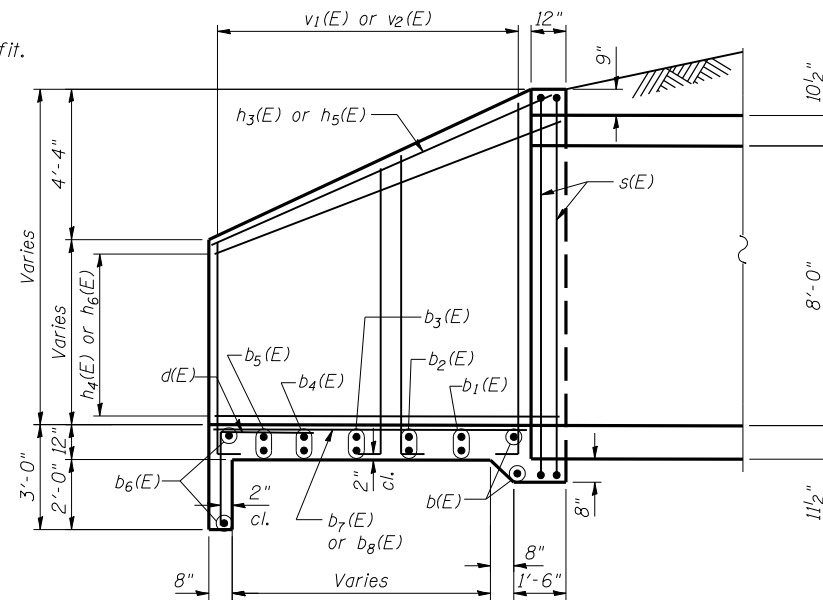
ROUTE NO.	SECTION	COUNTY	TOTAL SHEETS	SHEET NO.
US 67	115RS-3, B-2	MORGAN	42	30
FED. ROAD DIST. NO. 6		ILLINOIS	FED. AID PROJECT - ROUTE 310	

SHEET NO. 3  
7 SHEETS

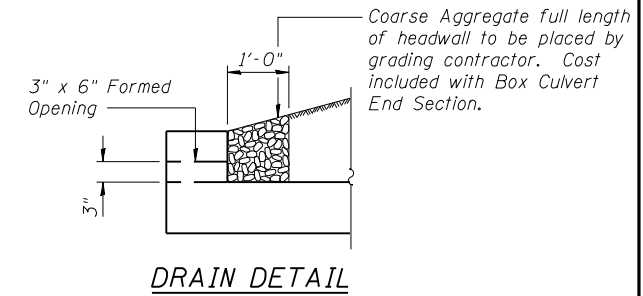


END ELEVATION

(\*) Cut or bend to fit.



SECTION A-A



DRAIN DETAIL

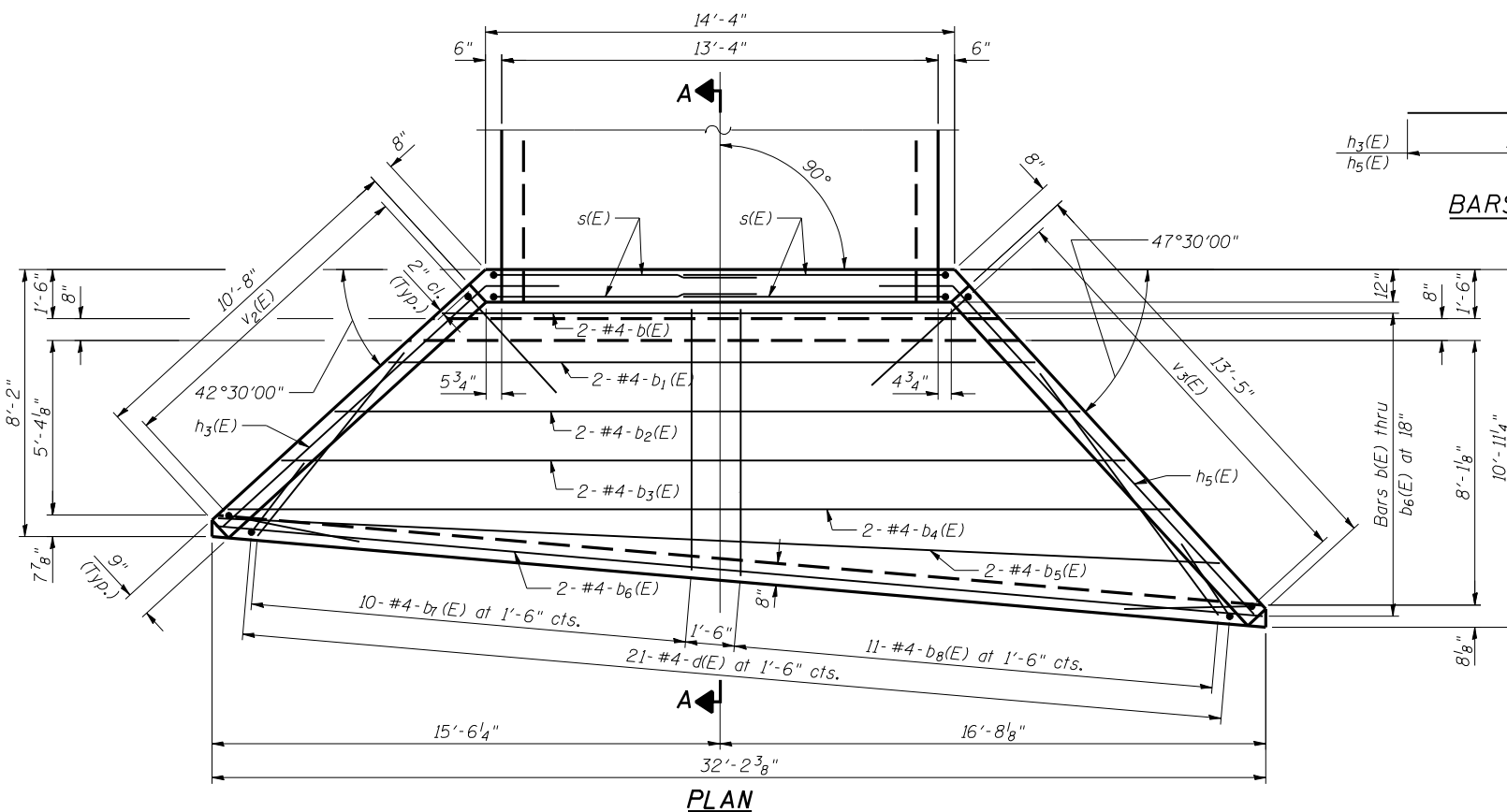
BILL OF MATERIAL

Bar	No.	Size	Length	Shape
b(E)	2	#4	16'-9"	—
b1(E)	2	#4	19'-9"	—
b2(E)	2	#4	22'-9"	—
b3(E)	2	#4	25'-9"	—
b4(E)	2	#4	28'-9"	—
b5(E)	2	#4	30'-7"	—
b6(E)	2	#4	32'-1"	—
b7(E)	2	#4	7'-8"	—
b8(E)	2	#4	8'-2"	—
d(E)	21	#4	5'-4"	└
h3(E)	1	#5	13'-1"	└
h4(E)	7	#4	10'-9"	—
h5(E)	1	#5	15'-10"	└
h6(E)	7	#4	13'-6"	—
v2(E)	9	#4	24'-4"	└
v3(E)	12	#4	24'-4"	└
s(E)	4	#6	27'-7"	└
CLASS SI CONCRETE			Cu. Yd.	16.3
REINFORCEMENT BARS EPOXY COATED			Pound	1075

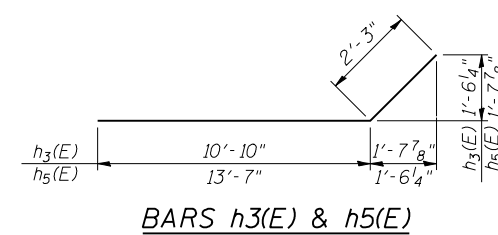
NOTES:  
Bill of Material for one (1) End Section only.  
Two (2) are required.

Concrete and reinforcement quantities are for information only, pay item is "Box Culvert End Section (Each)".

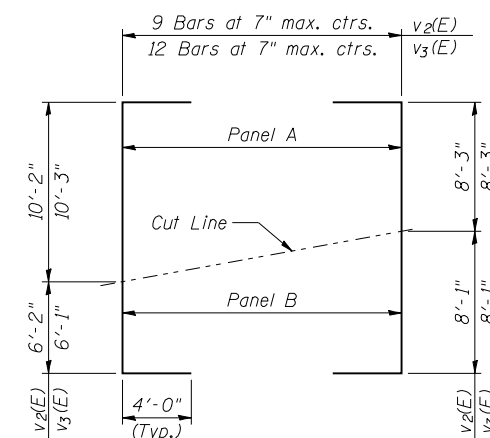
**BOX CULVERT END SECTION**  
**US ROUTE 67 OVER WILLOW CREEK**  
**F.A.P. ROUTE 310 - SECTION 115(RS-3, B-2)**  
**MORGAN COUNTY**  
**STATION 664+52.55**  
**STRUCTURE NO. 069-7500**



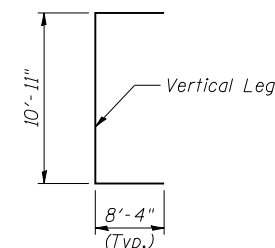
PLAN



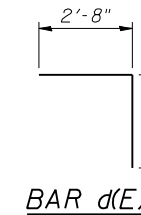
BARS h3(E) & h5(E)



CUTTING DIAGRAM  
BAR v2(E) & v3(E)



BAR s(E)



BAR d(E)

NOTES:

Class SI concrete shall be used throughout.

Exposed edges shall be beveled 3/4".

Reinforcement bars shall conform to the requirements of AASHTO M-31, M-42, M-53, Grade 60.

Reinforcement bars designated (E) shall be epoxy coated and shall conform to the requirements of AASHTO M-284.

Bar dimensions are out to out.

Precast substitution for the End Section will not be allowed.

DESIGNED	S.C. Crawley
CHECKED	K.L. Hayes
DRAWN	S.C. Crawley
CHECKED	K.L. Hayes