

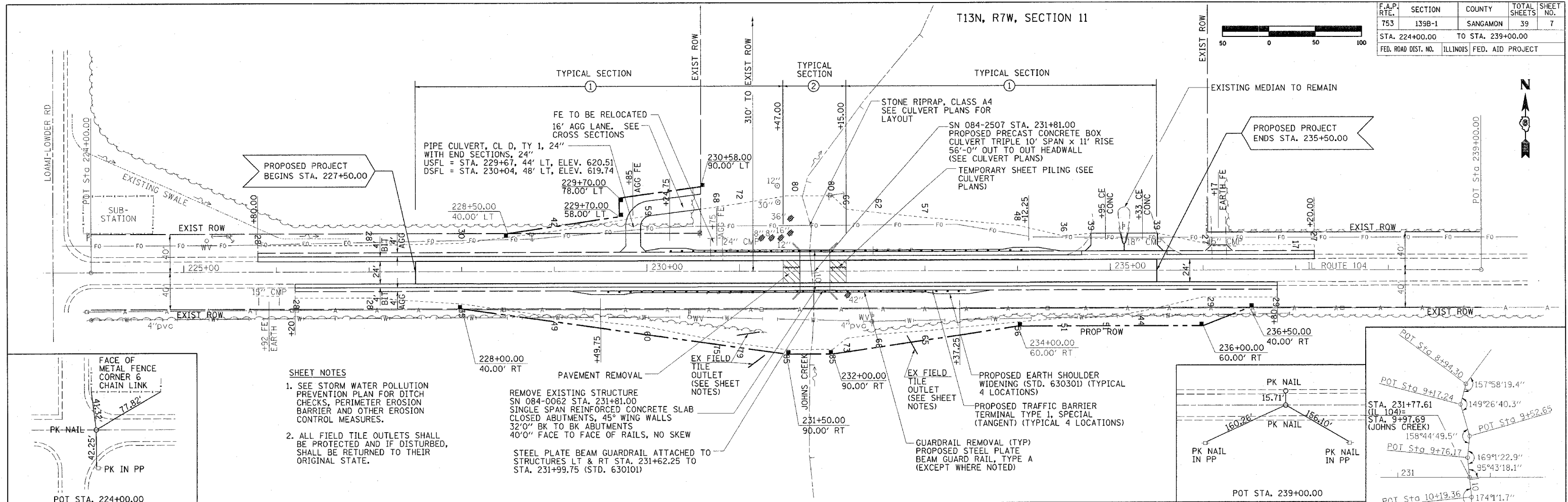
T13N, R7W, SECTION 11

F.A.P. RTE.	SECTION	COUNTY	TOTAL SHEETS	SHEET NO.
753	139B-1	SANGAMON	39	7
STA. 224+00.00		TO STA. 239+00.00		
FED. ROAD DIST. NO.		ILLINOIS FED. AID PROJECT		



PLAN	REVISIONS	DATE
NO.	BY	
NO.	BY	
NO.	BY	

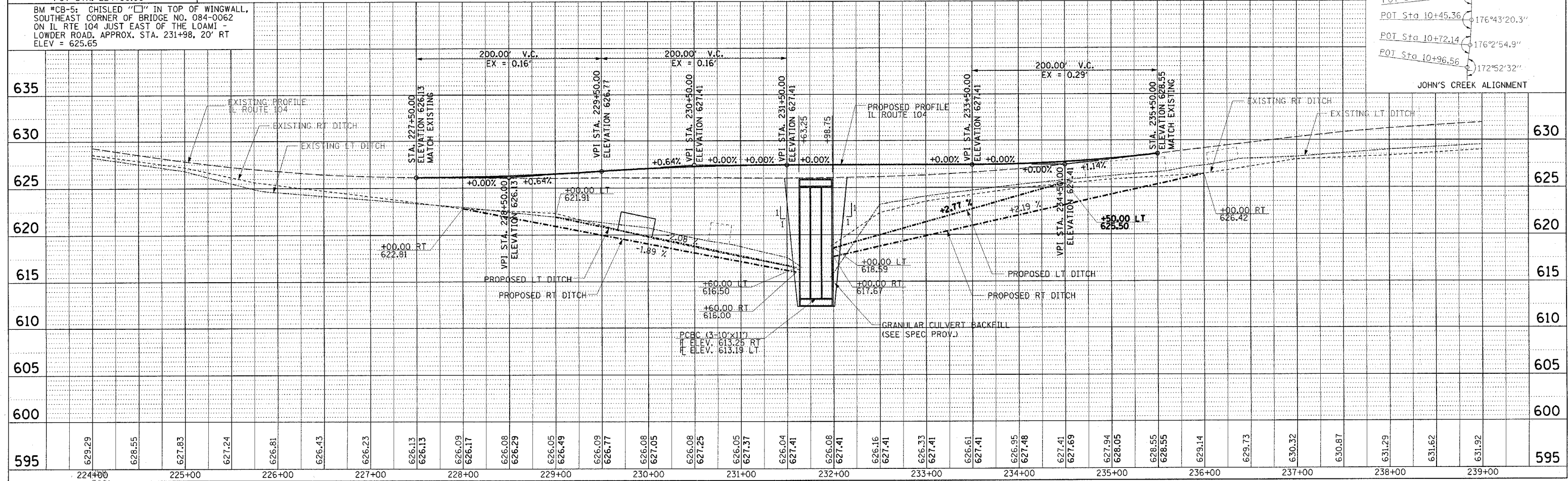
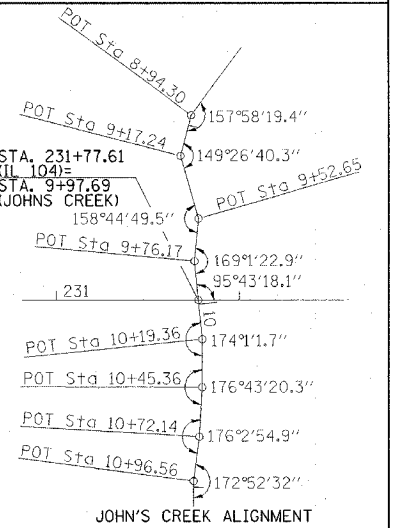
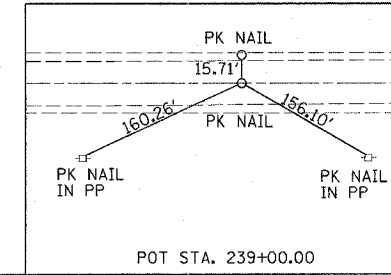
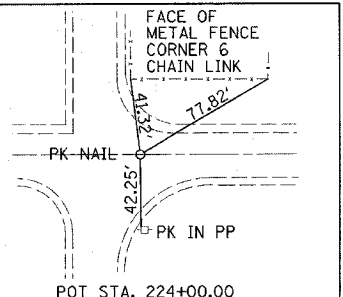
PROFILE	REVISIONS	DATE
NO.	BY	
NO.	BY	
NO.	BY	



- SHEET NOTES**
- SEE STORM WATER POLLUTION PREVENTION PLAN FOR DITCH CHECKS, PERIMETER EROSION BARRIER AND OTHER EROSION CONTROL MEASURES.
 - ALL FIELD TILE OUTLETS SHALL BE PROTECTED AND IF DISTURBED, SHALL BE RETURNED TO THEIR ORIGINAL STATE.

REMOVE EXISTING STRUCTURE SN 084-0062 STA. 231+81.00 SINGLE SPAN REINFORCED CONCRETE SLAB CLOSED ABUTMENTS, 45° WING WALLS 32'0" BK TO BK ABUTMENTS 40'0" FACE TO FACE OF RAILS, NO SKEW

STEEL PLATE BEAM GUARDRAIL ATTACHED TO STRUCTURES LT & RT STA. 231+62.25 TO STA. 231+99.75 (STD. 63010I)



BM *CB-5: CHISLED "□" IN TOP OF WINGWALL, SOUTHEAST CORNER OF BRIDGE NO. 084-0062 ON IL RTE 104 JUST EAST OF THE LOAMI - LOWDER ROAD, APPROX. STA. 231+98, 20' RT ELEV = 625.65

PCBC (3-10'x11')
ELEV. 613.25 RT
ELEV. 613.19 LT

GRANULAR CULVERT BACKFILL
(SEE SPEC PROV.)