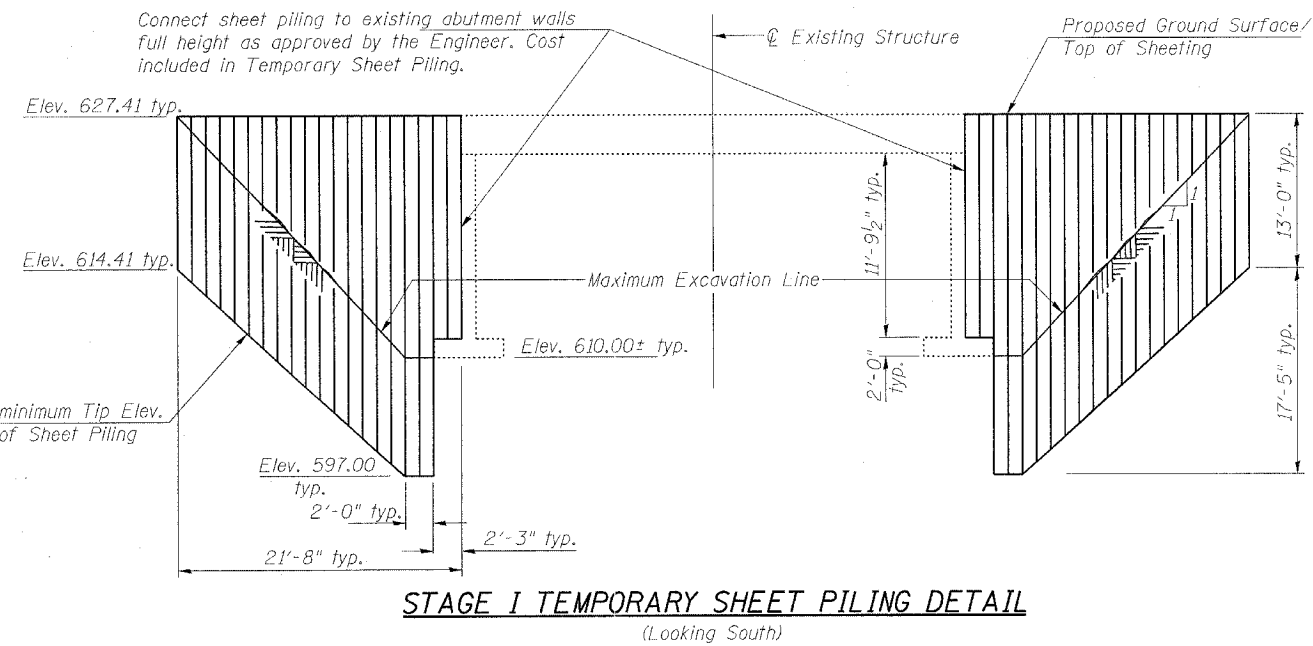


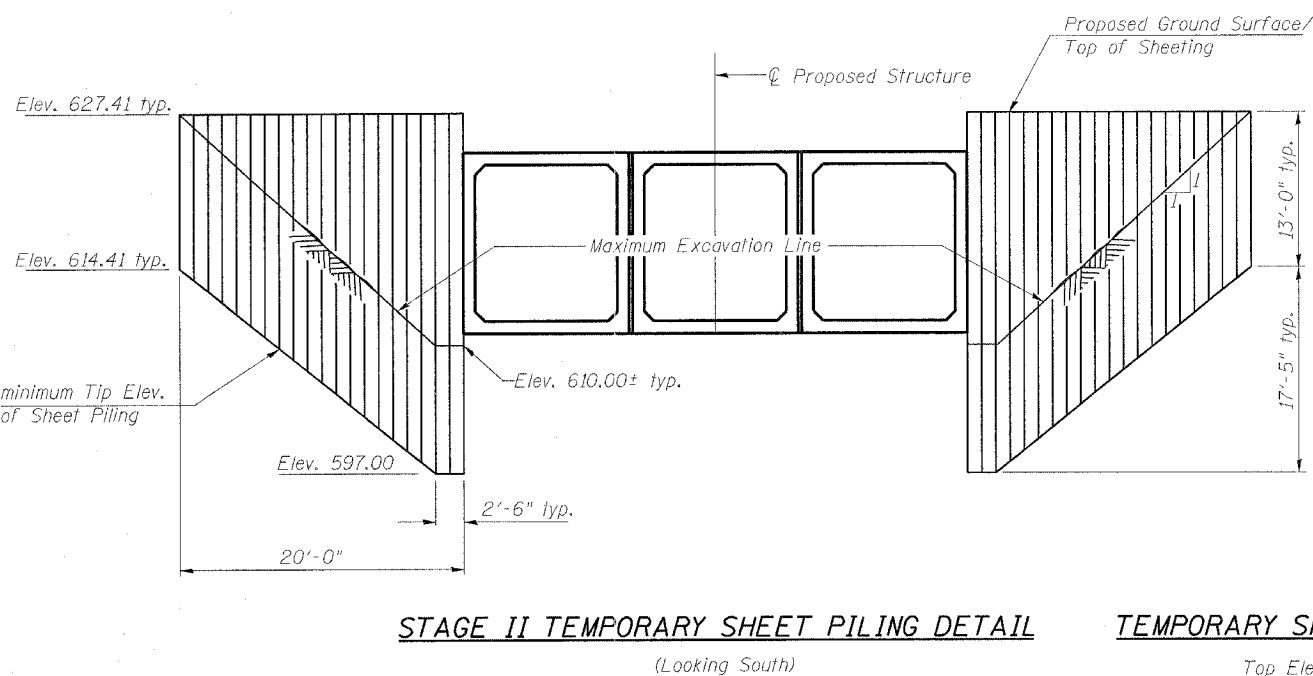
ROUTE NO.	SECTION	COUNTY	TOTAL SHEETS	SHEET NO.	SHEET NO. 3 7 SHEETS
FAP 753 (IL 184)	139B-1	SANGAMON	39	17	
FED. ROAD DIST. NO. 7	ILLINOIS	FED. AID PROJECT			

BILL OF MATERIAL

Bar	No.	Size	Length (ft)	Shape
d ₁₀	10	#4	11'-2"	┌
n ₁₀	8	#4	19'-0"	—
n ₂₀	96	#4	15'-11"	—
n ₂₀ (E)	80	#7	7'-6"	┌
n ₂₁ (E)	84	#6	3'-10"	┌
s ₁₀	4	#4	26'-0"	┌
s ₁₁	4	#4	26'-5"	┌
t ₂₀	168	#6	9'-7"	—
v ₁₀	4	#4	7'-0"	—
v ₂₀	20	#4	17'-0"	—
v ₂₁	84	#5	8'-3"	—
v ₂₂	28	#4	4'-7"	—
v ₂₃	28	#4	6'-6"	—
v ₂₄	28	#4	8'-6"	—
w ₂₀	64	#5	15'-11"	—
Precast Concrete Box Culvert 10' x 11'		Foot		168
Concrete Box Culverts		Cu. Yd.		105.4
Reinforcement Bars		Pound		5990
Reinforcement Bars Epoxy Coated		Pound		1710
Name Plates		Each		1
Temporary Sheet Piling		Sq. Ft.		1114



STAGE I TEMPORARY SHEET PILING DETAIL
(Looking South)



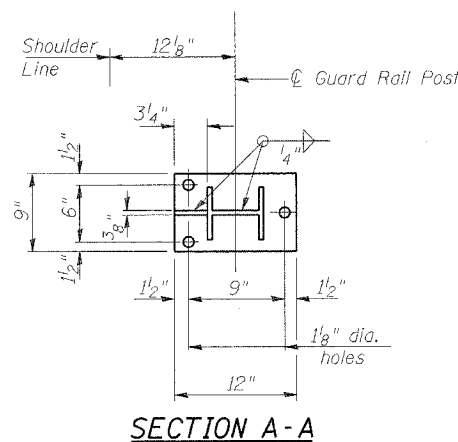
STAGE II TEMPORARY SHEET PILING DETAIL
(Looking South)

TEMPORARY SHEET PILING DATA

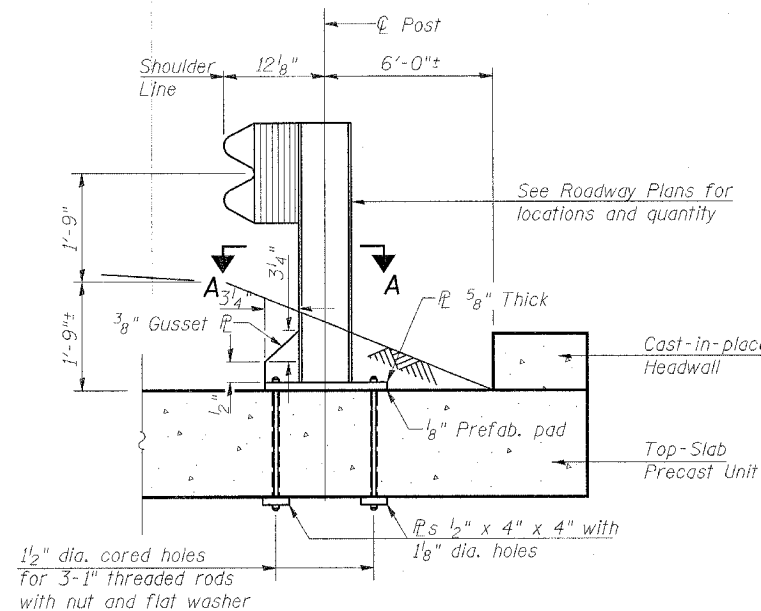
Top Elev. : 627.41
Bottom Elev. : Varies
Embedment : 13'-0"
Min. Section Modulus : 28.4 in/ft
F : 36,600 psi

NOTE

If the Contractor chooses to alter the temporary cantilevered sheet piling design requirements shown on the plans, a design submittal including plan details and calculations will be required for review and acceptance by the Engineer.



SECTION A-A



GUARDRAIL POST DETAIL

Locate posts to clear culvert walls

Work this sheet with sheet 4 of 7.

ILLINOIS DEPARTMENT OF TRANSPORTATION

SHEET TITLE TEMPORARY SHEET PILING, BAR DETAILS & BILL OF MATERIAL		PROJECT NO. 02124-2
PROJECT IL. ROUTE 104 OVER JOHNS CREEK FAP ROUTE 753 SECTION 139B-1 SANGAMON COUNTY STATION 231+81 STRUCTURE NUMBER 084-2507	SCALE DATE 01/06/05	DRAWN BY TFC
CHECKED BY CME/REG/M.C.B.		QUANTITY NO.
COOMBE-BLOXDORF P.C. Engineers/Land Surveyors Springfield, Illinois Design Firm License No. 184-002703		3 OF 7 SHTS