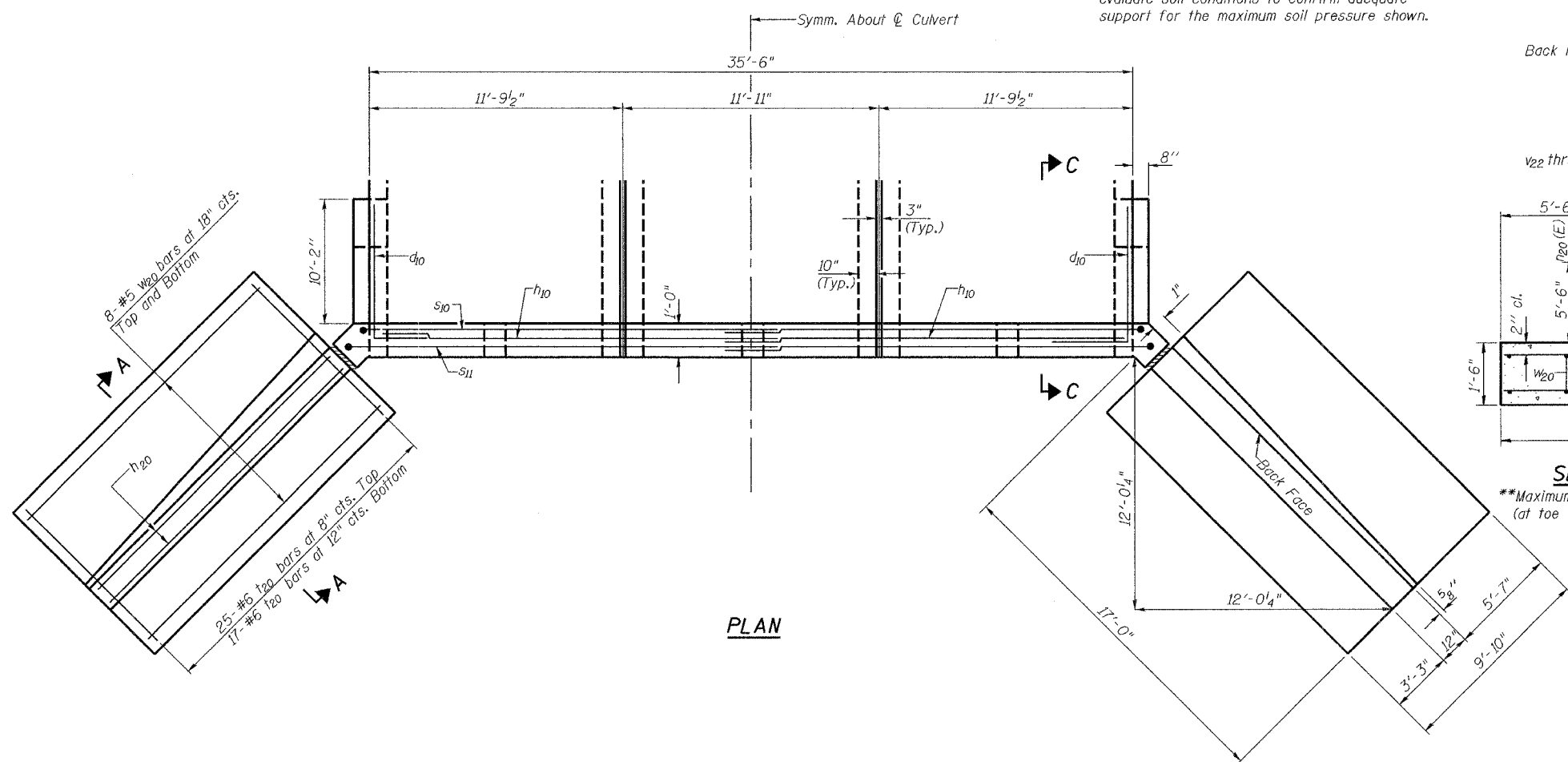


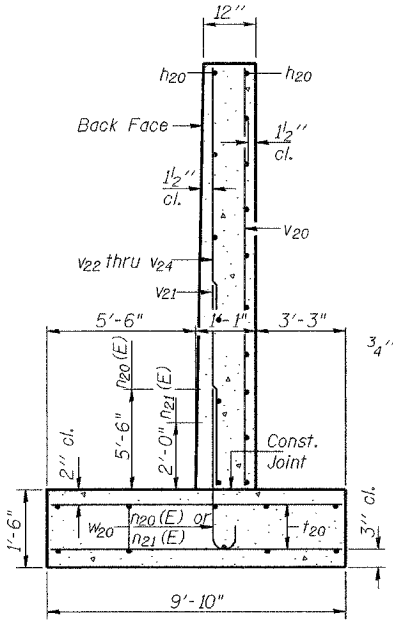
| | | | | | |
|-----------------------|----------|-------------------|--------------|-----------|-------------------------|
| ROUTE NO. | SECTION | COUNTY | TOTAL SHEETS | SHEET NO. | SHEET NO. 4 7 SHEETS |
| FAP 753 (L 184) | 139BR-1 | SANGAMON | 36 | 18 | |
| FED. ROAD DIST. NO. 7 | ILLINOIS | FED. AID PROJECT- | | | |

Contract No. 72689

**Following excavation for the proposed wingwall foundation, the District geotechnical staff must evaluate soil conditions to confirm adequate support for the maximum soil pressure shown.

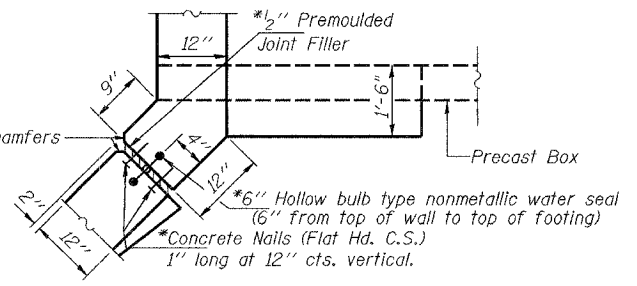


PLAN



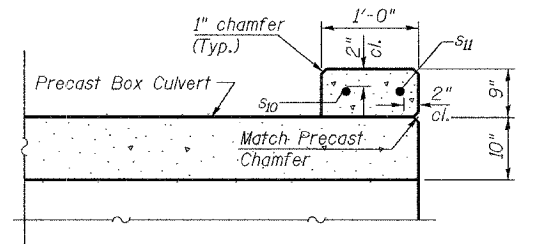
SECTION A-A

**Maximum Soil Pressure = 1.8 tsf (at toe of wingwall)

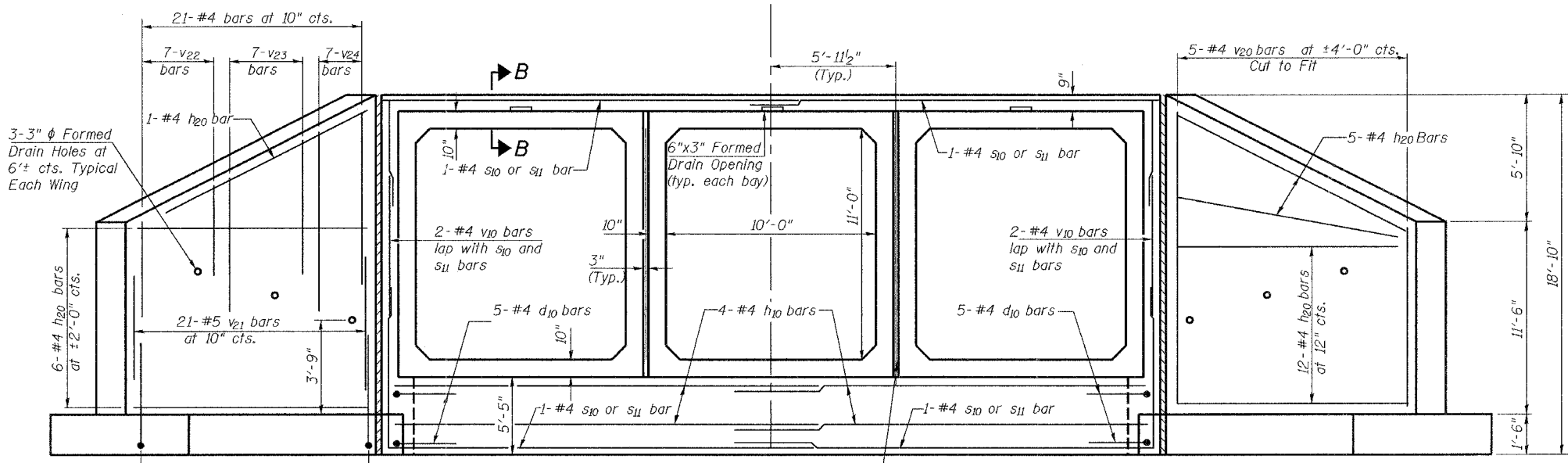


CORNER DETAIL

*Cost Included in Concrete Box Culverts



SECTION B-B

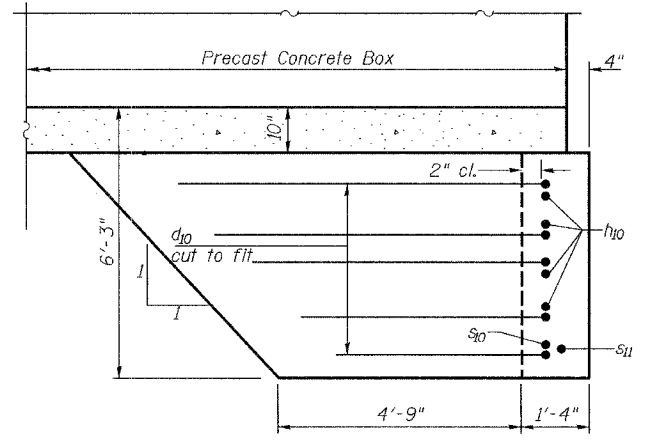


REINFORCEMENT BACK FACE

END ELEVATION

REINFORCEMENT FRONT FACE

After backfilling precast units to mid height the 3" gap shall be filled with Class SI Concrete with a 3/8" maximum size aggregate. (Typ.)



SECTION C-C

Min. Bar Laps

- #4 = 1'-4"
- #5 = 1'-8"

Work this sheet with sheet 3 of 7.

| | |
|--|---|
| ILLINOIS DEPARTMENT OF TRANSPORTATION | |
| SHEET TITLE TRIPLE 10'-0" X 11'-0" BOX CULVERT ELEVATION & SECTIONS | |
| PROJECT IL. ROUTE 104 OVER JOHNS CREEK FAP ROUTE 753 SECTION 139BR-1 SANGAMON COUNTY STATION 231+81 STRUCTURE NUMBER 084-2507 | PROJECT NO. 02124-2 DATE 02/01/07 DRAWN BY TFC CHECKED BY CME/REG/MCB DRAWING NO. |
| COOMBE-BLOXDORF P.C. Engineers / Land Surveyors Springfield, Illinois Design Firm License No. 184-002703 | 4 OF 7 SHTS |