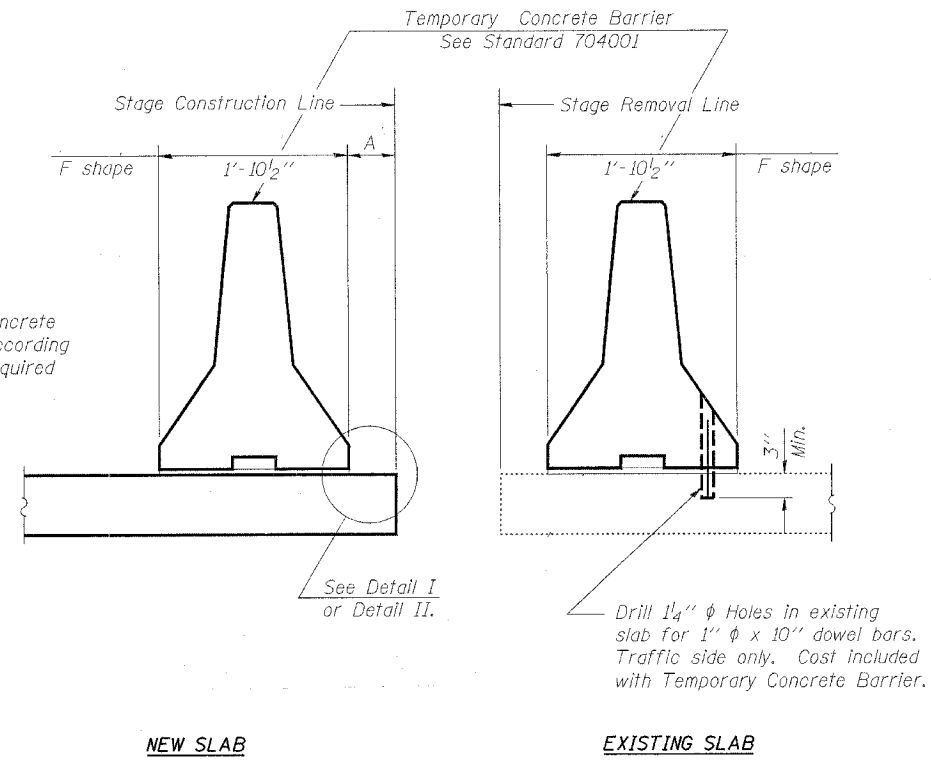


ROUTE NO.	SECTION	COUNTY	TOTAL SHEETS	SHEET NO.	SHEET NO. 5 7 SHEETS
FAP 753 (IL 104)	139B-1	SANGAMON	39	19	
FED. ROAD DIST. NO. 7	ILLINOIS	FED. AID PROJECT-			



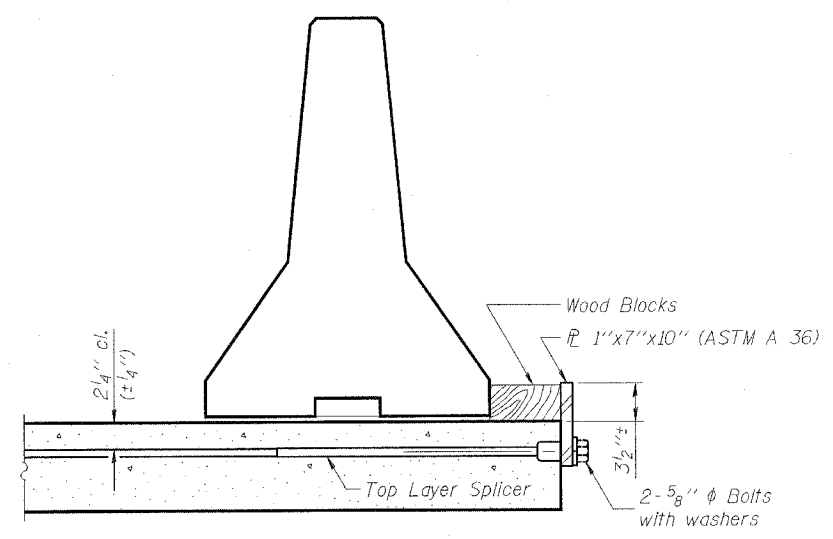
SECTIONS THRU SLAB

NOTES

Detail I - With Bar Splicer or Couplers:
Connect one (1) 1"x7"x10" steel \bar{L} to the top layer of couplers with 2-5/8" ϕ bolts screwed to coupler at approximate \bar{C} of each barrier panel.

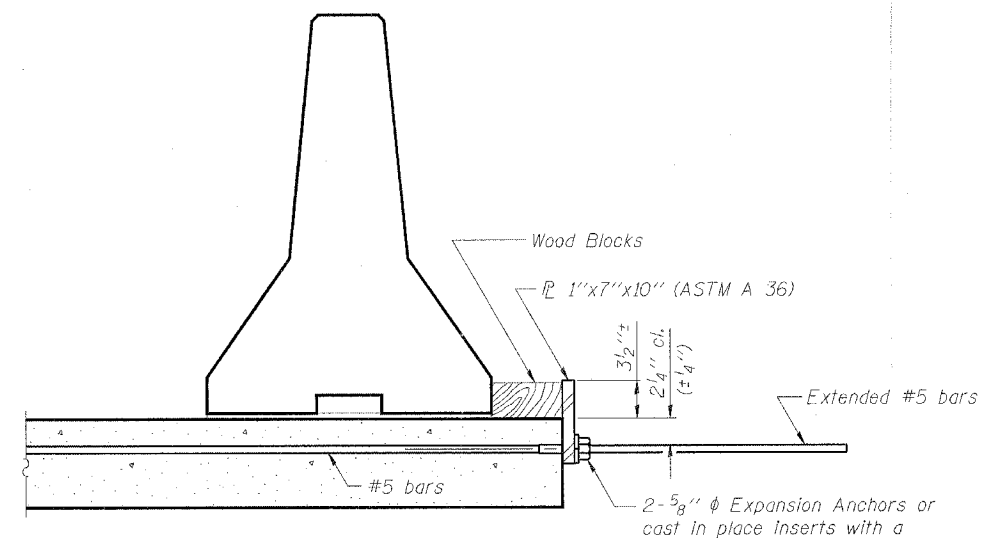
Detail II - With Extended Reinforcement Bars:
Connect one (1) 1"x7"x10" steel \bar{L} to the concrete slab with 2-5/8" ϕ Expansion Anchors or cast in place inserts spaced between the top layer of reinforcement at approximate \bar{C} of each barrier panel.

Cost of anchorage is included with Temporary Concrete Barrier.



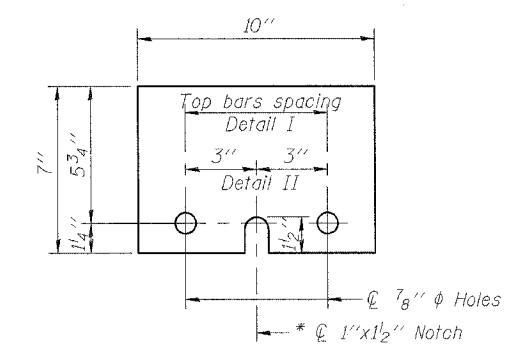
DETAIL I

The 1"x7"x10" Plate shall not be removed until Stage II Construction forms and reinforcement bars are in place.



DETAIL II

The 1"x7"x10" Plate shall not be removed until Stage II Construction forms and all reinforcement bars are in place and the concrete is ready to be placed.



1'x7'x10'
* Required only with Detail II

ILLINOIS DEPARTMENT OF TRANSPORTATION			
SHEET TITLE TEMPORARY CONCRETE BARRIER FOR STAGE CONSTRUCTION			
PROJECT IL. ROUTE 104 OVER JOHNS CREEK FAP ROUTE 753 SECTION 139B-1 SANGAMON COUNTY STATION 231+81 STRUCTURE NUMBER 084-2507	PROJECT NO. 02124-2	SCALE 01/06/05	DRAWN BY TFG
CHECKED BY CME/REG/MCB		DRAWING NO. 5	
COOMBE-BLOXDORF P.C. Engineers/Land Surveyors Springfield, Illinois Design Firm License No. 184-002703			OF 7 SHTS