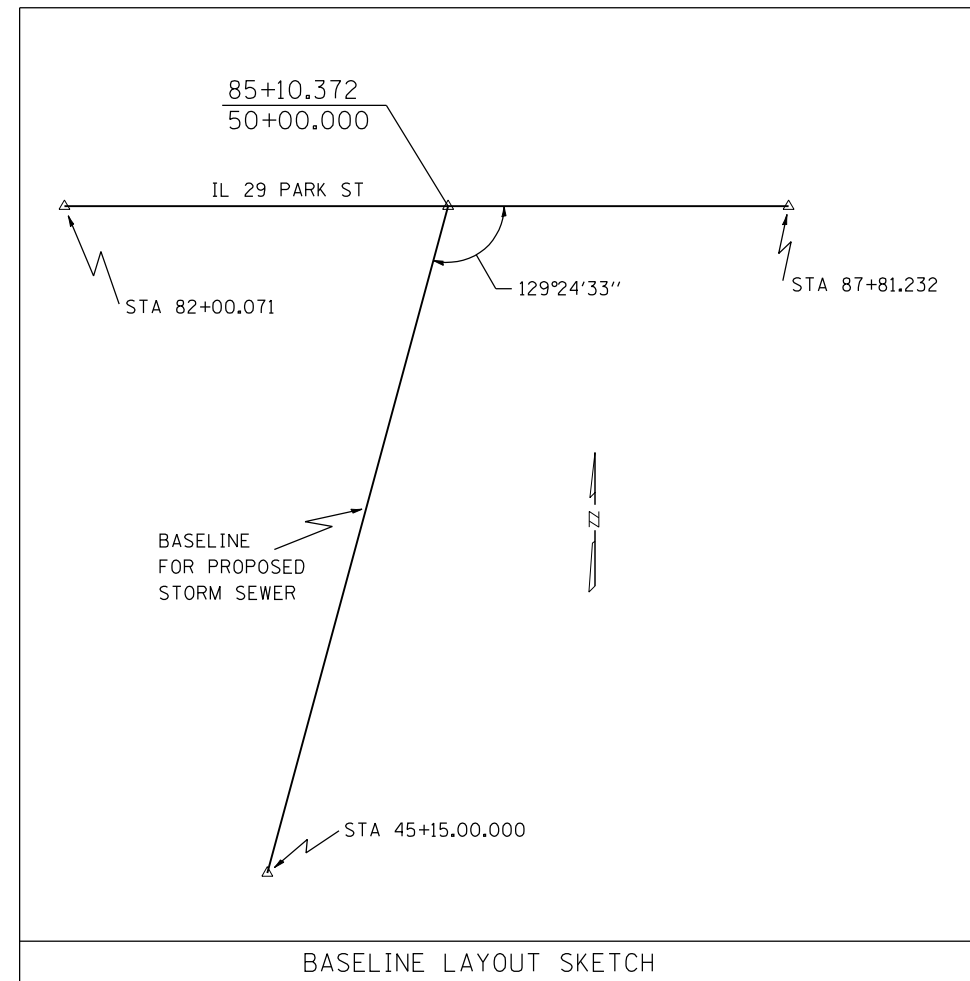
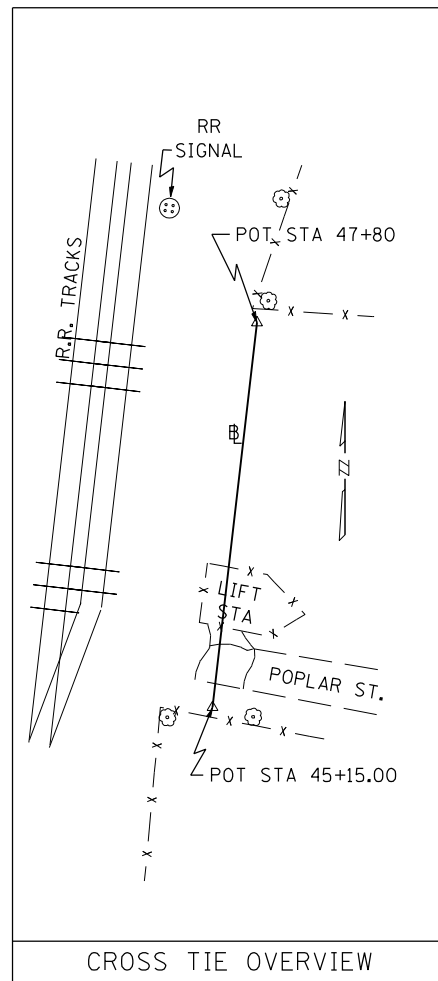
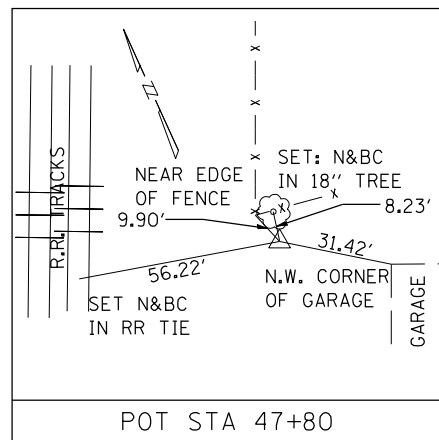
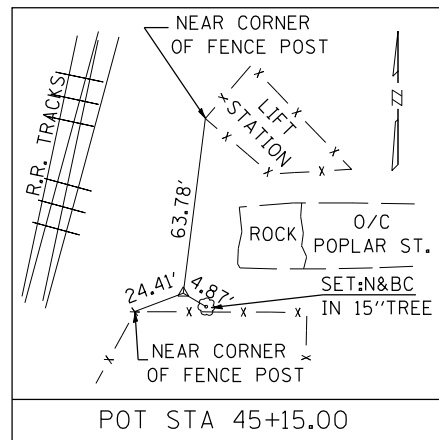
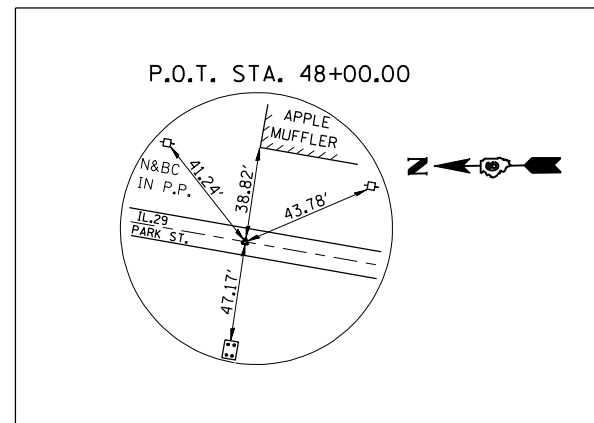


F.A.P. RTE.	SECTION	COUNTY	TOTAL SHEETS	SHEET NO.
75	•	CHRISTIAN	97	39
STA.		TO STA.		
FED. ROAD DIST. NO.		ILLINOIS FED. AID PROJECT		
• D 6 RESURFACING 2007				



BM#3 - FOUND R.R. SPIKE IN P.P. IN EAST R.O.W. OF NORTH FOLK & SOUTHERN R.R. ± 100' NORTH OF POPLAR ST. ELEV. 617.56

BM TJM#1 - SET CHSLD " " IN SOUTH ABUT. S.E. WING WALL OF PARK ST. AND NORTHFOLK AND SOUTHERN R.R. VIADUCT ELEV. 616.79



PLOT DATE = 12/15/2006
PLOT SCALE = 42.3528 / IN
PLOT SCALE = 42.3528 / IN

REVISIONS	
NAME	DATE

ILLINOIS DEPARTMENT OF TRANSPORTATION
**BASELINE, CROSS TIES,
AND BENCH MARKS**
F.A.P. 75 (IL 29)
SECTION D 6 RESURFACING 2007
CHRISTIAN COUNTY

SCALE: VERT. DRAWN BY
 HORIZ. CHECKED BY
DATE