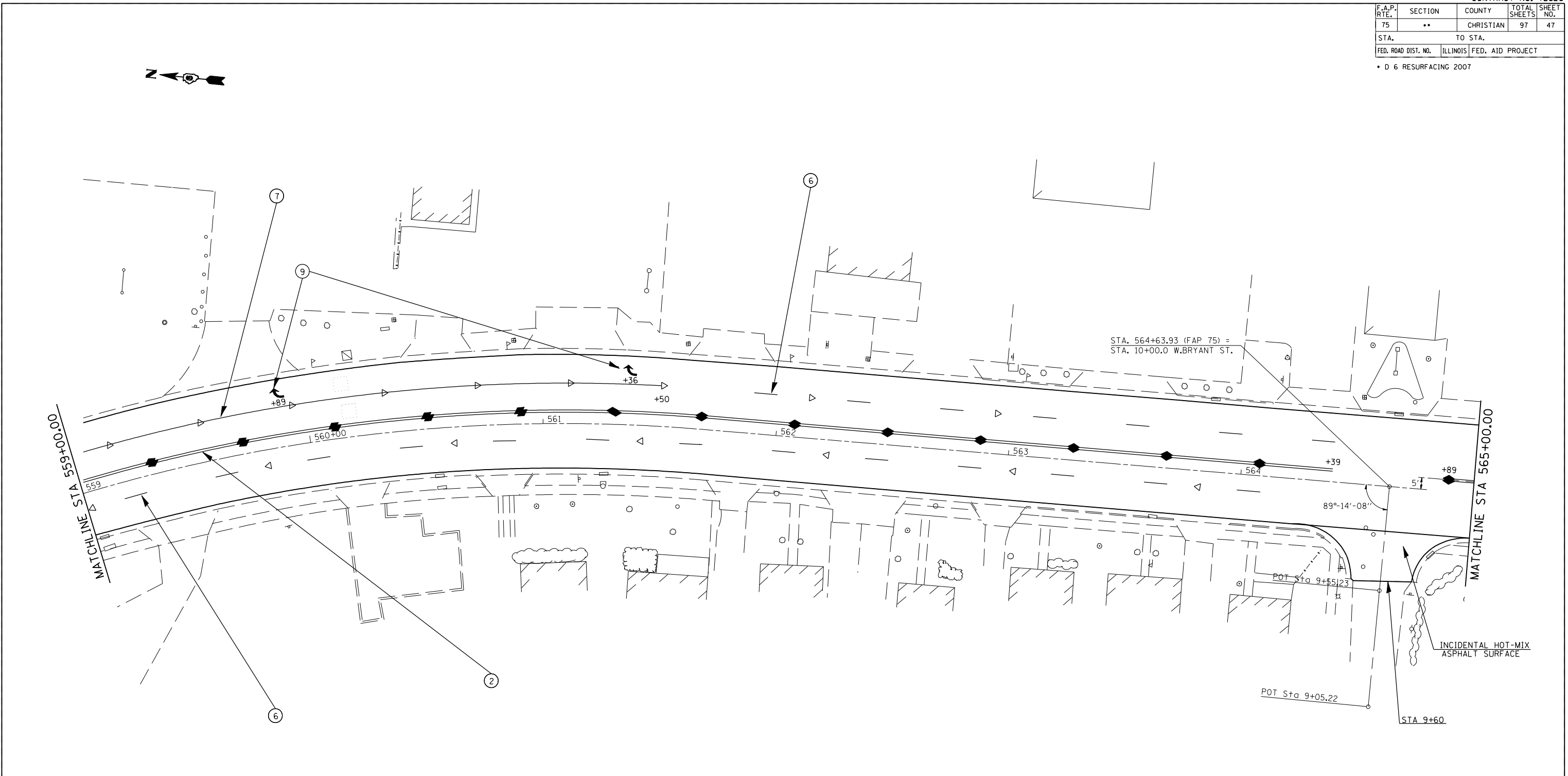


F.A.P. RTE.	SECTION	COUNTY	TOTAL SHEETS	SHEET NO.
75	**	CHRISTIAN	97	47
STA.		TO STA.		
FED. ROAD DIST. NO.	ILLINOIS	FED. AID PROJECT		

• D 6 RESURFACING 2007



- LEGEND
- 1.THERMOPLASTIC PAVEMENT MARKING - LINE 5" (WHITE)
  - 2.THERMOPLASTIC PAVEMENT MARKING - LINE 5" (YELLOW)
  - 2a.THERMOPLASTIC PAVEMENT MARKING - LINE 5" (DOUBLE YELLOW)
  - 2b. THERMOPLASTIC PAVEMENT MARKING LINE 6" (WHITE)
  - 3.THERMOPLASTIC PAVEMENT MARKING - LINE 8" (WHITE)
  - 4.THERMOPLASTIC PAVEMENT MARKING - LINE 12" (WHITE)
  - 5.THERMOPLASTIC PAVEMENT MARKING - LINE 12" (YELLOW)
  - 6.PREFORMED PLASTIC PAVEMENT MARKING, TYPE B - LINE 5" (WHITE)
  - 7.PREFORMED PLASTIC PAVEMENT MARKING, TYPE B - LINE 6" (WHITE)
  - 8.PREFORMED PLASTIC PAVEMENT MARKING, TYPE B - LINE 24" (WHITE)
  - 9.PREFORMED PLASTIC PAVEMENT MARKING, TYPE B - LETTERS AND SYMBOLS (WHITE)
  - ◆ TWO-WAY AMBER RPM
  - ▶ ONE-WAY AMBER RPM
  - ▷ ONE-WAY CRYSTAL RPM

REVISIONS	
NAME	DATE

ILLINOIS DEPARTMENT OF TRANSPORTATION  
PAVEMENT MARKING PLAN  
FAP 75 (IL 29)  
SECTION D 6 RESURFACING 2007  
CHRISTIAN COUNTY

SCALE: VERT.  
HORIZ.  
DATE

DRAWN BY  
CHECKED BY

PLOT DATE = 12/15/2006  
FILE NAME = c:\p\projects\654683\20\mpl\plan.dgn  
PLOT SCALE = 4.23525' / IN.  
USER NAME = laughlin-1