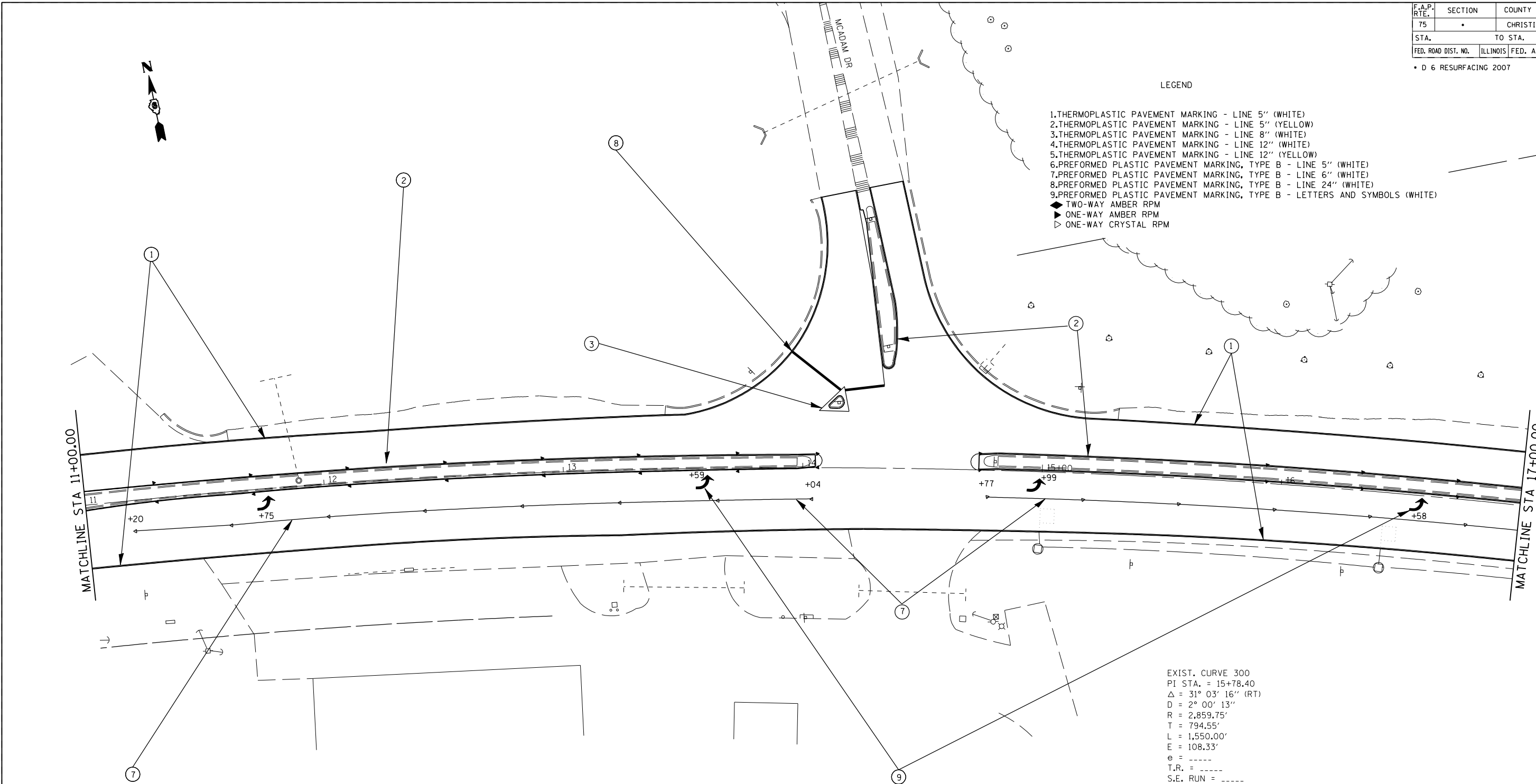


F.A.P. RTE.	SECTION	COUNTY	TOTAL SHEETS	SHEET NO.
75		CHRISTIAN	97	60
STA.		TO STA.		
FED. ROAD DIST. NO.	ILLINOIS	FED. AID PROJECT		

• D 6 RESURFACING 2007

LEGEND

- 1.THERMOPLASTIC PAVEMENT MARKING - LINE 5" (WHITE)
- 2.THERMOPLASTIC PAVEMENT MARKING - LINE 5" (YELLOW)
- 3.THERMOPLASTIC PAVEMENT MARKING - LINE 8" (WHITE)
- 4.THERMOPLASTIC PAVEMENT MARKING - LINE 12" (WHITE)
- 5.THERMOPLASTIC PAVEMENT MARKING - LINE 12" (YELLOW)
- 6.PREFORMED PLASTIC PAVEMENT MARKING, TYPE B - LINE 5" (WHITE)
- 7.PREFORMED PLASTIC PAVEMENT MARKING, TYPE B - LINE 6" (WHITE)
- 8.PREFORMED PLASTIC PAVEMENT MARKING, TYPE B - LINE 24" (WHITE)
- 9.PREFORMED PLASTIC PAVEMENT MARKING, TYPE B - LETTERS AND SYMBOLS (WHITE)
- ◆ TWO-WAY AMBER RPM
- ▶ ONE-WAY AMBER RPM
- ▷ ONE-WAY CRYSTAL RPM



EXIST. CURVE 300
 PI STA. = 15+78.40
 $\Delta = 31^\circ 03' 16''$ (RT)
 $D = 2^\circ 00' 13''$
 $R = 2,859.75'$
 $T = 794.55'$
 $L = 1,550.00'$
 $E = 108.33'$
 $e = \text{-----}$
 $T.R. = \text{-----}$
 $S.E. \text{ RUN} = \text{-----}$
 $P.C. \text{ STA.} = 7+83.85$
 $P.T. \text{ STA.} = 23+33.85$

PLOT DATE = 12/15/2006
 FILE NAME = c:\p\projects\654683\20\empl\plan1.dgn
 PLOT SCALE = 4.23525' / IN.
 USER NAME = laughlin-1

REVISIONS	
NAME	DATE

ILLINOIS DEPARTMENT OF TRANSPORTATION
 PAVEMENT MARKING PLAN
 FAP 75 (IL 29)
 SECTION D 6 RESURFACING 2007
 CHRISTIAN COUNTY
 SCALE: VERT. _____
 HORIZ. _____
 DATE _____ DRAWN BY _____
 CHECKED BY _____