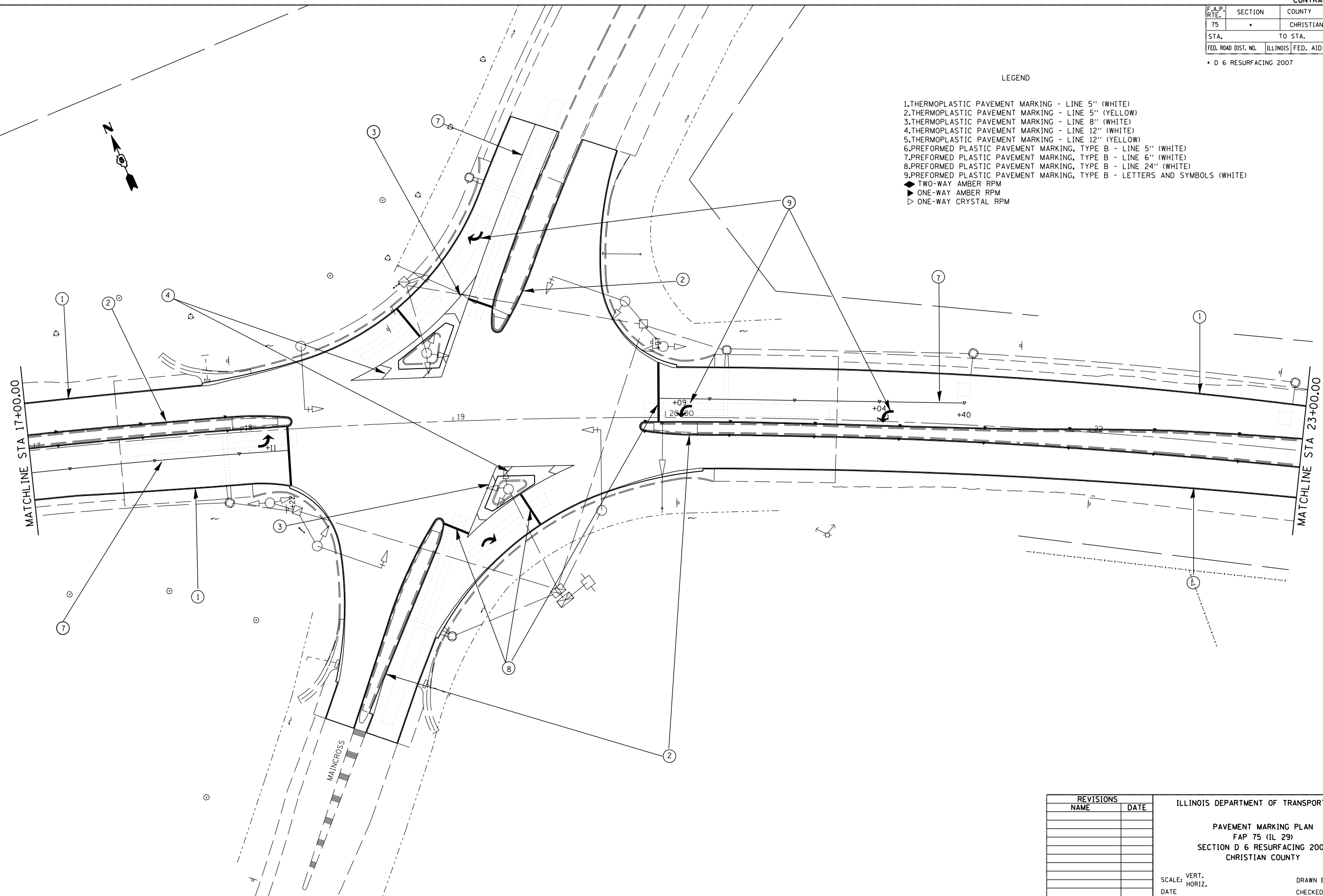


F.A.P. RTE.	SECTION	COUNTY	TOTAL SHEETS	SHEET NO.
75		CHRISTIAN	97	61
STA.		TO STA.		
FED. ROAD DIST. NO.		ILLINOIS FED. AID PROJECT		

• D 6 RESURFACING 2007

LEGEND

- 1.THERMOPLASTIC PAVEMENT MARKING - LINE 5" (WHITE)
- 2.THERMOPLASTIC PAVEMENT MARKING - LINE 5" (YELLOW)
- 3.THERMOPLASTIC PAVEMENT MARKING - LINE 8" (WHITE)
- 4.THERMOPLASTIC PAVEMENT MARKING - LINE 12" (WHITE)
- 5.THERMOPLASTIC PAVEMENT MARKING - LINE 12" (YELLOW)
- 6.PREFORMED PLASTIC PAVEMENT MARKING, TYPE B - LINE 5" (WHITE)
- 7.PREFORMED PLASTIC PAVEMENT MARKING, TYPE B - LINE 6" (WHITE)
- 8.PREFORMED PLASTIC PAVEMENT MARKING, TYPE B - LINE 24" (WHITE)
- 9.PREFORMED PLASTIC PAVEMENT MARKING, TYPE B - LETTERS AND SYMBOLS (WHITE)
- ◆ TWO-WAY AMBER RPM
- ▶ ONE-WAY AMBER RPM
- ▷ ONE-WAY CRYSTAL RPM



REVISIONS		ILLINOIS DEPARTMENT OF TRANSPORTATION
NAME	DATE	
		PAVEMENT MARKING PLAN FAP 75 (IL 29) SECTION D 6 RESURFACING 2007 CHRISTIAN COUNTY SCALE: VERT. DRAWN BY HORIZ. CHECKED BY DATE

PLOT DATE = 12/15/2006
 FILE NAME = c:\p\projects\654683\20\empl\plan1.dgn
 PLOT SCALE = 4.23525 / IN.
 USER NAME = laughlin-1