

F.A.P. RTE.	SECTION	COUNTY	TOTAL SHEETS	SHEET NO.
75		CHRISTIAN	97	80
STA.		TO STA.		
FED. ROAD DIST. NO.		ILLINOIS FED. AID PROJECT		
• D 6 RESURFACING 2007				

Ⓐ PROP MANHOLES, TYPE A, 5'-DIAMETER,
TYPE 1 FRAME, CLOSED LID
STA 47+04.20, 23.29' LT
TOP OF LID ELEV ± 618.00
℄ ELEV ± 598.00

Ⓑ PROP MANHOLES, TYPE A, 5'-DIAMETER,
TYPE 1 FRAME, OPEN LID
STA 45+08.15, 64.66' RT
TOP OF LID ELEV ± 613.10
℄ ELEV ± 597.75

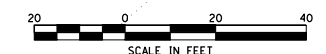
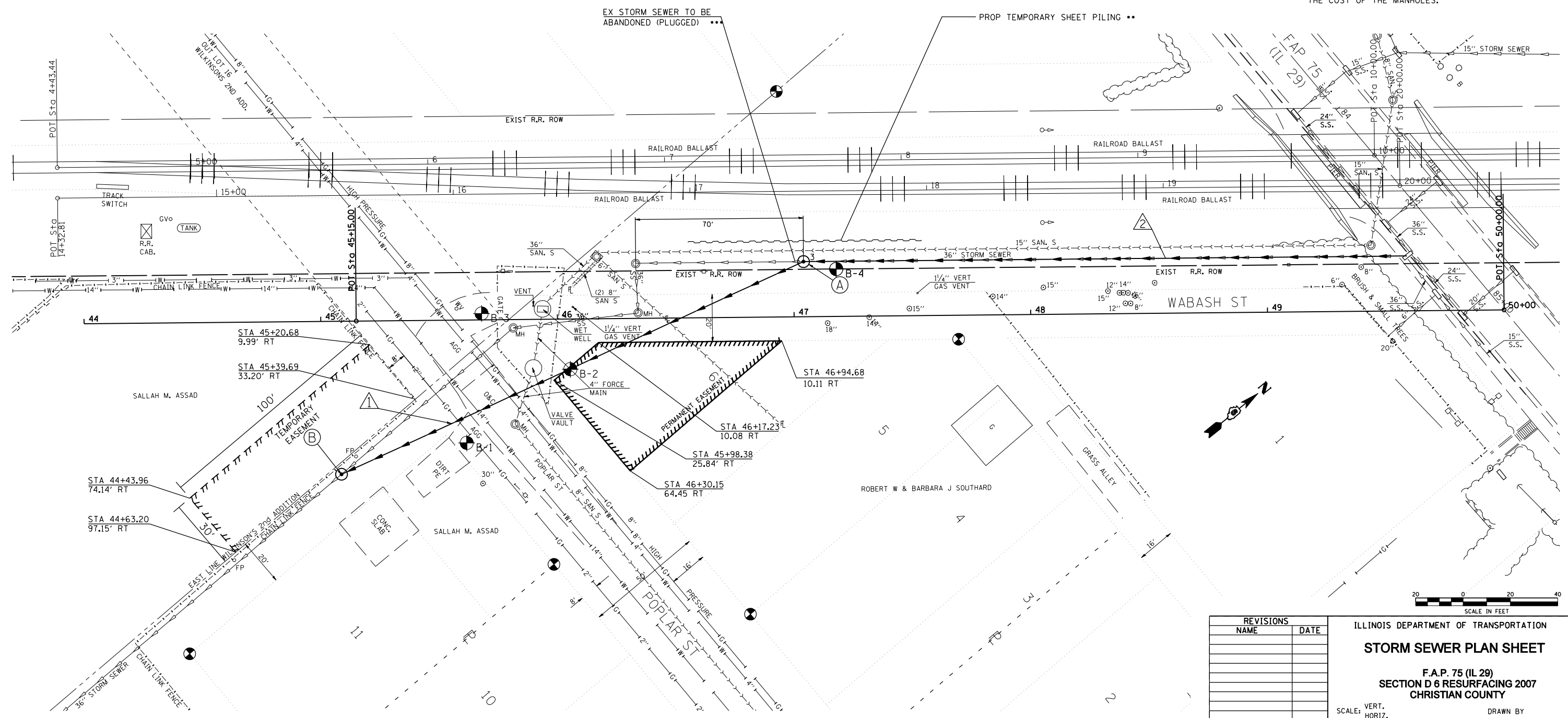
Ⓐ PROP STORM SEWERS JACKED
IN PLACE, CLASS A 36"

Ⓐ PROP INSERTION CULVERT LINER (SPECIAL)

NOTE:
ALL PROPOSED ELEVATIONS WILL BE
ADJUSTED IN THE FIELD BY THE ENGINEER

LEGEND:
● B- SOIL BORINGS

- - CONTRACTOR TO SUBMIT DESIGN OF TEMPORARY SHEET PILING FOR APPROVAL.
- - THE ABANDONED STORM SEWER SHALL BE PLUGGED IN ACCORDANCE WITH ARTICLE 550.05 OF THE STANDARD SPECIFICATIONS. THIS WORK WILL NOT BE PAID FOR SEPARATELY, BUT SHALL BE CONSIDERED INCLUDED IN THE COST OF THE MANHOLES.



REVISIONS	
NAME	DATE

ILLINOIS DEPARTMENT OF TRANSPORTATION
STORM SEWER PLAN SHEET
 F.A.P. 75 (IL 29)
 SECTION D 6 RESURFACING 2007
 CHRISTIAN COUNTY
 SCALE: VERT. DRAWN BY
 HORIZ. CHECKED BY
 DATE

PLOT DATE = 12/15/2006
 FILE NAME = c:\p\projects\654683\ed53280\wh\plan.dgn
 PLOT SCALE = 4.23525" / IN.
 USER NAME = laughlin-1