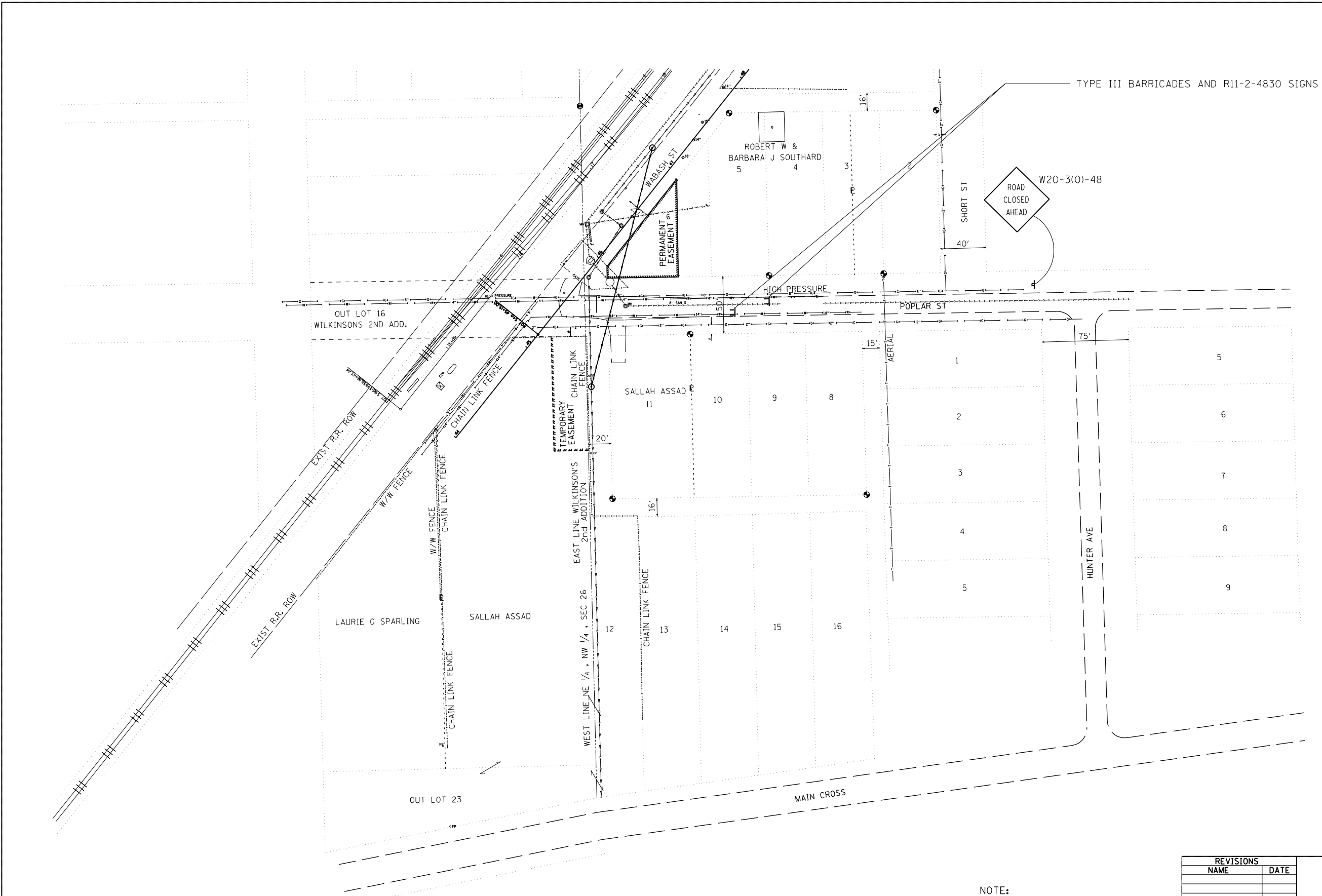


F.A.P. RTE.	SECTION	COUNTY	TOTAL SHEETS	SHEET NO.
75	.	CHRISTIAN	97	81

STA.	TO STA.
FED. ROAD DIST. NO.	ILLINOIS FED. AID PROJECT

• D 6 RESURFACING 2007



NOTE:
SEE STANDARD BLR 22 FOR
ADDITIONAL INFORMATION.

REVISIONS	
NAME	DATE

ILLINOIS DEPARTMENT OF TRANSPORTATION

TRAFFIC CONTROL PLAN
FAP 75 (IL 29)
SECTION D 6 RESURFACING 2007
CHRISTIAN COUNTY

SCALE: VERT. / HORIZ.
DATE: / / DRAWN BY: / CHECKED BY: /

PLOT DATE = 12/15/2006
FILE NAME = c:\p\projects\654683\ed53280\white\et1.dgn
PLOT SCALE = 1/8"=1'-0" / IN.
USER NAME = laughlin-1