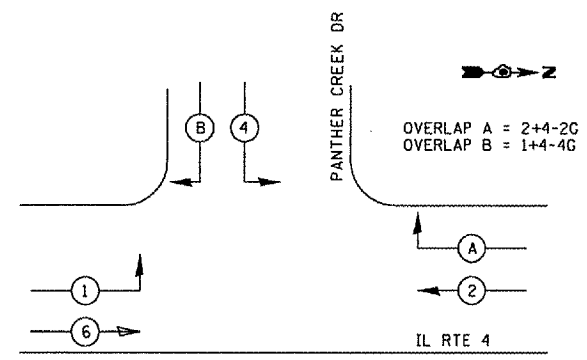
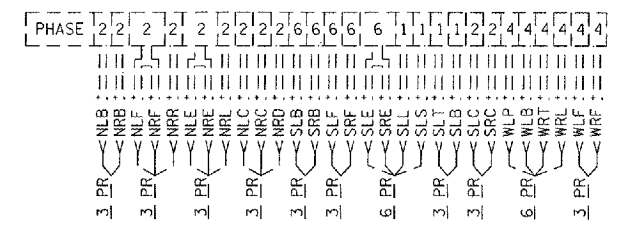


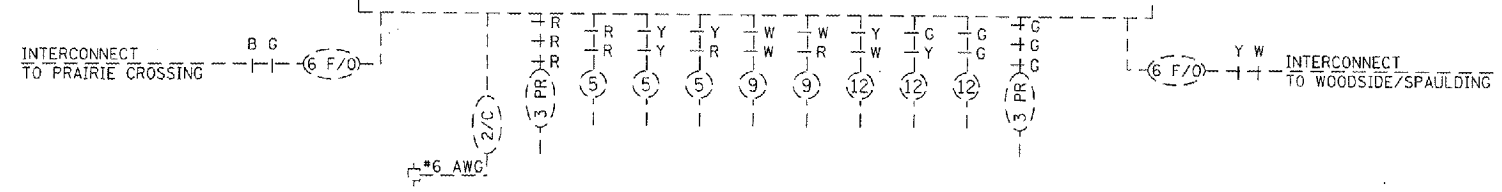
F.A. RTE.	SECTION	COUNTY	TOTAL SHEETS	SHEET NO.
662		SANGAMON	7	5
STA.	TO STA.			
FED. ROAD DIST. NO.	ILLINOIS FED. AID PROJECT			
375-7; 102TS-2; WTS-2)			72846	

### DETECTORS



PHASE DESIGNATION DIAGRAM

### CONTROLLER

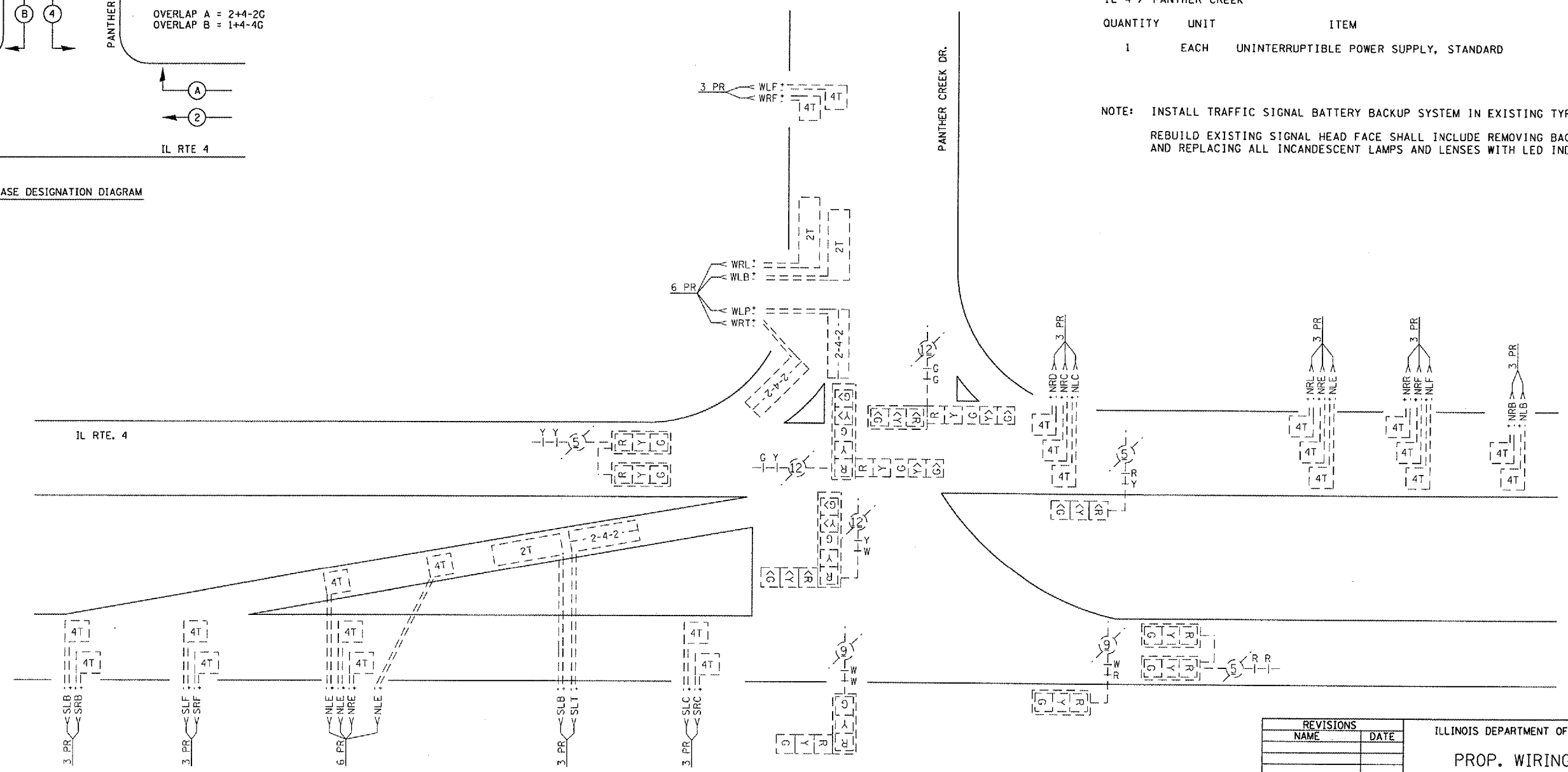


### TRAFFIC SIGNAL QUANTITIES

IL 4 / PANTHER CREEK

QUANTITY	UNIT	ITEM
1	EACH	UNINTERRUPTIBLE POWER SUPPLY, STANDARD

NOTE: INSTALL TRAFFIC SIGNAL BATTERY BACKUP SYSTEM IN EXISTING TYPE IV CABINET  
REBUILD EXISTING SIGNAL HEAD FACE SHALL INCLUDE REMOVING BACK REFLECTOR AND REPLACING ALL INCANDESCENT LAMPS AND LENSES WITH LED INDICATIONS.



REVISIONS	
NAME	DATE

ILLINOIS DEPARTMENT OF TRANSPORTATION  
**PROP. WIRING DIAGRAM**  
IL 4 / PANTHER CREEK  
FAP 662, FAP 658, & FAP 67  
SECTION 375-7; 102TS-2; WTS-2)  
SANGAMON COUNTY

SCALE: VERT.      DRAWN BY KDA  
          HORIZ.      CHECKED BY  
DATE 12-2003

ct:\projects\d656203\ss\_sheets.m32  
12/15/2006  
\*REF 01