

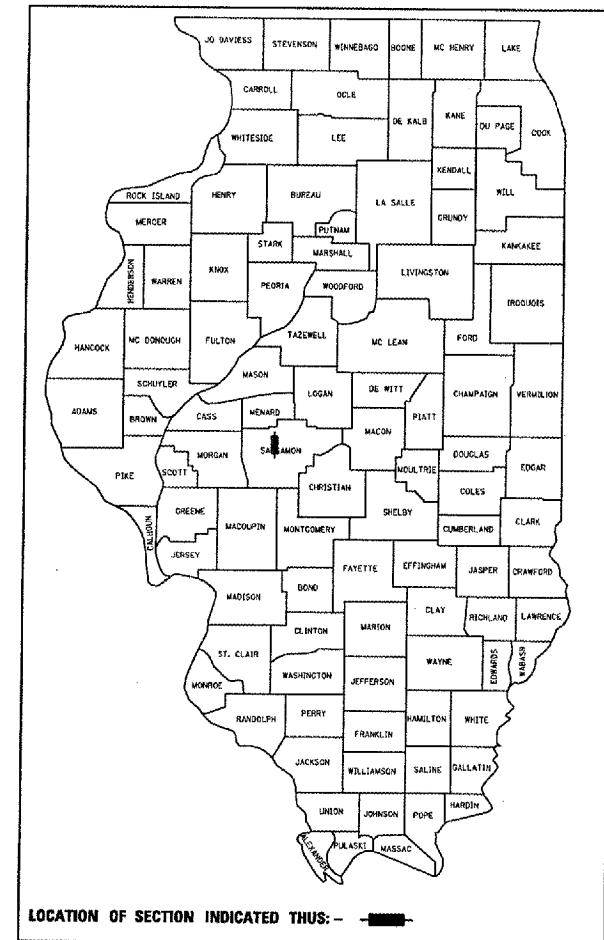
STATE OF ILLINOIS  
DEPARTMENT OF TRANSPORTATION  
DIVISION OF HIGHWAYS

| F.A. RTE. | SECTION | COUNTY   | TOTAL SHEETS | SHEET NO. |
|-----------|---------|----------|--------------|-----------|
| 662       |         | SANGAMON | 7            | 1         |

• 3TS-7; 102TS-2; WITS-2

72846

D-96-562-03



# PROPOSED HIGHWAY PLANS

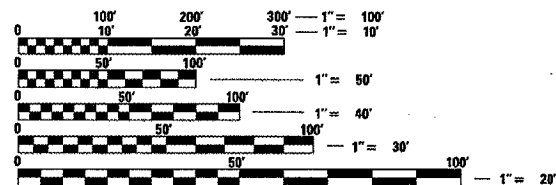
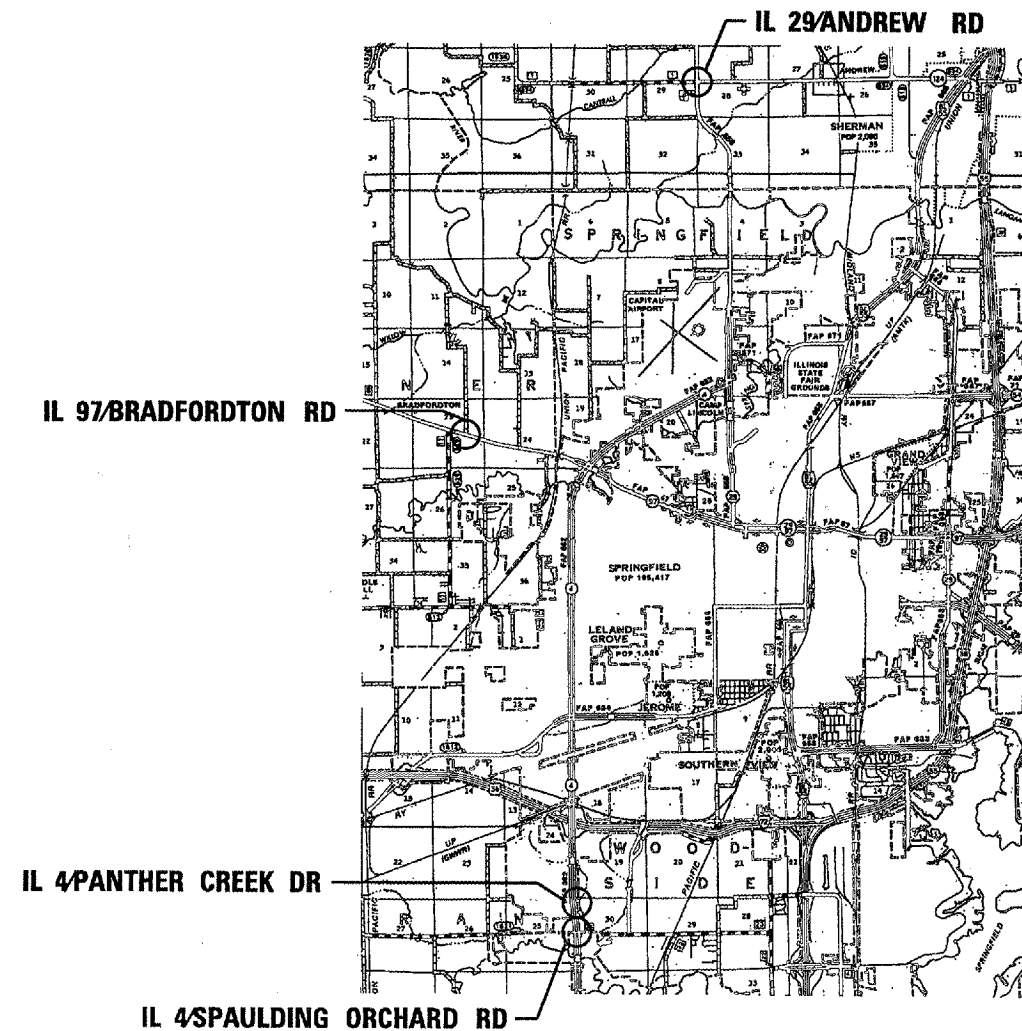
FAP 662 (IL 4), FAP 658 (IL 29), AND FAP 67 (IL 97)  
SECTION 3TS-7;102TS-2;W(TS-2)  
PROJECT: F-0005 (532)  
SANGAMON COUNTY  
C-96-532-07

LIST OF INDEX OF SHEETS

1. COVERSHEET
2. SUMMARY OF QUANTITIES
3. IL 29/ANDREW RD WIRING DIAGRAM
4. IL 97/BRADFORDTON RD WIRING DIAGRAM
5. IL 4/PANTHER CREEK DR WIRING DIAGRAM
6. IL 4/SPAULDING ORCHARD RD WIRING DIAGRAM
7. TRAFFIC SIGNAL LEGEND

LIST OF STANDARDS

- 000001-04  
701001-01  
701006-02  
701011-01  
701101-01  
701106-01
- 702001-06  
857001  
862001



FULL SIZE PLANS HAVE BEEN PREPARED USING STANDARD ENGINEERING SCALES. REDUCED SIZED PLANS WILL NOT CONFORM TO STANDARD SCALES. IN MAKING MEASUREMENTS ON REDUCED PLANS, THE ABOVE SCALES MAY BE USED.

J.U.L.I.E.  
JOINT UTILITY LOCATION INFORMATION FOR EXCAVATION  
1-800-892-0123

CONTRACT NO. 72846

PROJECT ENGINEER: JOHN NEGANGARD (217)782-6990  
SQUAD LEADER: VINCE MADONIA (217)785-9046

STATE OF ILLINOIS  
DEPARTMENT OF TRANSPORTATION  
DIVISION OF HIGHWAYS

SUBMITTED *December 15, 2006*  
*Chris M. Reed*  
DISTRICT ENGINEER

*February 2, 2007*  
*Eric E. Hampp*  
Interim ENGINEER OF DESIGN AND ENVIRONMENT

*February 2, 2007*  
*Milton R. Sev* P.E.  
DIRECTOR, DIVISION OF HIGHWAYS

PRINTED BY THE AUTHORITY  
OF THE STATE OF ILLINOIS

| Code No. | Item  | Unit  | Total | Location 1                            | Location 2                                  | Location 3  | Location 4                             |
|----------|---|-------|-------|---------------------------------------|---|---|--|
|          |   |       |       | IL 29<br>ANDREW RD                    | IL 97<br>BRADFORDTON RD                     | IL 4<br>PANTHER CREEK                                       | IL 4<br>SPAULDING ORCHARD              |
|          |   |       |       | 80% FEDERAL<br>15% STATE<br>5% COUNTY | 80% FEDERAL<br>13.33% STATE<br>6.67% COUNTY | 80% FEDERAL<br>13.33% STATE<br>6.67% CITY OF<br>SPRINGFIELD | 80% FEDERAL<br>10% STATE<br>10% COUNTY |
|          |   |       |       | Y031-1F                               | Y031-1F                                     | Y031-1F   | Y031-1F                                |
| 67100100 | MOBILIZATION                                | L SUM | 1     | 0.25                                  | 0.25  | 0.25  | 0.25                                   |
| 85700300 | FULL-ACTUATED CONTROLLER AND TYPE V CABINET | EACH  | 1     | 0                                     | 0   | 0   | 1                                      |
| 89501250 | RELOCATE EXISTING TRAFFIC SIGNAL EQUIPMENT  | EACH  | 1     | 0                                     | 0   | 0   | 1                                      |
| 89502375 | REMOVE EXISTING TRAFFIC SIGNAL EQUIPMENT    | EACH  | 1     | 0                                     | 0   | 0   | 1                                      |
| 86200200 | UNINTERRUPTIBLE POWER SUPPLY, STANDARD      | EACH  | 4     | 1                                     | 1   | 1   | 1                                      |

**DISTRICT SIX**

EXAMINED December 12 2006  
*[Signature]*  
OPERATIONS ENGINEER

EXAMINED DEC 11 2006  
*[Signature]*  
PROGRAM IMPLEMENTATION ENGINEER

EXAMINED DECEMBER 11 2006  
*[Signature]*  
PROGRAM DEVELOPMENT ENGINEER

| REVISIONS |      | ILLINOIS DEPARTMENT OF TRANSPORTATION<br>SUMMARY OF QUANTITIES<br>FAP 662, FAP 658, & FAP 67<br>SECTION 3TS-7; 102TS-2; WTS-2<br>SANGAMON COUNTY |
|-----------|------|--|
| NAME      | DATE |  |
|           |      |  |
|           |      |  |
|           |      |  |
|           |      |  |
|           |      |  |
|           |      |  |
|           |      |  |
|           |      |  |
|           |      |  |
|           |      |  |
|           |      |  |

SCALE: VERT. : NOT TO SCALE  
HORIZ. :  
DATE : DECEMBER, 2006

DRAWN BY JJB  
CHECKED BY VJM

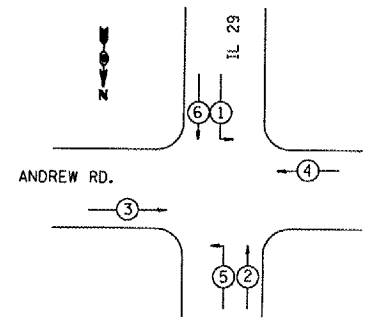
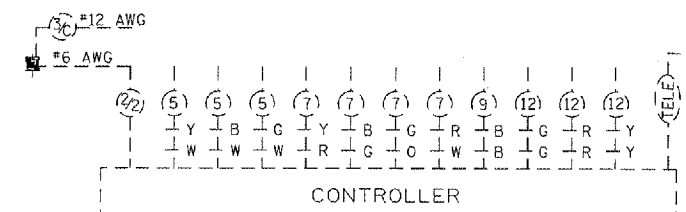
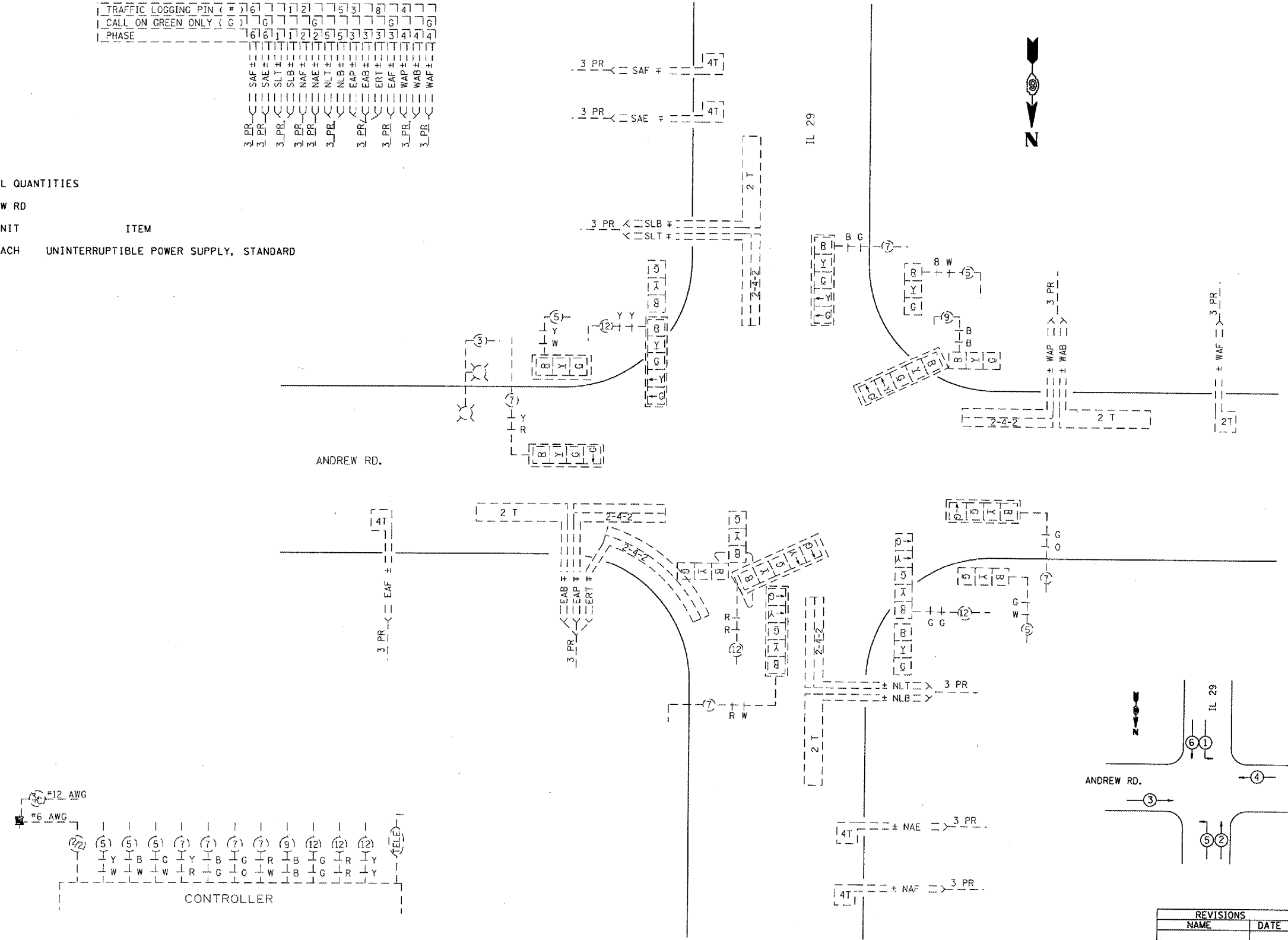
Rev,

|                        |         |          |                  |           |
|------------------------|---------|----------|------------------|-----------|
| F.A.P. RTE.            | SECTION | COUNTY   | TOTAL SHEETS     | SHEET NO. |
| 662                    |         | SANGAMON | 7                | 3         |
| STA.                   | TO STA. |          |                  |           |
| FED. ROAD DIST. NO.    |         | ILLINOIS | FED. AID PROJECT |           |
| 375-7; 102TS-2; WTS-2) |         | 72846    |                  |           |

DETECTORS

|                           |    |   |    |    |    |   |    |
|---------------------------|----|---|----|----|----|---|----|
| TRAFFIC LOGGING PIN ( # ) | 61 | 1 | 21 | 51 | 31 | 8 | 41 |
| CALL ON GREEN ONLY ( C )  | 61 | 1 | 21 | 51 | 31 | 8 | 41 |
| PHASE                     | 61 | 1 | 21 | 51 | 31 | 8 | 41 |
| SAF #                     |    |   |    |    |    |   |    |
| SAE #                     |    |   |    |    |    |   |    |
| SLB #                     |    |   |    |    |    |   |    |
| NAF #                     |    |   |    |    |    |   |    |
| NLT #                     |    |   |    |    |    |   |    |
| NLB #                     |    |   |    |    |    |   |    |
| EAP #                     |    |   |    |    |    |   |    |
| EAB #                     |    |   |    |    |    |   |    |
| ERT #                     |    |   |    |    |    |   |    |
| EAF #                     |    |   |    |    |    |   |    |
| WAP #                     |    |   |    |    |    |   |    |
| WAB #                     |    |   |    |    |    |   |    |
| WAF #                     |    |   |    |    |    |   |    |

TRAFFIC SIGNAL QUANTITIES  
 IL 29 / ANDREW RD  
 QUANTITY UNIT ITEM  
 1 EACH UNINTERRUPTIBLE POWER SUPPLY, STANDARD



| REVISIONS |      |
|-----------|------|
| NAME      | DATE |
|           |      |
|           |      |
|           |      |
|           |      |
|           |      |
|           |      |
|           |      |
|           |      |
|           |      |
|           |      |

ILLINOIS DEPARTMENT OF TRANSPORTATION  
 PROP. WIRING DIAGRAM  
 IL 29 / ANDREW RD  
 FAP 662, FAP 658, & FAP 67  
 SECTION 375-7; 102TS-2; WTS-2)  
 SANGAMON COUNTY  
 SCALE: VERT. \_\_\_\_\_  
 HORIZ. \_\_\_\_\_  
 DATE 12-2003  
 DRAWN BY KDA  
 CHECKED BY \_\_\_\_\_

c:\projects\6656283\ts\_sheets.m32  
 12/15/2005  
 RET 01

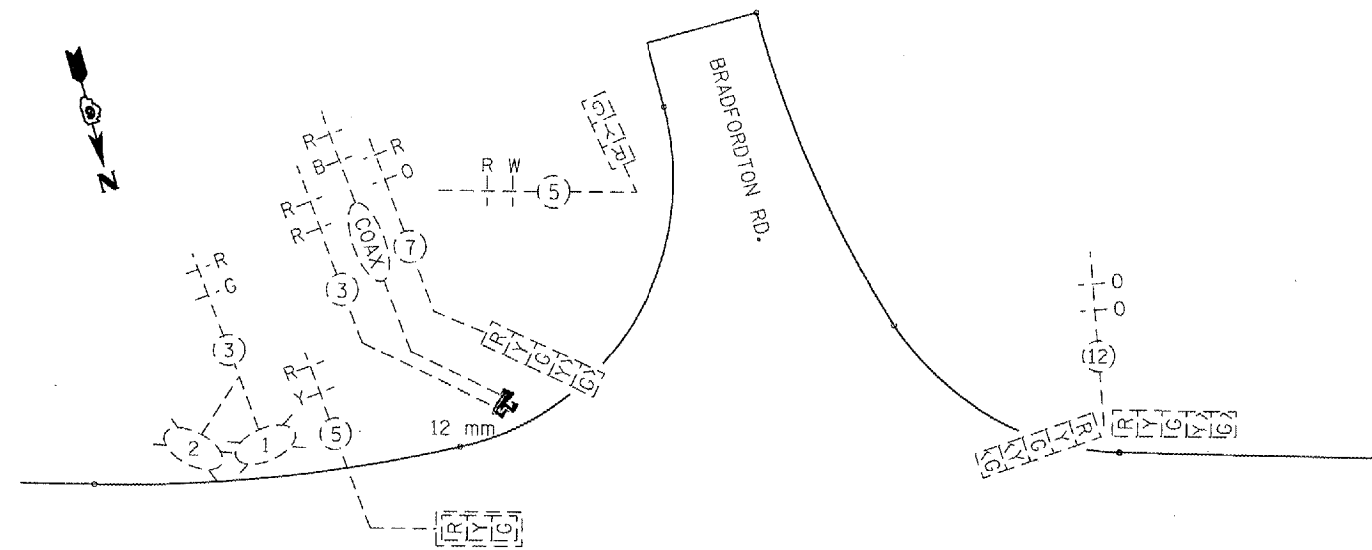
|                        |          |                  |              |           |
|------------------------|----------|------------------|--------------|-----------|
| F.A. RTE.              | SECTION  | COUNTY           | TOTAL SHEETS | SHEET NO. |
| 662                    |          | SANGAMON         | 7            | 4         |
| STA.                   | TO STA.  |                  |              |           |
| FED. ROAD DIST. NO.    | ILLINOIS | FED. AID PROJECT |              |           |
| 3TS-7; 102TS-2; WITS-2 |          |                  |              | 72846     |

TRAFFIC SIGNAL QUANTITIES

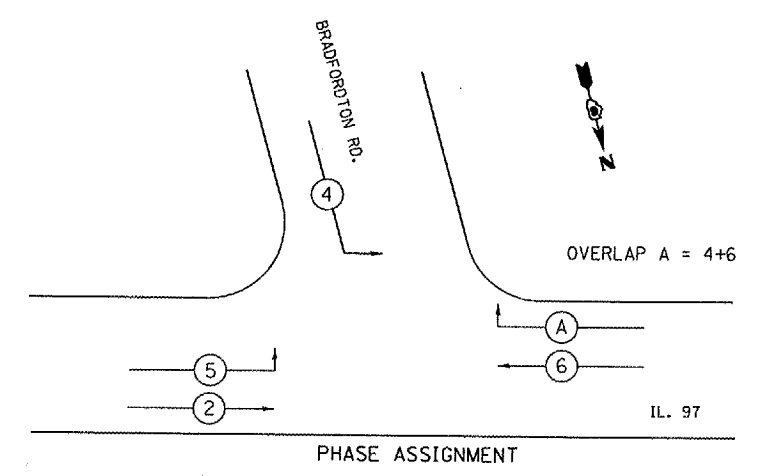
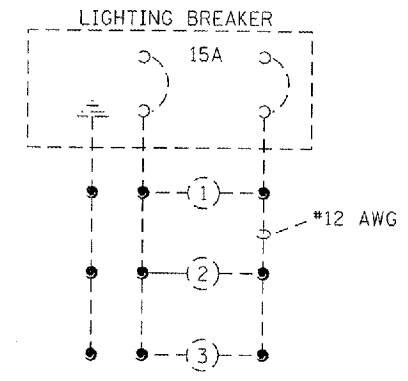
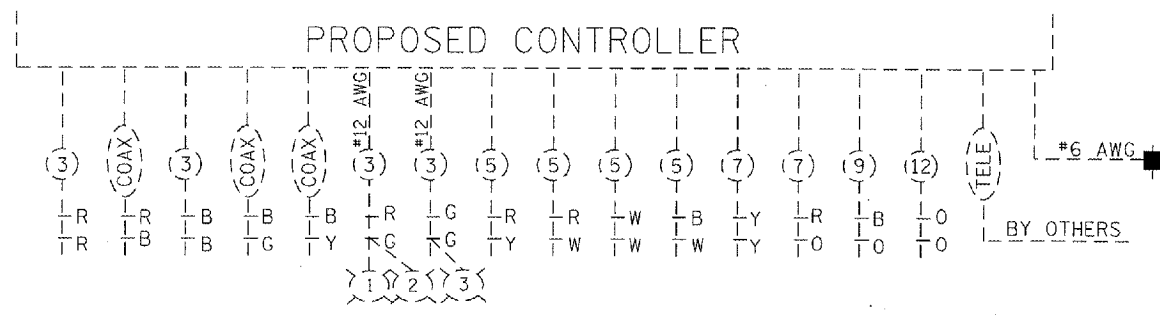
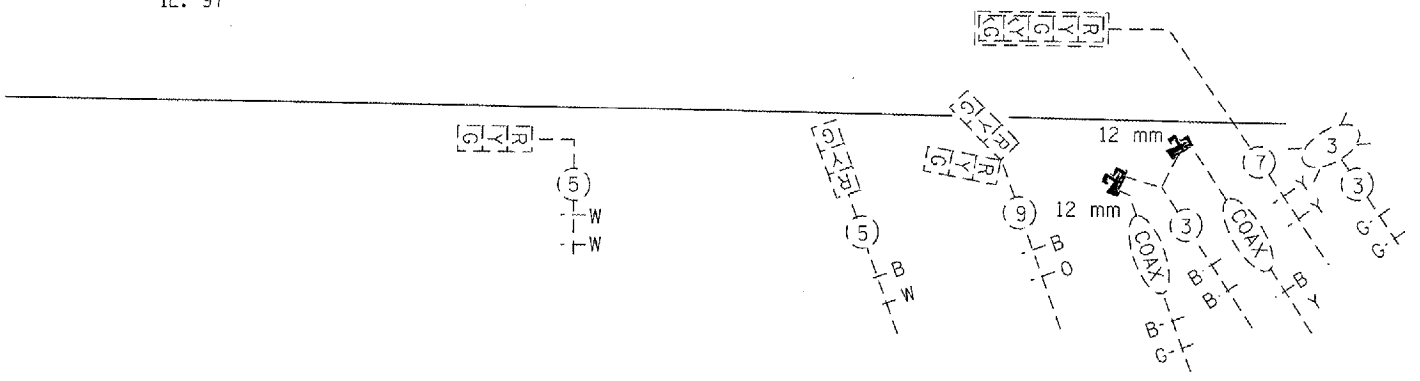
IL 97 / BRADFORDTON RD

| QUANTITY | UNIT | ITEM                                   |
|----------|------|--|
| 1        | EACH | UNINTERRUPTIBLE POWER SUPPLY, STANDARD |

NOTE: INSTALL TRAFFIC SIGNAL BATTERY BACKUP SYSTEM IN EXISTING TYPE IV CABINET



IL. 97



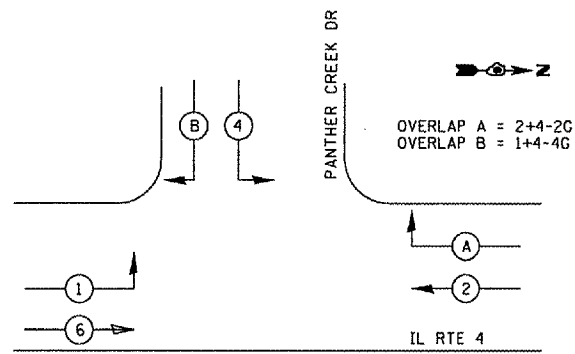
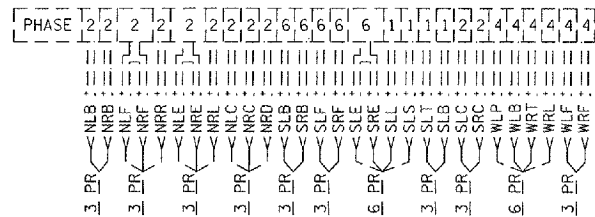
| REVISIONS |      |
|-----------|------|
| NAME      | DATE |
|           |      |
|           |      |
|           |      |
|           |      |
|           |      |
|           |      |
|           |      |
|           |      |
|           |      |
|           |      |

ILLINOIS DEPARTMENT OF TRANSPORTATION  
**PROP. WIRING DIAGRAM**  
 IL 97 / BRADFORDTON RD  
 FAP 662, FAP 658, & FAP 67  
 SECTION 37TS-7; 102TS-2; WITS-2  
 SANGAMON COUNTY  
 SCALE: VERT. \_\_\_\_\_  
 HORIZ. \_\_\_\_\_  
 DATE 12-2003  
 DRAWN BY KDA  
 CHECKED BY \_\_\_\_\_

c:\projects\656203\ts\_sheets.m32  
 12/15/2003  
 \*REF 01

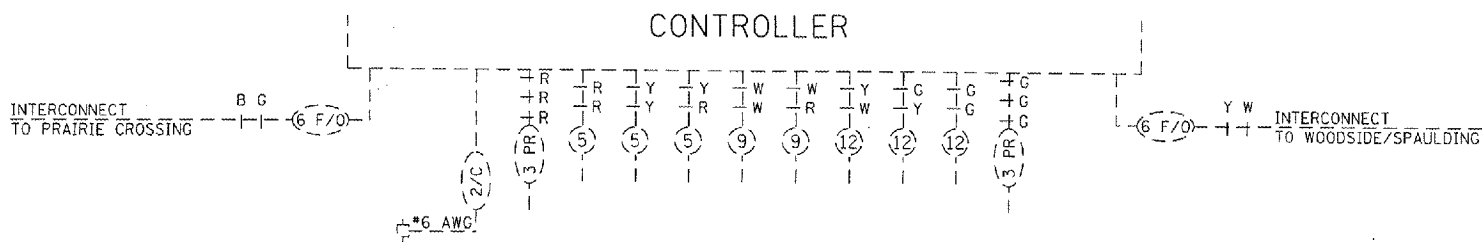
| F.A. RTE.                                     | SECTION | COUNTY   | TOTAL SHEETS | SHEET NO. |
|---|---------|----------|--------------|-----------|
| 662   |         | SANGAMON | 7            | 5         |
| STA. _____ TO STA. _____                      |         |          |              |           |
| FED. ROAD DIST. NO. ILLINOIS FED. AID PROJECT |         |          |              |           |
| 375-7; 102TS-2; WTS-2)                        |         |          |              | 72846     |

### DETECTORS



PHASE DESIGNATION DIAGRAM

### CONTROLLER

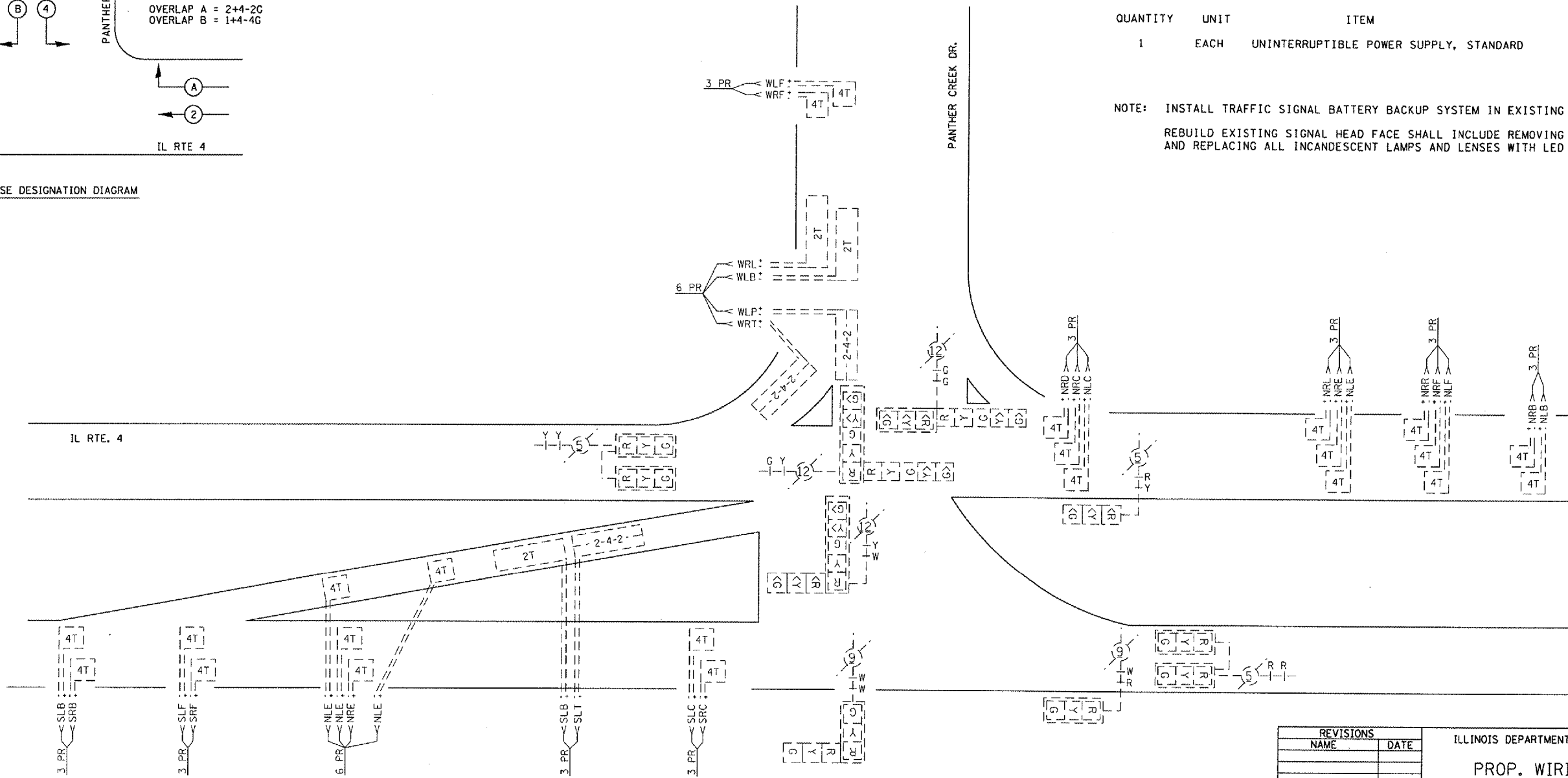


### TRAFFIC SIGNAL QUANTITIES

IL 4 / PANTHER CREEK

| QUANTITY | UNIT | ITEM                                   |
|----------|------|--|
| 1        | EACH | UNINTERRUPTIBLE POWER SUPPLY, STANDARD |

NOTE: INSTALL TRAFFIC SIGNAL BATTERY BACKUP SYSTEM IN EXISTING TYPE IV CABINET  
REBUILD EXISTING SIGNAL HEAD FACE SHALL INCLUDE REMOVING BACK REFLECTOR AND REPLACING ALL INCANDESCENT LAMPS AND LENSES WITH LED INDICATIONS.



| REVISIONS |      |
|-----------|------|
| NAME      | DATE |
|           |      |
|           |      |
|           |      |
|           |      |
|           |      |
|           |      |
|           |      |
|           |      |
|           |      |
|           |      |

ILLINOIS DEPARTMENT OF TRANSPORTATION  
**PROP. WIRING DIAGRAM**  
IL 4 / PANTHER CREEK  
FAP 662, FAP 658, & FAP 67  
SECTION 375-7; 102TS-2; WTS-2)  
SANGAMON COUNTY

SCALE: VERT. \_\_\_\_\_  
HORIZ. \_\_\_\_\_  
DATE 12-2003  
DRAWN BY KDA  
CHECKED BY \_\_\_\_\_



### TRAFFIC SIGNAL PLAN LEGEND

| EXISTING | PROPOSED | DESCRIPTION  |
|----------|----------|--|
|          |          | SIGNAL HEAD  |
|          |          | SIGNAL HEAD WITH BACKPLATE   |
|          |          | TEMPORARY SIGNAL HEAD  |
|          |          | PEDESTRIAN SIGNAL HEAD   |
|          |          | PEDESTRIAN PUSHBUTTON DETECTOR   |
|          |          | DETECTOR LOOP  |
|          |          | QUADRAPOLE DETECTOR LOOP   |
|          |          | SIGNAL POST  |
|          |          | ALUMINUM MAST ARM ASSEMBLY AND POLE  |
|          |          | STEEL MAST ARM ASSEMBLY AND POLE   |
|          |          | WOOD POLE  |
|          |          | WOOD POLE WITH GUY   |
|          |          | SERVICE INSTALLATION   |
|          |          | CONTROLLER   |
|          |          | HANDHOLE   |
|          |          | HEAVY DUTY HANDHOLE  |
|          |          | DOUBLE HANDHOLE  |
|          |          | JUNCTION BOX   |
|          |          | GULFBOX JUNCTION   |
|          |          | AERIAL CABLE   |
|          |          | CONDUIT<br>LENGTH - CONSTRUCTION (T=TRENCH P=PUSHED A=AUGERED E=EXISTING)<br>SIZE - TYPE (S=STEEL P=PVC F=FIBER DUCT U=UNI-DUCT) |
|          |          | CONDUIT SPLICE   |
|          |          | SPAN WIRE / TETHER WIRE  |
|          |          | SIDEWALK REMOVAL IN SQ FT  |
|          |          | PC CONC SDWLK 4 IN. IN SQ FT   |
|          |          | PC CONC SDWLK 4 IN. SPECIAL IN SQ FT   |

### TRAFFIC SIGNAL WIRING DIAGRAM LEGEND

| EXISTING | PROPOSED | DESCRIPTION  |
|----------|----------|--|
|          |          | 8" SIGNAL SECTION  |
|          |          | 12" SIGNAL SECTION   |
|          |          | DIRECTIONAL SIGNAL SECTION   |
|          |          | 9" PEDESTRIAN SIGNAL FACE  |
|          |          | 12" PEDESTRIAN SIGNAL FACE   |
|          |          | SIGNAL FACE WITH BACKPLATE   |
|          |          | PROGRAMMED SIGNAL SECTION  |
|          |          | SIGNAL SECTION WITH LOUVRE   |
|          |          | DUAL-INDICATION SIGNAL SECTION   |
|          |          | INDUCTION DETECTOR LOOP  |
|          |          | QUADRAPOLE DETECTOR LOOP   |
|          |          | DIRECT-CONNECTED LOOP LEAD-IN ( TWISTED )  |
|          |          | ELECTRIC CABLE DENOTING NUMBER OF CONDUCTORS   |
|          |          | ELECTRIC CABLE TO BE REMOVED   |
|          |          | ELECTRIC CABLE IDENTIFIER TAPE CODES<br>(R= RED W= WHITE Y= YELLOW G= GREEN B= BLUE O= ORANGE) |
|          |          | PEDESTRIAN PUSHBUTTON DETECTOR   |

| REVISIONS |      |
|-----------|------|
| NAME      | DATE |
|           |      |
|           |      |
|           |      |
|           |      |
|           |      |
|           |      |
|           |      |
|           |      |
|           |      |
|           |      |

ILLINOIS DEPARTMENT OF TRANSPORTATION

**TRAFFIC SIGNAL LEGEND**

FAP 662, FAP 658, & FAP 67  
SECTION 3775-7; 102TS-2; WTS-2  
SANGAMON COUNTY

SCALE: VERT.  
HORIZ.  
DATE

DRAWN BY  
CHECKED BY