

72993

F.A.P. RTE.	SECTION	COUNTY	TOTAL SHEETS	SHEET NO.
662		MACOUPIN	106	1
			+ 5	
			= 111	

• (V,T)B-2

D-96-526-05

STATE OF ILLINOIS
DEPARTMENT OF TRANSPORTATION
DIVISION OF HIGHWAYS

PROPOSED HIGHWAY PLANS

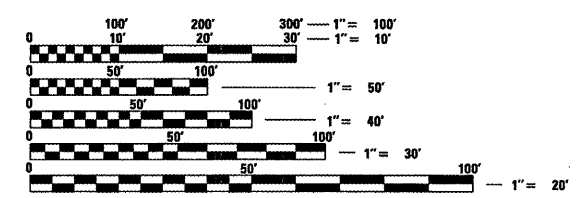
FAP ROUTE: 662 (IL 4)
SECTION: (V,T)B-2
PROJECT NO: ACF-0005(470)
MACOUPIN COUNTY
BRIDGE REMOVAL & REPLACEMENT
C-96-515-06

INDEX OF SHEETS

- 1 COVER SHEET
- 2 GENERAL NOTES & COMMITMENTS
- 3 - 6 SUMMARY OF QUANTITIES
- 7 - 9 SCHEDULE OF QUANTITIES
- 10-10A. TYPICAL SECTIONS & BUTT JOINT DETAILS
- 11 SURVEY ALIGNMENT
- 12 BENCHMARK, CROSS TIES
- 13 - 18 PLAN AND PROFILE SHEETS
- 19 - 24 STAGING PLANS
- 25 WIDTH RESTRICTION SIGNAGE
- 26 TEMPORARY BRIDGE TRAFFIC SIGNAL LOOP PLACEMENT DETAIL
- 27 - 46 STRUCTURE PLANS 059-0504 (INCLUDING SOIL BORINGS)
- 47 - 66 CROSS SECTIONS

STANDARDS

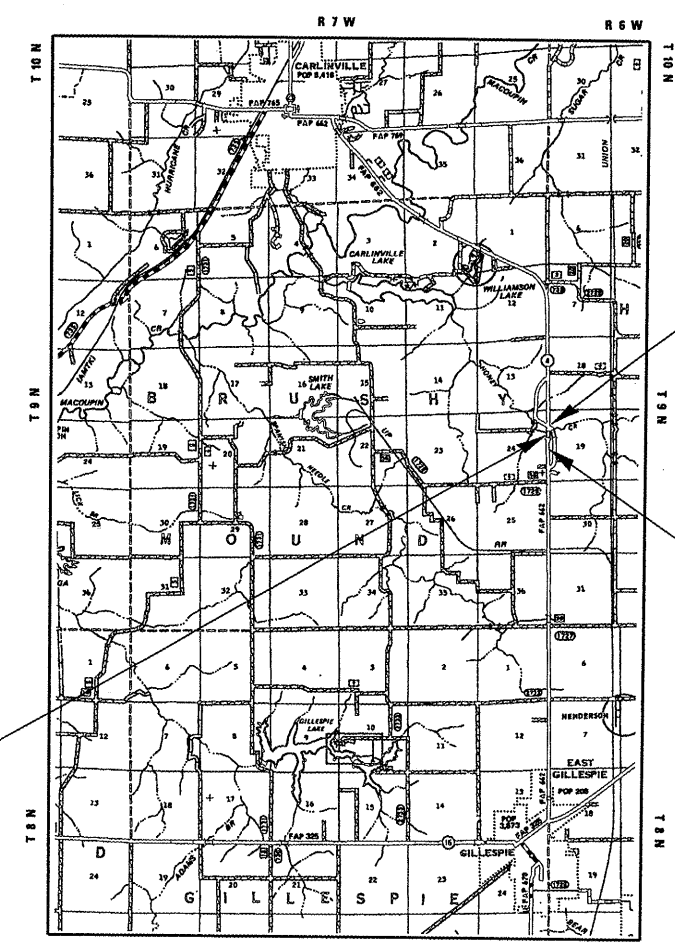
- 000001-04 701006-02
- 001001-01 701011-01
- 001006 701301-02
- 280001-03 701306-01
- 420401-05 701311-02
- 515001-02 701321-08
- 630001-07 702001-06
- 630301-04 704001-03
- 631032-03 780001-01
- 701001-01 781001-02
- 701201-02



FULL SIZE PLANS HAVE BEEN PREPARED USING STANDARD ENGINEERING SCALES. REDUCED SIZED PLANS WILL NOT CONFORM TO STANDARD SCALES. IN MAKING MEASUREMENTS ON REDUCED PLANS, THE ABOVE SCALES MAY BE USED.

J.U.L.I.E.
JOINT UTILITY LOCATION INFORMATION FOR EXCAVATION
1-800-892-0123

CONTRACT NO. 72993



BEGIN PROJECT
STA 441+00

END PROJECT
STA 452+00

STA 447+03.80
PROJECT INCLUDES
BRIDGE REMOVAL AND
REPLACEMENT
OF SN 059-0008
EX 3 - SPAN BRIDGE;
108'-0" BK TO BK ABUT.
33'-8" OUT TO OUT
WITH PROP
SN 059-0504 SINGLE
SPAN 89'-0" BK TO BK
39'-2" OUT TO OUT

AVERAGE DAILY TRAFFIC: 3150 (2005)
SU: 150
MU: 225

LAYOUT MAP
GROSS LENGTH OF PROJECT = 1100 FT. = 0.208 MI.
NET LENGTH OF PROJECT = 1100 FT. = 0.208 MI.



LOCATION OF SECTION INDICATED THUS: - [rectangle] -

STATE OF ILLINOIS
DEPARTMENT OF TRANSPORTATION
DIVISION OF HIGHWAYS

SUBMITTED *Dec 19 2006*
Chris M. Reed
DISTRICT ENGINEER

February 2, 2007
Eric E. Hart
ENGINEER OF DESIGN AND ENVIRONMENT

February 2, 2007
Milton R. Seas P.E.
DIRECTOR, DIVISION OF HIGHWAYS

PRINTED BY THE AUTHORITY
OF THE STATE OF ILLINOIS

Rev.

PROJECT ENGINEER: JOHN NEGANGARD (217) 782-6890
SR. SQUAD LEADER: MARK DUST (217) 785-0597