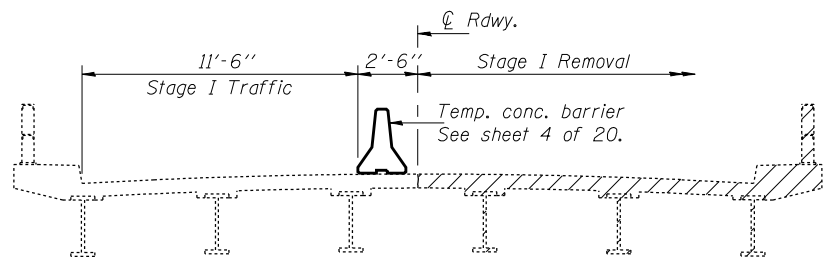


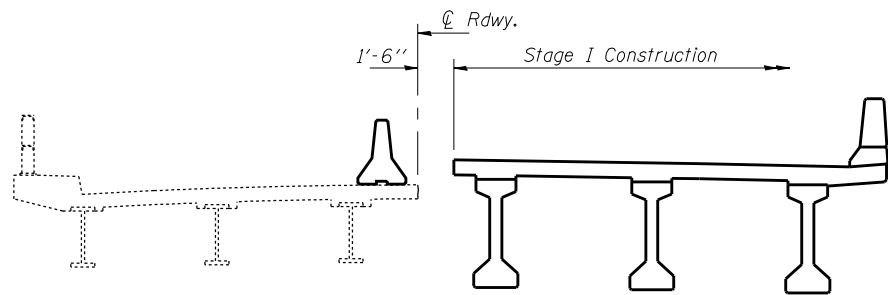
STATE OF ILLINOIS  
DEPARTMENT OF TRANSPORTATION

| ROUTE NO.             | SECTION  | COUNTY           | TOTAL SHEETS | SHEET NO. | SHEET NO. |
|-----------------------|----------|------------------|--------------|-----------|-----------|
| FAP 662               | V,T)B-2  | MACOUPIN         | 66           | 28        | 20 SHEETS |
| FED. ROAD DIST. NO. 7 | ILLINOIS | FED. AID PROJECT |              |           |           |

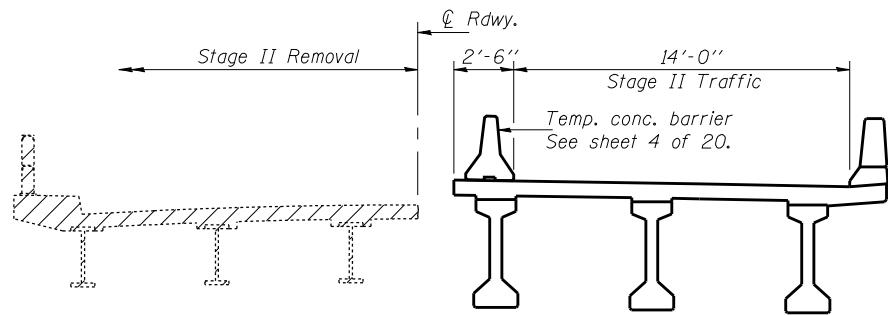
Contract #72993



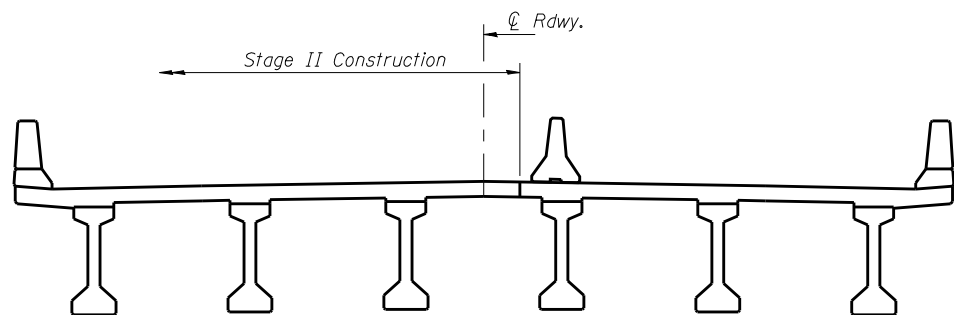
\*\*\*STAGE I REMOVAL



STAGE I CONSTRUCTION



\*\*\*STAGE II REMOVAL



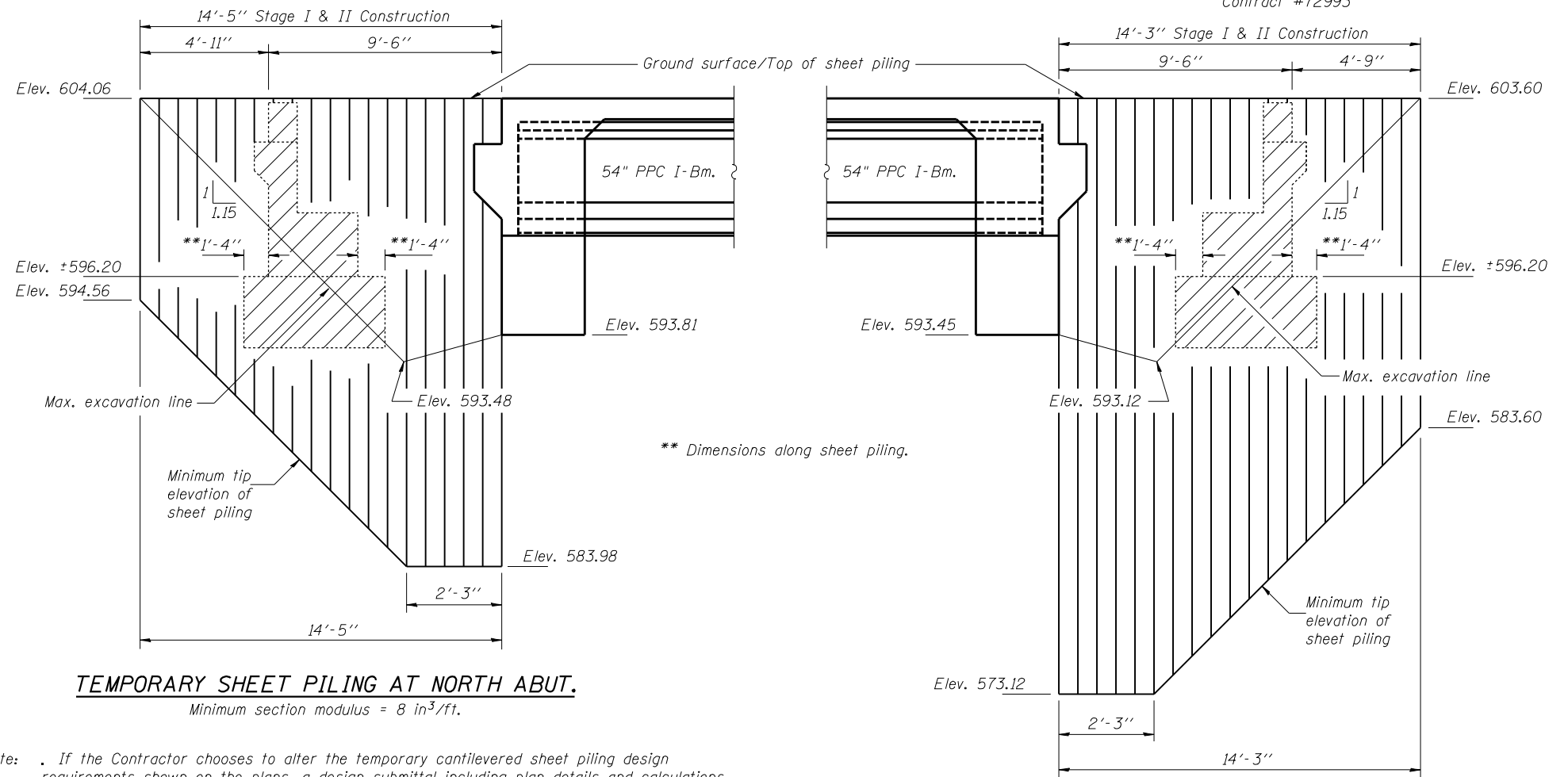
STAGE II CONSTRUCTION

\*\*\* Stage removal lines shown are for superstructure and abutments.  
Stage removal lines for existing piers are different, see sheet 3 of 20.

- Notes:
- Hatched area indicates Removal of Existing Structures.
  - For quantity of Temporary Concrete Barrier, see Roadway Plans.
  - All staging cross sections are looking south.

|          |            |
|----------|------------|
| DESIGNED | DPN        |
| CHECKED  | AJB        |
| DRAWN    | h.t. duong |
| CHECKED  | AJB/DPN    |

Jan 23, 2007  
EXAMINED *Thomas J. Domagalicki*  
ENGINEER OF BRIDGE DESIGN  
PASSED *Ralph E. Anderson*  
ENGINEER OF BRIDGES AND STRUCTURES



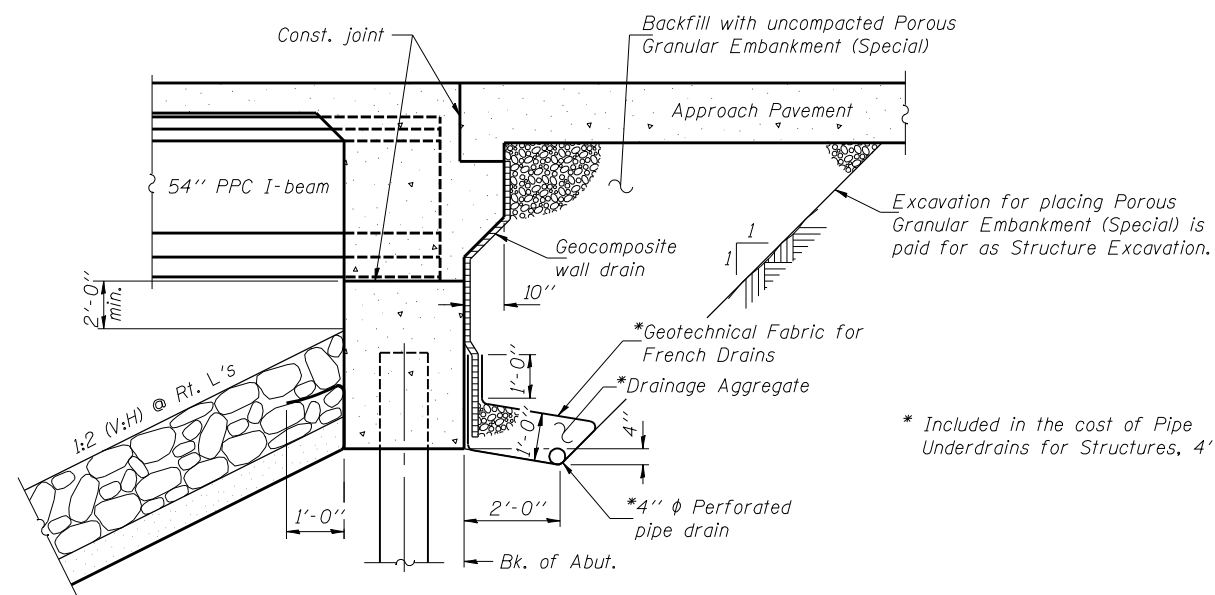
TEMPORARY SHEET PILING AT NORTH ABUT.

Minimum section modulus = 8 in<sup>3</sup>/ft.

TEMPORARY SHEET PILING AT SOUTH ABUT.

Minimum section modulus = 24 in<sup>3</sup>/ft.

Note: If the Contractor chooses to alter the temporary cantilevered sheet piling design requirements shown on the plans, a design submittal including plan details and calculations will be required for review and acceptance by the Engineer.



SECTION THRU INTEGRAL ABUTMENT

(Horiz. dim. @ Rt. L's)

All drainage system components shall extend to 2'-0" from the end of each wingwall except an outlet pipe shall extend until intersecting with the side slopes. The pipes shall drain into concrete headwalls. (See Article 601.05 of the Std. Spec's. and Highway Standard 601101).

STAGE CONSTRUCTION DETAILS  
F.A.P. RT. 662 SECTION (V,T)B-2  
MACOUPIN COUNTY  
STATION 447+03.80  
STRUCTURE NO. 059-0504