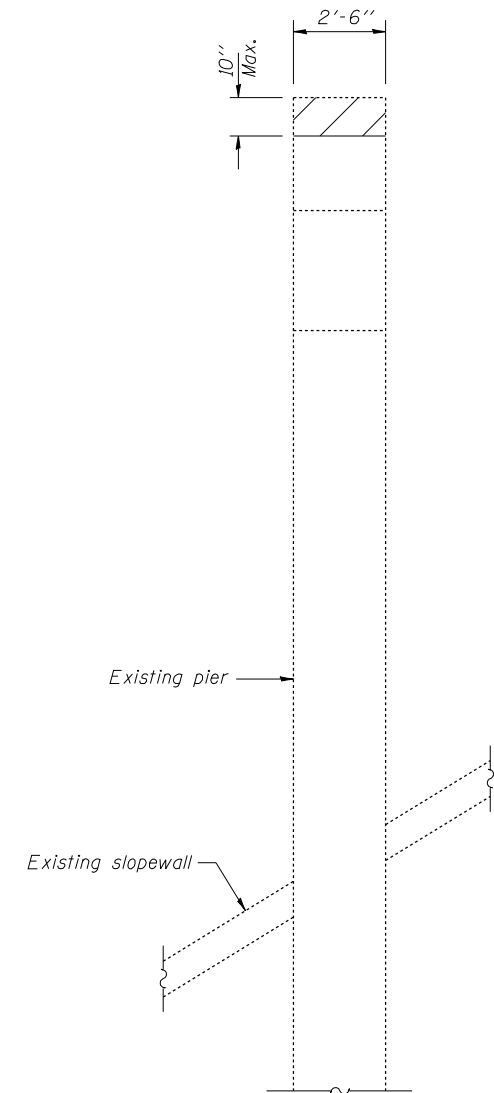
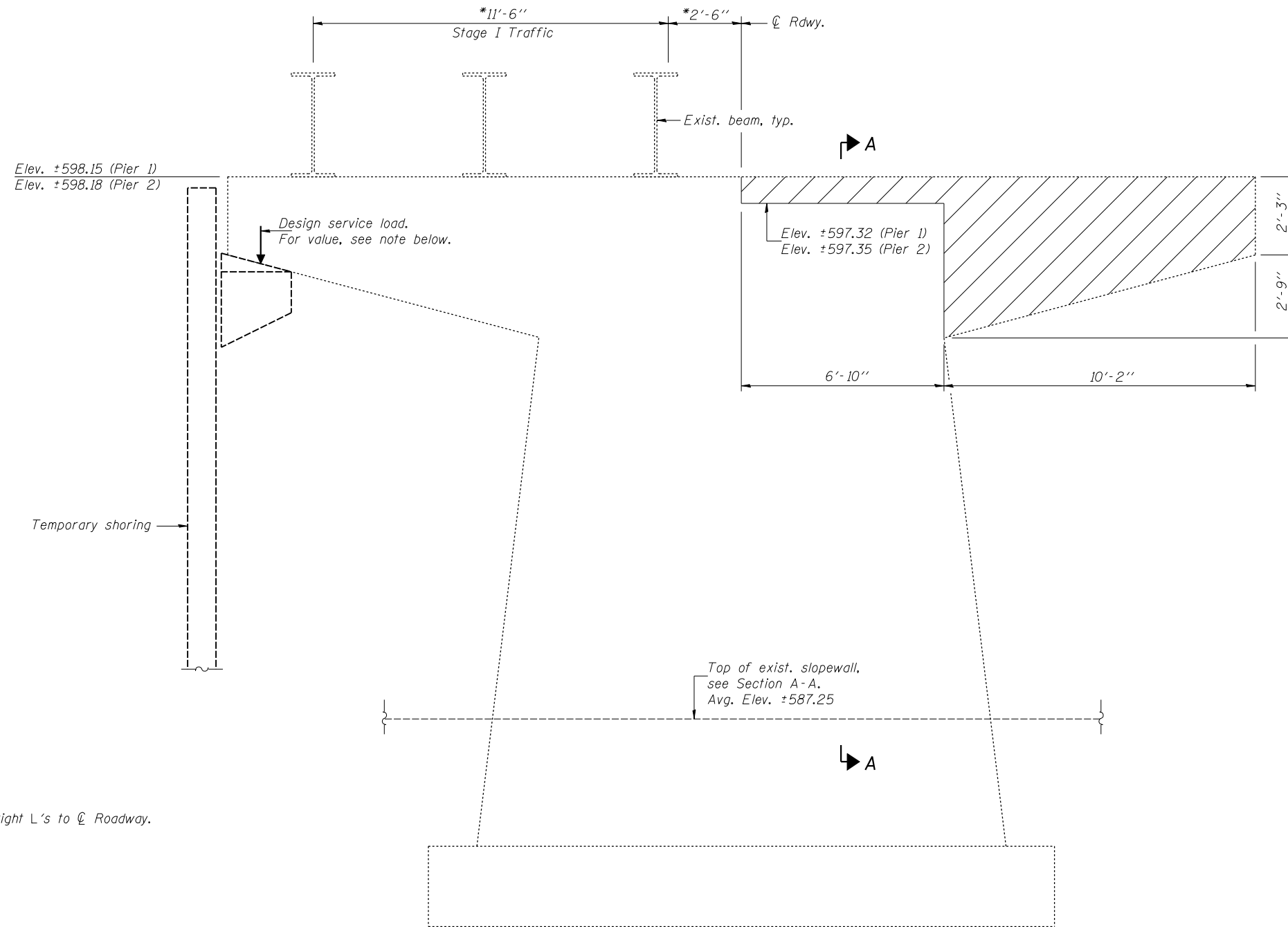


STATE OF ILLINOIS  
DEPARTMENT OF TRANSPORTATION

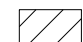
ROUTE NO.	SECTION	COUNTY	TOTAL SHEETS	SHEET NO.	SHEET NO. 3
FAP 662	V.T)B-2	MACOUPIN	66	29	20 SHEETS
FED. ROAD DIST. NO. 7	ILLINOIS	FED. AID PROJECT			

Contract #72993



SECTION A - A

**ELEVATION - EXISTING PIERS 1 & 2**  
(Looking south - Pier 1 shown; Pier 2 similar)

 Hatched area indicates the maximum portion of the existing pier that may be removed during Stage I Removal to allow Stage I Construction. Remaining portions of the existing pier that are to be removed shall be removed during Stage II Removal. Cost included with Removal of Existing Structures.

**BILL OF MATERIAL**

Item	Unit	Total
Temporary Shoring	Each	2

**TEMPORARY SHORING DETAILS**  
**AT EXISTING PIERS**  
**F.A.P. RT. 662 SECTION (V.T)B-2**  
**MACOUPIN COUNTY**  
**STATION 447+03.80**  
**STRUCTURE NO. 059-0504**

- Notes:
- The existing piers shall be shored as shown on this sheet prior to beginning Stage I Removal. The temporary shoring shall remain in place until Stage Traffic has been moved to the Stage I Construction location. See Special Provision. (See sheet 2 of 20 for Stage Construction Details.)
  - Temporary shoring shall not be supported on any part of the pier, its footing or the existing slopewall.
  - Design service load at support contact as shown is 125 kips.

Elev. +598.15 (Pier 1)  
Elev. +598.18 (Pier 2)

Design service load.  
For value, see note below.

Elev. +597.32 (Pier 1)  
Elev. +597.35 (Pier 2)

Top of exist. slopewall,  
see Section A-A.  
Avg. Elev. +587.25

Temporary shoring

\* Dimensions at right L's to  $\varnothing$  Roadway.

DESIGNED	DPN
CHECKED	AJB
DRAWN	h.t. duong
CHECKED	AJB/DPN

Jan 23, 2007  
EXAMINED *Thomas J. Domagala*  
ENGINEER OF BRIDGE DESIGN  
PASSED *Ralph E. Anderson*  
ENGINEER OF BRIDGES AND STRUCTURES