

F.A.P. RTE.	SECTION	COUNTY	TOTAL SHEETS	SHEET NO.
717	101B-1	LOGAN	49	2
STA.		TO STA.		
FED. ROAD DIST. NO.		ILLINOIS FED. AID PROJECT		

GENERAL NOTES

- ALL OF THE DISTURBED AREAS WITHIN THE RIGHT OF WAY NOT COVERED BY SURFACING MATERIAL SHALL BE SEEDED.
- CONTRACTOR SHALL PROVIDE ADEQUATE DRAINAGE AND EROSION PROTECTION FOR THE DURATION OF THIS PROJECT.
- SEEDING WILL NOT BE PERMITTED AT ANY TIME WHEN THE GROUND IS FROZEN, WET OR IN AN UNTILLABLE CONDITION. LOCATIONS TO BE SEEDED SHALL BE DETERMINED BY THE ENGINEER.
- THE CONTRACTOR SHALL BE RESPONSIBLE FOR PROTECTING UTILITY PROPERTY FROM CONSTRUCTION OPERATIONS AS OUTLINED IN ARTICLE 107.31 OF THE STANDARD SPECIFICATIONS. THE JULIE NUMBER IS 800-892-0123. A MINIMUM OF FORTY-EIGHT HOURS ADVANCE NOTICE IS REQUIRED. ANY DAMAGE TO THE UNDERGROUND FACILITIES, CAUSED BY THE CONTRACTOR SHALL BE REPAIRED TO THE SATISFACTION OF THE DEPARTMENT AT THE CONTRACTOR'S EXPENSE, INCLUDING TEMPORARY REPAIRS WHICH MAY BE REQUIRED TO KEEP THE FACILITY OPERATIONAL WHILE MATERIAL IS BEING OBTAINED TO MAKE PERMANENT REPAIRS.
- THE LOCATIONS OF THOSE BURIED AND ABOVEGROUND UTILITIES SHOWN ARE APPROXIMATE, ARE SHOWN FOR CONTRACTOR INFORMATIONAL USE ONLY, AND ARE NOT TO BE REFERENCED FOR CONSTRUCTIONS PURPOSES. THE IMPLIED PRESENCE OR ABSENCE OF UTILITIES IS NOT TO BE CONSTRUED BY THE OWNER, ENGINEER, CONTRACTOR, OR SUBCONTRACTORS TO BE AN ACCURATE AND COMPLETE REPRESENTATION OF UTILITIES THAT MAY OR MAY NOT EXIST ON THE CONSTRUCTION SITE. BURIED AND ABOVEGROUND UTILITY LOCATION, IDENTIFICATION, AND MARKING ARE THE SOLE RESPONSIBILITY OF THE CONTRACTOR. REROUTING, DISCONNECTION, PROTECTION, ETC. OF ANY UTILITIES MUST BE COORDINATED BETWEEN THE CONTRACTOR, UTILITY COMPANY, AND OWNER. SITE SAFETY, INCLUDING THE AVOIDANCE OF HAZARDS ASSOCIATED WITH BURIED AND ABOVEGROUND UTILITIES, REMAINS THE SOLE RESPONSIBILITY OF THE CONTRACTOR.
- THE THICKNESS OF HOT-MIX ASPHALT SHOWN ON THE PLANS IS THE NOMINAL THICKNESS. DEVIATIONS FROM THE NOMINAL THICKNESS WILL BE PERMITTED WHEN SUCH DEVIATIONS OCCUR DUE TO IRREGULARITIES IN THE EXISTING SURFACE OR BASE ON WHICH THE HOT-MIX ASPHALT IS PLACED.
- WHERE SECTION OR SUBSECTION MONUMENTS ARE ENCOUNTERED, THE ENGINEER SHALL BE NOTIFIED BEFORE SUCH MONUMENTS ARE REMOVED. THE CONTRACTOR SHALL PROTECT AND CAREFULLY PRESERVE ALL MONUMENTS UNTIL AN AUTHORIZED SURVEYOR OR AGENT HAS WITNESSED OR OTHERWISE REFERENCED THEIR LOCATION. THE CONTRACTOR SHALL BE RESPONSIBLE FOR HAVING AN AUTHORIZED SURVEYOR RE-ESTABLISH ANY SECTION OR SUBSECTION MONUMENTS DESTROYED BY HIS OPERATIONS.

8. THE FOLLOWING RATES OF APPLICATION HAVE BEEN USED IN CALCULATING PLAN QUANTITIES:

GRANULAR MATERIALS	2.05	TONS/CU YD
BITUMINOUS MATERIAL (PRIME COAT)	0.00038	TON/SQ YD
HOT-MIX ASPHALT SURFACE COURSE	112	LBS/SQ YD/IN
HOT-MIX ASPHALT BINDER COURSE	112	LBS/SQ YD/IN
AGGREGATE (PRIME COAT)	0.002	TON/SQ YD
RIPRAP	1.75	TON/CU YD

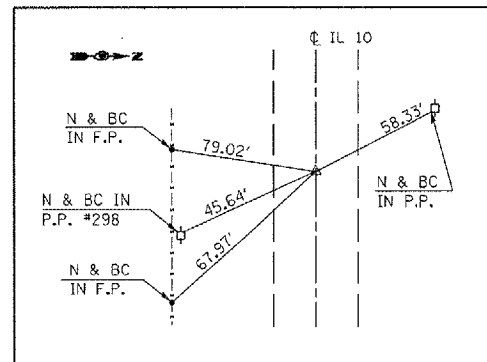
- ANY REFERENCE TO A STANDARD IN THESE PLANS SHALL BE INTERPRETED TO MEAN THE EDITION AS INDICATED BY THE SUBNUMBER LISTED ON THE INDEX OF SHEETS OR THE COPY OF THE STANDARD INCLUDED IN THESE PLANS.
- UNLESS NOTED OTHERWISE, STATIONS AND OFFSETS REFER TO CENTERLINE OF PROJECT.
- LAYOUT OF RIPRAP MAY BE VARIED IN THE FIELD TO SUIT GROUND CONDITIONS AS DIRECTED BY THE ENGINEER.
- EVERY TREE SHALL BE SAVED IF POSSIBLE. THE ENGINEER IN THE FIELD WILL VERIFY AND MARK ALL TREES REQUIRED TO BE REMOVED. SHOULD THE ENGINEER'S DECISION INCREASE OR DECREASE THE QUANTITIES OF WORK TO BE PERFORMED FROM THE PLANS, THE CONTRACTOR SHALL ACCEPT PAYMENT AS STATED IN ARTICLE 104.02 OF THE STANDARD SPECIFICATIONS. TREES OUTSIDE THE LIMITS OF CONSTRUCTION SHALL NOT BE DISTURBED UNLESS DESIGNATED BY THE ENGINEER.
- IN ADDITION TO FIELD SURVEYS AND AERIAL SURVEYS, PLAN DIMENSIONS AND DETAILS RELATIVE TO THE EXISTING FACILITIES HAVE BEEN TAKEN FROM EXISTING PLANS AND ARE SUBJECT TO CONSTRUCTION VARIATIONS. IT SHALL BE THE CONTRACTOR'S RESPONSIBILITY TO VERIFY SUCH DIMENSIONS AND DETAILS IN THE FIELD. SUCH VARIATIONS SHALL NOT BE A CAUSE FOR ADDITIONAL COMPENSATION DUE TO A CHANGE IN THE SCOPE OF THE WORK. HOWEVER, THE CONTRACTOR WILL BE PAID FOR THE QUANTITY ACTUALLY FURNISHED AT THE UNIT PRICE BID FOR THE WORK.
- THE GRADING AND SHAPING OF THE DITCHES SHALL BE DONE IN SUCH A MANNER TO ESTABLISH POSITIVE FLOW BETWEEN DRAINAGE STRUCTURES, OR BETWEEN THE EXISTING ELEVATION AT THE UPSTREAM END OF THE GRADING TO THE DOWNSTREAM DRAINAGE STRUCTURE.
- FINAL VERTICAL ADJUSTMENT OF GUARDRAIL IF REQUIRED SHALL NOT BE PAID FOR SEPARATELY BUT INCLUDED IN THE COST OF STEEL PLATE BEAM GUARD RAIL, TYPE A.
- ANY REFERENCES OR CALL-OUTS IN THESE PLANS TO "BITUMINOUS CONCRETE" SHALL BE INTERPRETED TO MEAN "HOT-MIX ASPHALT".
- SLOPEWALL REMOVAL IS NOT TO BE PAID FOR SEPARATELY BUT INCLUDED IN THE COST OF REMOVAL OF EXISTING STRUCTURES.

COMMITMENTS

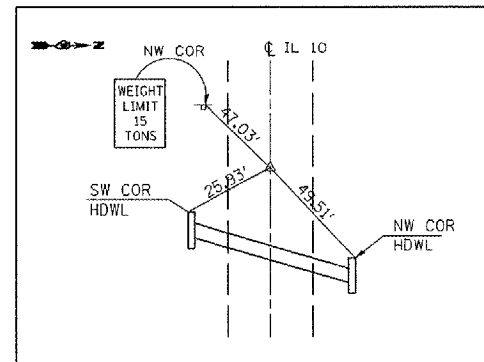
NO COMMITMENTS HAVE BEEN MADE ON THIS PROJECT.

BENCHMARKS

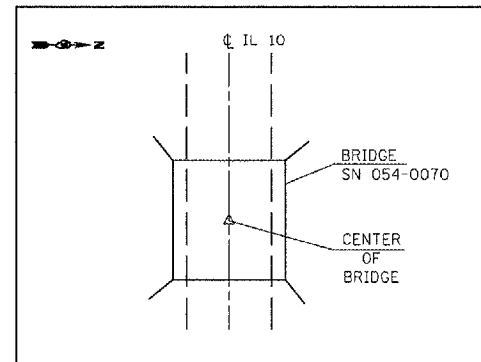
- BM #1253 - A 16 "D" NAIL IN P.P. #260 0.87 MILES EAST OF TR 3900E NAVD '88 = 533.705
- BM #1254 - A CHSLD [] IN TOP OF S.E. H.W. OF BRIDGE SN#054-0070 NAVD '88 = 529.255
- BM #1255 - A 16 "D" NAIL IN P.P. +/- 850' EAST OF BRIDGE NAVD '88 = 520.237
- BM #1256 - A 16 "D" NAIL IN BACK SIDE OF P.P. #295A STA 275+25 NAVD '88 = 542.801



P.I. 207 STA 278+10.62
SET: PK NAIL IN CHSLD "X"



P.O.T. STA 244+67.10
SET: PK NAIL IN CHSLD "X"



P.I. STA 254+75.91
STAR DRILL NAIL IN CHSLD "X"

The following mixture requirements are applicable for this project:

Mixture Use(s)	Hot-Mix Asphalt Surface Course, Mix "C", N50	Hot-Mix Asphalt Binder Course, IL-19, N50	Hot-Mix Asphalt Base Course Widening, 10"	Leveling Binder (Machine Method) Superpave, N50	Hot-Mix Asphalt Shoulders
AC/PG:	PG 64-22	PG 64-22	PG 64-22	PG 64-22	PG 58-22
RAP %: (Max)	15%	25%	25%	25%	50%
Design Air Voids:	4.0 @ Ndesign = 50	4.0 @ Ndesign = 50	4.0 @ Ndesign = 50	4.0 @ Ndesign = 50	2.0 @ Ndesign = 30
Mixture Composition: (Gradation Mixture)	IL 9.5 or 12.5	IL 19.0	IL 19.0	IL 9.5	BAM
Friction Aggregate:	MIX "C"	N/A	N/A	N/A	N/A

IDOT DISTRICT 6

EXAMINED November 29, 2006
[Signature]
OPERATIONS ENGINEER

EXAMINED Dec 11, 06
[Signature]
PROJECT IMPLEMENTATION ENGINEER

EXAMINED Dec 2, 06
[Signature]
PROGRAM DEVELOPMENT ENGINEER

REVISIONS	
NAME	DATE

ILLINOIS DEPARTMENT OF TRANSPORTATION
GENERAL NOTES
FAP 717 (IL 10)
Section: 101B-1
Logan County

SCALE: VERT. _____
HORIZ. _____
DATE _____ DRAWN BY _____
CHECKED BY _____