



F.A.P. RTE.	SECTION	COUNTY	TOTAL SHEETS	SHEET NO.
717	101B-1	LOGAN	49	10
STA. 251+80		TO STA. 257+60		
FED. ROAD DIST. NO.		ILLINOIS FED. AID PROJECT		

-  - STONE RIPRAP, CLASS A5
-  - PAVEMENT REMOVAL

- PR AGGREGATE SHOULDERS COURSE, TYPE B
- PR HOT-MIX ASPHALT SHOULDERS
- PR HOT-MIX ASPHALT BASE CSE WIDENING, 10"
- PR TRAFFIC BARRIER TERMINAL TYPE 1, SPECIAL (TANGENT) TYP

- PR BRIDGE APPROACH PAVEMENT CONNECTOR (FLEXIBLE) TYPICAL
- PR BRIDGE APPROACH PAVEMENT STD 420401 TYPICAL

- PR HOT-MIX ASPHALT SHOULDERS
- PR HOT-MIX ASPHALT BASE CSE WIDENING, 10"

- PR HOT-MIX ASPHALT SHOULDERS
- PR HOT-MIX ASPHALT BASE CSE WIDENING, 10"
- PR AGGREGATE SHOULDERS COURSE, TYPE B

- PR HOT-MIX ASPHALT SHOULDERS
- PR HOT-MIX ASPHALT BASE CSE WIDENING, 10"
- PR AGGREGATE SHOULDERS COURSE, TYPE B

SW 1/4, SEC 7, T20N, R4W, 3rd PM

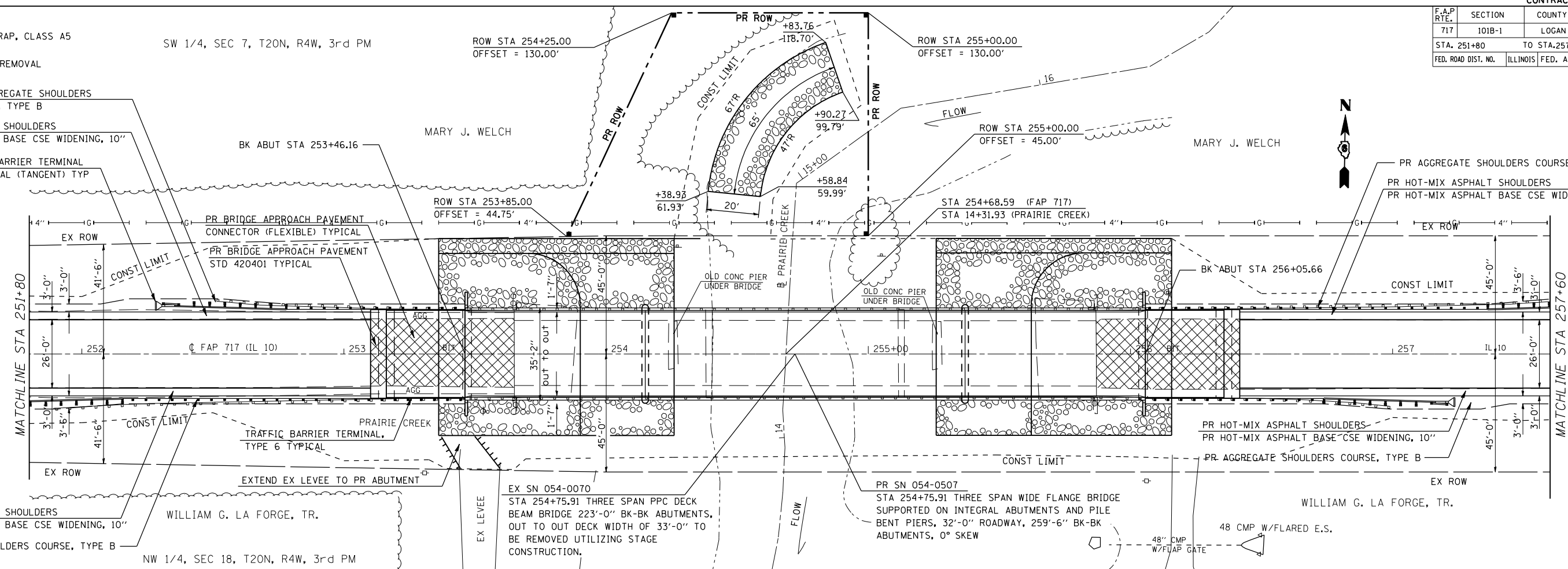
ROW STA 254+25.00  
OFFSET = 130.00'

ROW STA 255+00.00  
OFFSET = 130.00'

ROW STA 255+00.00  
OFFSET = 45.00'

MATCHLINE STA 251+80

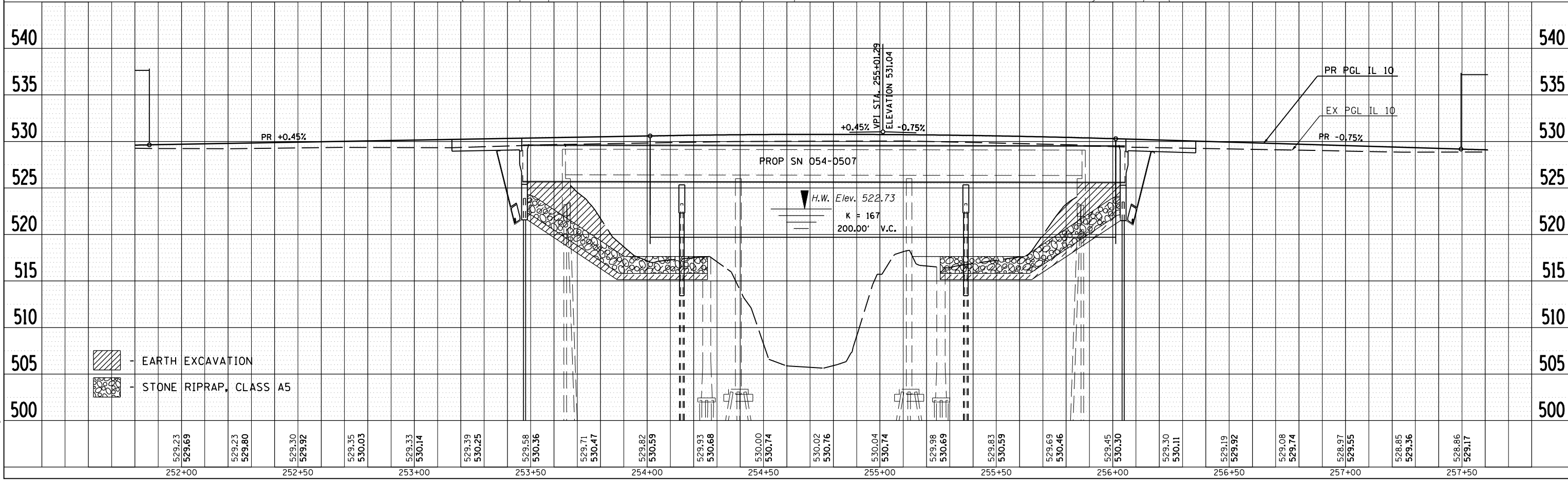
MATCHLINE STA 257+60

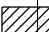



DATE	BY	REVISION

DATE	BY	REVISION

PLOT DATE = 12/12/2006  
FILE NAME = c:\p\proj\114653485\shp&p.dgn  
PLOT SCALE = 42,3529 / IN.  
USER NAME = laughlin-1



-  - EARTH EXCAVATION
-  - STONE RIPRAP, CLASS A5