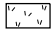

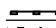
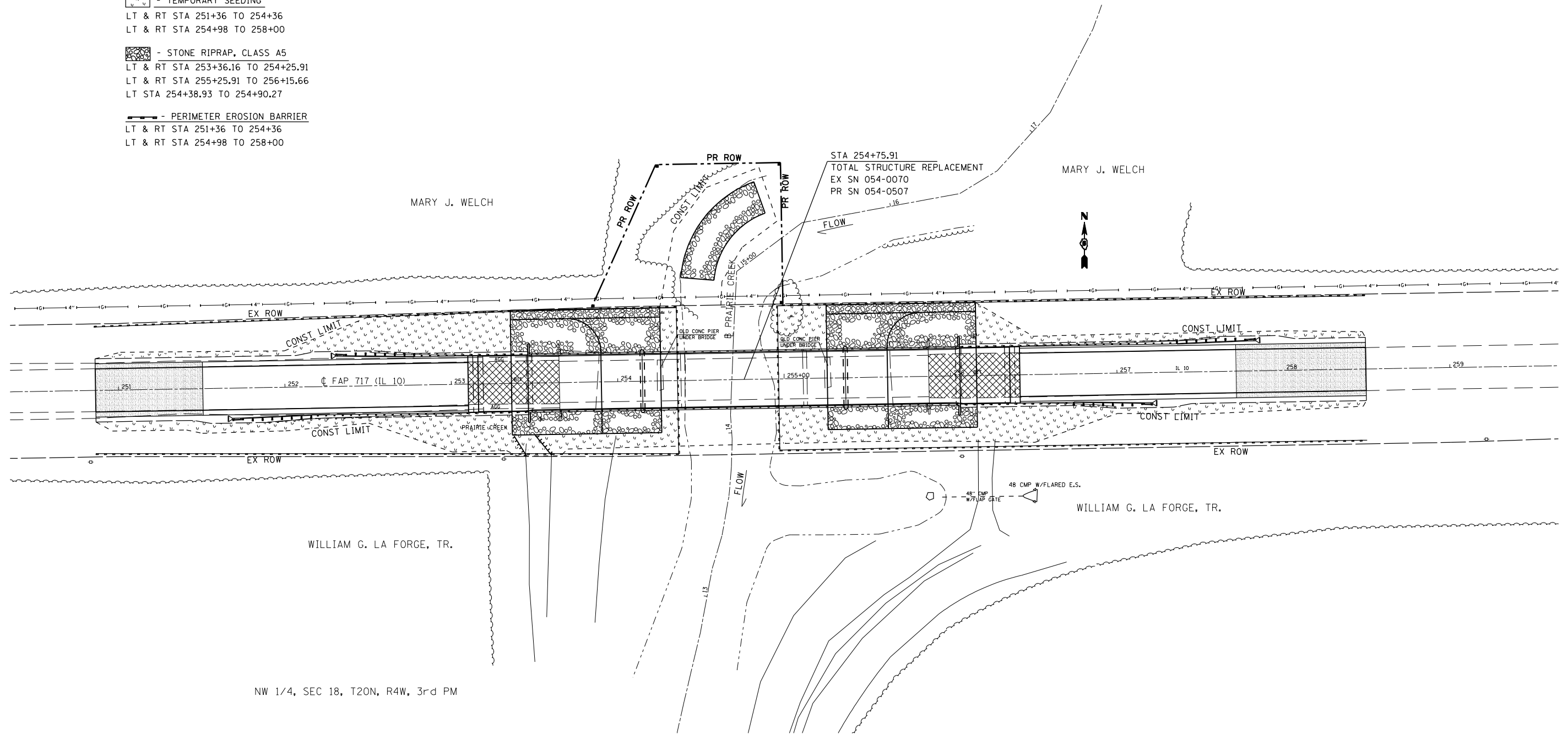


F.A.P. RTE.	SECTION	COUNTY	TOTAL SHEETS	SHEET NO.
717	101B-1	LOGAN	49	16
STA.		TO STA.		
FED. ROAD DIST. NO.	ILLINOIS	FED. AID PROJECT		

SW 1/4, SEC 7, T20N, R4W, 3rd PM

-  - TEMPORARY SEEDING
LT & RT STA 251+36 TO 254+36
LT & RT STA 254+98 TO 258+00
-  - STONE RIPRAP, CLASS A5
LT & RT STA 253+36.16 TO 254+25.91
LT & RT STA 255+25.91 TO 256+15.66
LT STA 254+38.93 TO 254+90.27
-  - PERIMETER EROSION BARRIER
LT & RT STA 251+36 TO 254+36
LT & RT STA 254+98 TO 258+00



NW 1/4, SEC 18, T20N, R4W, 3rd PM

PLOT DATE = 12/12/2006
 FILE NAME = c:\p\projects\653405\sh\erision.dgn
 PLOT SCALE = 63.5294 / IN.
 USER NAME = laughlin-1

REVISIONS	
NAME	DATE

ILLINOIS DEPARTMENT OF TRANSPORTATION
EROSION CONTROL PLAN
 FAP 717 (IL 10)
 Section: 101B-1
 Logan County
 SCALE: 1" = 30'
 DATE _____ DRAWN BY _____
 CHECKED BY _____