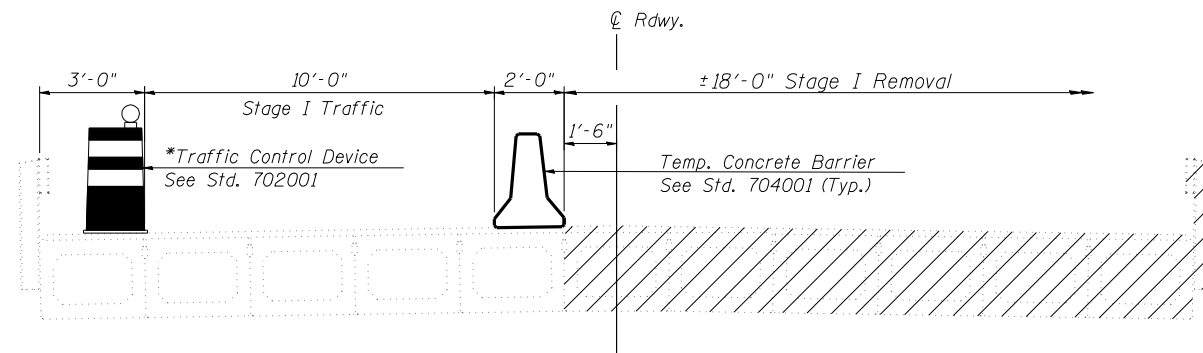


STATE OF ILLINOIS
DEPARTMENT OF TRANSPORTATION

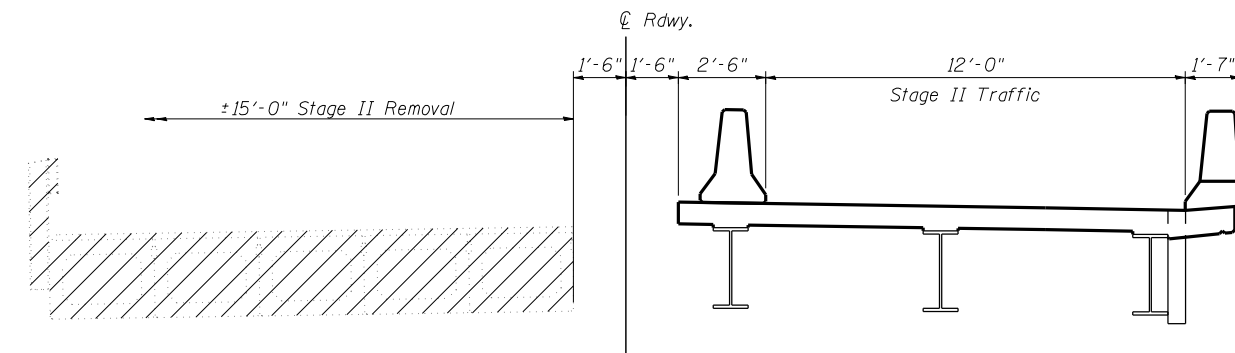
ROUTE NO.	SECTION	COUNTY	TOTAL SHEETS	SHEET NO.
F.A.P. 717	101B-1	LOGAN	49	19
FED. ROAD DIST. NO. 7	ILLINOIS	FED. AID PROJECT		

SHEET NO. 3
23 SHEETS

Contract #72A04

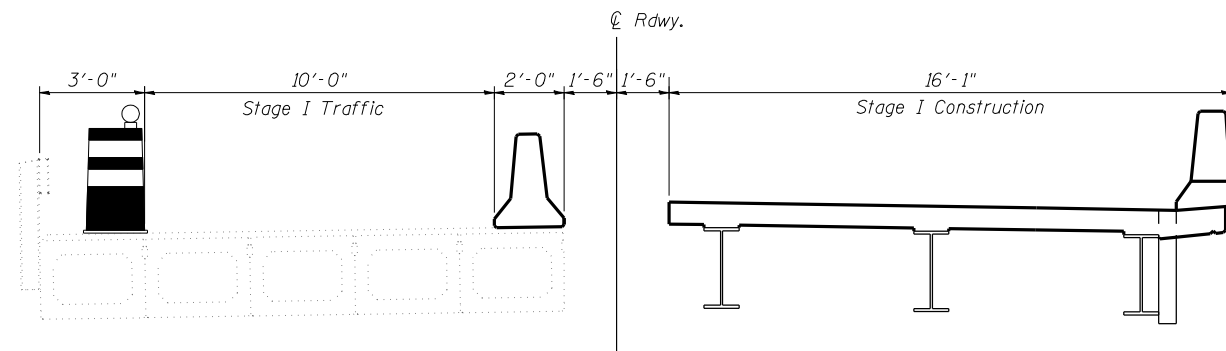


STAGE I REMOVAL

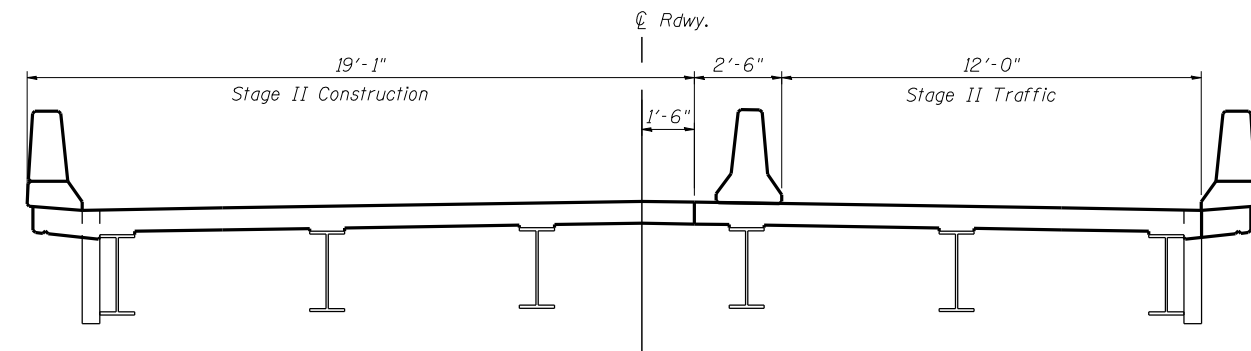


STAGE II REMOVAL

*Traffic Control Device is required to avoid wheel load contact over the north fascia beam. Device can be temporarily moved to permit wide vehicles to cross subject to approval by the Engineer. In no case should wheel loads be permitted over the north fascia beam.



STAGE I CONSTRUCTION



STAGE II CONSTRUCTION

Note:
All Cross-Sections are looking East.
Hatched area indicates "Removal of Existing Structures".
For details of Temporary Concrete Barrier, see sheet 4 of 23.
For quantity of Temporary Concrete Barrier, see Roadway Plans.

DESIGNED	D.J.T. & S.D.S.
CHECKED	J.J.P. & S.D.S.
DRAWN	L.M.G. & D.L.H.
CHECKED	D.J.T. & S.D.S.



STAGE CONSTRUCTION DETAILS
IL ROUTE 10 OVER PRAIRIE CREEK
F.A.P. ROUTE 717 - SECTION 101B-1
LOGAN COUNTY
STATION 254+75.91
STRUCTURE NO. 054-0507