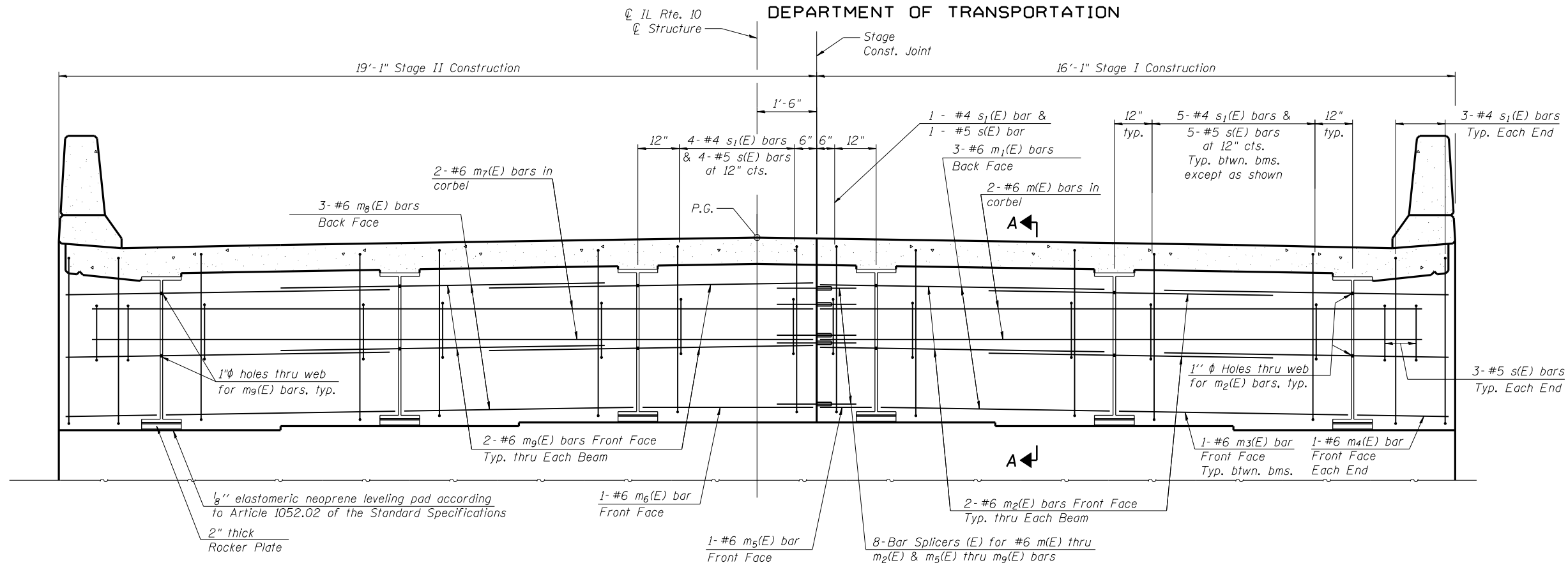


STATE OF ILLINOIS
DEPARTMENT OF TRANSPORTATION

ROUTE NO.	SECTION	COUNTY	TOTAL SHEETS	SHEET NO.	SHEET NO. 8 23 SHEETS
F.A.P. 717	101B-1	LOGAN	49	24	
FED. ROAD DIST. NO. 7		ILLINOIS	FED. AID PROJECT		

Contract #72A04

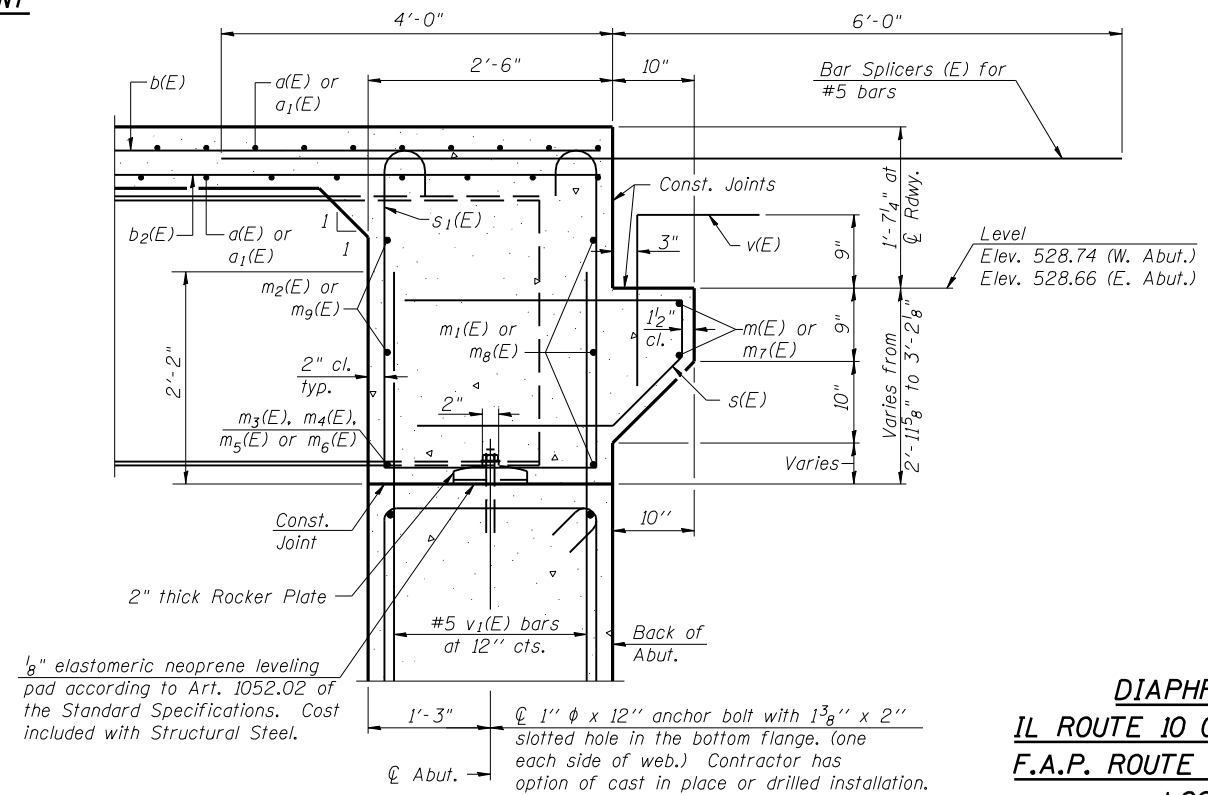


DIAPHRAGM ELEVATION AT EAST ABUTMENT

(Looking East)
(West Abutment, Looking West similar by mirror image)

Notes:
Reinforcement bars in diaphragm are billed with superstructure on sheet 9 of 23.
Concrete in diaphragm is included with Concrete Superstructure on sheet 9 of 23.
For details of bars s(E) & s₁(E) see sheet 9 of 23.
For details of bar v₁(E) see sheets 13 and 14 of 23.

MIN. BAR LAP
#6 bar = 2'-7"



SECTION A-A

DIAPHRAGM DETAILS
IL ROUTE 10 OVER PRAIRIE CREEK
F.A.P. ROUTE 717 - SECTION 101B-1
LOGAN COUNTY
STATION 254+75.91
STRUCTURE NO. 054-0507

DESIGNED	D.J.T. & S.D.S.
CHECKED	J.J.P. & S.D.S.
DRAWN	L.M.G. & D.L.H.
CHECKED	D.J.T. & S.D.S.

