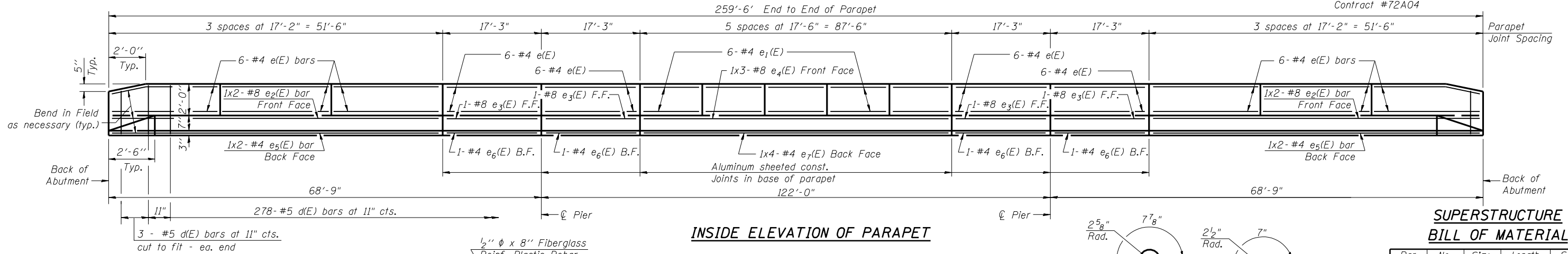


STATE OF ILLINOIS
DEPARTMENT OF TRANSPORTATION

ROUTE NO.	SECTION	COUNTY	TOTAL SHEETS	SHEET NO.	SHEET NO. 9 23 SHEETS
F.A.P. 717	101B-1	LOGAN	49	25	
FED. ROAD DIST. NO. 7	ILLINOIS	FED. AID PROJECT			

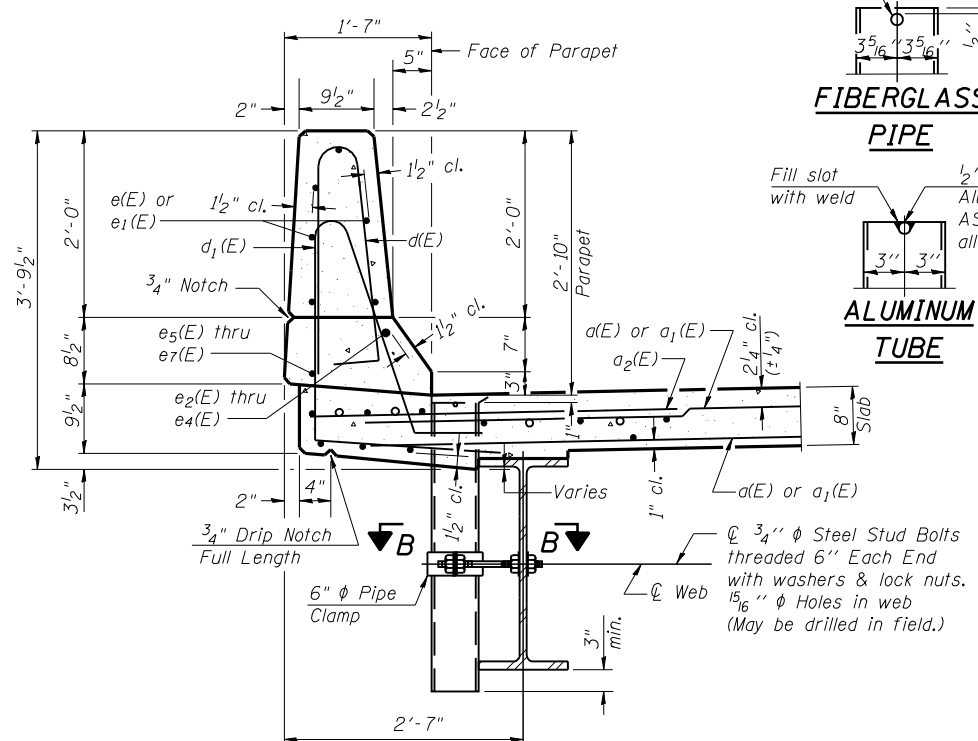
Contract #72A04



INSIDE ELEVATION OF PARAPET

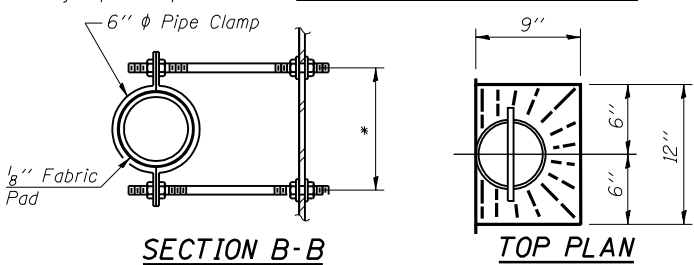
SUPERSTRUCTURE
BILL OF MATERIAL

Bar	No.	Size	Length	Shape
a(E)	658	#5	15'-5"	—
a1(E)	658	#5	18'-5"	—
a2(E)	346	#6	6'-0"	—
b(E)	380	#5	27'-5"	—
b1(E)	140	#6	30'-1"	—
b2(E)	341	#5	25'-2"	—
d(E)	568	#5	5'-7"	—
d1(E)	568	#5	7'-4"	—
e(E)	120	#4	17'-0"	—
e1(E)	60	#4	17'-3"	—
e2(E)	8	#8	27'-4"	—
e3(E)	8	#8	17'-0"	—
e4(E)	8	#8	31'-5"	—
e5(E)	8	#4	26'-4"	—
e6(E)	8	#4	17'-0"	—
e7(E)	8	#4	22'-11"	—
m(E)	4	#6	14'-11"	—
m1(E)	6	#6	15'-10"	—
m2(E)	12	#6	7'-2"	—
m3(E)	8	#6	5'-8"	—
m4(E)	4	#6	2'-3"	—
m5(E)	2	#6	1'-3"	—
m6(E)	2	#6	4'-3"	—
m7(E)	4	#6	17'-11"	—
m8(E)	6	#6	18'-10"	—
m9(E)	12	#6	8'-2"	—
s(E)	62	#5	6'-4"	—
s1(E)	62	#4	11'-4"	—
v(E)	66	#5	3'-1"	—
Reinforcement Bars, Epoxy Coated		Pound	65,620	
Concrete Superstructure		Cu. Yd.	325.9	



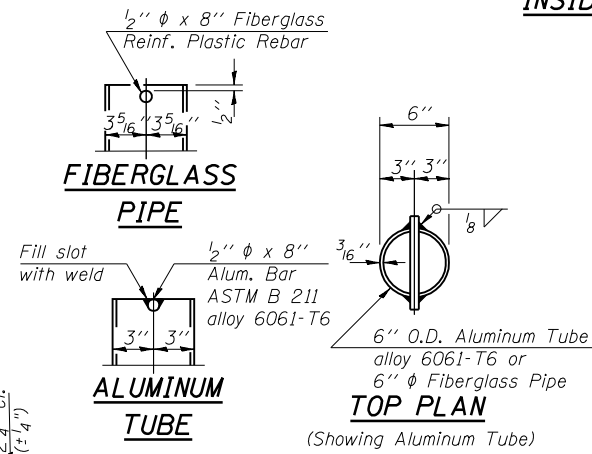
SECTION THRU PARAPET

* Dimension as required by Pipe Clamp



SECTION B-B

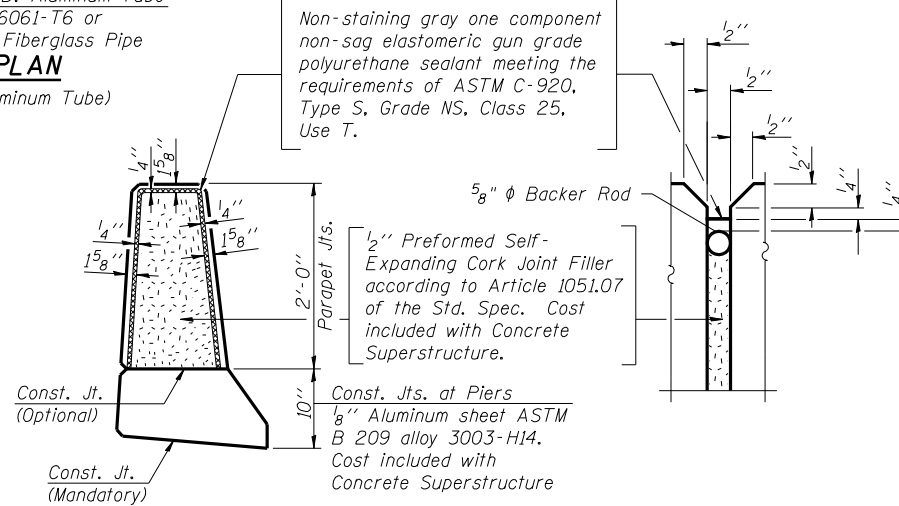
TOP PLAN



FIBERGLASS
PIPE

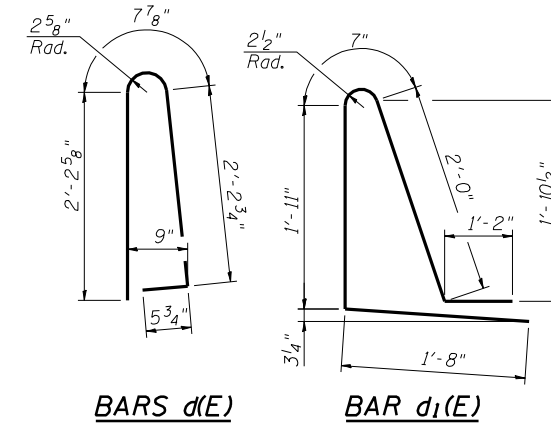
ALUMINUM
TUBE

TOP PLAN
(Showing Aluminum Tube)



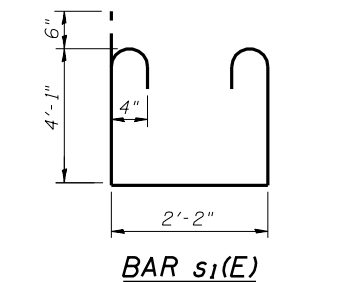
PARAPET JOINT DETAILS

Notes:
The exterior surfaces of the floor drains shall not be painted.
Fiberglass pipe shall conform to ASTM D 2996, with short-time rupture strength hoop tensile stress of 30,000 p.s.i. minimum.

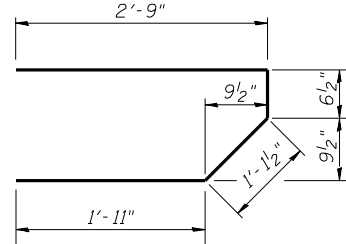


BARS d(E)

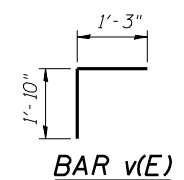
BAR d1(E)



BAR s1(E)



BAR s(E)



BAR v(E)

MINIMUM BAR LAP

#4 bar = 1'-4"
#8 bar = 3'-5"

Bars indicated thus 1 x 3-#5 etc. indicates 1 line of bars with 3 lengths per line.

DESIGNED	D.J.T. & S.D.S.
CHECKED	J.J.P. & S.D.S.
DRAWN	L.M.G. & D.L.H.
CHECKED	D.J.T. & S.D.S.

WHKS & CO.
ENGINEERS PLANNERS LAND SURVEYORS
MASON CITY, IOWA DUBUQUE, IOWA AMES, IOWA
E. DUBUQUE, ILLINOIS SPRINGFIELD, ILLINOIS ROCHESTER, MINNESOTA

SUPERSTRUCTURE DETAILS
IL ROUTE 10 OVER PRAIRIE CREEK
F.A.P. ROUTE 717 - SECTION 101B-1
LOGAN COUNTY
STATION 254+75.91
STRUCTURE NO. 054-0507