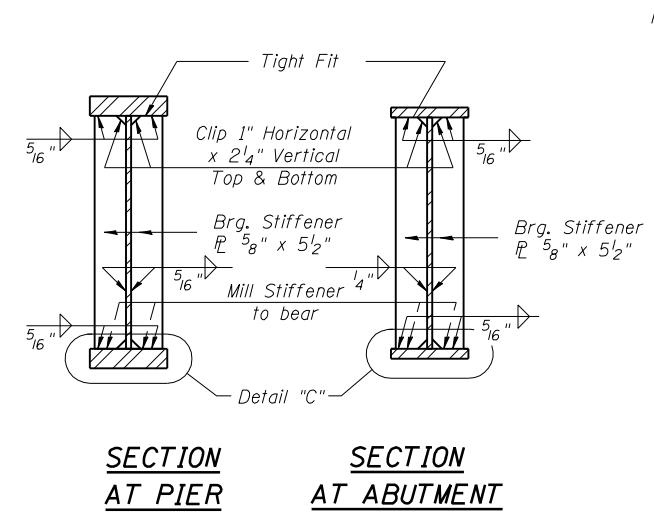
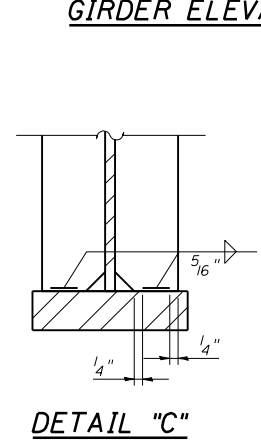
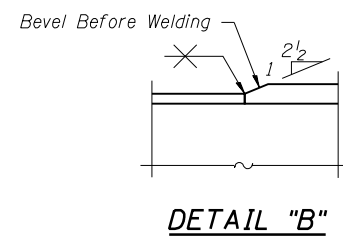
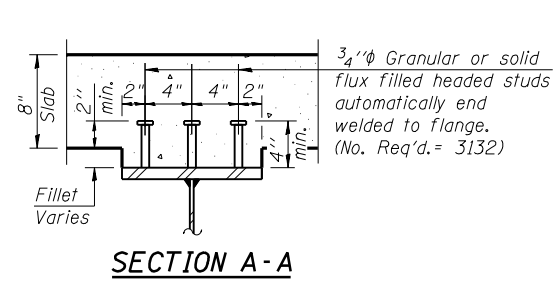
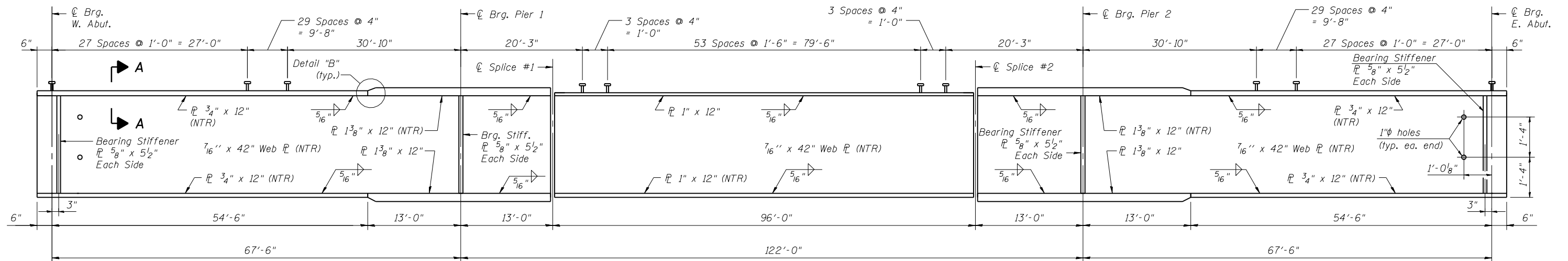
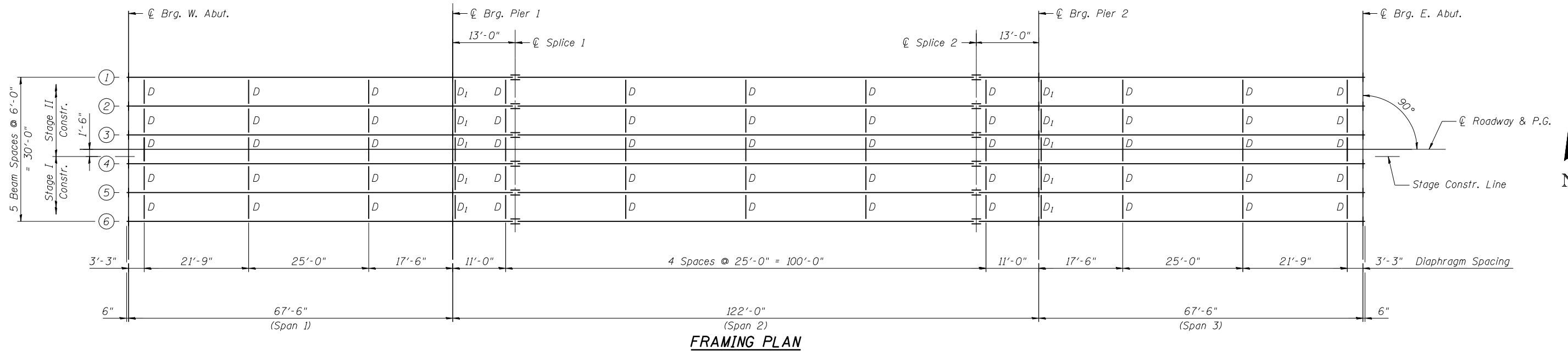


STATE OF ILLINOIS
DEPARTMENT OF TRANSPORTATION

ROUTE NO.	SECTION	COUNTY	TOTAL SHEETS	SHEET NO.	SHEET NO. 10 23 SHEETS
F.A.P. 717	101B-1	LOGAN	49	26	
FED. ROAD DIST. NO. 7	ILLINOIS	FED. AID PROJECT			

Contract #72A04



Notes: All dimensions are measured along the centerline of girder. Load carrying components designated "NTR" shall conform to the Supplemental Requirements for Notch Toughness, Zone 2. For Splice Details, Top of Web Elevations, Camber Details, Diaphragm Details and Moment & Reaction Tables see Sheet 11 of 23.

DESIGNED D.J.T. & S.D.S.
CHECKED J.J.P. & S.D.S.
DRAWN L.M.G. & D.L.H.
CHECKED D.J.T. & S.D.S.

WHKS & CO.

ENGINEERS PLANNERS LAND SURVEYORS

MASON CITY, IOWA DUBUQUE, IOWA AMES, IOWA
E. DUBUQUE, ILLINOIS SPRINGFIELD, ILLINOIS ROCHESTER, MINNESOTA

STRUCTURAL STEEL DETAILS
IL ROUTE 10 OVER PRAIRIE CREEK
F.A.P. ROUTE 717 - SECTION 101B-1
LOGAN COUNTY
STATION 254+75.91
STRUCTURE NO. 054-0507