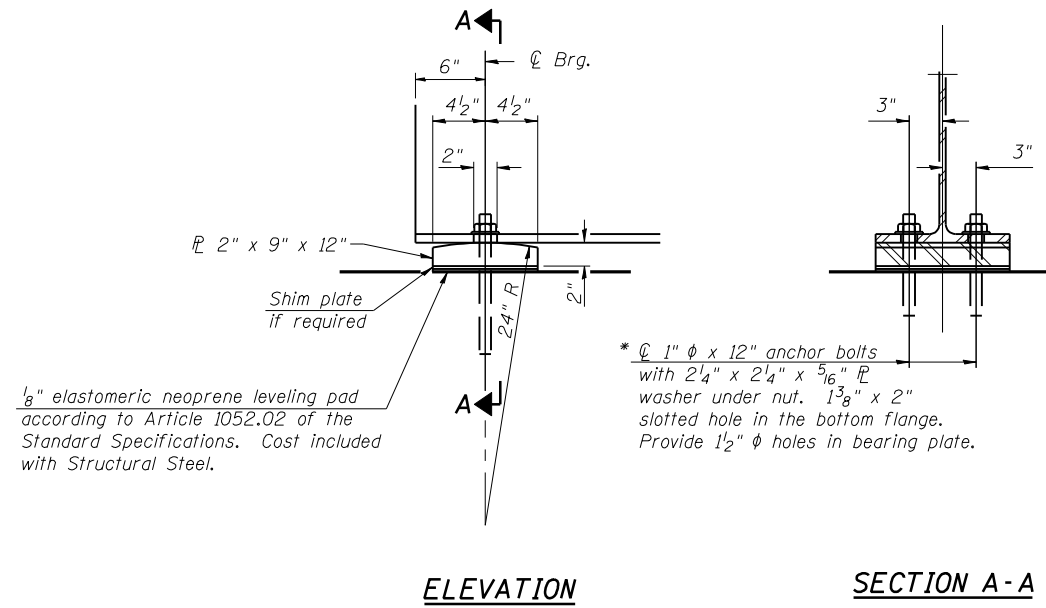


STATE OF ILLINOIS  
DEPARTMENT OF TRANSPORTATION

ROUTE NO. 717	SECTION 101B-1	COUNTY LOGAN	TOTAL SHEETS 49	SHEET NO. 28	SHEET NO. 12 23 SHEETS
F.A.P.		ILLINOIS		FED. AID PROJECT	

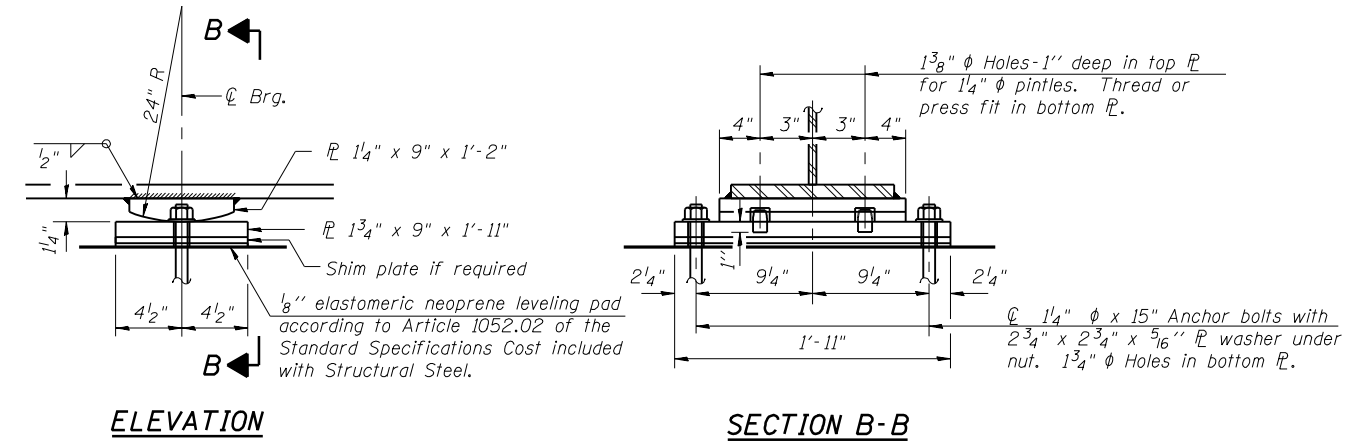
Contract #72A04

\* Prior to beginning the deck pour, the anchor bolts at the abutments shall be installed and the nuts tightened in accordance with Section 521.06. Chemical adhesive shall be allowed to properly cure according to the manufacturer's instructions before the nuts are tightened.

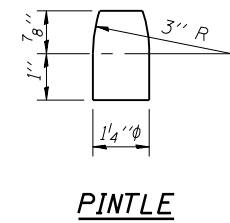


**FIXED BEARING AT ABUTMENT**

Notes:  
Anchor bolts at fixed bearings may be built into the masonry.



**FIXED BEARING AT PIER**



DESIGNED	D.J.T. & S.D.S.
CHECKED	J.J.P. & S.D.S.
DRAWN	L.M.G. & D.L.H.
CHECKED	D.J.T. & S.D.S.

**WHKS & CO.**

ENGINEERS PLANNERS LAND SURVEYORS

MASON CITY, IOWA DUBUQUE, IOWA AMES, IOWA  
E. DUBUQUE, ILLINOIS SPRINGFIELD, ILLINOIS ROCHESTER, MINNESOTA

**BEARING DETAILS**  
**IL ROUTE 10 OVER PRAIRIE CREEK**  
**F.A.P. ROUTE 717 - SECTION 101B-1**  
**LOGAN COUNTY**  
**STATION 254+75.91**  
**STRUCTURE NO. 054-0507**