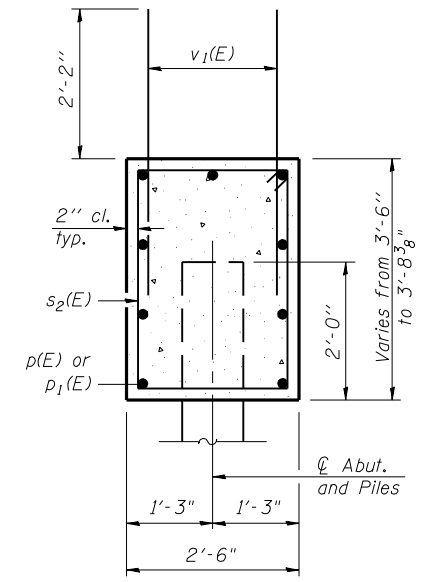
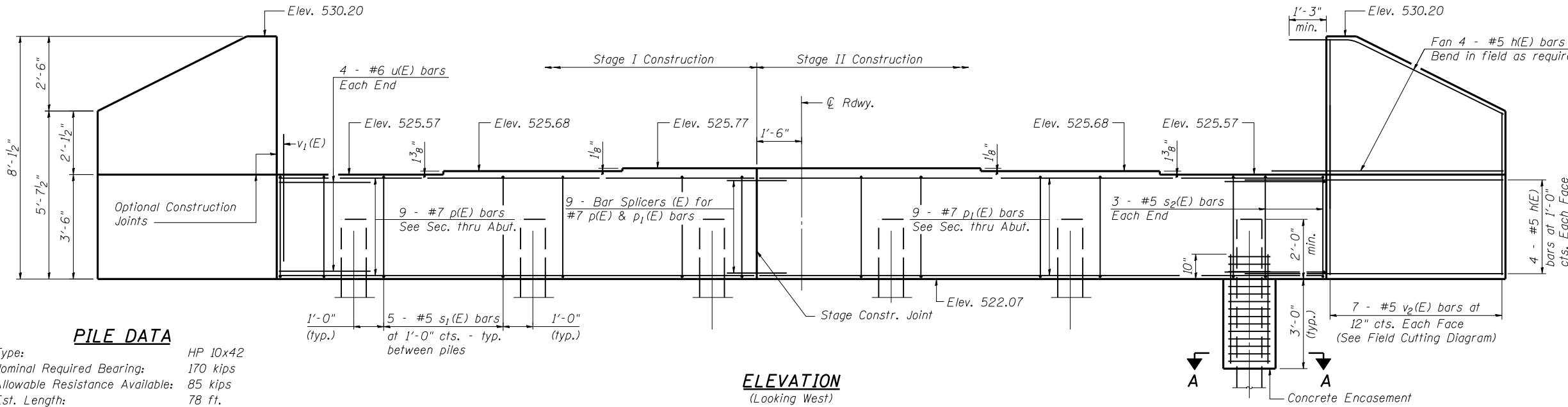


STATE OF ILLINOIS
DEPARTMENT OF TRANSPORTATION

ROUTE NO.	SECTION	COUNTY	TOTAL SHEETS	SHEET NO.	SHEET NO. 13 23 SHEETS
F.A.P. 717	101B-1	LOGAN	49	29	
FED. ROAD DIST. NO. 7	ILLINOIS	FED. AID PROJECT			

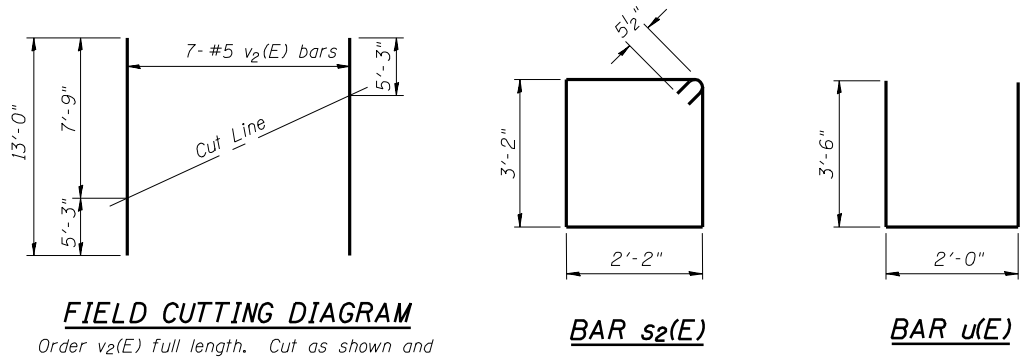
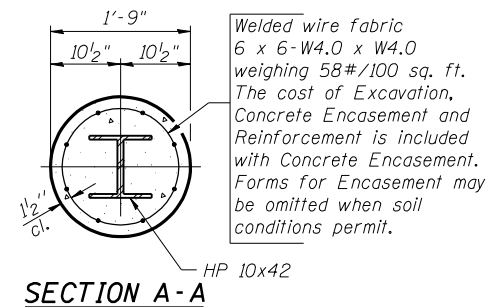
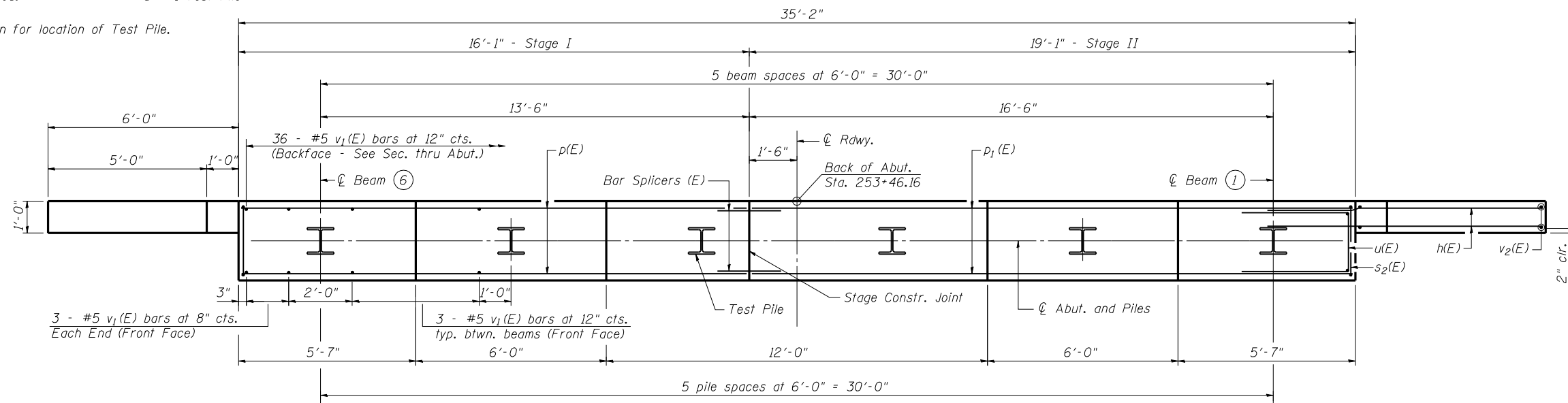
Contract #72A04



PILE DATA

Type: HP 10x42
Nominal Required Bearing: 170 kips
Allowable Resistance Available: 85 kips
Est. Length: 78 ft.
No. Required: 5 + 1 Test Pile*

* See plan for location of Test Pile.



**WEST ABUTMENT
BILL OF MATERIAL**

Bar	No.	Size	Length	Shape
h(E)	32	#5	7'-11"	—
p(E)	9	#7	15'-10"	—
p ₁ (E)	9	#7	18'-10"	—
s ₂ (E)	31	#5	11'-7"	□
u(E)	8	#6	9'-0"	—
v ₁ (E)	67	#5	4'-4"	—
v ₂ (E)	14	#5	13'-0"	—
Structure Excavation		Cu. Yd.	85	
Concrete Structures		Cu. Yd.	14.9	
Concrete Encasement		Cu. Yd.	1.6	
Reinforcement Bars, Epoxy Coated		Pound	1,880	
Furnishing Steel Piles HP10x42		Foot	390	
Driving Piles		Foot	390	
Test Piles Steel HP10x42		Each	1	

Notes:
The Steel H-piles shall be according to AASHTO M270 Grade 50.
Pour steps monolithically with cap.

**WEST ABUTMENT
IL ROUTE 10 OVER PRAIRIE CREEK
F.A.P. ROUTE 717 - SECTION 101B-1
LOGAN COUNTY
STATION 254+75.91
STRUCTURE NO. 054-0507**

DESIGNED D.J.T. & S.D.S.
CHECKED J.J.P. & S.D.S.
DRAWN L.M.G. & D.L.H.
CHECKED D.J.T. & S.D.S.

