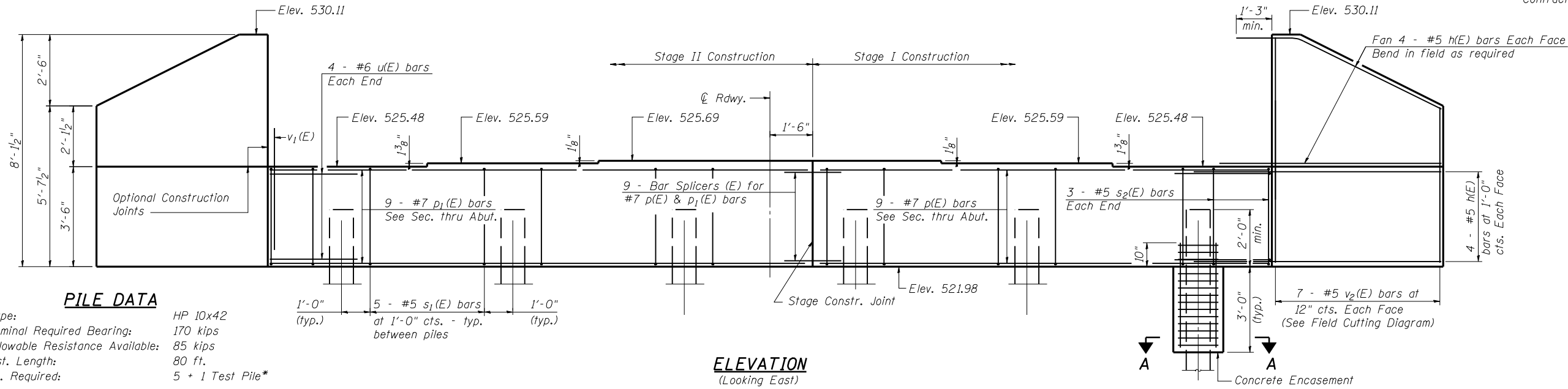


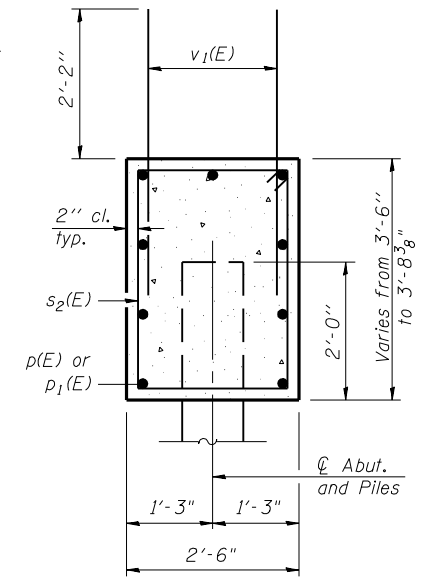
STATE OF ILLINOIS  
DEPARTMENT OF TRANSPORTATION

ROUTE NO.	SECTION	COUNTY	TOTAL SHEETS	SHEET NO.	SHEET NO. 14 23 SHEETS
F.A.P. 717	101B-1	LOGAN	49	30	
FED. ROAD DIST. NO. 7	ILLINOIS	FED. AID PROJECT			

Contract #72A04



**ELEVATION**  
(Looking East)



**SEC. THRU ABUT.**

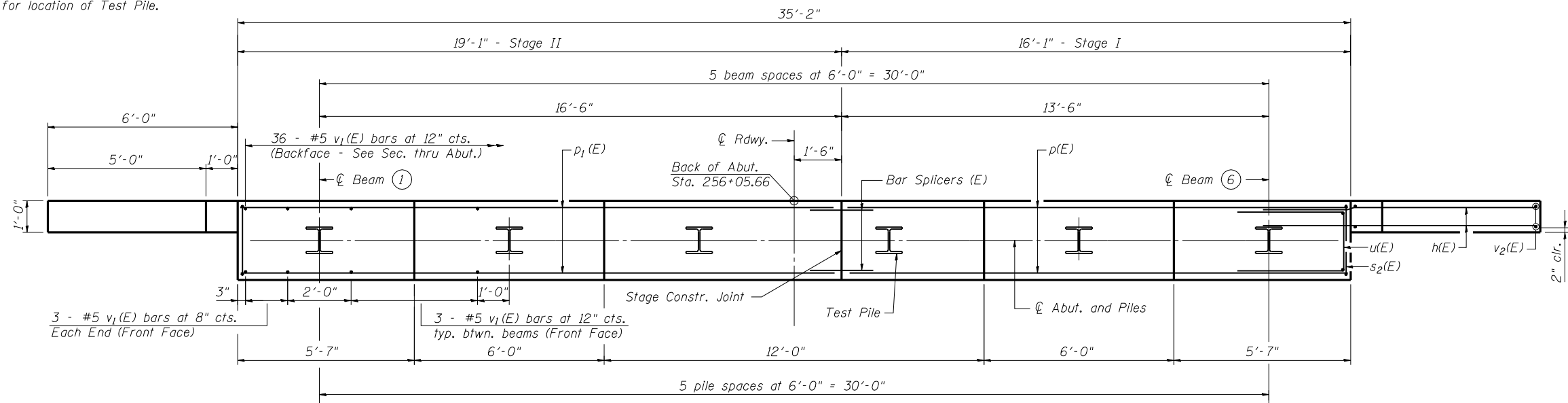
**EAST ABUTMENT  
BILL OF MATERIAL**

Bar	No.	Size	Length	Shape
h(E)	32	#5	7'-11"	—
p(E)	9	#7	15'-10"	—
p1(E)	9	#7	18'-10"	—
s2(E)	31	#5	11'-7"	□
u(E)	8	#6	9'-0"	—
v1(E)	67	#5	4'-4"	—
v2(E)	14	#5	13'-0"	—
Structure Excavation		Cu. Yd.	85	
Concrete Structures		Cu. Yd.	14.9	
Concrete Encasement		Cu. Yd.	1.6	
Reinforcement Bars, Epoxy Coated		Pound	1,880	
Furnishing Steel Piles HPI0x42		Foot	400	
Driving Piles		Foot	400	
Test Piles Steel HPI0x42		Each	1	

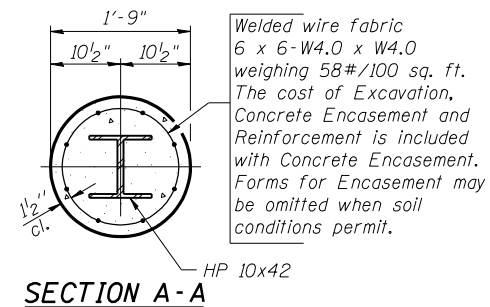
**PILE DATA**

Type: HP 10x42  
Nominal Required Bearing: 170 kips  
Allowable Resistance Available: 85 kips  
Est. Length: 80 ft.  
No. Required: 5 + 1 Test Pile\*

\* See plan for location of Test Pile.

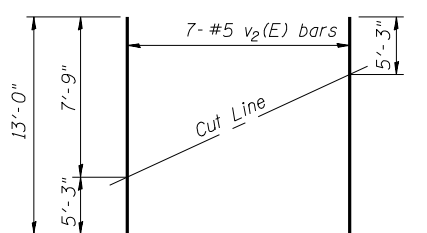


**PLAN**



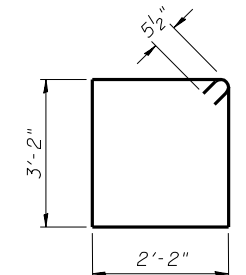
**SECTION A-A**

Notes:  
The Steel H-piles shall be according to AASHTO M270 Grade 50.  
Pour steps monolithically with cap.

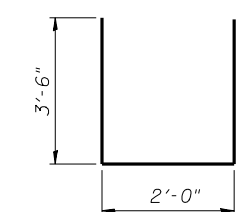


**FIELD CUTTING DIAGRAM**

Order v2(E) full length. Cut as shown and use remainder of bars in opposite face.



**BAR s2(E)**



**BAR u(E)**

DESIGNED	D.J.T. & S.D.S.
CHECKED	J.J.P. & S.D.S.
DRAWN	L.M.G. & D.L.H.
CHECKED	D.J.T. & S.D.S.

**WHKS & CO.**  
ENGINEERS PLANNERS LAND SURVEYORS  
MASON CITY, IOWA DUBUQUE, IOWA AMES, IOWA  
E. DUBUQUE, ILLINOIS SPRINGFIELD, ILLINOIS ROCHESTER, MINNESOTA

**EAST ABUTMENT  
IL ROUTE 10 OVER PRAIRIE CREEK  
F.A.P. ROUTE 717 - SECTION 101B-1  
LOGAN COUNTY  
STATION 254+75.91  
STRUCTURE NO. 054-0507**