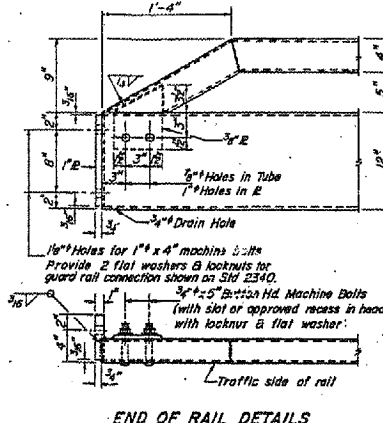
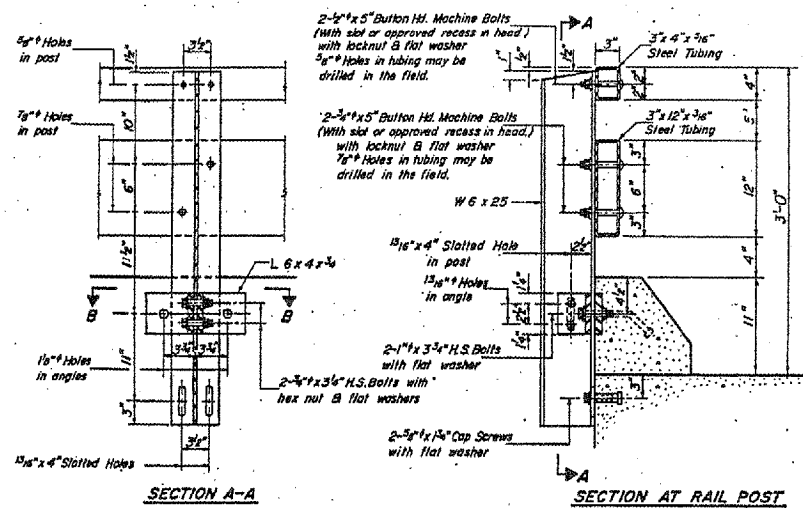
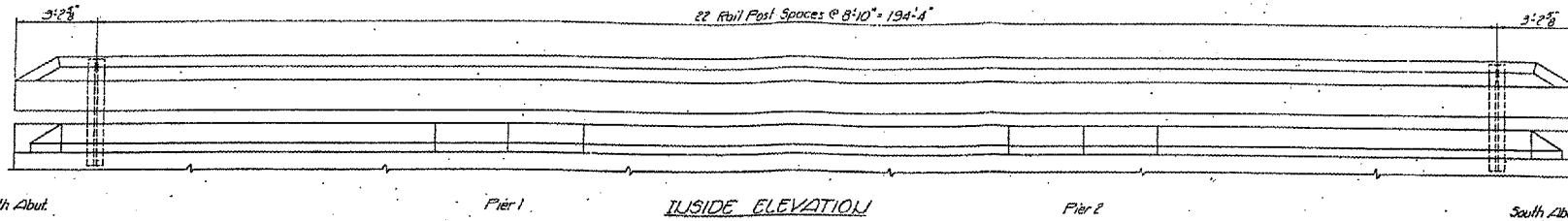


STATE OF ILLINOIS
DEPARTMENT OF TRANSPORTATION

PROJECT NO.	120	DATE	34	21	SHEET NO. 6
CONTRACT NO.	80-2	DESIGNER	HANCOCK	DATE	15 SHEETS



NOTES

Hollow structural steel tubing shall conform to the requirements of ASTM designation A-500 Grade B or A-501 Structural Steel Tubing.

All other steel shapes and plates shall conform to the requirements of AASHTO M-183 except posts and angles shall conform to AASHTO M-223, Grade 50.

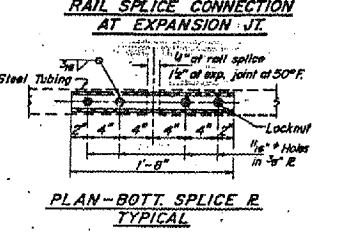
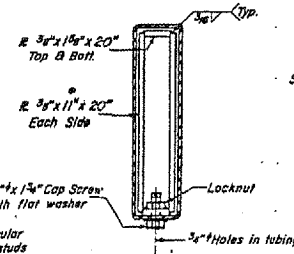
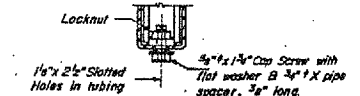
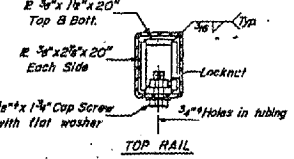
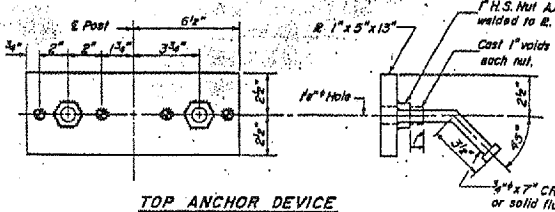
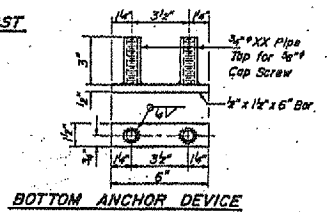
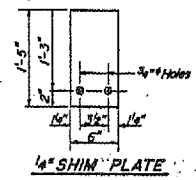
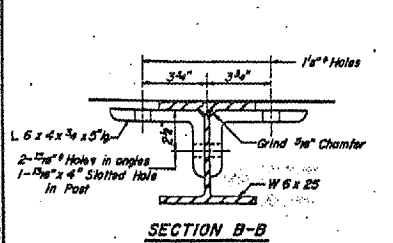
Bolts, cap screws, and nuts shall conform to the requirements of ASTM designation A-307 except for high strength bolts, nuts and washers noted which shall conform to AASHTO M-154.

Railing shall be in accordance with Section 508 of the Standard Specifications, except as noted, and shall be paid for at the contract unit price per linear foot for STEEL RAILING, TYPE T.

The lower portion of the post flange in contact with concrete shall receive two coats of asphalt paint conforming to Section 714.08 Type B or place 1/2" fabric bearing pad between the post and concrete.

The 3/4" high strength bolts used to connect the 6 x 4 x 3/4 angles to the post shall be tightened in accordance with Article 502.04(1)(3) of the Standard Specifications. The 1" high strength bolts connecting the angles to the concrete shall be tightened to a snug fit and given an additional 1/4 turn. The 2" cap screws in bottom of posts shall be tightened to a snug fit only.

For multi-span bridges, sufficient 1/2" x 5" x 1/2" steel shims shall be provided to align rail between adjacent spans. Cost incidental to Steel Railing.



CURB & RAIL BILL OF MATERIAL

Bar	No.	Size	Length	Shape
Steel Railing, Type T	Lin. Ft.	402'		

TYPE T STEEL RAILING
EA. RT. 510 SEC. 120 BR. 2
HANCOCK COUNTY
STA. 832+00.24

DESIGNED *Ralph C. Anderson*
CHECKED *Thomas S. Kunkel*
DRAWN *J.D.*
DATE *July 30 1970*

EXAMINED *[Signature]*
PASSED *[Signature]*
APPROVED *[Signature]*

R-24 4-1-70 (9'-0" Maximum Post Spacing)

SN 034-0026
EXISTING GUARDRAIL PLAN
FOR INFORMATION ONLY
(NOT TO SCALE)