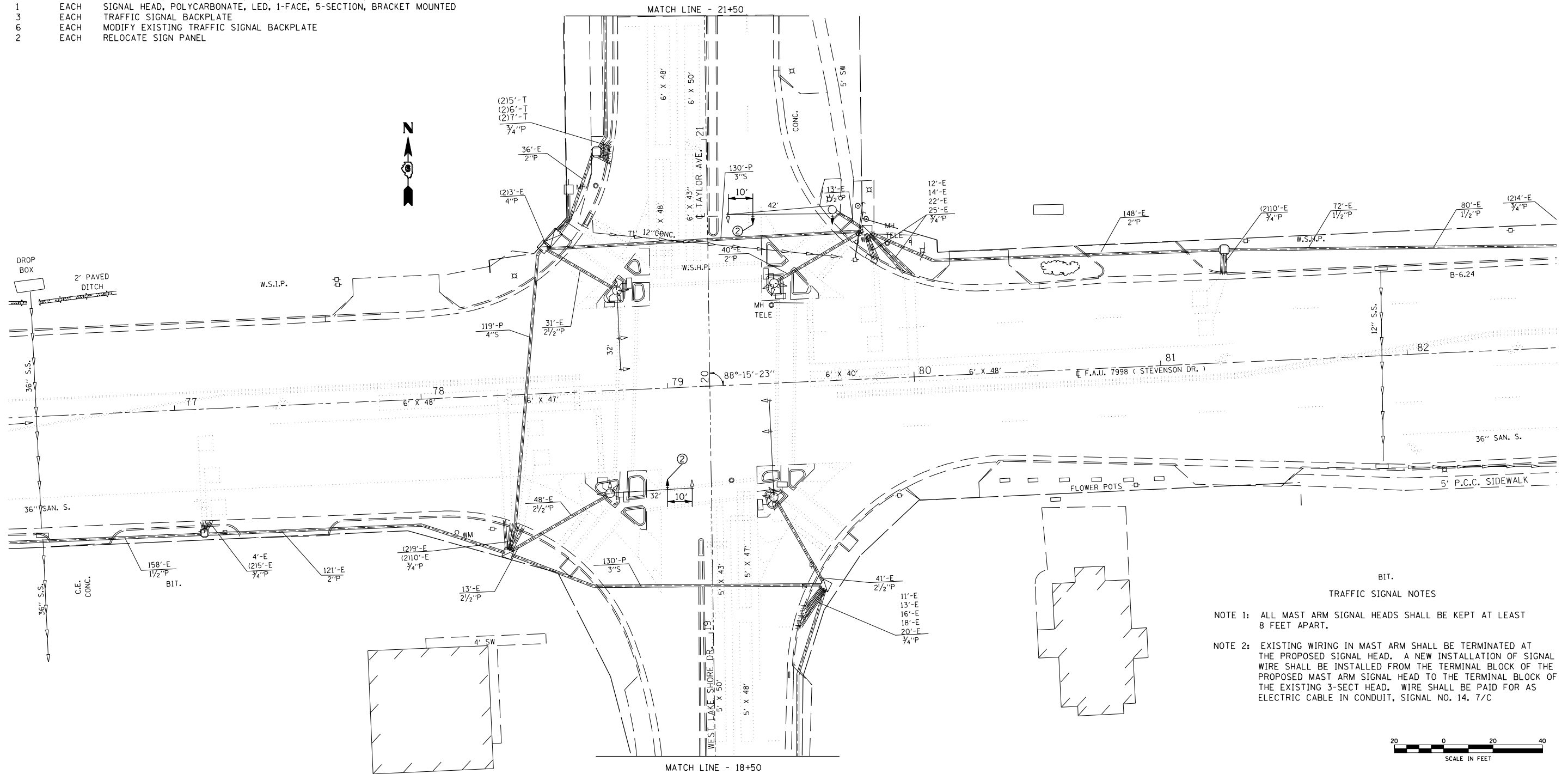


F.A. RTE.	SECTION	COUNTY	TOTAL SHEETS	SHEET NO.
*	**	SANGAMON	12	10
STA.		TO STA.		
FED. ROAD DIST. NO.	ILLINOIS	FED. AID PROJECT		
* VARIOUS				
** D-6 TRAFFIC SIGNAL MOD 2007-2				

TRAFFIC SIGNAL QUANTITIES

STEVENSON & TAYLOR

QNTY	UNIT	ITEM
220.5	FOOT	ELECTRIC CABLE IN CONDUIT, SIGNAL NO. 14, 7/C
2	EACH	SIGNAL HEAD, POLYCARBONATE, LED, 1-FACE, 3-SECTION, MAST ARM MOUNTED
1	EACH	SIGNAL HEAD, POLYCARBONATE, LED, 1-FACE, 5-SECTION, BRACKET MOUNTED
3	EACH	TRAFFIC SIGNAL BACKPLATE
6	EACH	MODIFY EXISTING TRAFFIC SIGNAL BACKPLATE
2	EACH	RELOCATE SIGN PANEL



BIT.  
TRAFFIC SIGNAL NOTES

NOTE 1: ALL MAST ARM SIGNAL HEADS SHALL BE KEPT AT LEAST 8 FEET APART.

NOTE 2: EXISTING WIRING IN MAST ARM SHALL BE TERMINATED AT THE PROPOSED SIGNAL HEAD. A NEW INSTALLATION OF SIGNAL WIRE SHALL BE INSTALLED FROM THE TERMINAL BLOCK OF THE PROPOSED MAST ARM SIGNAL HEAD TO THE TERMINAL BLOCK OF THE EXISTING 3-SECT HEAD. WIRE SHALL BE PAID FOR AS ELECTRIC CABLE IN CONDUIT, SIGNAL NO. 14, 7/C



REVISIONS	
NAME	DATE

ILLINOIS DEPARTMENT OF TRANSPORTATION  
**TRAFFIC SIGNAL PLAN**  
 FAP ROUTE 663 (STEVENSON DR.)  
 D-6 TRAFFIC SIGNAL MOD 2007-02  
 SANGAMON

SCALE: VERT. NOV '06  
 HORIZ. NOV '06  
 DRAWN BY: KDA  
 CHECKED BY:

PLOT DATE = 12/12/2006  
 FILE NAME = c:\p\projects\663706\1129\_97\ts.sheets.dgn  
 PLOT SCALE = 4.23625 / IN.  
 USER NAME = laughlinr1