

F.A.I. RTE.	SECTION	COUNTY	TOTAL SHEETS	SHEET NO.
55		SANGAMON	26	1

* - D-6 CABLE MEDIAN BAR #2

STATE OF ILLINOIS
DEPARTMENT OF TRANSPORTATION
DIVISION OF HIGHWAYS

**PROPOSED
HIGHWAY PLANS**

FAI 55 (I-55)
SECTION D-6 CABLE MEDIAN BAR #2
SANGAMON COUNTY
PROJECT # HSIP-055-3(139)102
C-96-515-07

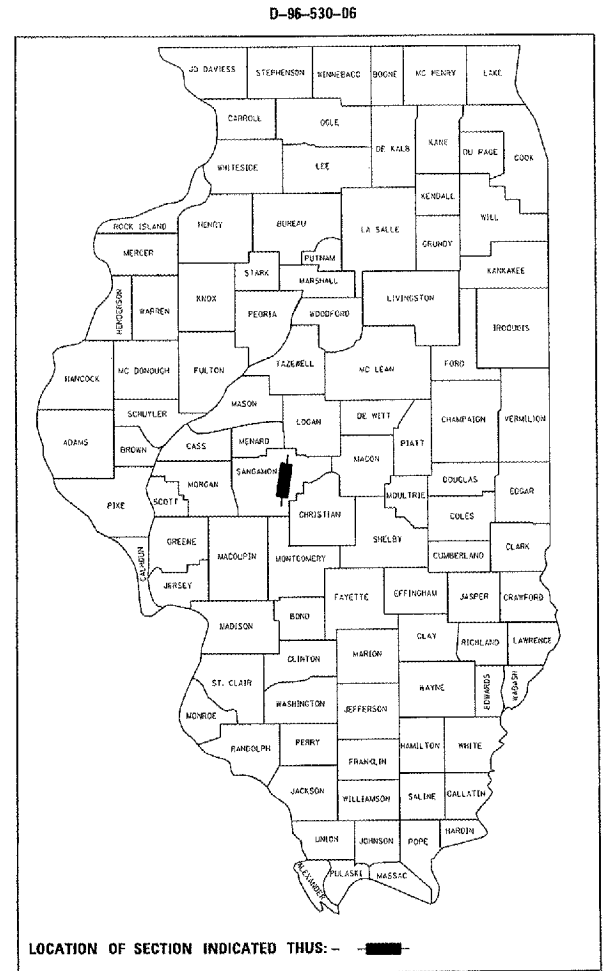
INDEX OF SHEETS

- 1 COVER SHEET
- 2 GENERAL NOTES
- 3 SUMMARY OF QUANTITIES
- 4-8 TYPICAL SECTIONS
- 9-10 SCHEDULES OF QUANTITIES
- 11-22 PLAN SHEETS
- 23 DETAILS
- 24 GRADING DETAIL
- 25 CABLE GUARD MARKER DETAIL
- 26 GIBRALTAR CABLE BARRIER DETAILS

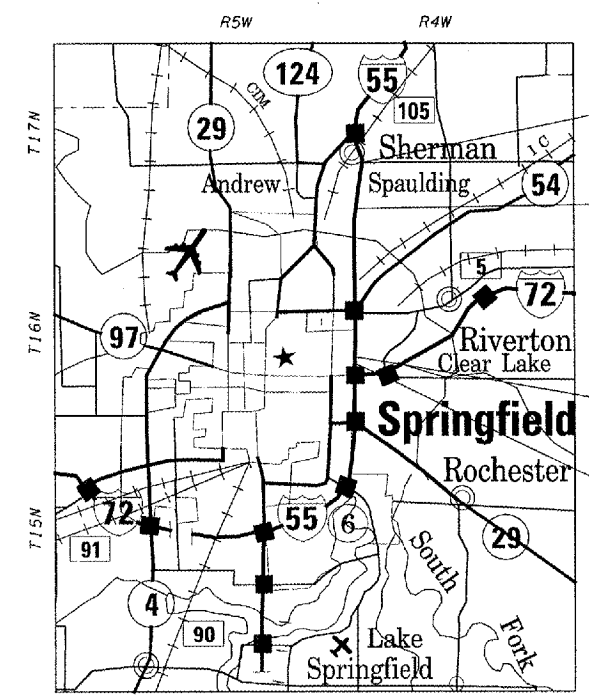
26A-26B. STORM WATER POLLUTION PREVENTION PLAN

HIGHWAY STANDARDS

000001-04	701106-01
630001-07	701400-02
635006-02	701406-04
635011-01	702001-06
701101-01	



LOCATION OF SECTION INDICATED THUS: —

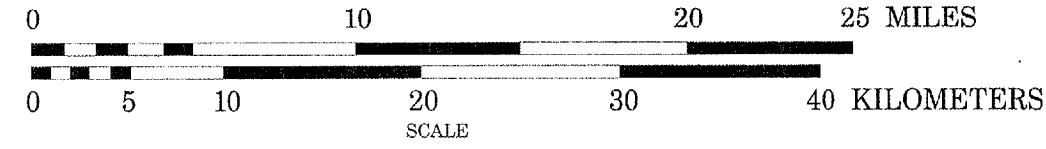


PROJECT BEGINS
STA 374+25.00

STA EON: STA 446+29.54 BK =
STA 446+39.17 AH

STA EON: STA 695+32.26 BK =
STA 355+49.48 AH

PROJECT ENDS
STA 347+81.00



GROSS LENGTH OF PROJECT = 32,866.11 FEET = 6.22 MILES
NET LENGTH OF PROJECT = 32,866.11 FEET = 6.22 MILES

ADT - 38,800

STATE OF ILLINOIS
DEPARTMENT OF TRANSPORTATION
DIVISION OF HIGHWAYS

SUBMITTED *Dec 19, 2006*

Chris M. Reed
DEPUTY DIRECTOR OF HIGHWAYS, REGION ENGINEER

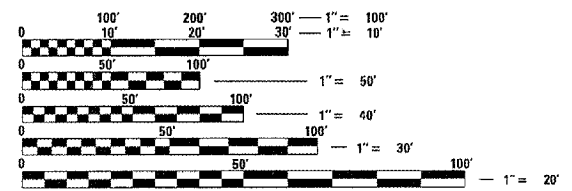
February 2, 2007
Eric E. Hain
ENGINEER OF DESIGN AND ENVIRONMENT

February 2, 2007
Matthew R. Lee, P.E.
DIRECTOR OF HIGHWAYS, CHIEF ENGINEER

**PRINTED BY THE AUTHORITY
OF THE STATE OF ILLINOIS**

Rev. 2-20-07

PROJECT ENGINEER: SAL MADONIA (217) 782-4761
SQUAD LEADER: JEFFREY P. MYERS (217) 524-7940



FULL SIZE PLANS HAVE BEEN PREPARED USING STANDARD ENGINEERING SCALES. REDUCED SIZED PLANS WILL NOT CONFORM TO STANDARD SCALES. IN MAKING MEASUREMENTS ON REDUCED PLANS, THE ABOVE SCALES MAY BE USED.

J.U.L.I.E.
JOINT UTILITY LOCATION INFORMATION FOR EXCAVATION
1-800-892-0123

CONTRACT NO. 72A56

SANGAMON COUNTY

SECTION D-6 CABLE MEDIAN BAR #2