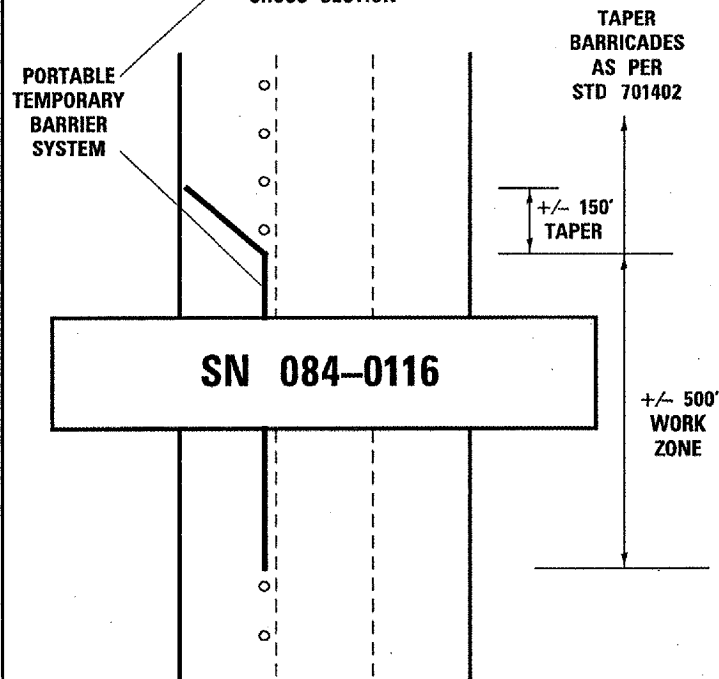
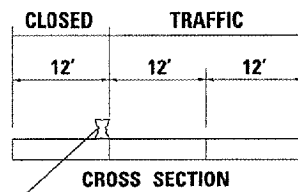
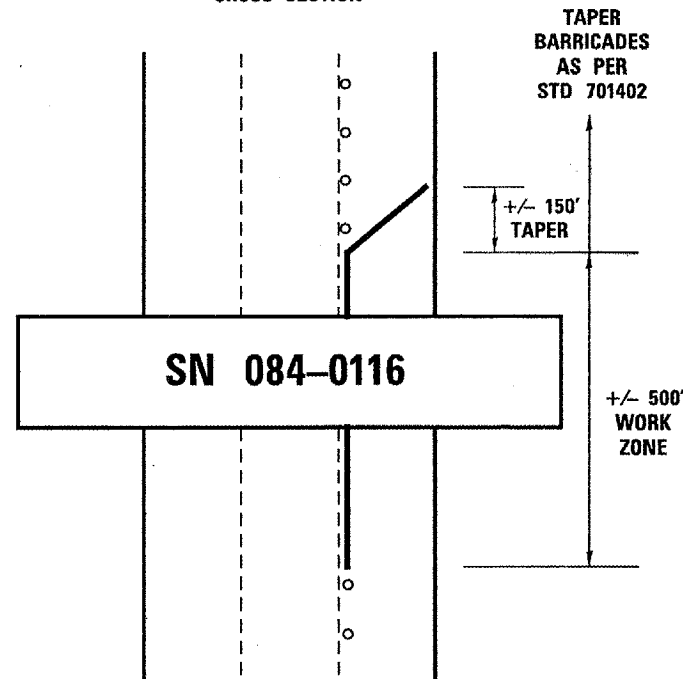
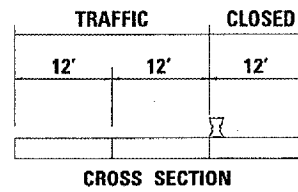




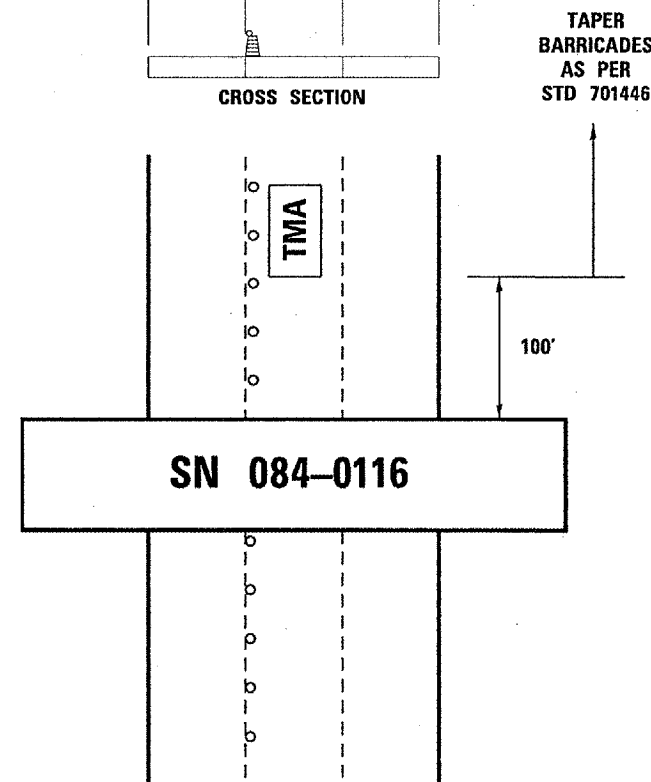
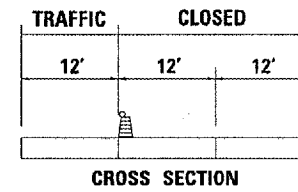
LANE CLOSURE 1



LANE CLOSURE 2



LANE CLOSURE 3



NOTES:

ONLY SOUTHBOUND LANES ARE SHOWN. NORTHBOUND LANES SHALL FOLLOW THE SAME PLAN.

WHEN WORKING IN THE CENTER LANE, THE CLOSURE SHALL CONSIST OF BARRICADES AS PER STD 701446 (SPECIAL). A TRUCK MOUNTED ATTENUATOR (TMA) SHALL BE SUPPLIED AS DETAILED IN LANE CLOSURE 3. THE CONTRACTOR SHALL INCLUDE THE COST OF THE TMA IN THE BID PRICE FOR TRAFFIC CONTROL AND PROTECTION, STD 701446 (SPECIAL).

THE CONTRACTOR MAY ELECT TO REVERSE THE ORDER OF THE LANE CLOSURES, BUT THE CENTER LANE SHALL ONLY BE CLOSED IN CONJUNCTION WITH THE ADJACENT PASSING LANE.

ALL BARRICADES, BARRICADE LIGHTING, SIGNING, ETC. SHALL BE PAID FOR UNDER STD 701402 AND STD 701446 (SPECIAL).

TANGENT LENGTHS OF THE PORTABLE TEMPORARY BARRIER SYSTEM MAY BE SHORTENED WHEN DEEMED SAFE TO DO SO BY THE ENGINEER. BARRIER SYSTEM LENGTHS MAY ONLY BE LENGTHENED WITH PRIOR APPROVAL FROM THE ENGINEER.

CONTRACT 72A70
TRAFFIC STAGING
DETAIL
(NOT TO SCALE)