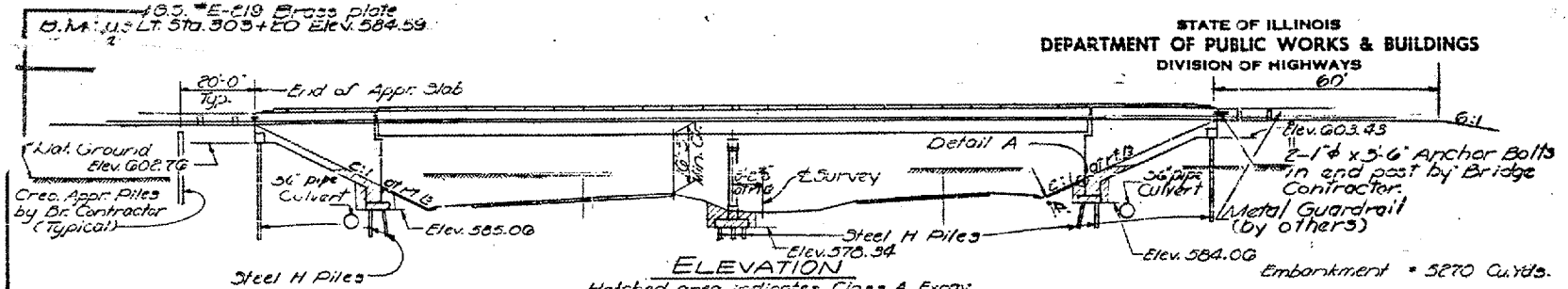


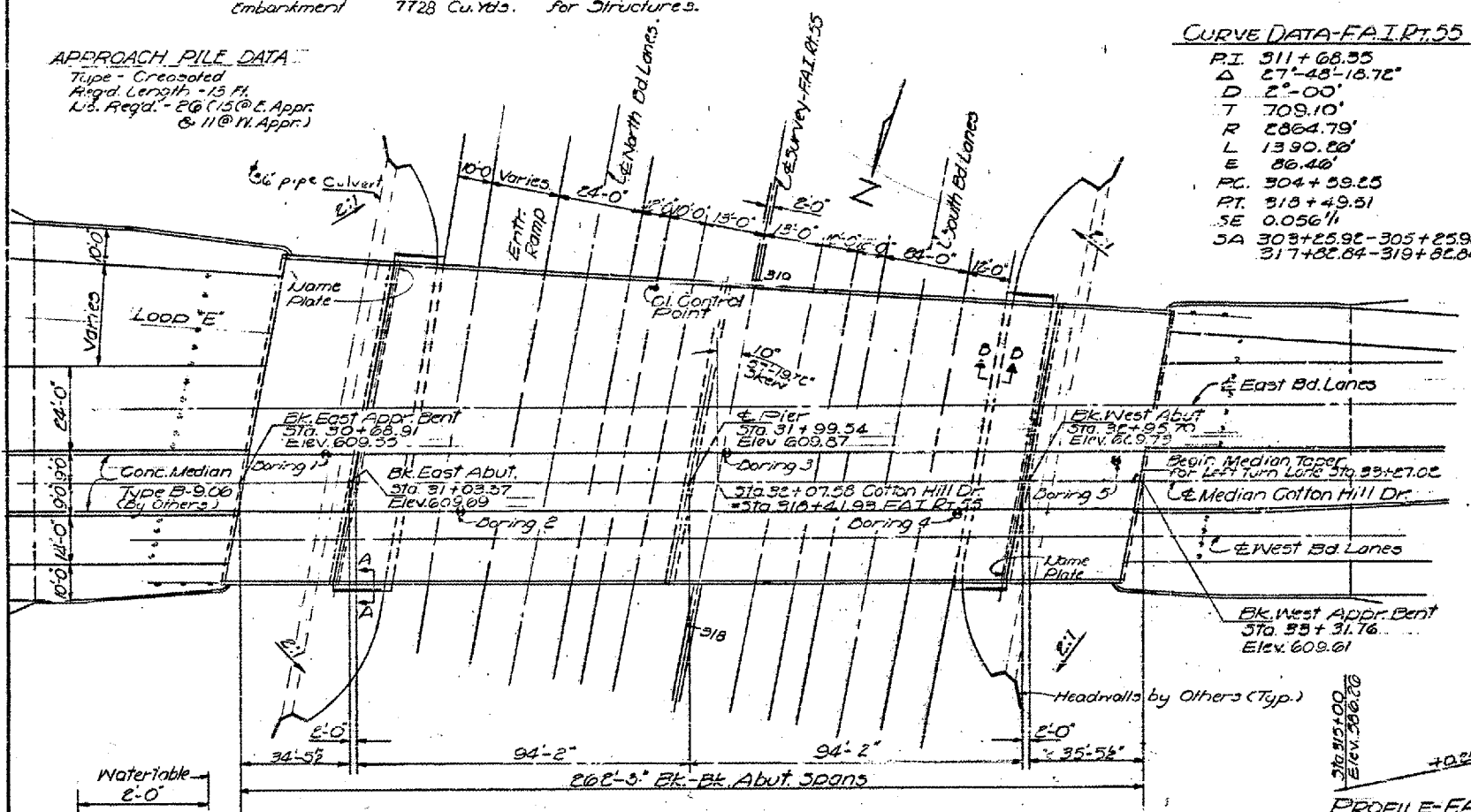
PROJECT NO.	084-0116	SHEET NO.	19
DATE	2/26/63	CONTRACT NO.	72A70
DESIGNER	Sangamon	CONTRACT DIST.	45
SCALE	AS SHOWN	CONTRACT DIST.	15



APPROACH PILE DATA
Type - Cretaceous
Height Length - 15 Ft.
Nos. Reg'd. - 26 (15 @ E. Appr. & 11 @ W. Appr.)

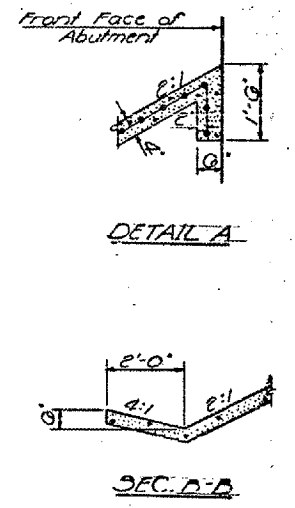
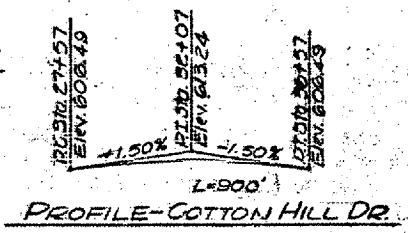
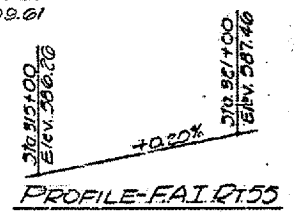
CURVE DATA-FAI RT. 55

PI 311+68.55
Δ 27°-48'-16.72"
D 2°-00'
T 709.10'
R 2864.79'
L 1390.28'
E 86.48'
PC 304+59.25
PT 318+49.51
SE 0.056 1/4
SA 308+25.92-305+25.92
317+02.84-319+82.84



CURVE DATA-COTTON HILL DR.

P.I. 29+27.71
Δ 27°-36'-46.36"
D 4°-00'
T 350.87'
R 132.40'
L 699.49'
E 43.79'
PC 22+70.04
PT 29+70.33
SE 0.08 1/4
SA 29+06.33-23+34.04
29+06.33-30+96.33



SEC. A-A

DESIGNED	J. M. Penick	EXAMINED	J. M. Penick
CHECKED	J. Kasper	PASSED	J. M. Penick
DRAWN	JAS jacobus	APPROVED	N. E. Hoff
CHECKED	L. K.		

January 15 1963

STATION 318 + 41.93
BUILT 196 BY
STATE OF ILLINOIS
F.A.I. RT. 55 SEC. 04-4-2ND
F.A. PROJ. 1-55-3(3)
LOADING H320

NAME PLATE
See Std. 2113-1

DESIGN STRESSES

$f_c = 1400$ psi - Super. & Sub
 $f_s = 20,000$ psi - Reinft.
 $f_s = 20,000$ psi - Struct.
 $V_c = 75$ psi - Ftgs.
 $n = 10$
Allowable $\leq 2/3$ Composite
LOADING H510-42

CONTRACT 72A70
SN 084-0116
EXISTING BRIDGE PLANS
FOR INFORMATION ONLY
(NOT TO SCALE)