

CONTRACT NO. 72A70

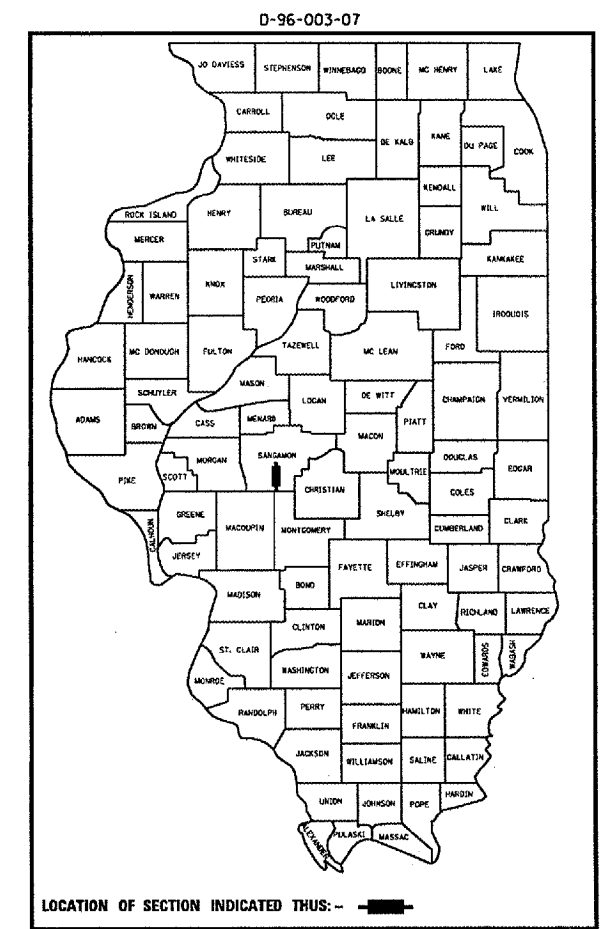
F.A.I. RTE.	SECTION	COUNTY	TOTAL SHEETS	SHEET NO.
55	D6 REHAB BR PAINTING 2007	SANGAMON	10	1

STATE OF ILLINOIS
DEPARTMENT OF TRANSPORTATION
DIVISION OF HIGHWAYS

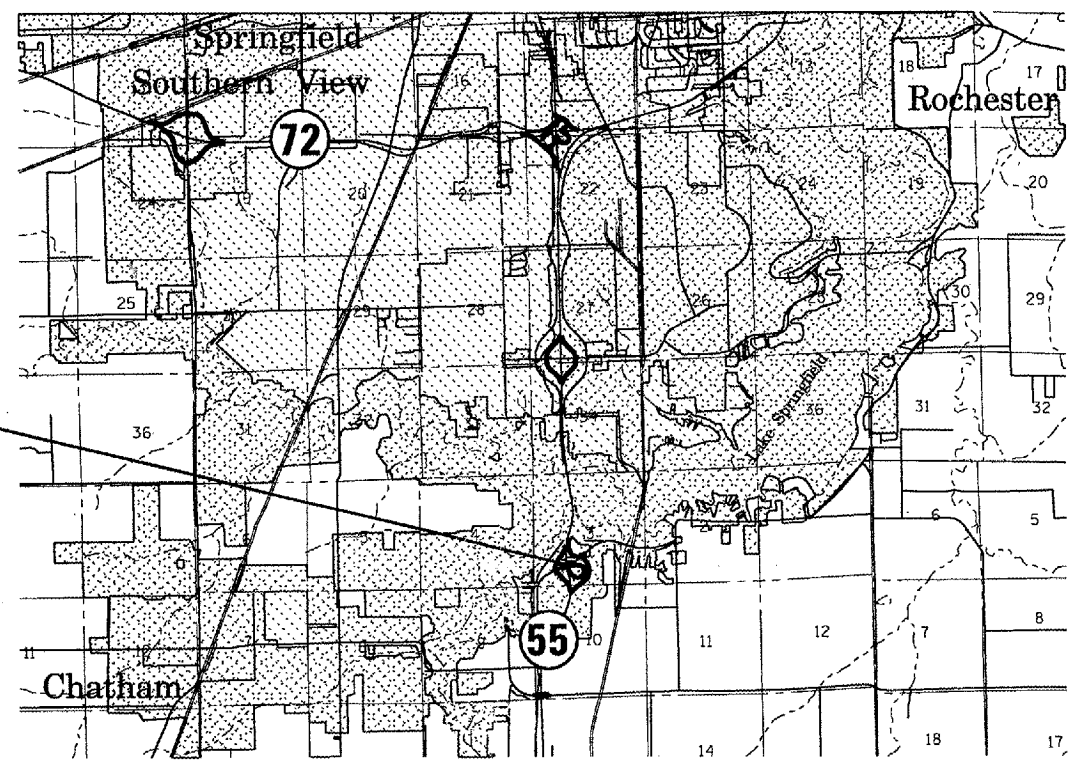
**PROPOSED
HIGHWAY PLANS**

FAI ROUTE 55
SECTION - D6 REHAB BR PAINTING 2007
PROJECT C-96-013-07
SANGAMON COUNTY

FOR INDEX OF SHEETS, SEE SHEET NO. 2



SN 084-0116



NET LENGTH OF SECTION: 188' = .04 MI

BRIDGE ENGINEER
STEVE BERAN- (217) 785-9290

BRIDGE INSPECTION ENGINEER
DAVE COPENBARGER - (217) 785-5306

J.U.L.I.E.
JOINT UTILITY LOCATION INFORMATION FOR EXCAVATION
1-800-892-0123

CONTRACT NO. 72A70

STATE OF ILLINOIS
DEPARTMENT OF TRANSPORTATION
DIVISION OF HIGHWAYS

SUBMITTED Dec 13 2006
Chas M. Reed
DEPUTY DIRECTOR OF HIGHWAYS, REGION ENGINEER

February 2, 2007
Eric E. Hearn
ENGINEER OF DESIGN AND ENVIRONMENT

February 2, 2007
Melvin R. Sees, P.E.
DIRECTOR OF HIGHWAYS, CHIEF ENGINEER

**PRINTED BY THE AUTHORITY
OF THE STATE OF ILLINOIS**

INDEX OF SHEETS

- 1 COVER SHEET
- 2 INDEX, GENERAL NOTES, & SIGNATURES
- 3 SUMMARY OF QUANTITIES
- 4 TRAFFIC STAGING DETAIL
- 5-9A. EXISTING STRUCTURE PLANS

STANDARDS

- 701101-01
- 701106-01
- 701400-02
- 701402-05
- 701411-03
- 701446
- 702001-06
- 701301-02

GENERAL NOTES

CLEANING AND PAINTING OF THE EXISTING STRUCTURAL STEEL SHALL BE AS SPECIFIED IN THE SPECIAL PROVISIONS FOR "CLEANING AND PAINTING EXISTING STEEL STRUCTURES". ALL EXISTING STEEL SHALL BE CLEANED PER NEAR WHITE BLAST CLEANING - SSPC-SP10. ALL EXISTING STEEL SHALL BE PAINTED ACCORDING TO THE REQUIREMENTS OF PAINT SYSTEM 1 - OZEU. THE COLOR OF THE FINAL FINISH COAT FOR EXTERIOR AND BOTTOM FLANGE OF THE FASCIA BEAMS SHALL BE INTERSTATE GREEN, MUNSELL NO 7.5G 48. THE COLOR OF THE FINAL FINISH COAT FOR ALL INTERIOR STEEL SURFACES SHALL BE GRAY, MUNSELL NO 5B 71.

THE SSPC-QP-1 AND SSPC-QP2 PAINTING CONTRACTOR CERTIFICATIONS WILL BE REQUIRED FOR THIS BRIDGE. ^{NOT}
THE USE OF AIR MONITORS WILL BE REQUIRED.

STATE OF ILLINOIS DEPARTMENT OF TRANSPORTATION DIVISION OF HIGHWAYS DISTRICT 6	
EXAMINED	November 21 20 06 <i>[Signature]</i> ENGINEER OF OPERATIONS
EXAMINED	Nov 22 20 06 <i>[Signature]</i> ENGINEER OF PROGRAM IMPLEMENTATION
EXAMINED	DECEMBER 6 20 06 <i>[Signature]</i> ENGINEER OF PROGRAM DEVELOPMENT

CONTRACT 72A70
INDEX, GENERAL
NOTES, & SIGNATURES

Rev.

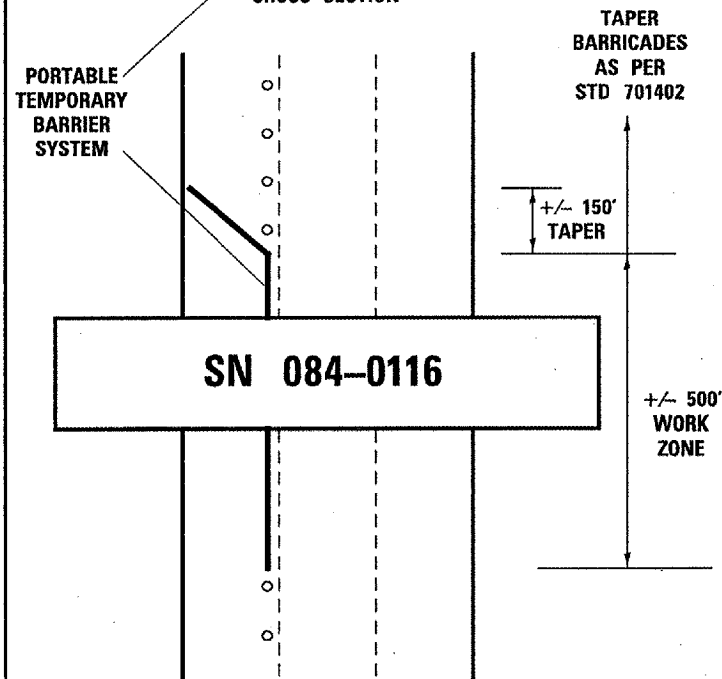
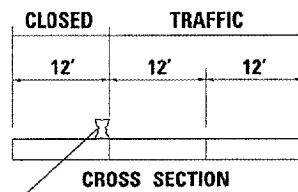
SUMMARY OF QUANTITIES				RURAL 100% STATE SANGAMON
ITEM #	DESCRIPTION	UNIT	QUANTITY	SFTY-2A
X0324401	PORTABLE TEMPORARY BARRIER SYSTEM, TEST LEVEL 3	FOOT	650	650
X7040092	RELOCATE PORTABLE TEMPORARY BARRIER SYSTEM, TEST LEVEL 3	L SUM	1	1
X7011420	TRAFFIC CONTROL AND PROTECTION, STANDARD 701411	L SUM	1	1
50600600	CLEANING AND PAINTING STEEL BRIDGE, NO. 1	L SUM	1	1
70106800	CHANGEABLE MESSAGE SIGN	CAL MO	1	1
50606400	CONTAINMENT AND DISPOSAL OF LEAD PAINT CLEANING RESIDUES	L SUM	1	1
67100100	MOBILIZATION	L SUM	1	1
70100805	TRAFFIC CONTROL AND PROTECTION, STANDARD 701402	L SUM	1	1
70100816	TRAFFIC CONTROL AND PROTECTION, STANDARD 701446 (SPECIAL)	L SUM	1	1

CONTRACT 72A70
SUMMARY OF QUANTITIES

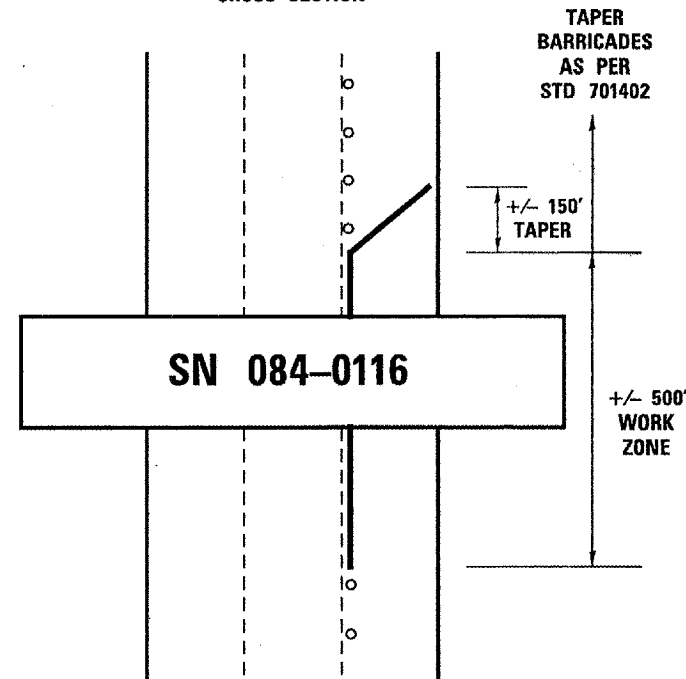
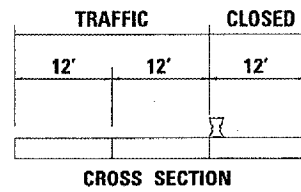
Rev.



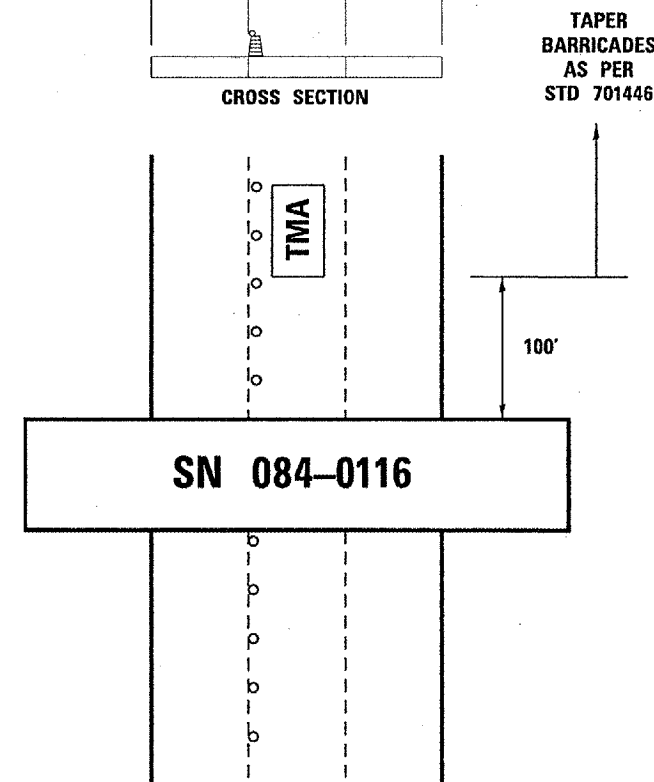
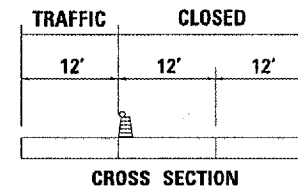
LANE CLOSURE 1



LANE CLOSURE 2



LANE CLOSURE 3



NOTES:

ONLY SOUTHBOUND LANES ARE SHOWN. NORTHBOUND LANES SHALL FOLLOW THE SAME PLAN.

WHEN WORKING IN THE CENTER LANE, THE CLOSURE SHALL CONSIST OF BARRICADES AS PER STD 701446 (SPECIAL). A TRUCK MOUNTED ATTENUATOR (TMA) SHALL BE SUPPLIED AS DETAILED IN LANE CLOSURE 3. THE CONTRACTOR SHALL INCLUDE THE COST OF THE TMA IN THE BID PRICE FOR TRAFFIC CONTROL AND PROTECTION, STD 701446 (SPECIAL).

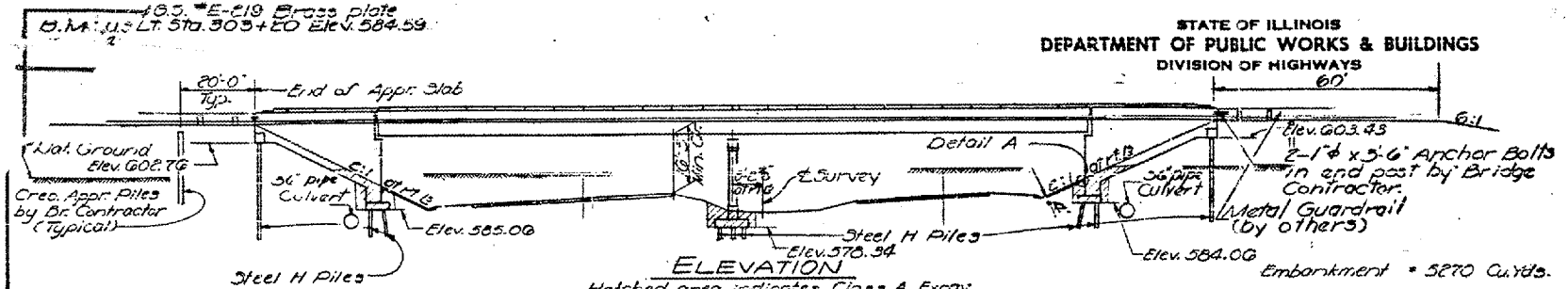
THE CONTRACTOR MAY ELECT TO REVERSE THE ORDER OF THE LANE CLOSURES, BUT THE CENTER LANE SHALL ONLY BE CLOSED IN CONJUNCTION WITH THE ADJACENT PASSING LANE.

ALL BARRICADES, BARRICADE LIGHTING, SIGNING, ETC. SHALL BE PAID FOR UNDER STD 701402 AND STD 701446 (SPECIAL).

TANGENT LENGTHS OF THE PORTABLE TEMPORARY BARRIER SYSTEM MAY BE SHORTENED WHEN DEEMED SAFE TO DO SO BY THE ENGINEER. BARRIER SYSTEM LENGTHS MAY ONLY BE LENGTHENED WITH PRIOR APPROVAL FROM THE ENGINEER.

CONTRACT 72A70
TRAFFIC STAGING
DETAIL
(NOT TO SCALE)

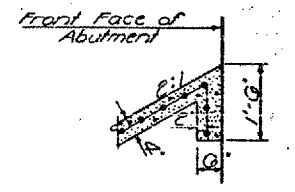
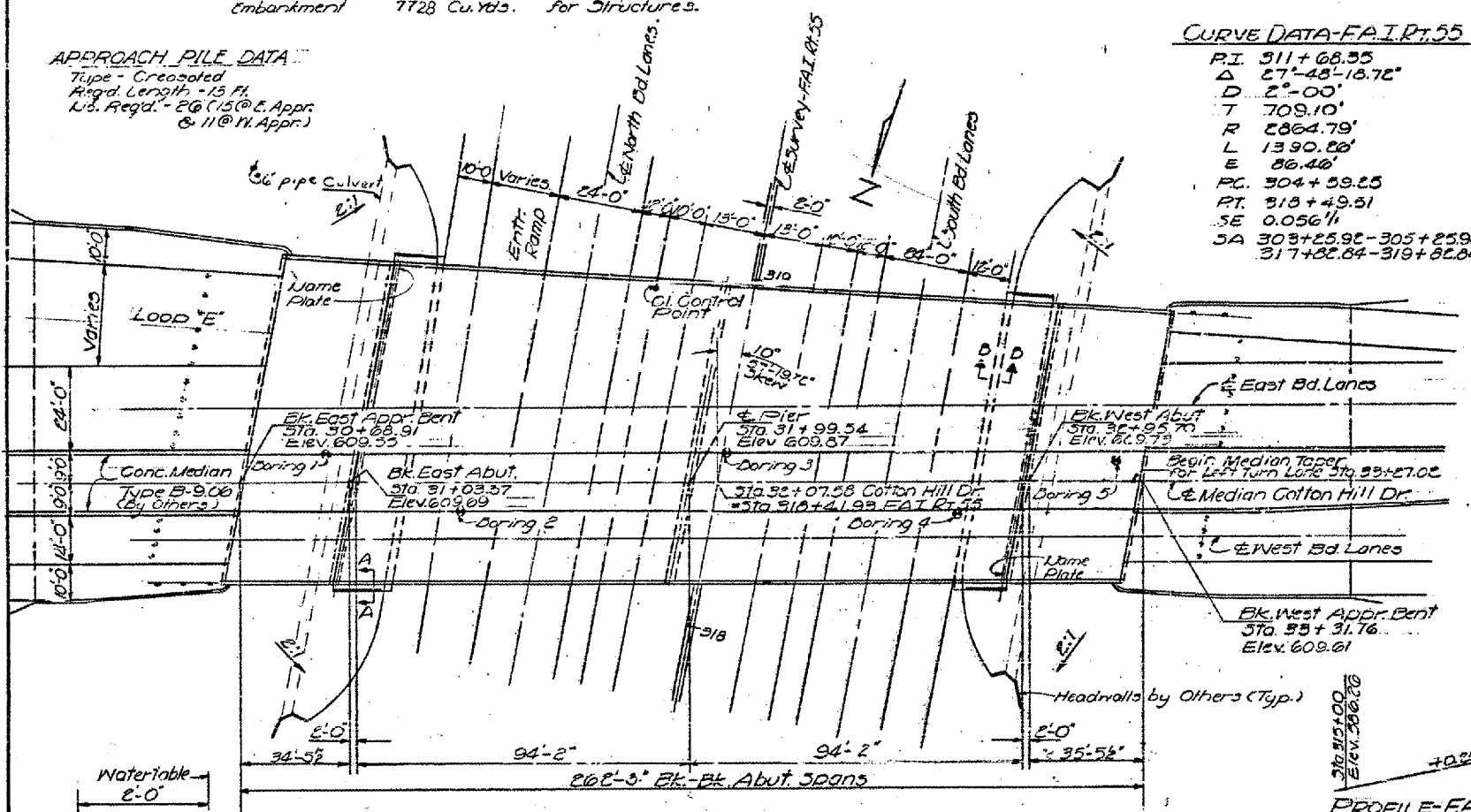
PROJECT NO.	084-0116	SHEET NO.	19
DATE	2/26/63	CONTRACT NO.	72A70
DESIGNER	Sangamon	CONTRACT DIST.	45
SCALE	AS SHOWN	CONTRACT DIST.	15



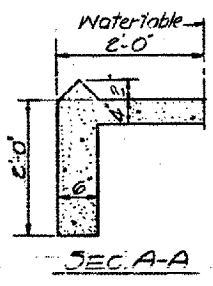
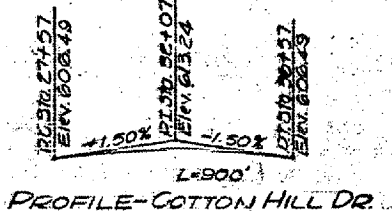
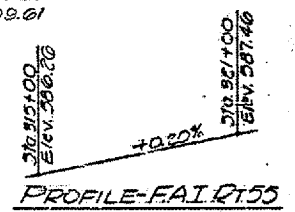
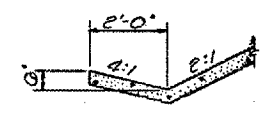
APPROACH PILE DATA
Type - Cretaceous
Height Length - 15 Ft.
Nos. Reg'd. - 26 @ E. Appr. & 11 @ W. Appr.

CURVE DATA-FAI RT. 55
P.I. 311+68.55
Δ 27°-48'-16.72"
D 2°-00'
T 709.10'
R 2864.79'
L 1390.28'
E 86.48'
P.C. 304+59.25
P.T. 318+49.51
S.E. 0.056 1/4
S.A. 303+25.92-305+25.92
317+02.84-319+82.84

CURVE DATA-COTTON HILL DR.
P.I. 29+27.71
Δ 27°-36'-46.56"
D 4°-00'
T 350.87'
R 132.40'
L 699.49'
E 43.79'
P.C. 22+70.04
P.T. 29+70.33
S.E. 0.08 1/4
S.A. 21+42.84-23+34.04
29+06.33-30+96.33



DETAIL A



STATION 318+41.93
BUILT 196 BY
STATE OF ILLINOIS
F.A.I. RT. 55 SEC. 04-4-2ND
F.A. PROJ. 1-55-3(3)
LOADING H320

NAME PLATE
See Std. 2113-1

DESIGNED	J. M. Penick	EXAMINED	J. M. Penick
CHECKED	J. Kasper	PASSED	J. M. Penick
DRAWN	JAS jacobus	APPROVED	N. E. Hoff
CHECKED	L. K.		

DESIGN STRESSES
F_c = 1400 psi - Super. & Sub
F_s = 20,000 psi - Reinft.
F_s = 20,000 psi - Struct.
V_c = 75 psi - Ftgs.
D=10
Allowable 1/2 1200 Composite
LOADING H510-42

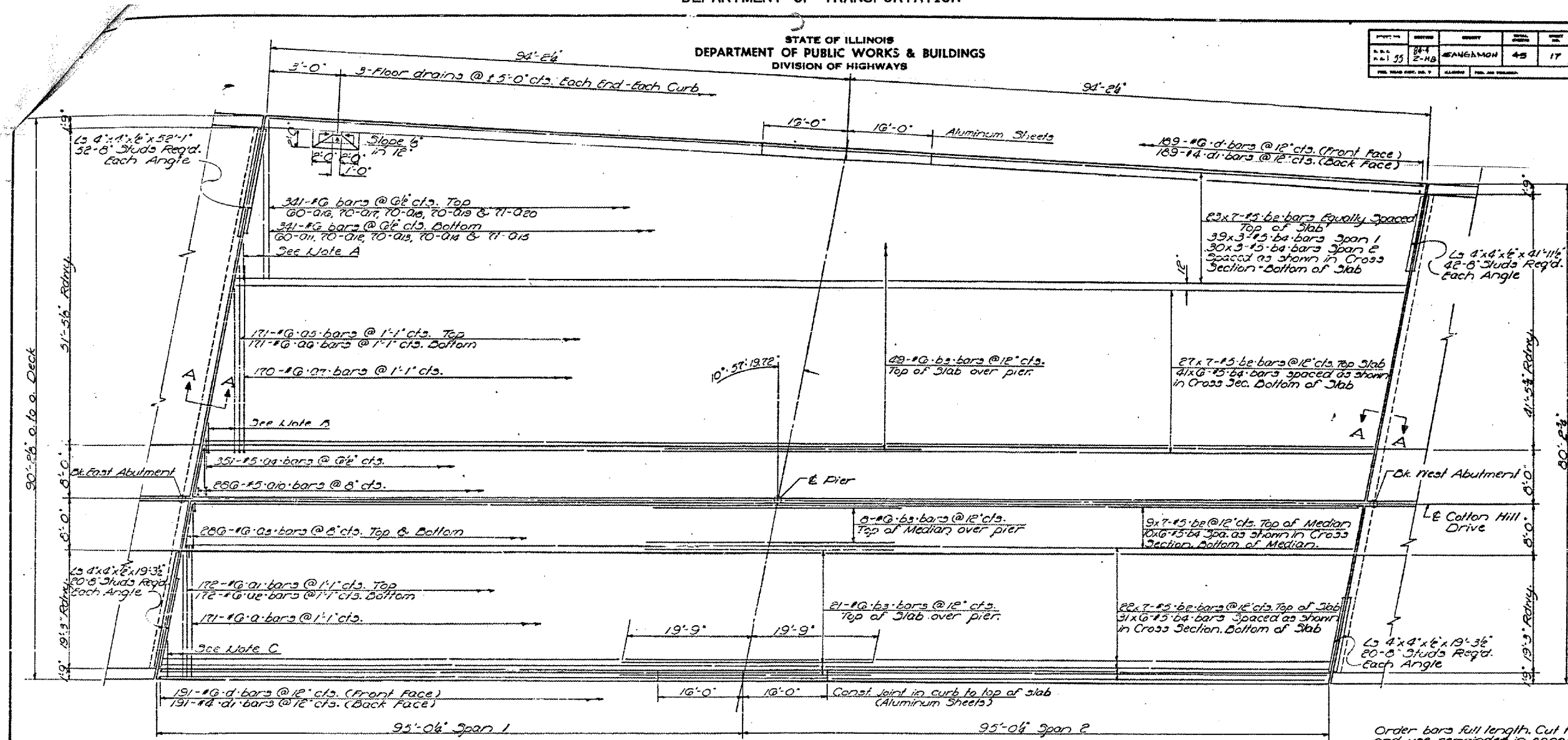
CONTRACT 72A70
SN 084-0116
EXISTING BRIDGE PLANS
FOR INFORMATION ONLY
(NOT TO SCALE)

STATE OF ILLINOIS
DEPARTMENT OF TRANSPORTATION

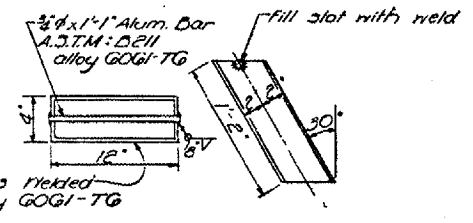
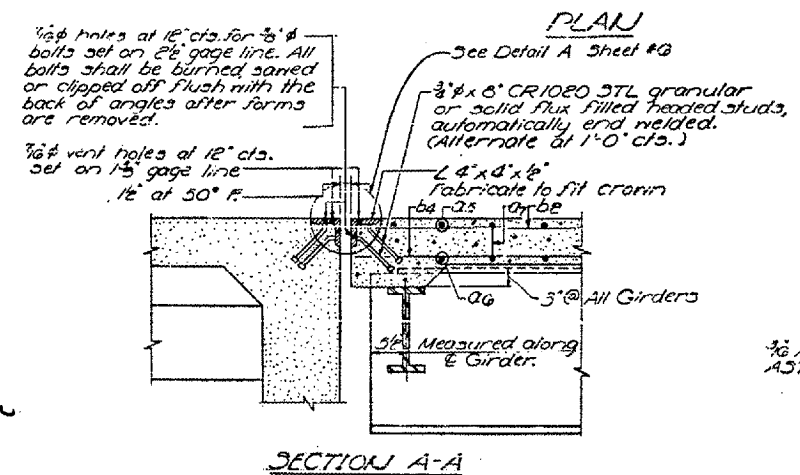
SHEET 60F 9

STATE OF ILLINOIS
DEPARTMENT OF PUBLIC WORKS & BUILDINGS
DIVISION OF HIGHWAYS

PROJECT NO.	DATE	DESIGNER	SCALE	SHEET NO.
101-115	2-14-48	HEAVENBROW	45	17
TOTAL SHEETS				19



95.02
45.02
19.02
69.02
25.02



Order bars full length. Cut to fit skew and use remainder in opposite end.
 Note A: 10-#6-01 bars @ 6" cts. Top
 10-#6-01 bars @ 6" cts. Bottom
 Note B: 10-#6-05 bars @ 6" cts. Top
 10-#6-05 bars @ 6" cts. Bottom
 Note C: 8-#6-01 bars @ 6" cts. Top
 8-#6-05 bars @ 6" cts. Bottom
 Bars indicated thus 20x3-#5 etc. indicates 20 lines of bars with 3 lengths per line.

DESIGNED	J. H. Pence	EXAMINED	JAN 15 1948
CHECKED	I. Kasper	PASSED	[Signature]
DRAWN	JACOBS JP	APPROVED	[Signature]
CHECKED	I. K.		

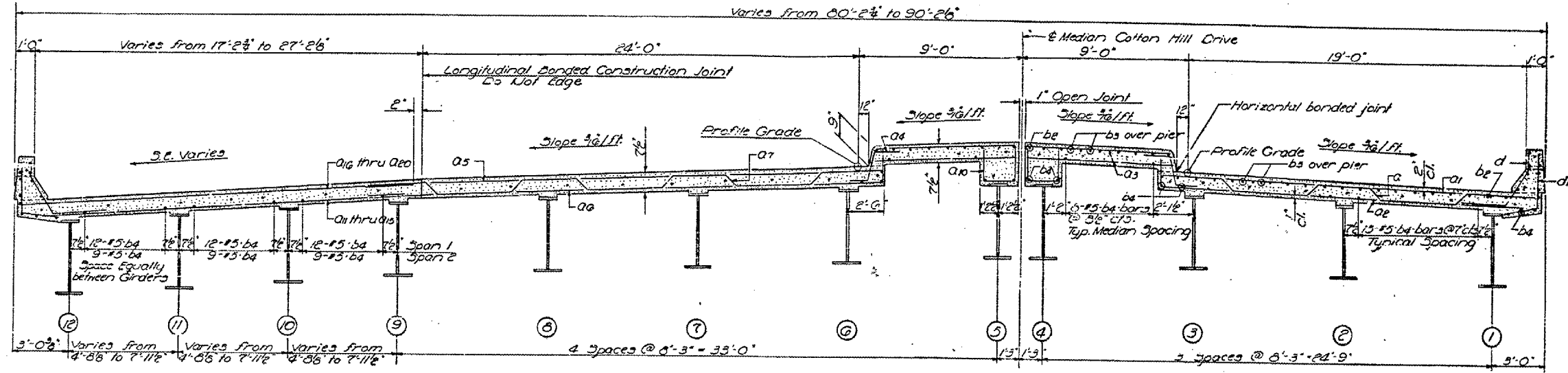
CONTRACT 72A70
SN 084-0116
EXISTING BRIDGE PLANS
FOR INFORMATION ONLY
(NOT TO SCALE)

STATE OF ILLINOIS
DEPARTMENT OF TRANSPORTATION

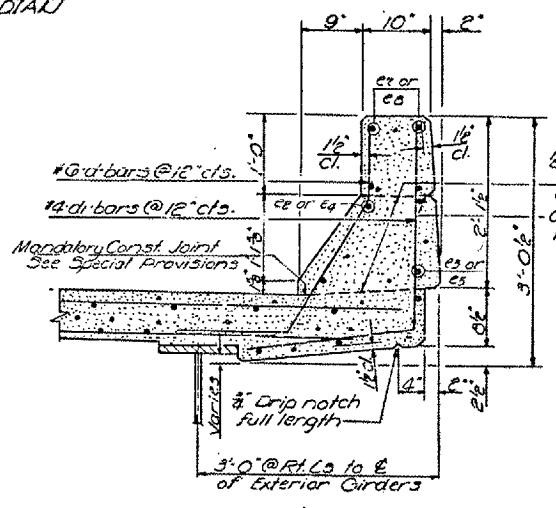
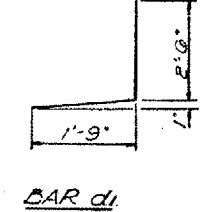
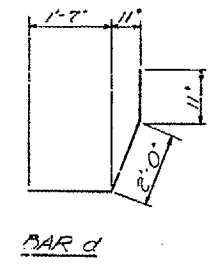
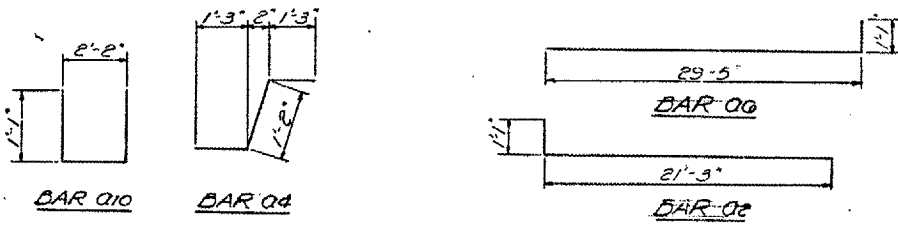
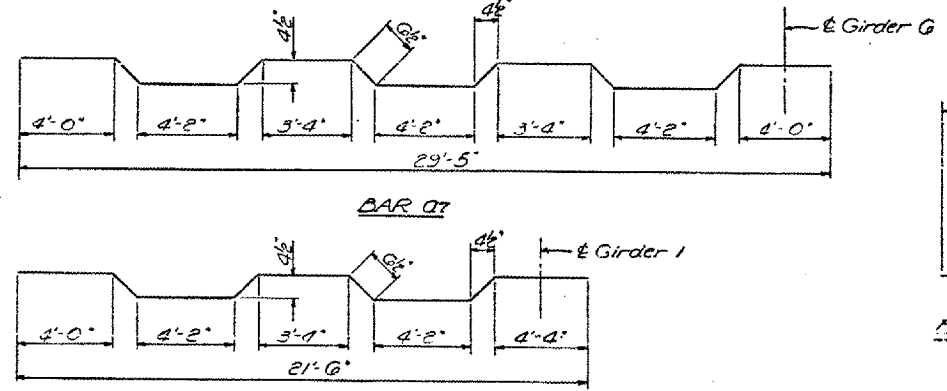
SHEET 7 OF 9

STATE OF ILLINOIS
DEPARTMENT OF PUBLIC WORKS & BUILDINGS
DIVISION OF HIGHWAYS

DATE	BY	CHKD	APPD	SHEET NO.
1-15-55	248			15
SANGAMON				45
ILL. ROAD DIST. NO. 7				18



CROSS SECTION
LOOKING WEST AT RT.
ANGLES TO E. MEDIAN



CURB SECTION

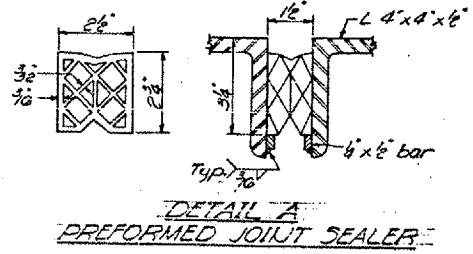
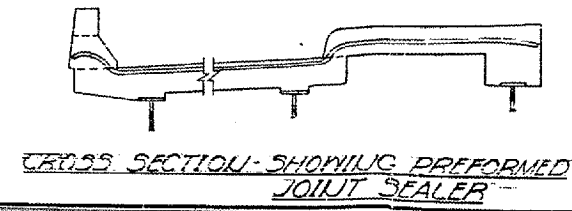
BILL OF MATERIAL

Bar No.	Size	Length	Shape
a	171 #8	22'-2"	
a1	150 #8	21'-8"	
a2	100 #8	22'-1"	
a3	144 #8	7'-7"	
a4	102 #5	3'-8"	
a5	151 #8	23'-0"	
a6	181 #8	30'-0"	
a7	170 #8	30'-3"	
a8	37E #5	4'-4"	
a9	70 #8	24'-0"	
a10	70 #8	25'-0"	
a11	70 #8	24'-0"	
a12	70 #8	25'-0"	
a13	70 #8	20'-0"	
a14	70 #8	18'-0"	
a15	71 #8	18'-0"	
a16	70 #8	23'-3"	
a17	70 #8	21'-3"	
a18	70 #8	19'-3"	
a19	71 #8	17'-3"	
a20	71 #8	17'-3"	
b2	630 #5	28'-0"	
b3	86 #8	39'-0"	
b4	759 #5	32'-0"	
d	380 #8	4'-0"	
d1	300 #4	4'-3"	
Class X Concrete Cu. Yds.			421.9
Structural Steel Lbs.			433,650
Reinforcement Bars Lbs.			134,790
Prefabricated Joint Sealer Lin. Ft.			174

DESIGNED *James M. Force*
CHECKED *I. Kaper*
DRAWN *Jacobs Jr*
CHECKED *I.K.*

EXAMINED *[Signature]*
PASSED *[Signature]*
APPROVED *[Signature]*

Jan. 15 1955



CONTRACT 72A70
SN 084-0116
EXISTING BRIDGE PLANS
FOR INFORMATION ONLY
(NOT TO SCALE)

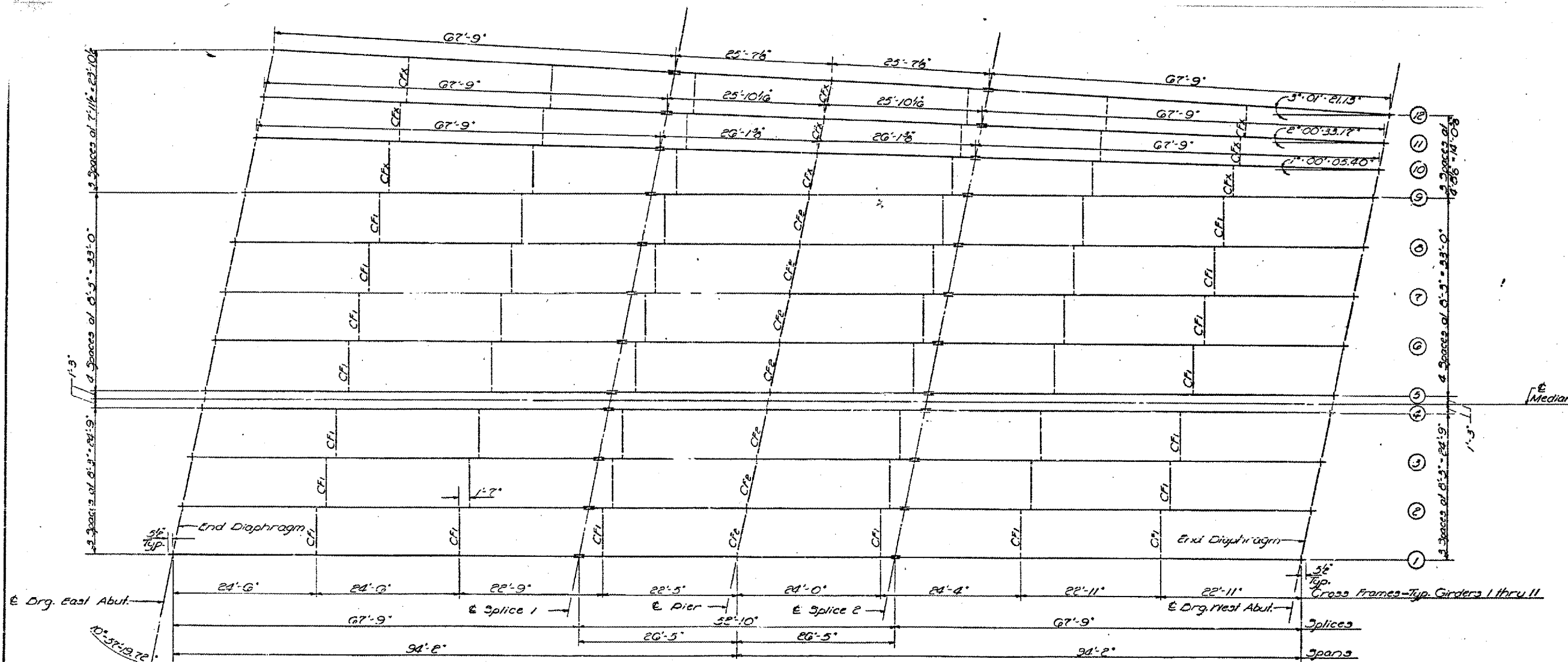
STATE OF ILLINOIS
DEPARTMENT OF TRANSPORTATION

SHEET 8 OF 9

STATE OF ILLINOIS
DEPARTMENT OF PUBLIC WORKS & BUILDINGS
DIVISION OF HIGHWAYS

PROJECT NO.	84-4	SECTION	248	DATE	45	24
CONTRACT NO.	Sangamon			DATE		
DESIGNED BY	SANGAMON			DATE		
CHECKED BY	SANGAMON			DATE		
DRAWN BY	SANGAMON			DATE		
APPROVED BY	SANGAMON			DATE		

SHEET NO. 12
19 SHEETS



GIRDER LAYOUT

DESIGNED	James M. Pence	EXAMINED	Jan 15 1968
CHECKED	James M. Pence	PASSED	H.E. Bauman
DRAWN	Jacobs SP	APPROVED	V.C. Hoff
CHECKED	JW		

CONTRACT 72A70
SN 084-0116
EXISTING BRIDGE PLANS
FOR INFORMATION ONLY
(NOT TO SCALE)

