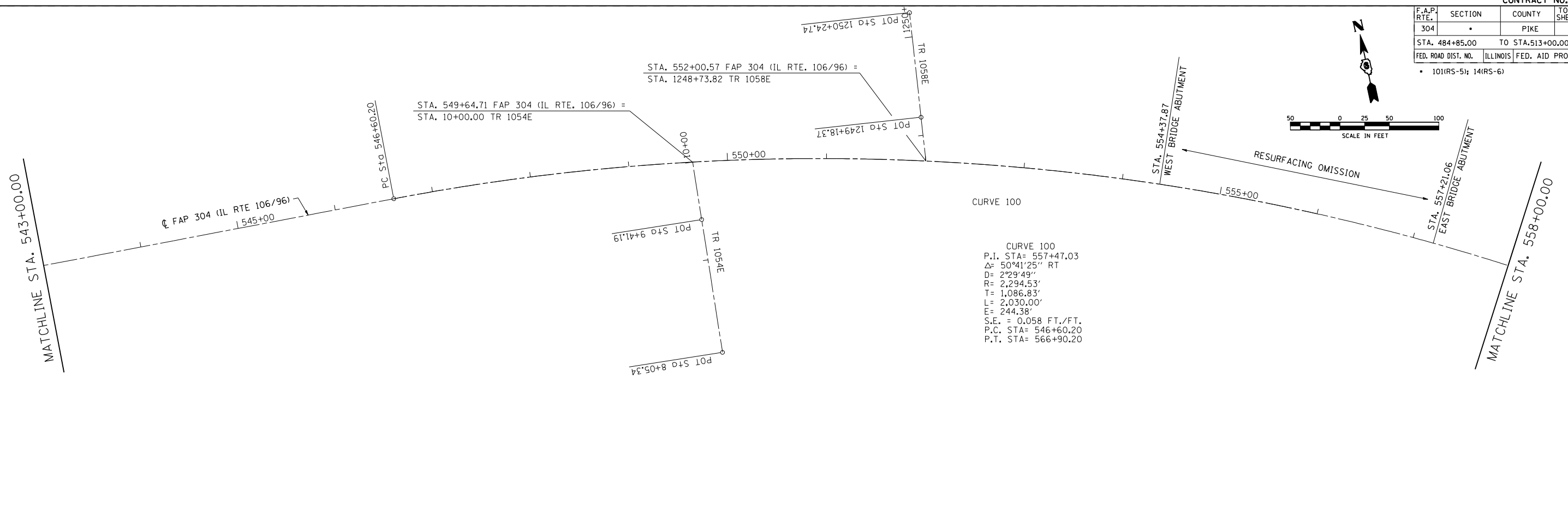
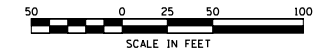
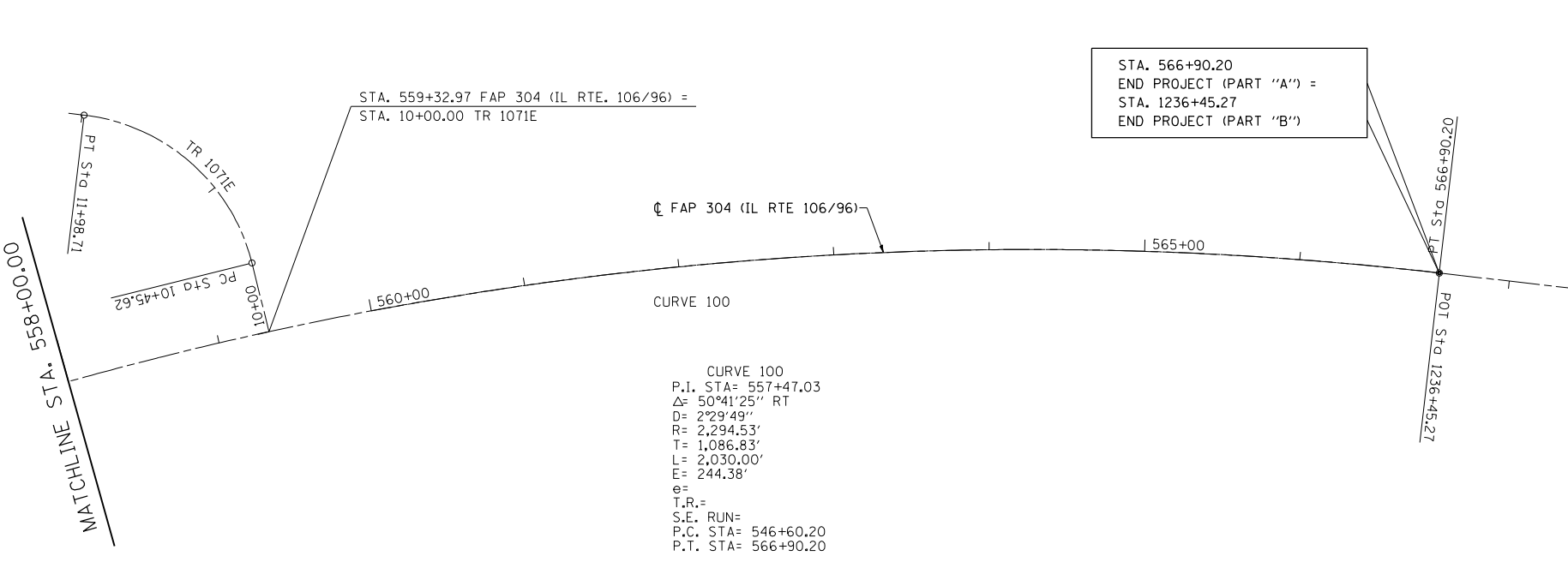


F.A.P. RTE.	SECTION	COUNTY	TOTAL SHEETS	SHEET NO.
304	.	PIKE	16	12
STA. 484+85.00		TO STA. 513+00.00		
FED. ROAD DIST. NO.		ILLINOIS	FED. AID PROJECT	
• 101(RS-5); 14(RS-6)				

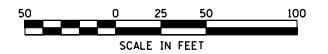
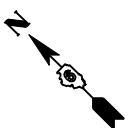


CURVE 100
 P.I. STA= 557+47.03
 Δ = 50°41'25" RT
 D= 2°29'49"
 R= 2,294.53'
 T= 1,086.83'
 L= 2,030.00'
 E= 244.38'
 e= 0.058 FT./FT.
 P.C. STA= 546+60.20
 P.T. STA= 566+90.20

STA. 566+90.20
 END PROJECT (PART "A") =
 STA. 1236+45.27
 END PROJECT (PART "B")



CURVE 100
 P.I. STA= 557+47.03
 Δ = 50°41'25" RT
 D= 2°29'49"
 R= 2,294.53'
 T= 1,086.83'
 L= 2,030.00'
 E= 244.38'
 e= 0.058 FT./FT.
 P.C. STA= 546+60.20
 P.T. STA= 566+90.20



PLOT DATE = 12/11/2006
 FILE NAME = c:\p\projects\4659877\shiplm\prtal.dgn
 PLOT SCALE = 1/8"=1'-0" / IN.
 USER NAME = laughlin-1

REVISIONS	
NAME	DATE

ILLINOIS DEPARTMENT OF TRANSPORTATION
ALIGNMENT SCHEMATIC
 FAP RTE. 304 (IL 106/96)
 SEC. 101(RS-5); 14(RS-6)
 PIKE COUNTY
 PART "A"
 SCALE: VERT. DRAWN BY TMJ
 HORIZ. CHECKED BY JCN
 DATE 10-27-06

PART "A", FAP 304 (IL 106/96)