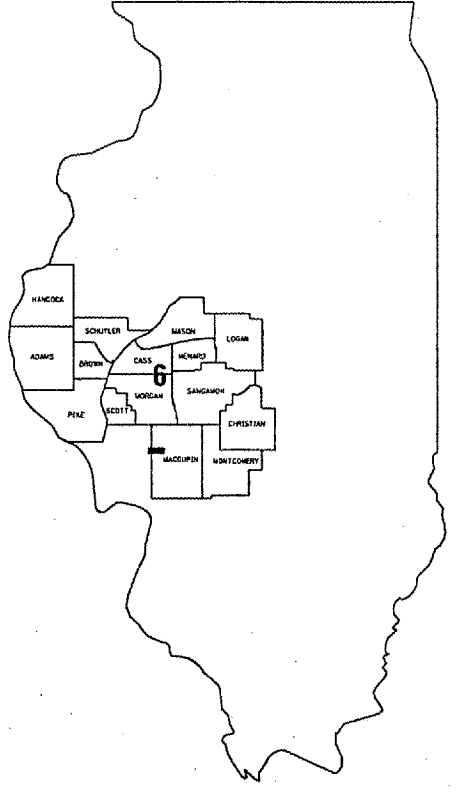


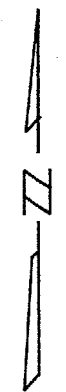
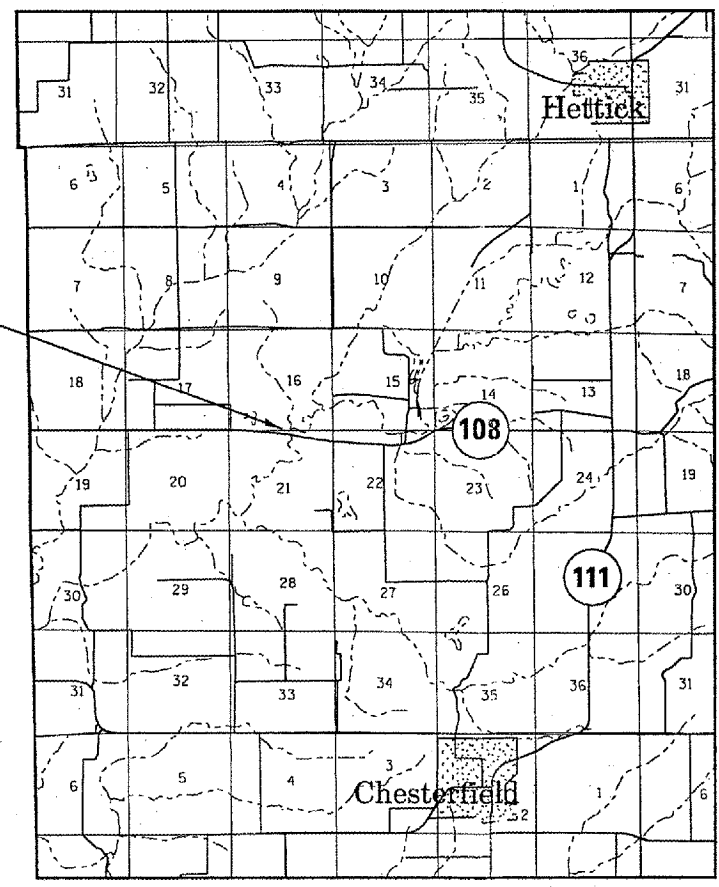
FOR INDEX OF SHEETS AND HIGHWAY
STANDARDS, SEE SHEET 2.

STATE OF ILLINOIS
DEPARTMENT OF TRANSPORTATION
DIVISION OF HIGHWAYS
**PROPOSED
HIGHWAY PLANS**
FAP ROUTE 761 (IL 108)
SECTION 107BR-5
MACOUPIN COUNTY
C-96-531-07 /D-96-515-07



LOCATION OF SECTION INDICATED THUS: ■

SN 059-0034



J. U. L. I. E.
JOINT UTILITY LOCATION INFORMATION FOR EXCAVATION
1-800-892-0123

BRIDGE INSPECTION ENGINEER: DAVE COPENBARGER
PHONE: (217) 785-5306

NET LTH OF SEC 561 FT=0.11 MILE

STATE OF ILLINOIS
DEPARTMENT OF TRANSPORTATION
DIVISION OF HIGHWAYS

SUBMITTED December 21, 2006

Christ M. Reed
DEPUTY DIRECTOR OF HIGHWAYS, REGION FOUR ENGINEER

February 2, 2007

Eric E. Harm
ENGINEER OF DESIGN AND ENVIRONMENT

February 2, 2007

Milton R. Sees, P.E.
DIRECTOR, DIVISION OF HIGHWAYS

CONTRACT NO. 72A85

INDEX

STANDARDS

1	COVER SHEET	701001-01
2	INDEX, STANDARDS, & GENERAL NOTES	701006-02
3	SUMMARY OF QUANTITIES	701201-02
4-5	TRAFFIC CONTROL DETAILS	
6	BRIDGE PLAN	

GENERAL NOTES:

PLAN DIMENSIONS AND DETAILS RELATIVE TO EXISTING STRUCTURE HAVE BEEN TAKEN FROM EXISTING PLANS AND ARE SUBJECT TO NOMINAL CONSTRUCTION VARIATIONS. IT SHALL BE THE CONTRACTOR'S RESPONSIBILITY TO VERIFY SUCH DIMENSIONS AND DETAILS IN THE FIELD AND MAKE NECESSARY APPROVED ADJUSTMENTS PRIOR TO CONSTRUCTION OR ORDERING OF MATERIALS. SUCH VARIATIONS SHALL NOT BE CAUSE FOR ADDITIONAL COMPENSATION OR A CHANGE IN THE SCOPE OF WORK, HOWEVER, THE CONTRACTOR WILL BE PAID FOR THE QUANTITY ACTUALLY FURNISHED AT THE UNIT PRICE FOR THE WORK.

STATE OF ILLINOIS DEPARTMENT OF TRANSPORTATION DIVISION OF HIGHWAYS DISTRICT 6	
EXAMINED	December 18 20 06
	<i>[Signature]</i> ENGINEER OF OPERATIONS
EXAMINED	DEC 18 20 06
	<i>[Signature]</i> ENGINEER OF PROGRAM IMPLEMENTATION
EXAMINED	DECEMBER 19 20 06
	<i>[Signature]</i> ENGINEER OF PROGRAM DEVELOPMENT

INDEX & GENERAL NOTES
FAS 761 (IL 108)
SECTION 107BR-5
MACOUPIN COUNTY

SUMMARY OF QUANTITIES

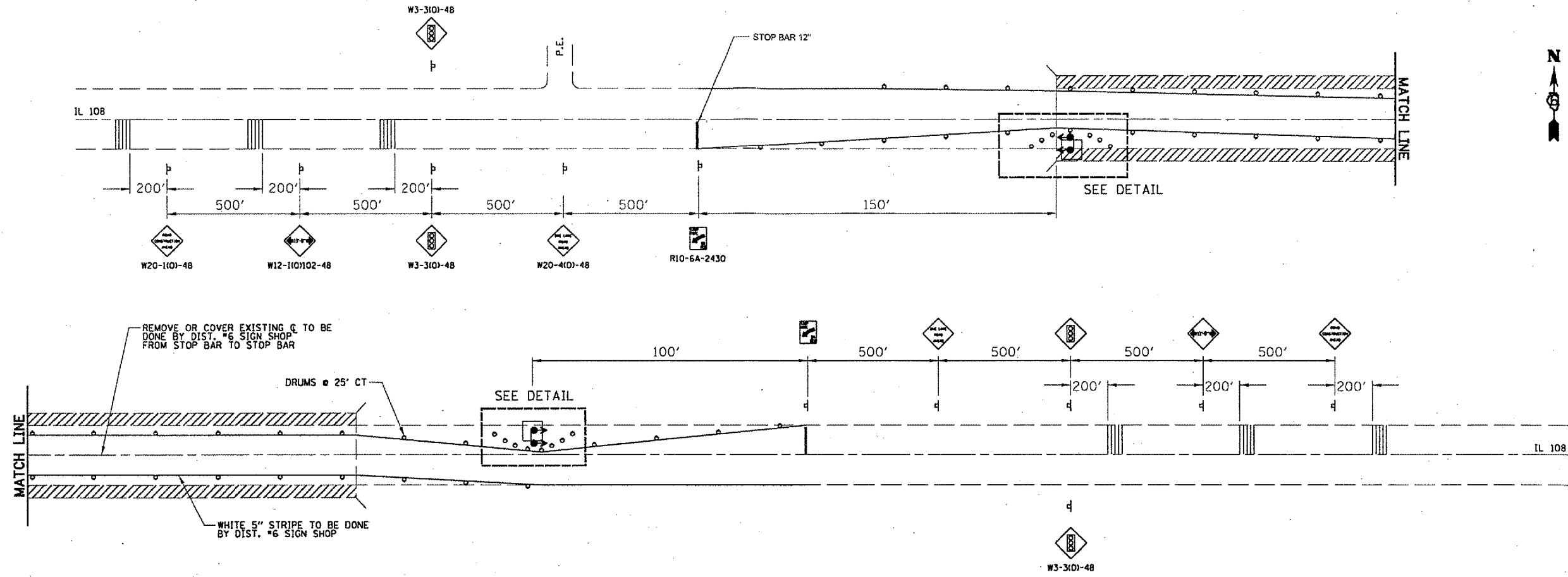
PAY ITEM NUMBER	DESCRIPTION	UNIT	100'-STATE SFTY-2A	TOTAL QTY.
50500405	FURNISHING AND ERECTING STRUCTURAL STEEL	POUND	53,540	53,540
67100100	MOBILIZATION	L SUM	1	1
70103700	TRAFFIC CONTROL COMPLETE	L SUM	1	1
X0324401	PORTABLE TEMPORARY BARRIER SYSTEM, TL-3	FOOT	104	104
* 80501000	SERVICE INSTALLATION (SPECIAL)	EACH	1	1

* SPECIALTY ITEMS

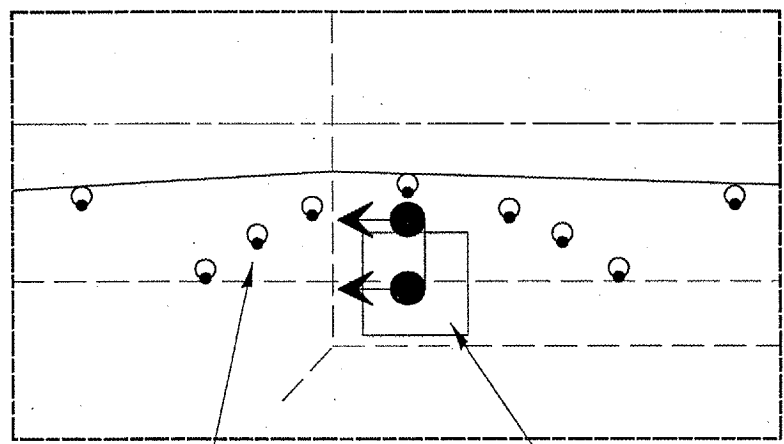
Rev.

SUMMARY OF QUANTITIES
FAS 761 (IL 108)
SECTION 107BR-5
MACOUPIN COUNTY

F.A.P. RTE.	SECTION	COUNTY	TOTAL SHEETS	SHEET NO.
761	107BR-5	MACOUPIN	6	4
STA. ...+... TO STA. ...+...				
FED. ROAD DIST. NO. ILLINOIS FED. AID PROJECT				

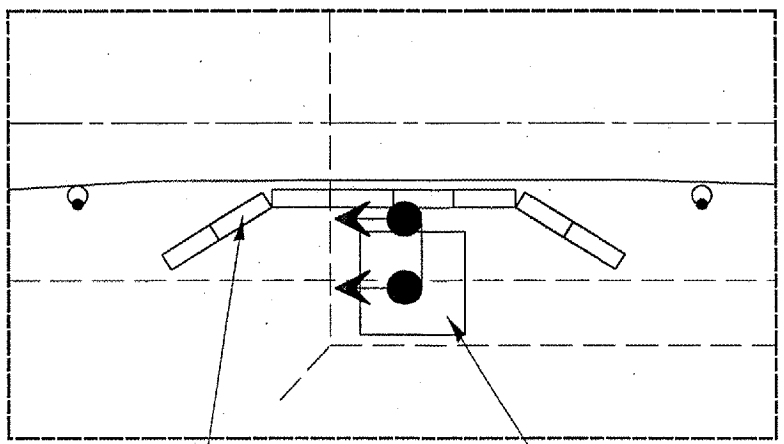


TYPICAL SIGNAL DETAIL (EXISTING)



TYPE 2 BARRICADES
TEMPORARY TRAFFIC SIGNALS

TYPICAL SIGNAL DETAIL (PROPOSED)



WATER FILLED BARRIER (52' PER SETUP)
TEMPORARY TRAFFIC SIGNALS

- SYMBOLS**
- WORK AREA
 - SIGN
 - DRUM WITH STEADY BURNING LIGHT
 - TRAFFIC SIGNAL
 - TEMPORARY RUMBLE STRIP

GENERAL NOTES

THIS TRAFFIC CONTROL SETUP WILL BE PLACED BY IDOT BEFORE EXECUTION OF THIS CONTRACT. THIS PLAN ALSO DETAILS WHERE THE WATER FILLED BARRIER SHALL BE PLACED BY THE CONTRACTOR. ALL NORMAL MAINTENANCE OF THE TRAFFIC CONTROL DETAILED ON THIS SHEET SHALL BE THE RESPONSIBILITY OF IDOT. THE CONTRACTOR WILL BE RESPONSIBLE FOR RE-SETTING, REPAIRING, OR REPLACING ANY TRAFFIC CONTROL ITEMS MOVED, OR DAMAGED FOR THE DURATION OF THIS CONTRACT.

PLACEMENT OF THE BARRIER WALL SHALL BE APPROVED BY THE ENGINEER BEFORE THE CONTRACTOR FILLS IT WITH WATER.

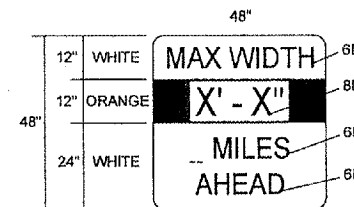
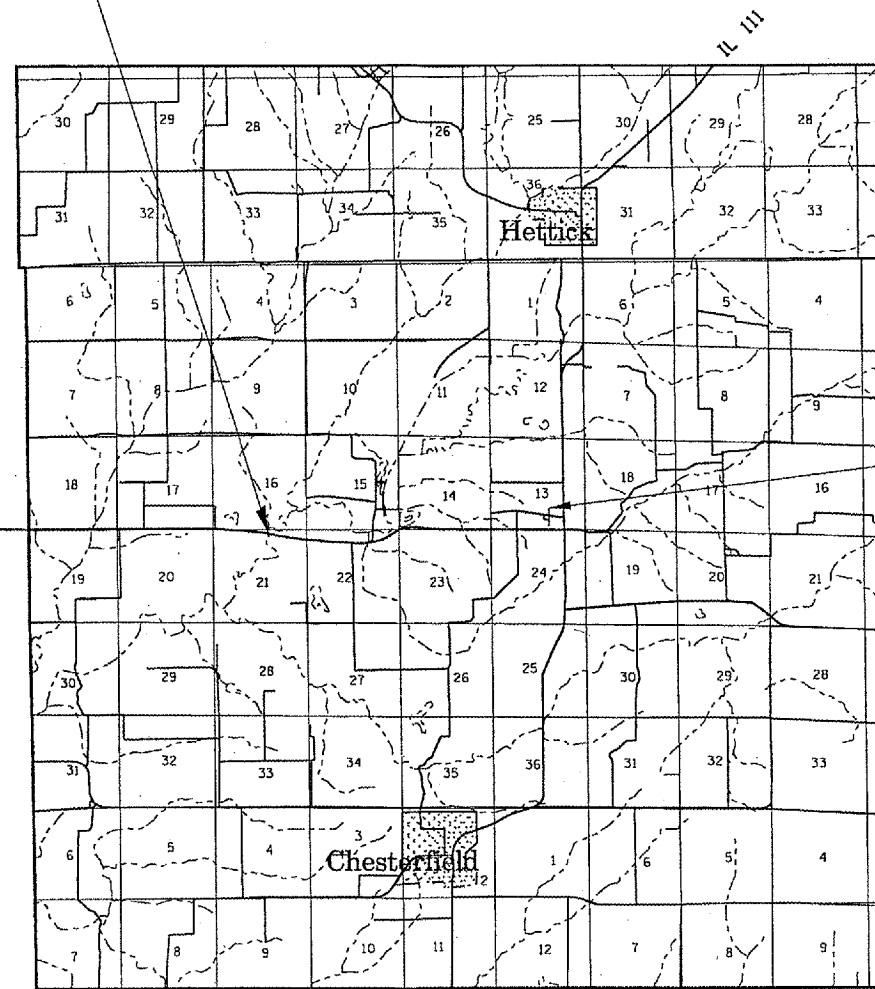
TRAFFIC CONTROL STANDARD 701316 SPECIAL
IL. ROUTE 108 OVER HODGES CREEK
MACOUPIN COUNTY

F.A.P. RTE.	SECTION	COUNTY	TOTAL SHEETS	SHEET NO.
761	107BR-5	MACOUPIN	6	5
STA. TO STA.				
FED. ROAD DIST. NO. ILLINOIS FED. AID PROJECT				

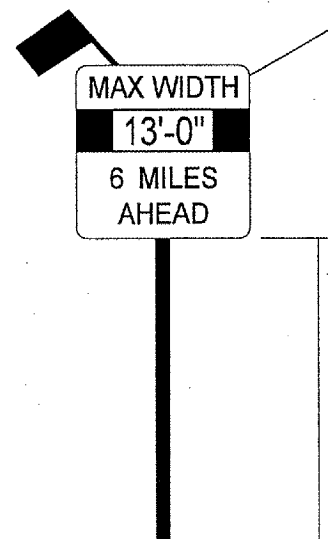
IL 108 OVER HODGES CREEK

US 267

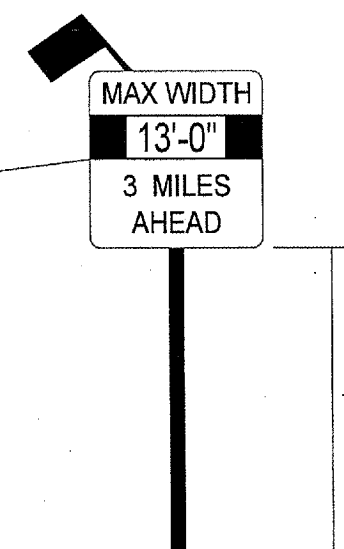
TO CARROLLTON IL 108



MAX WIDTH
DETAIL



7 Ft. (Min.)



7 Ft. (Min.)

TO BE SET UP BY IDOT
FOR INFORMATION ONLY

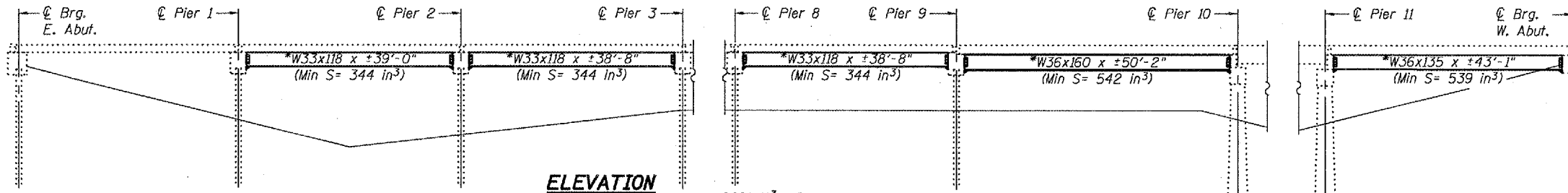
MAX WIDTH SIGN DETAIL
IL. ROUTE 108 OVER HODGES CREEK
MACOUPIN COUNTY

STATE OF ILLINOIS
DEPARTMENT OF TRANSPORTATION

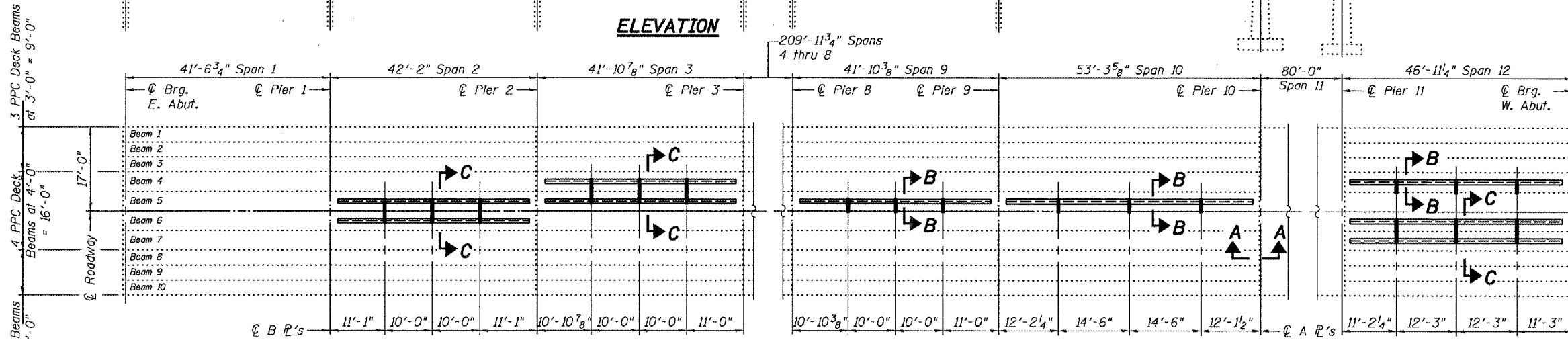
*Other sections meeting the minimum section modulus shown may be acceptable subject to approval by the Bureau of Bridges and Structures

ROUTE NO.	SECTION	COUNTY	SHEET NO.	SHEET NO. 1
		Macoupin	6	1 SHEETS
FED. PROJ. DIST. NO. 7	ILLINOIS	FED. AID PROJECT		

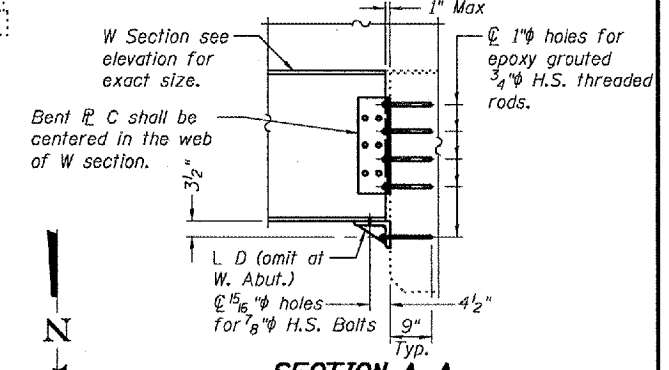
Contract Number: 72AB5



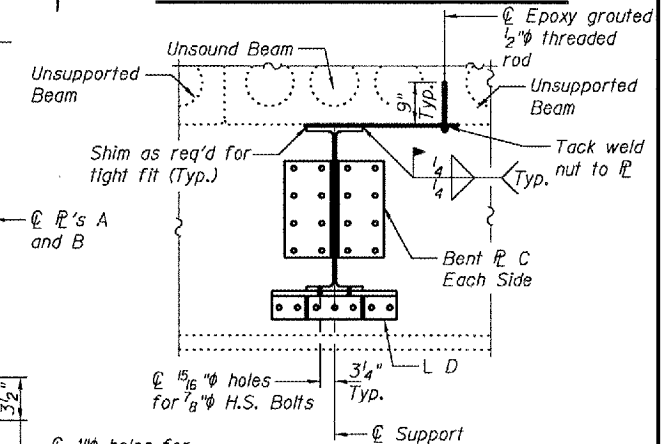
ELEVATION



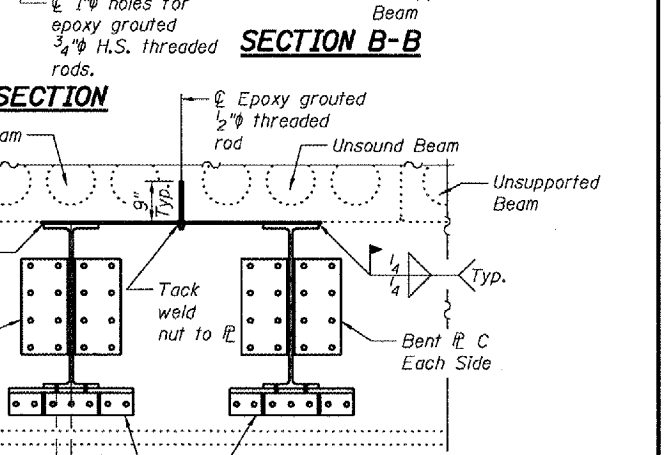
PLAN



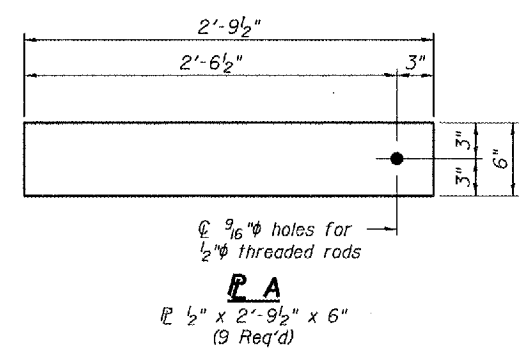
SECTION A-A
TYPICAL CONNECTION SECTION



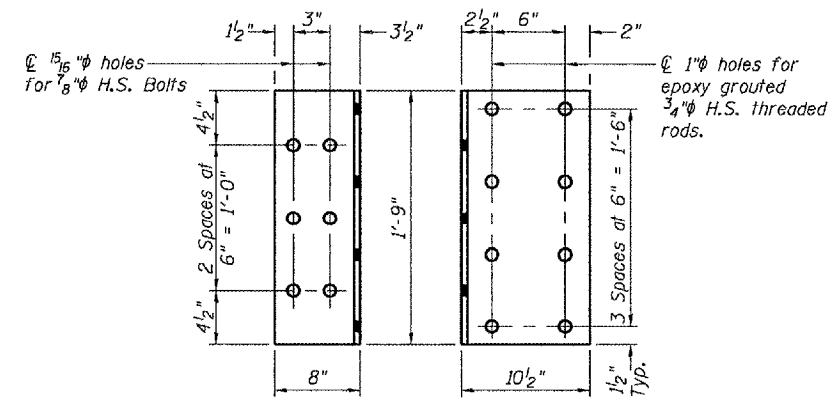
SECTION B-B
TYPICAL L D SECTION



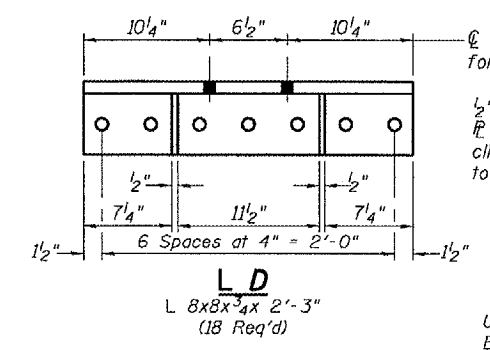
SECTION C-C



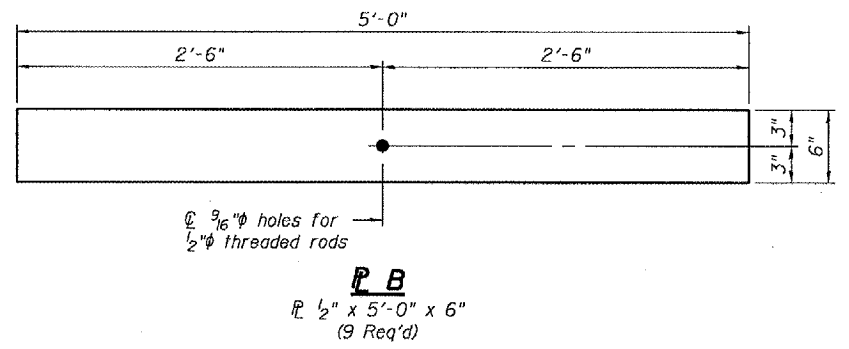
BENT P A
P 1/2" x 2'-9 1/2" x 6"
(9 Req'd)



BENT P C
P 1/2" x 1'-6 1/2" x 1'-9"
(36 Req'd)



L D
L 8x8x3/4 x 2'-3"
(18 Req'd)



BENT P B
P 1/2" x 5'-0" x 6"
(9 Req'd)

GENERAL NOTES

All structural steel shall conform to AASHTO Classification M-270 Gr. 36, unless otherwise noted.

Plan dimensions and details relative to existing plans are subject to routine variations. The Contractor shall field verify existing dimensions and details affecting new construction and make necessary approved adjustments prior to construction or ordering of materials. Such variations shall not be cause for additional compensation for a change in scope of the work, however, the Contractor will be paid for the quantity actually furnished based upon the unit price bid for the work.

See Section 584 of the Standard Specifications for Epoxy Grouting of Threaded Rods.

The cost of epoxy grouting threaded rods shall be included with Furnishing and Erecting Structural Steel.

The cost of excavation required to attach support beams to abutment face shall be included with Furnishing and Erecting Structural Steel.



DESIGNED	W. Balz	EXAMINED	January 12, 2007
CHECKED	[Signature]	PASSED	Ralph E. Anderson
DRAWN	[Signature]		
CHECKED	ABH		

TOTAL BILL OF MATERIAL

ITEM	UNIT	QUANTITY
Furnishing and Erecting Structural Steel	Pound	53,540

PLAN AND ELEVATION
F.A.P. RT. 761 (IL 108)
MACOUPIN COUNTY
SN 059-0034

Expires: November 30, 2008