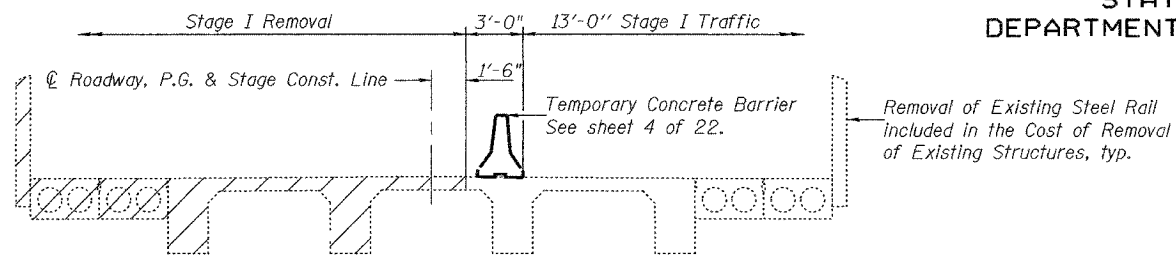


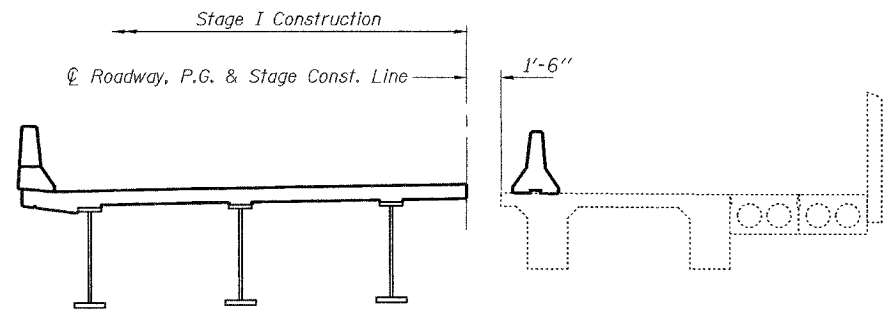
STATE OF ILLINOIS
DEPARTMENT OF TRANSPORTATION

ROUTE NO.	SECTION	COUNTY	TOTAL SHEETS	SHEET NO.	SHEET NO. 3
F.A.S. 1842	106BR	ST. CLAIR	61	24	22 SHEETS
FED. ROAD DIST. NO. 7	ILLINOIS	FED. AID PROJECT			

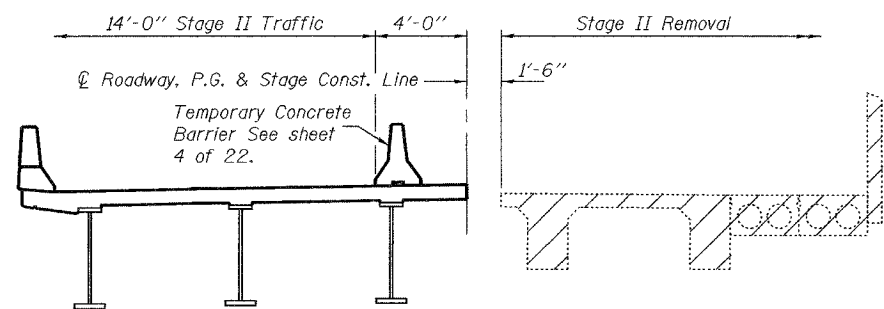
Contract No. 76129



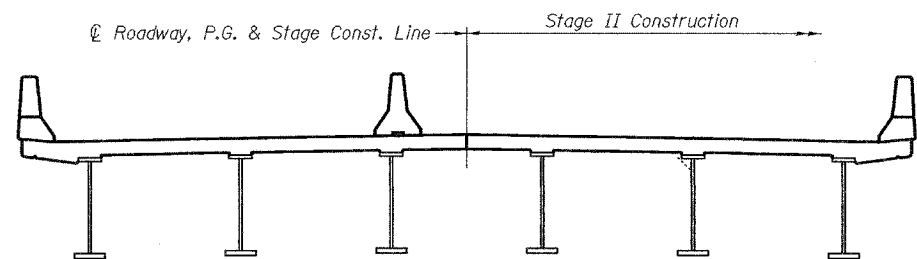
STAGE I REMOVAL



STAGE I CONSTRUCTION

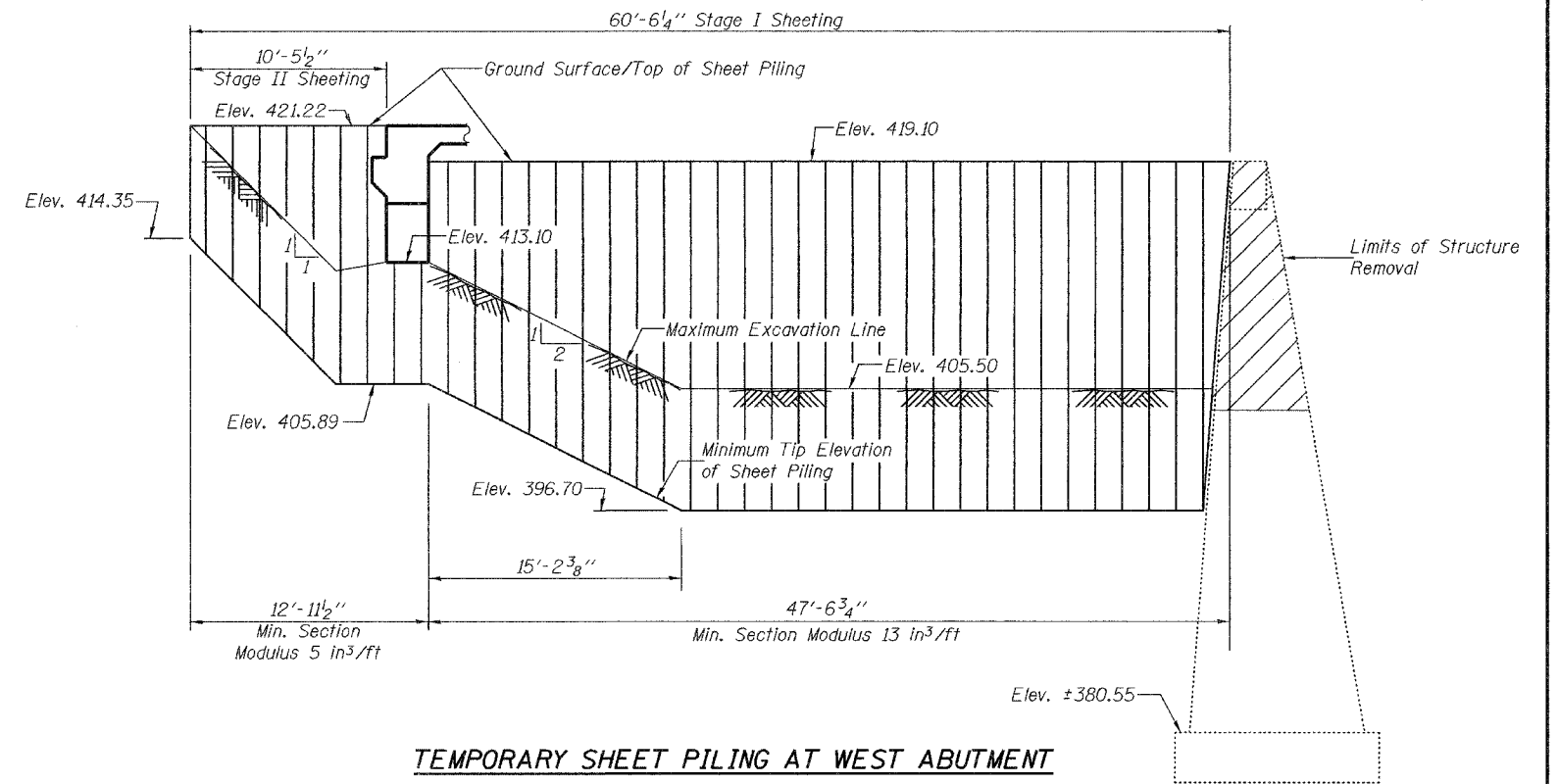


STAGE II REMOVAL

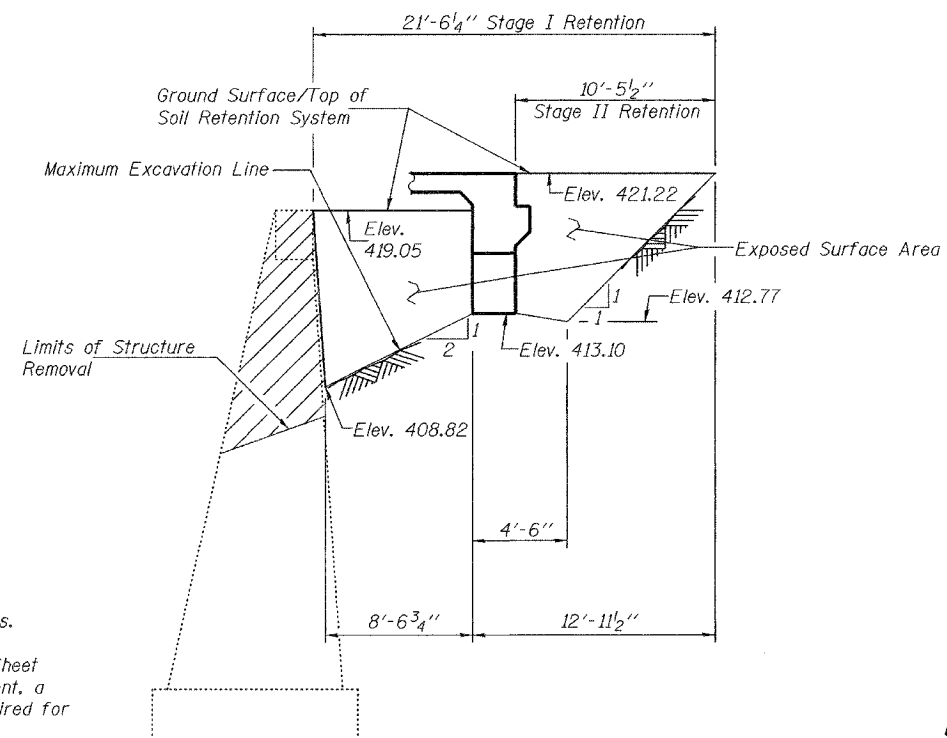


STAGE II CONSTRUCTION

Notes:
Hatched area indicates Removal of Existing Structures.
For quantity of Temporary Concrete Barriers, see Roadway Plans.
All staging sections are looking East.
If the Contractor chooses to alter the Temporary Cantilevered Sheet Piling design requirements shown on the plans at the West Abutment, a design submittal including plan details and calculations will be required for review and acceptance by the Engineer.
A Cantilevered Sheet Piling design does not appear feasible at the East Abutment and additional members or other retention systems may be necessary. The Contractor shall submit a Temporary Soil Retention System design including plan details and calculations for review and acceptance by the Engineer.



TEMPORARY SHEET PILING AT WEST ABUTMENT



TEMPORARY SOIL RETENTION SYSTEM AT EAST ABUTMENT

STAGE CONSTRUCTION DETAILS
F.A.S. ROUTE 1842 - SECTION 106BR
ST. CLAIR COUNTY
STATION 669+65.50
STRUCTURE NO. 082-0387

DESIGNED	JEK
CHECKED	RLM
DRAWN	BMC AMBER SEIBER
CHECKED	RLM

EXAMINED	January 23, 2007
PASSED	Thomas J. Damgalab ENGINEER OF BRIDGES AND STRUCTURES
	Ralph E. Carlson ENGINEER OF BRIDGES AND STRUCTURES