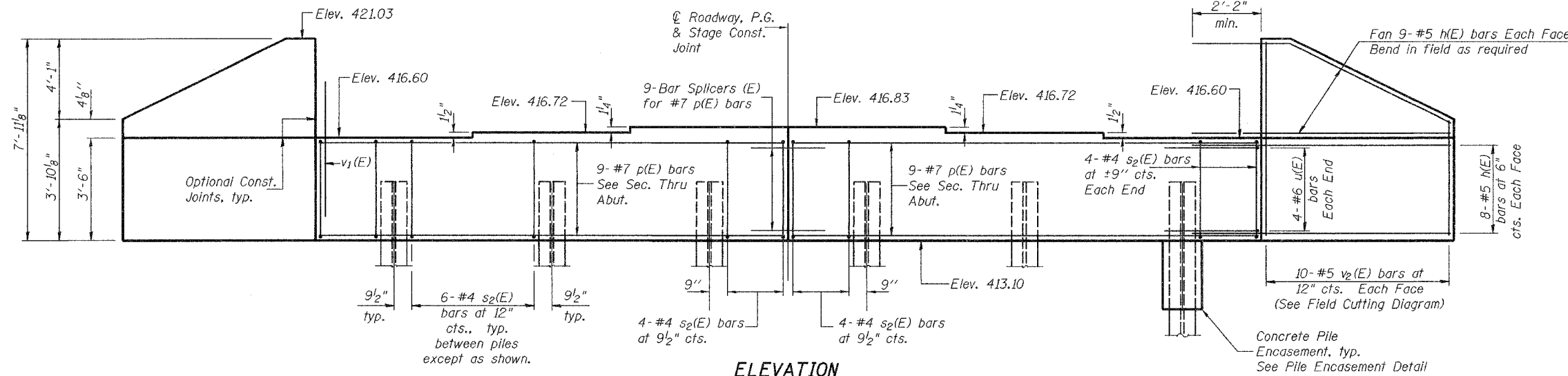


STATE OF ILLINOIS  
DEPARTMENT OF TRANSPORTATION

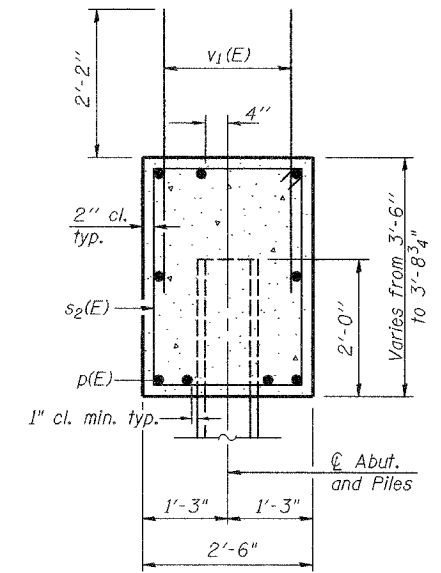
ROUTE NO.	SECTION	COUNTY	TOTAL SHEETS	SHEET NO.
F.A.S. 1842	106BR	ST. CLAIR	61	36
FED. ROAD DIST. NO. 7	ILLINOIS	FED. AID PROJECT-		

SHEET NO. 15  
22 SHEETS  
Contract No. 76129

Notes:  
Four steps monolithically with cap.  
For anchor bolt installation details see sheet 13 of 22.  
For bar splicer assembly details see sheet 18 of 22.  
The steel H-piles shall be according to AASHTO M270, Grade 50.



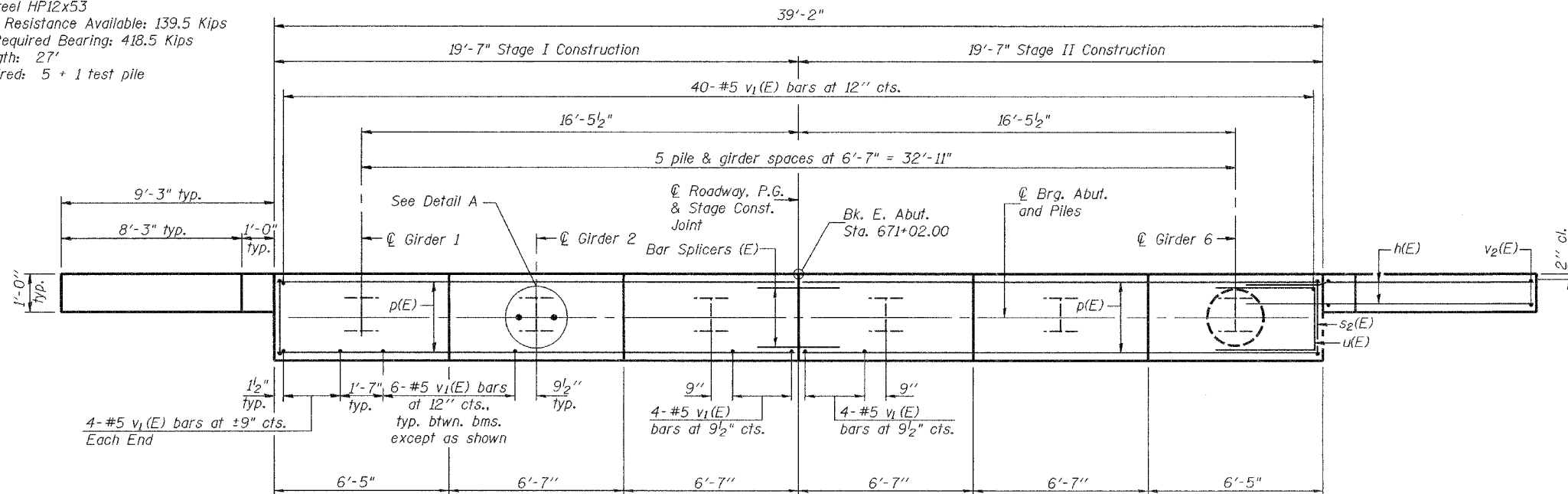
**ELEVATION**  
(Looking East)



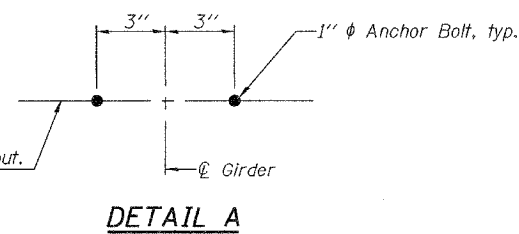
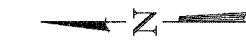
**SEC. THRU ABUT.**

**PILE DATA**

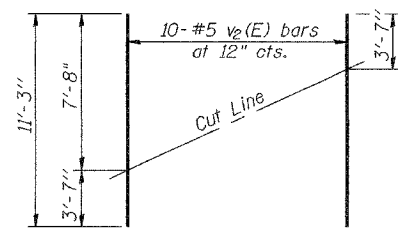
Type: Steel HP12x53  
Allowable Resistance Available: 139.5 Kips  
Nominal Required Bearing: 418.5 Kips  
Est. Length: 27'  
No. Required: 5 + 1 test pile



**PLAN**

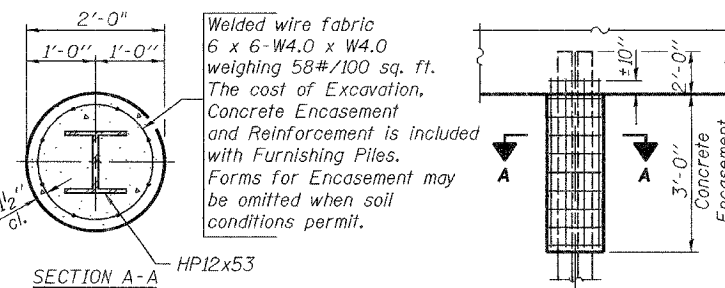


**DETAIL A**

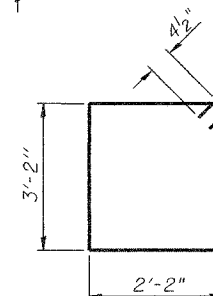


**FIELD CUTTING DIAGRAM**

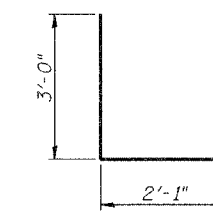
Order v2(E) full length. Cut as shown and use remainder of bars in opposite face.



**PILE ENCASEMENT DETAIL**



**BAR s2(E)**



**BAR u(E)**

**BILL OF MATERIAL**

Bar	No.	Size	Length	Shape
h(E)	68	#5	12'-5"	—
p(E)	18	#7	19'-3"	—
s2(E)	40	#4	11'-5"	□
u(E)	8	#6	8'-1"	—
v1(E)	80	#5	4'-4"	—
v2(E)	20	#5	11'-3"	—
Concrete Structures			Cu. Yd.	17.3
Reinforcement Bars, Epoxy Coated			Pound	2590
Structure Excavation			Cu. Yd.	92
Furnishing Steel Piles HP12x53			Foot	135
Driving Piles			Foot	135
Test Pile Steel HP12x53			Each	1

DESIGNED	JEK
CHECKED	RLM
DRAWN	AMC AMBER SEIBER
CHECKED	RLM

January 23, 2007  
EXAMINED *Thomas J. Damagala*  
ENGINEER OF BRIDGE DESIGN  
PASSED *Ronald E. Anderson*  
ENGINEER OF BRIDGES AND STRUCTURES

**EAST ABUTMENT**  
F.A.S. ROUTE 1842 - SECTION 106BR  
ST. CLAIR COUNTY  
STATION 669+65.50  
STRUCTURE NO. 082-0387