

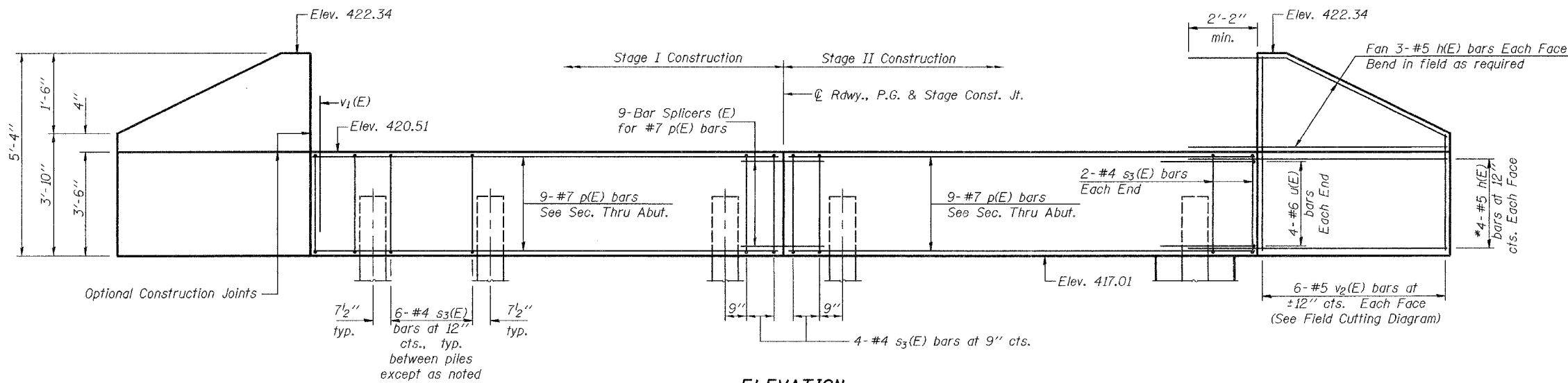
STATE OF ILLINOIS
DEPARTMENT OF TRANSPORTATION

| | | | | | |
|-----------------------|---------|----------|------------------|-------|--------------------------|
| ROUTE NO. | SECTION | COUNTY | STA. | SHEET | SHEET NO. 6 11 SHEETS |
| F.A.U. 9079 | 65BR | MADISON | 40 | 23 | |
| FED. ROAD DIST. NO. 7 | | ILLINOIS | FED. AID PROJECT | | |

Contract 76136

Notes: For bar splicer details see sheet 10 of 11.

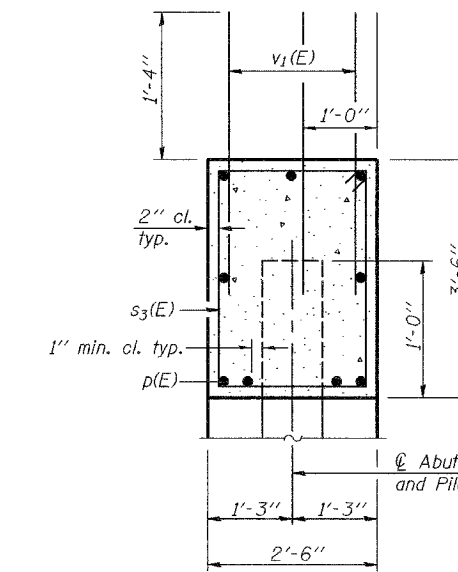
Excavation behind existing abutment walls shall be performed to balance front and back soil pressure before removing the existing superstructure. The Contractor shall sawcut the upper portion of the existing abutment at the stage removal line before Stage I removal to ensure the remaining portion will not be prematurely damaged.



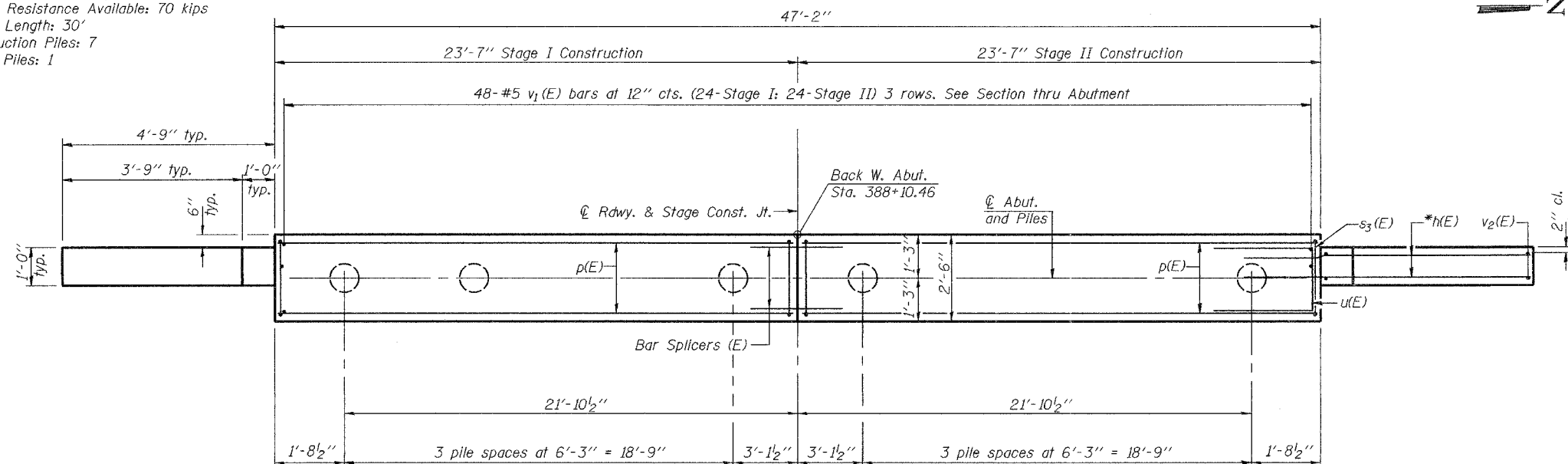
ELEVATION
(Looking West)

PILE DATA

Pile Type and Size: Metal Shell - 12" dia. x 0.179" walls
Nominal Required Bearing: 210 kips
Allowable Resistance Available: 70 kips
Est. Pile Length: 30'
No. Production Piles: 7
No. Test Piles: 1



SEC. THRU ABUT.



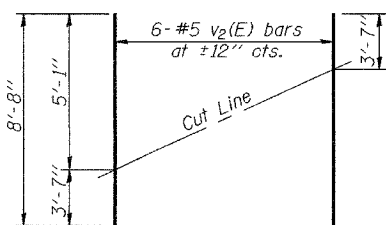
PLAN



*If h(E) bars interfere with metal shells, cut h(E) bars in field to fit.

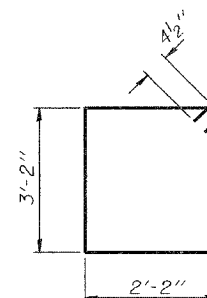
BILL OF MATERIAL

| Bar | No. | Size | Length | Shape | |
|------------------------------------|-----|------|--------|---------|------|
| h(E) | 28 | #5 | 7'-3" | — | |
| p(E) | 18 | #7 | 23'-4" | — | |
| s3(E) | 48 | #4 | 11'-5" | □ | |
| u(E) | 8 | #6 | 8'-1" | — | |
| v1(E) | 144 | #5 | 3'-6" | — | |
| v2(E) | 12 | #5 | 8'-8" | — | |
| Concrete Structures | | | | Cu. Yd. | 17.0 |
| Reinforcement Bars, Epoxy Coated | | | | Pound | 2170 |
| Structure Excavation | | | | Cu. Yd. | 80 |
| Furnishing Metal Pile Shells 12" φ | | | | Foot | 210 |
| Driving Piles | | | | Foot | 210 |
| Test Piles Metal Shells | | | | Each | 1 |

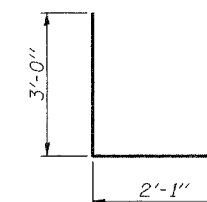


FIELD CUTTING DIAGRAM

Order v2(E) full length. Cut as shown and use remainder of bars in opposite face.



BAR s2(E)



BAR u(E)

| | |
|----------|-----------------|
| DESIGNED | R.L.T. |
| CHECKED | J.P.A. & T.R.B. |
| DRAWN | BECKY M. LEACH |
| CHECKED | R.L.T. & G.R.A. |

November 22, 2006
EXAMINED *Thomas J. Damagala*
PASSED *Ralph E. Anderson*
ENGINEER OF BRIDGE DESIGN
ENGINEER OF BRIDGES AND STRUCTURES

WEST ABUTMENT
F.A.U. ROUTE 9079 - SECTION 65BR
MADISON COUNTY
STATION 388+43.96
STRUCTURE NO. 060-0236