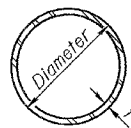


STATE OF ILLINOIS  
DEPARTMENT OF TRANSPORTATION

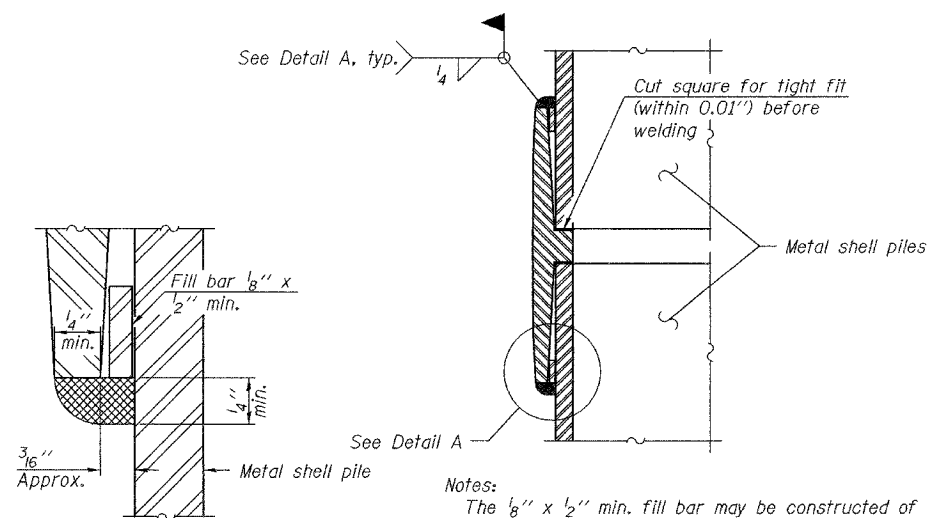
ROUTE NO.	SECTION	COUNTY	TOTAL SHEETS	SHEET NO.	SHEET NO. 9 11 SHEETS
F.A.U. 9079	65BR	MADISON	46	26	
FED. ROAD DIST. NO. 7	BLINDS	FED. AID PROJECT-			

Contract 76136



METAL SHELL PILE TABLE

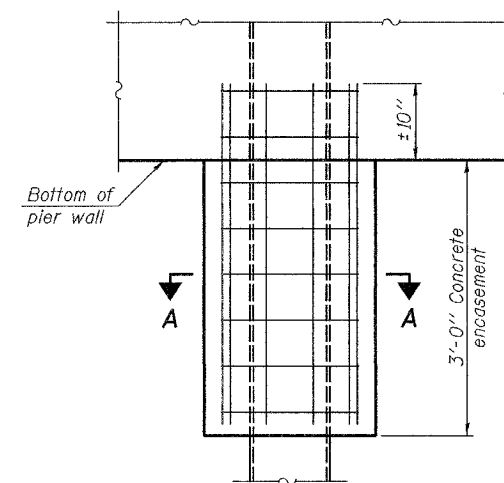
Designation	Wall thickness t	Weight per foot (Lbs./ft.)	Inside volume (yd. <sup>3</sup> /ft.)	Encasement diameter A
PP12	0.179"	22.60	0.0274	30"
PP12	0.250"	31.37	0.0267	30"
PP14	0.250"	36.71	0.0368	30"
PP14	0.312"	45.61	0.0361	30"



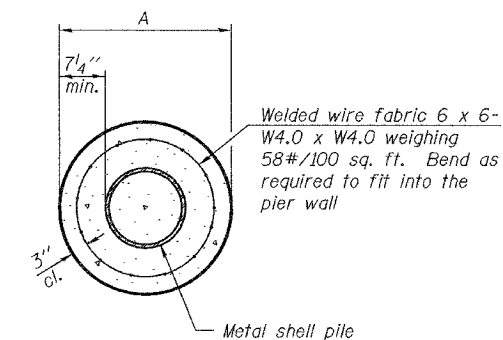
DETAIL A

Notes:  
The 1/8" x 1/2" min. fill bar may be constructed of 2 bars with a 1/8" max. gap between them.  
Pile segments shall be driven to solid contact with splicer before welding.

WELDED COMMERCIAL SPLICE



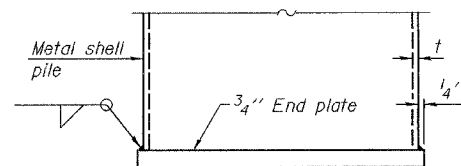
ELEVATION



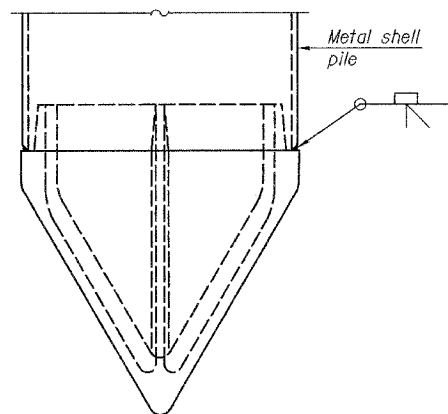
SECTION A-A

Notes:  
See Metal Shell Pile Table for dimension "A".  
Forms for encasement may be omitted when soil conditions permit.

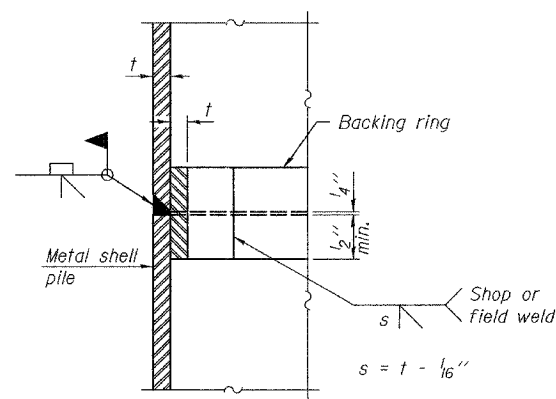
CONCRETE ENCASEMENT AT PIERS



END PLATE ATTACHMENT

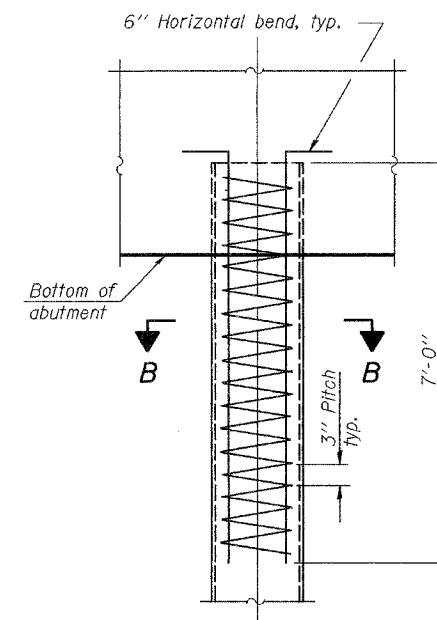


METAL SHELL PILE SHOE ATTACHMENT

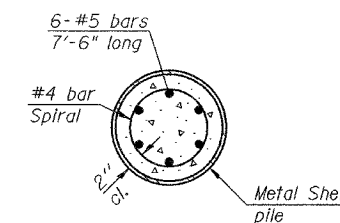


COMPLETE PENETRATION WELD SPLICE

Backing ring made from pile shell. Remove segment to allow reducing circumference and vertically rejoin with partial joint penetration weld.



ELEVATION



SECTION B-B

METAL SHELL REINFORCEMENT AT ABUTMENTS

DESIGNED	R.L.T.
CHECKED	J.P.A. & T.R.B.
DRAWN	BECKY M. LEACH
CHECKED	R.L.T. & G.R.A.

November 22, 2006
EXAMINED <i>Thomas J. Damgalab</i>
PASSED <i>Ralph E. Anderson</i>

F-MS 11-1-06

Note:  
The metal shell piles shall be according to ASTM A 252 Grade 3.

PILE DETAILS  
F.A.U. ROUTE 9079 - SECTION 65BR  
MADISON COUNTY  
STATION 388+43.96  
STRUCTURE NO. 060-0236