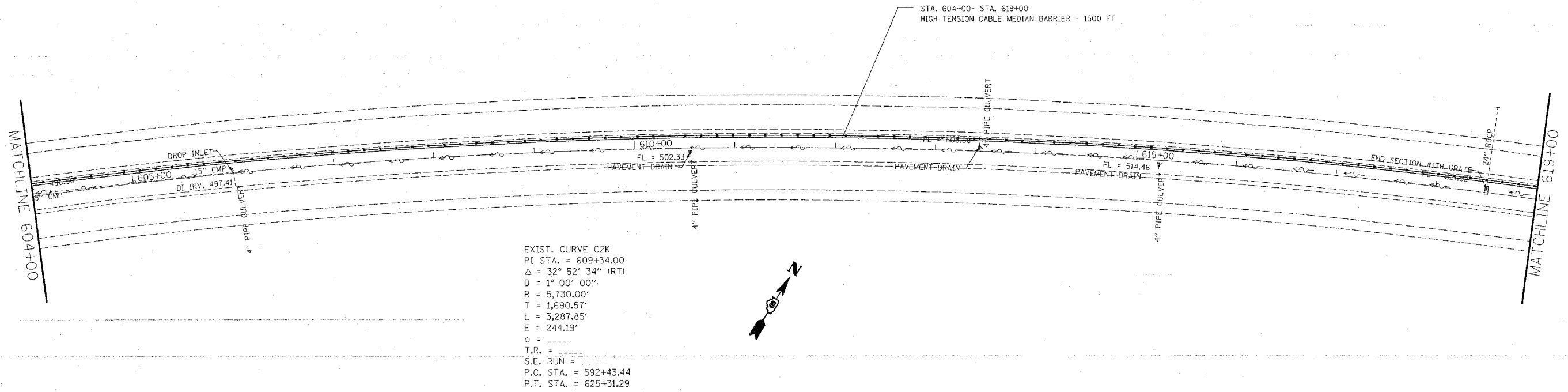
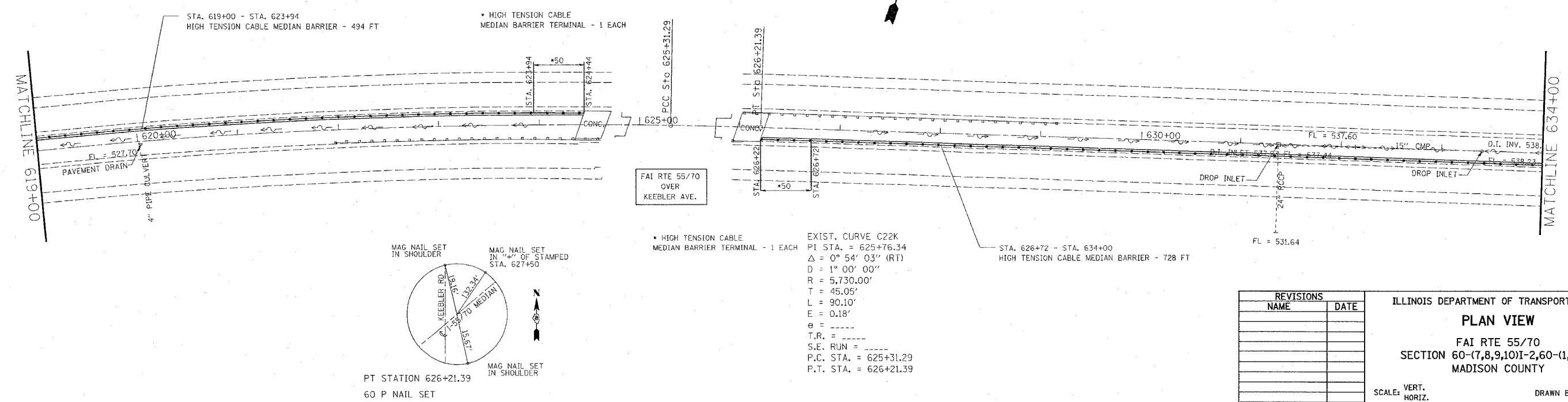
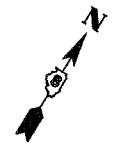


F.A.I. RTE.	SECTION	COUNTY	TOTAL SHEETS	SHEET NO.
55/70		MADISON	26	9
STA. 604+00		TO STA. 634+00		
FED. ROAD DIST. NO.		ILLINOIS FED. AID PROJECT		
*60-(7,8,9,10)I-2,60-(1,2)I-3				

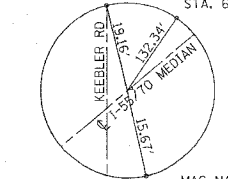


EXIST. CURVE C2K
 PI STA. = 609+34.00
 $\Delta = 32^\circ 52' 34''$ (RT)
 $D = 1^\circ 00' 00''$
 $R = 5,730.00'$
 $T = 1,690.57'$
 $L = 3,287.85'$
 $E = 244.19'$
 $\phi = \text{-----}$
 $T.R. = \text{-----}$
 $S.E. \text{ RUN} = \text{-----}$
 $P.C. \text{ STA.} = 592+43.44$
 $P.T. \text{ STA.} = 625+31.29$



STA. 619+00 - STA. 623+94
 HIGH TENSION CABLE
 MEDIAN BARRIER - 494 FT

MAG. NAIL SET
 IN SHOULDER
 STA. 627+50



PT STATION 626+21.39
 60 P NAIL SET

• HIGH TENSION CABLE
 MEDIAN BARRIER TERMINAL - 1 EACH

FAI RTE 55/70
 OVER
 KEEBLER AVE.

• HIGH TENSION CABLE
 MEDIAN BARRIER TERMINAL - 1 EACH

EXIST. CURVE C22K
 PI STA. = 625+76.34
 $\Delta = 0^\circ 54' 03''$ (RT)
 $D = 1^\circ 00' 00''$
 $R = 5,730.00'$
 $T = 45.05'$
 $L = 90.10'$
 $E = 0.18'$
 $\phi = \text{-----}$
 $T.R. = \text{-----}$
 $S.E. \text{ RUN} = \text{-----}$
 $P.C. \text{ STA.} = 625+31.29$
 $P.T. \text{ STA.} = 626+21.39$

STA. 626+72 - STA. 634+00
 HIGH TENSION CABLE MEDIAN BARRIER - 728 FT

REVISIONS	
NAME	DATE

ILLINOIS DEPARTMENT OF TRANSPORTATION
PLAN VIEW
 FAI RTE 55/70
 SECTION 60-(7,8,9,10)I-2,60-(1,2)I-3
 MADISON COUNTY

SCALE: VERT.
 HORIZ.
 DATE

DRAWN BY
 CHECKED BY

PLOT DATE = 12/11/2006
 FILE NAME = c:\pvc\acis\ad\060803\plan\p060803.dgn
 PLOT SCALE = 50.0000 / 1" = 100.0000'
 REFERENCE = SHEET #