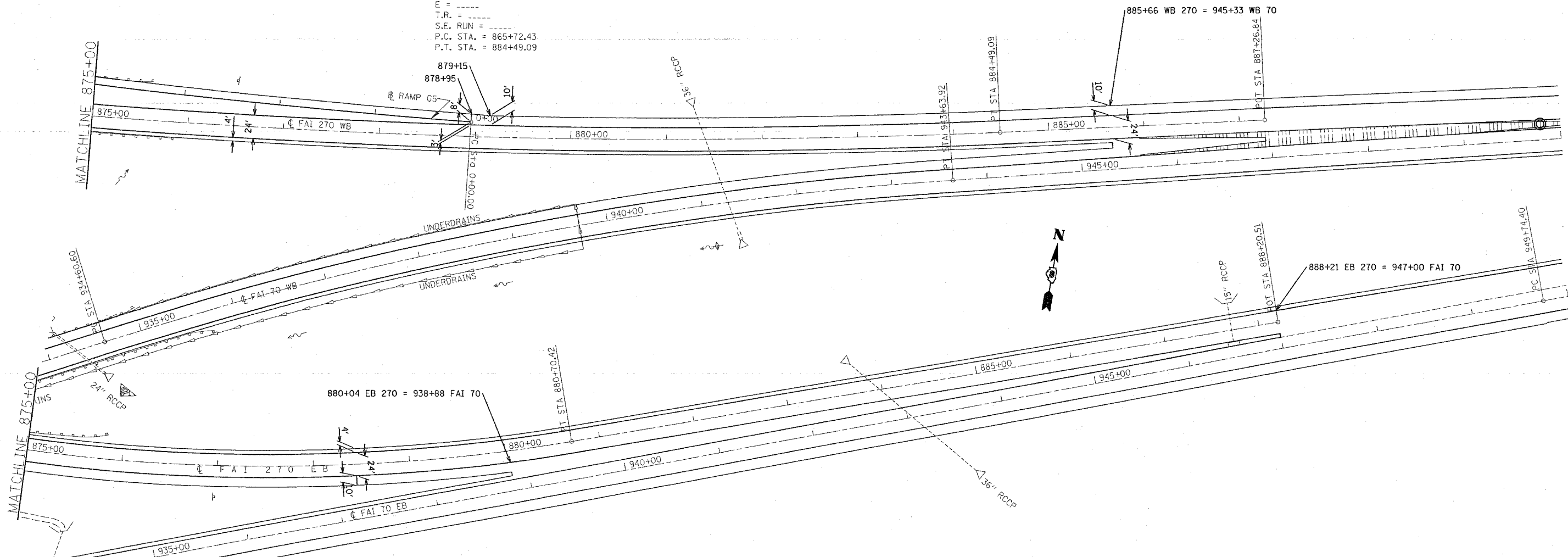


F.A.I. RTE.	SECTION	COUNTY	TOTAL SHEETS	SHEET NO.
70	60-(10,11)RS	MADISON	56	35
STA. _____		TO STA. _____		
FED. ROAD DIST. NO. _____ ILLINOIS FED. AID PROJECT _____				

EXIST. CURVE WBAI27-2  
 PI STA. = 875+15.50  
 $\Delta = 14^\circ 04' 30''$  (LT)  
 $D = 0^\circ 45' 00''$   
 $R = 7,639.44'$   
 $T = 943.08'$   
 $L = 1,876.66'$   
 $E = 57.99'$   
 $T.R. = \text{---}$   
 $S.E. RUN = \text{---}$   
 $P.C. STA. = 865+72.43$   
 $P.T. STA. = 884+49.09$



EXIST. CURVE EBFAI27-2  
 PI STA. = 875+61.15  
 $\Delta = 31^\circ 21' 50''$  (LT)  
 $D = 3^\circ 00' 00''$   
 $R = 1,909.86'$   
 $T = 536.19'$   
 $L = 1,045.46'$   
 $E = 73.84'$   
 $T.R. = \text{---}$   
 $S.E. RUN = \text{---}$   
 $P.C. STA. = 870+24.96$   
 $P.T. STA. = 880+70.42$

PLOT DATE = 04/28/08  
 FILE NAME = 041111  
 PLOT SCALE = 1/8"=1'-0"  
 REFERENCE = 7/18/07

REVISIONS	
NAME	DATE

ILLINOIS DEPARTMENT OF TRANSPORTATION  
**PLAN VIEW**  
**EASTBOUND AND WESTBOUND 270**  
 FAI 70  
 SECTION 60-(10,11)RS  
 MADISON COUNTY

SCALE: VERT. \_\_\_\_\_  
 HORIZ. \_\_\_\_\_  
 DATE \_\_\_\_\_  
 DRAWN BY \_\_\_\_\_  
 CHECKED BY \_\_\_\_\_