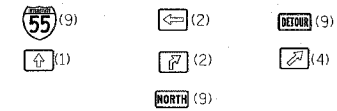
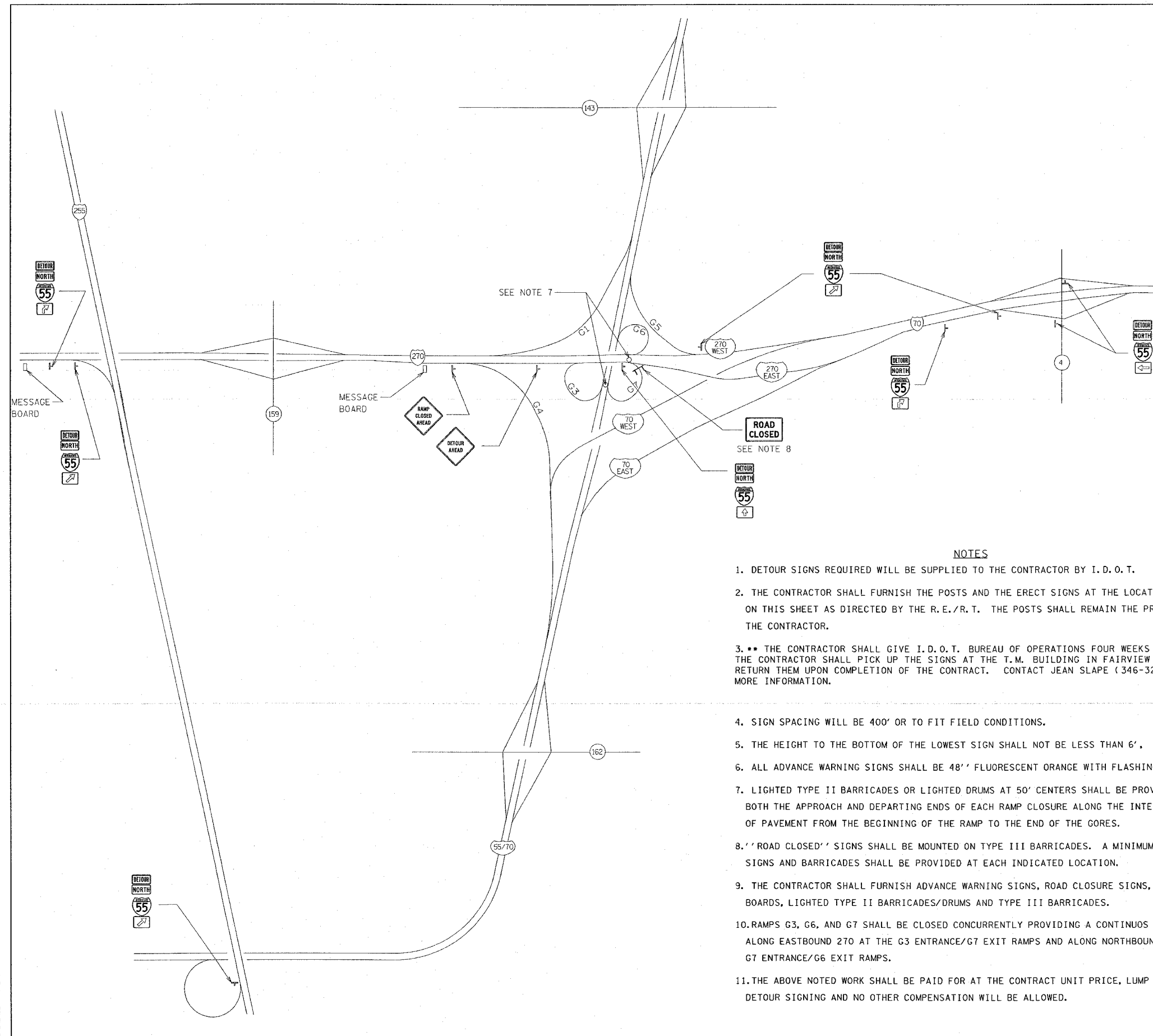


F.A.I. RTE.	SECTION	COUNTY	TOTAL SHEETS	SHEET NO.
70	60-(10,11)RS	MADISON	156	51
STA. _____		TO STA. _____		
FED. ROAD DIST. NO. _____		ILLINOIS FED. AID PROJECT		

SIGNS TO BE SUPPLIED BY I.D.O.T.



SIGNS TO BE SUPPLIED BY CONTRACTOR



NOTES

1. DETOUR SIGNS REQUIRED WILL BE SUPPLIED TO THE CONTRACTOR BY I. D. O. T.
2. THE CONTRACTOR SHALL FURNISH THE POSTS AND THE ERECT SIGNS AT THE LOCATION SHOWN ON THIS SHEET AS DIRECTED BY THE R.E./R.T. THE POSTS SHALL REMAIN THE PROPERTY OF THE CONTRACTOR.
3. ** THE CONTRACTOR SHALL GIVE I.D.O.T. BUREAU OF OPERATIONS FOUR WEEKS NOTICE FOR SIGNS. THE CONTRACTOR SHALL PICK UP THE SIGNS AT THE T.M. BUILDING IN FAIRVIEW HEIGHTS AND RETURN THEM UPON COMPLETION OF THE CONTRACT. CONTACT JEAN SLAPE (346-3289) FOR MORE INFORMATION.
4. SIGN SPACING WILL BE 400' OR TO FIT FIELD CONDITIONS.
5. THE HEIGHT TO THE BOTTOM OF THE LOWEST SIGN SHALL NOT BE LESS THAN 6'.
6. ALL ADVANCE WARNING SIGNS SHALL BE 48" FLUORESCENT ORANGE WITH FLASHING LIGHTS.
7. LIGHTED TYPE II BARRICADES OR LIGHTED DRUMS AT 50' CENTERS SHALL BE PROVIDED AT BOTH THE APPROACH AND DEPARTING ENDS OF EACH RAMP CLOSURE ALONG THE INTERSTATE EDGE OF PAVEMENT FROM THE BEGINNING OF THE RAMP TO THE END OF THE GOES.
8. "ROAD CLOSED" SIGNS SHALL BE MOUNTED ON TYPE III BARRICADES. A MINIMUM OF THREE SIGNS AND BARRICADES SHALL BE PROVIDED AT EACH INDICATED LOCATION.
9. THE CONTRACTOR SHALL FURNISH ADVANCE WARNING SIGNS, ROAD CLOSURE SIGNS, MESSAGE BOARDS, LIGHTED TYPE II BARRICADES/DRUMS AND TYPE III BARRICADES.
10. RAMPS G3, G6, AND G7 SHALL BE CLOSED CONCURRENTLY PROVIDING A CONTINUOUS CLOSURE ALONG EASTBOUND 270 AT THE G3 ENTRANCE/G7 EXIT RAMPS AND ALONG NORTHBOUND 55 AT THE G7 ENTRANCE/G6 EXIT RAMPS.
11. THE ABOVE NOTED WORK SHALL BE PAID FOR AT THE CONTRACT UNIT PRICE, LUMP SUM FOR DETOUR SIGNING AND NO OTHER COMPENSATION WILL BE ALLOWED.

PLOT DATE = *DATE*
 FILE NAME = *FILE*
 PLOT SCALE = *SCALE*
 REFERENCE = *REF*

REVISIONS	
NAME	DATE

ILLINOIS DEPARTMENT OF TRANSPORTATION
DETOUR PLAN
RAMP G7
 FAI ROUTE 70
 SECTION 60-(10,11)RS
 MADISON COUNTY

SCALE: VERT. _____
 HORIZ. _____
 DATE _____

DRAWN BY _____
 CHECKED BY _____