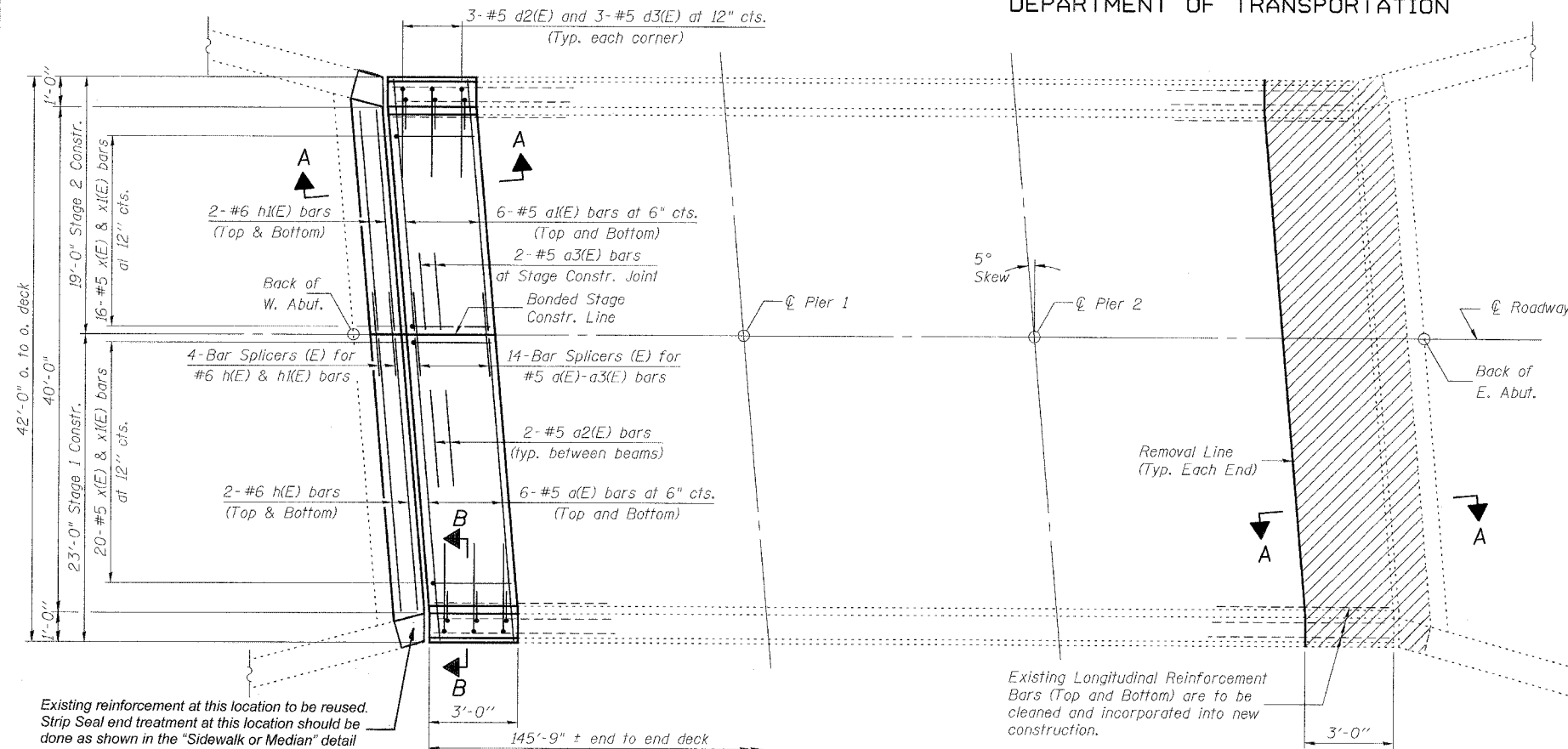


STATE OF ILLINOIS
DEPARTMENT OF TRANSPORTATION

SHEET 3
OF 9

F.A.I. RTE.	SECTION	COUNTY	TOTAL SHEETS	SHEET NO.
70	60-10B	MADISON	156	100
FED. ROAD DIST. NO.	ILLINOIS	FED. AID PROJECT	CONTRACT NO. 76857	

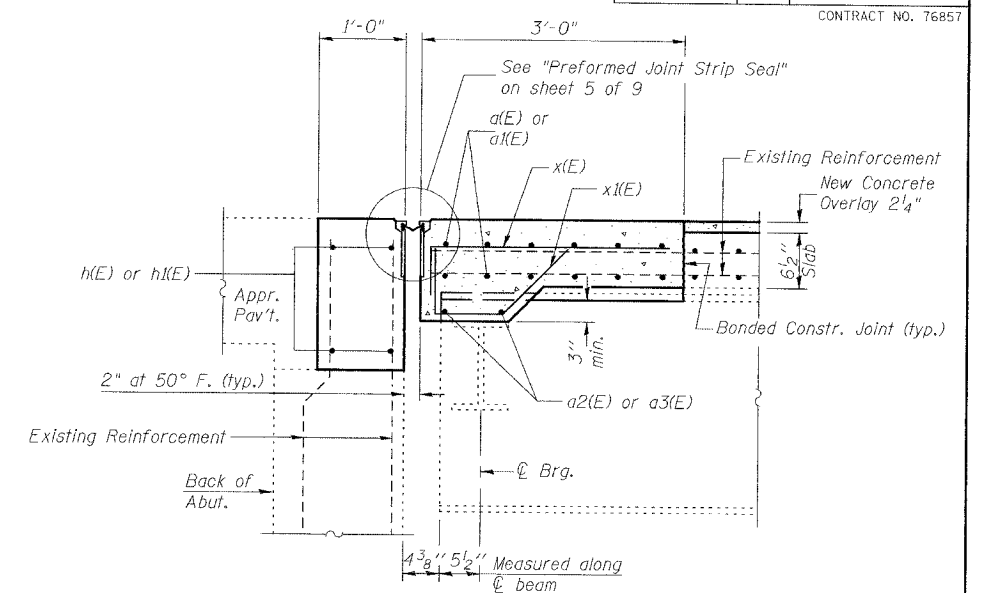


NEW CONSTRUCTION
(Typical Each End of Deck)

PLAN

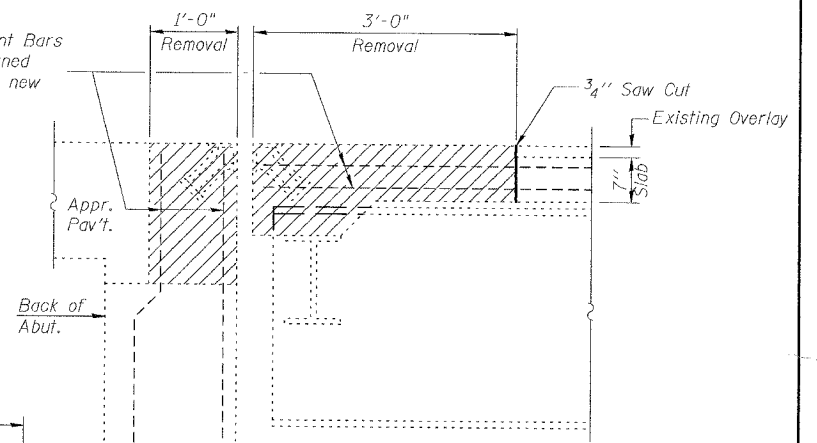
CONCRETE REMOVAL
(Typical Each End of Deck)

Indicates Limits of Concrete Removal.



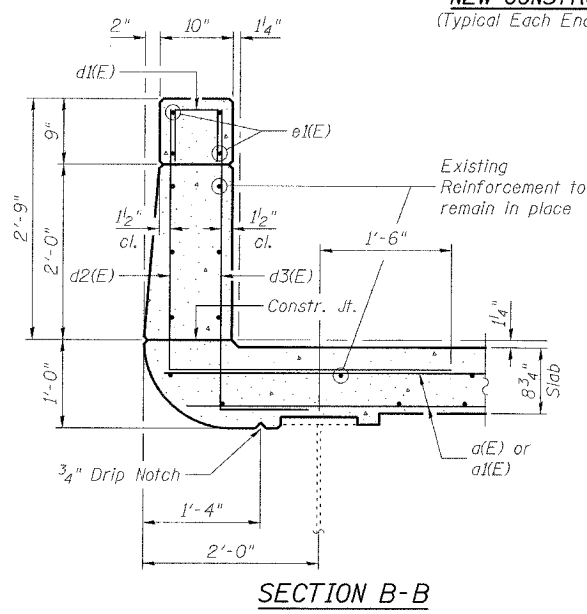
PROPOSED SECTION A-A

Existing Reinforcement Bars shown are to be cleaned and incorporated into new construction.

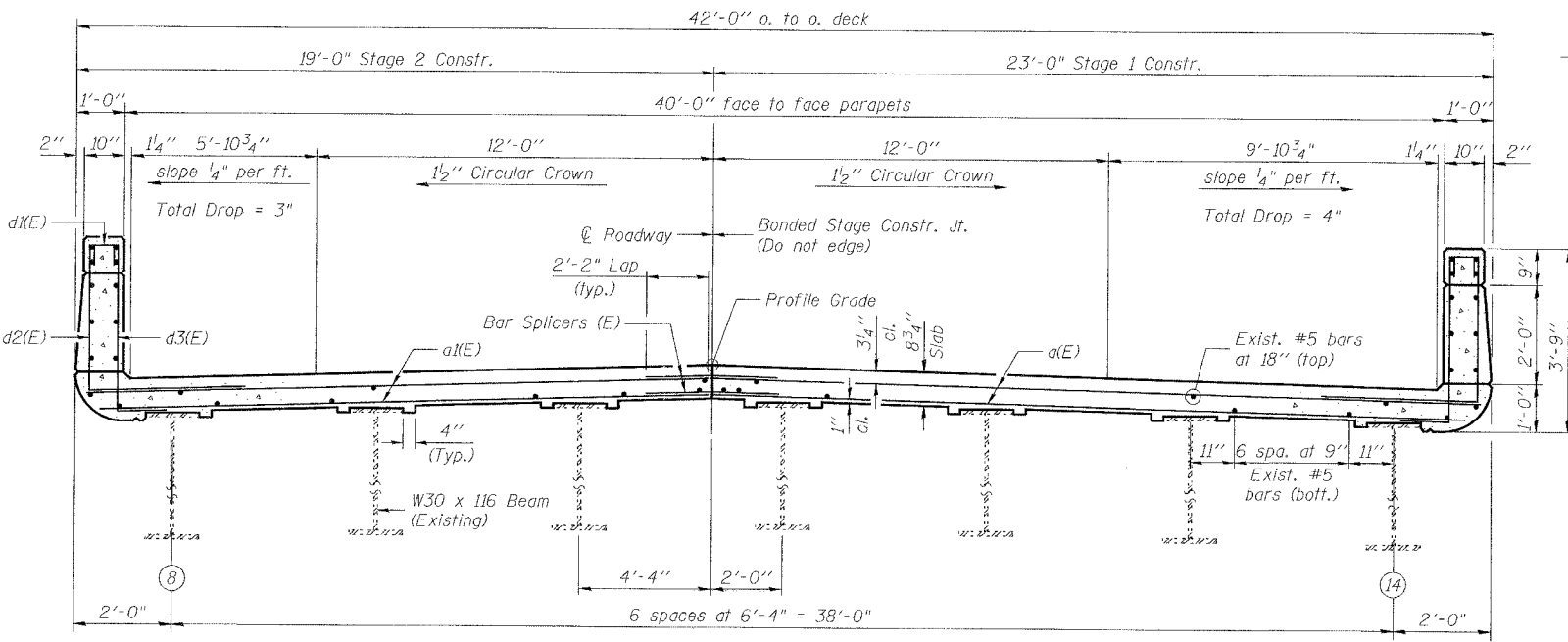


EXISTING SECTION A-A

Note:
Existing longitudinal reinforcement bars projecting from the deck and parapets are to remain in place. The existing reinforcement shall be cleaned, straightened and incorporated into the new construction. Cut the existing reinforcement as required so that it will end 2" from the edge of the new deck. Any reinforcement bars damaged during concrete removal shall be replaced with an approved bar splicer or anchorage system. Cost included with Concrete Removal.



SECTION B-B



CROSS SECTION AT END OF DECK
(Looking East)

JD Johnson, Depp & Quisenberry
CONSULTING ENGINEERS
Springfield, Illinois

DESIGNED: CDB	DRAWN: P. Ray
CHECKED: DCD	CHECKED: CDB/DCD

SUPERSTRUCTURE
FAI 70 (EB) OVER
WENDELL BRANCH
FAI ROUTE 70 SECTION 60-10B
MADISON COUNTY
STATION 996+73.85
STRUCTURE NO. 060-0023

FILE: J:\JDD\10142 IL-08VVV5 I-70 Bridge Repairs\2-SN060-0023 Wendell\EB-03superstr.dgn
 USER: DCD
 DATE: 01/22/2007 16:40:14