

STATE OF ILLINOIS  
DEPARTMENT OF TRANSPORTATION

INDEX OF SHEETS

SHEET 1  
OF 9

F.A.I. RTE.	SECTION	COUNTY	TOTAL SHEETS	SHEET NO.
TO	60-10B	MADISON	156	108
FED. ROAD DIST. NO.	ILLINOIS	FED. AID PROJECT	CONTRACT NO. 76857	

Sheet No.	Description
1	Gen. Plan, Gen. Notes & Total Bill of Mat'l
2	Deck Plan
3	Superstructure
4	Superstructure Details
5	Preformed Joint Strip Seal
6	Abutment Bearings
7	Pier Bearings
8	Anchor Bolts
9	Bar Splicer Details

GENERAL NOTES

Plan dimensions and details relative to existing plans are subject to routine variations. The Contractor shall field verify existing dimensions and details affecting new construction and make necessary approved adjustments prior to construction or ordering of materials. Such variations shall not be cause for additional compensation for a change in scope of the work, however, the Contractor will be paid for the quantity actually furnished based upon the unit price bid for the work.

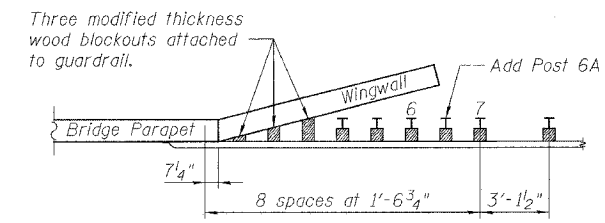
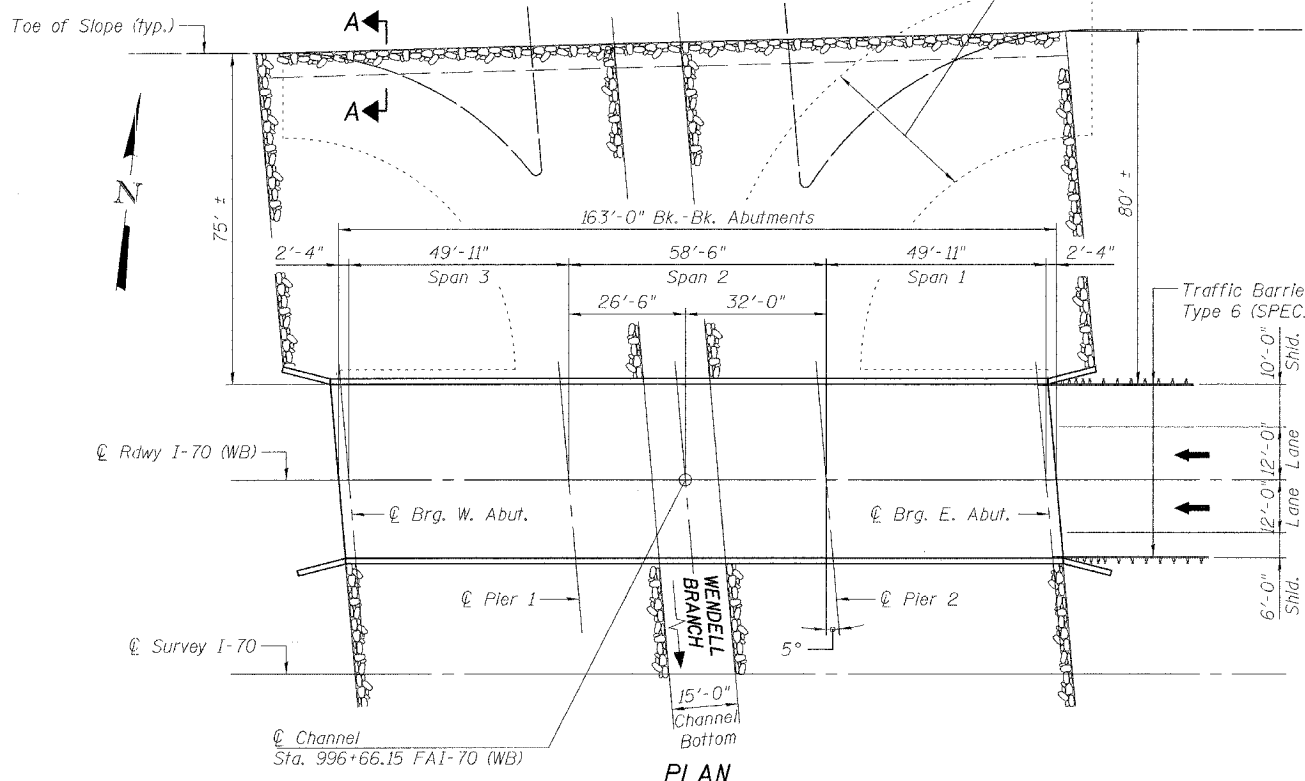
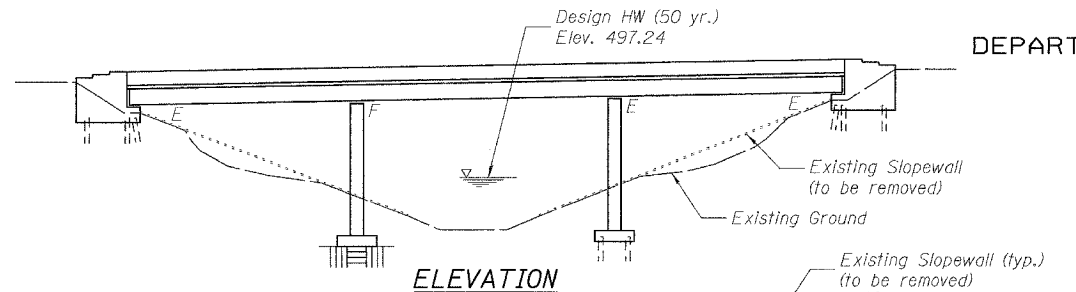
All epoxy grouted bars shall have a minimum embedment as shown on the plans and shall be placed according to Section 584 of the Standard Specifications. Cost of hole drilling and epoxy grouting is included with "Reinforcement Bars, Epoxy Coated".

All structural steel shall be AASHTO M 270 Grade 36, unless noted otherwise. Field welding of construction accessories will not be permitted to beams or girders.

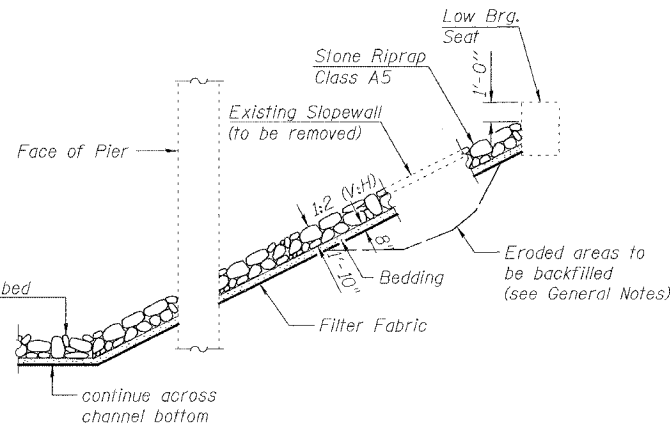
The existing structural steel coating contains lead. The Contractor shall take appropriate precautions to deal with the presence of lead on this project.

The existing structural steel shall only be cleaned and painted as required by the Special Provision "Cleaning and Painting Contact Surface Areas of Existing Steel Structures". All new structural steel shall be shop painted with an inorganic zinc rich primer per AASHTO M300, Type 1. Field painting of structural steel shall be done under a separate painting contract.

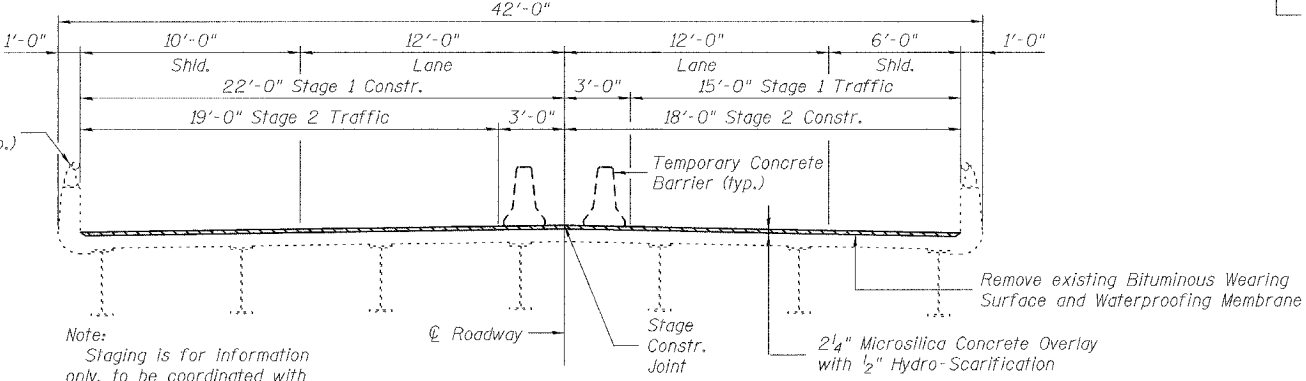
Prior to pouring the new concrete deck, all loose rust, loose mill scale and other loose potentially detrimental foreign material shall be removed from the surfaces of the beams or girders in contact with concrete. The cost of this work will be included in the pay item covering removal of the existing concrete. All heavy rust and other tightly adhered potentially detrimental foreign matter shall also be removed from the surfaces of the beams or girders in contact with concrete. Tightly adhered paint may remain unless otherwise noted. This removal shall be accomplished by methods that will not damage the steel. The cost of this work will be paid for according to Article 109.04 of the Standard Specifications.



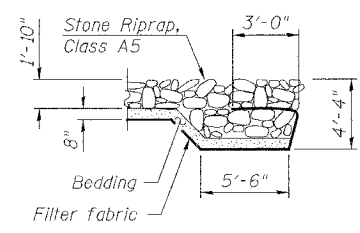
TRAFFIC BARRIER TERMINAL  
TYPE 6 (SPECIAL)



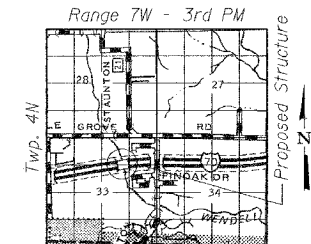
STONE RIPRAP DETAIL



CROSS SECTION  
(Looking East)



SECTION A-A



LOCATION SKETCH

TOTAL BILL OF MATERIAL

ITEM	UNIT	SUPER	SUB	TOTAL
Furnished Excavation	Cu Yd	--	25	25
Stone Riprap, Class A5	Sq Yd	--	2957	2957
Filter Fabric	Sq Yd	--	2957	2957
HMA Surface Removal (Deck)	Sq Yd	701	--	701
Concrete Removal	Cu Yd	12.2	--	12.2
Bridge Rail Removal	Foot	320	--	320
Slope Wall Removal	Sq Yd	--	2195	2195
Concrete Superstructure	Cu Yd	19.6	--	19.6
Bridge Deck Grooving	Sq Yd	672	--	672
Protective Coat	Sq Yd	854	--	854
Floor Drain Extension	Each	20	--	20
Furnishing And Erecting Structural Steel	Pound	3500	--	3500
Jack And Remove Existing Bearings	Each	21	--	21
Reinforcement Bars, Epoxy Coated	Pound	3400	--	3400
Bar Splicers	Each	28	--	28
Preformed Joint Strip Seal	Foot	84	--	84
Elastomeric Bearing Assembly, Type I	Each	21	--	21
Anchor Bolts, 1"	Each	42	--	42
Plug Existing Deck Drains	Each	32	--	32
Bridge Deck Microsilica Concrete Overlay 2 1/4"	Sq Yd	684	--	684
Bridge Deck Hydro-Scarification 1/2"	Sq Yd	684	--	684
Deck Slab Repair (Full Depth, Type II)	Sq Yd	9	--	9

GENERAL PLAN  
FAI 70 (WB) OVER  
WENDELL BRANCH  
FAI ROUTE 70 SECTION 60-10B  
MADISON COUNTY  
STATION 996+66.15  
STRUCTURE NO. 060-0024

FILE: J:\JDD\10142 IL-DBV\45 I-70 Bridge Repairs\3-SN060-0024 WendellBr-WB-01plan.dgn  
USER: DCD  
DATE: 01/12/2007 11:18:57

**JD Johnson, Depp & Quisenberry**  
CONSULTING ENGINEERS  
Springfield, Illinois

DESIGNED: CDB	DRAWN: SJS
CHECKED: DCD	CHECKED: CDB/DCD



Signed: *David Depp*  
Date: 1-15-2007  
Lic. Expires: 11-30-2008