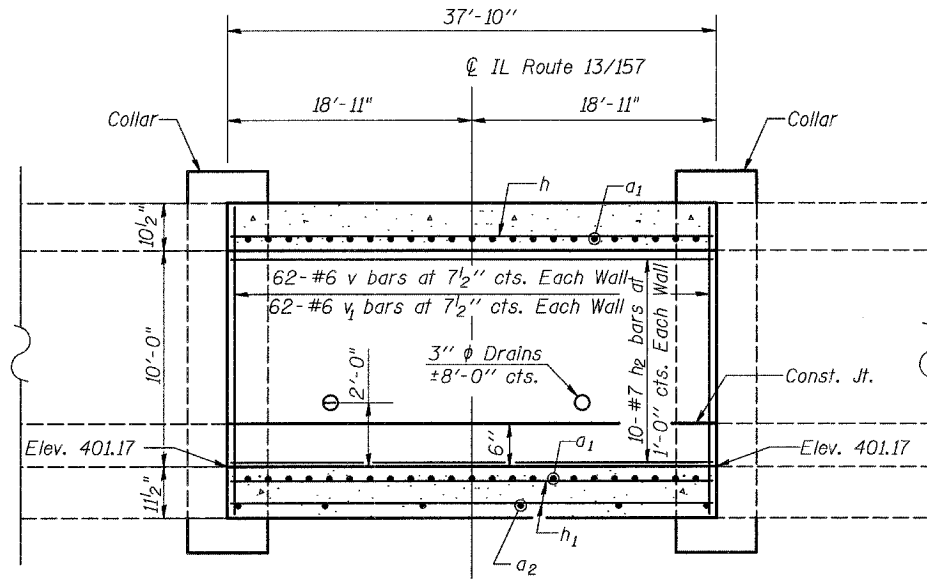


STATE OF ILLINOIS
DEPARTMENT OF TRANSPORTATION

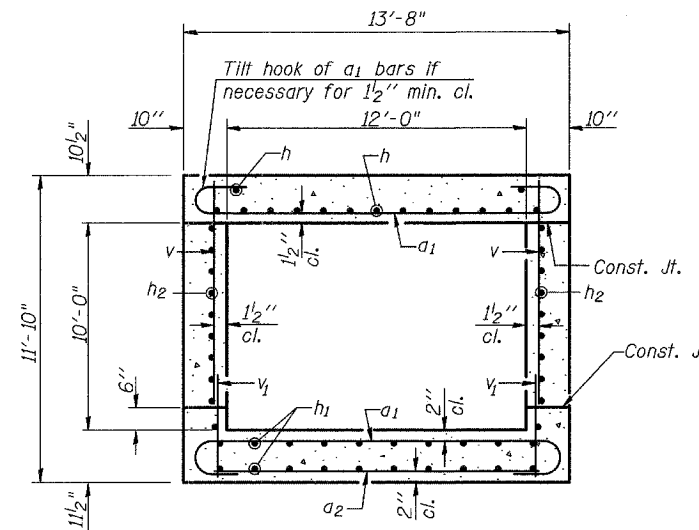
ROUTE NO.	SECTION	COUNTY	TOTAL SHEETS	SHEET NO.
FAP 592	28BR-2 28BR-3	ST. CLAIR	51	26
FED. ROAD DIST. NO. 7	ILLINOIS	FED. AID PROJECT-		

SHEET NO. 3
7 SHEETS

Contract #76904



LONG. SECTION- CENTER SECTION

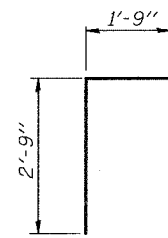


SECTION THRU BARREL

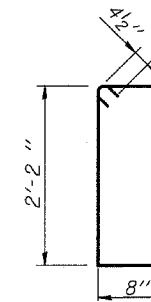
BILL OF MATERIAL

(Total for 3-Sections and 2-Collars)

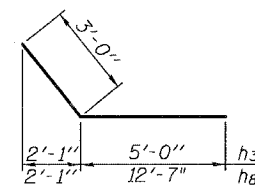
Bar	No.	Size	Length	Shape
a ₁	426	#9	15'-10"	U
a ₂	59	#4	12'-3"	—
b	20	#8	14'-0"	┌
b ₁	20	#8	15'-8"	┌
b ₂	20	#8	4'-10"	┌
b ₃	18	#8	15'-5"	—
b ₄	10	#8	22'-7"	┌
d	26	#4	4'-6"	┌
h	42	#7	37'-6"	—
h ₁	78	#5	37'-6"	—
h ₂	60	#7	37'-6"	—
h ₃	128	#7	8'-0"	┌
h ₄	4	#6	12'-11"	—
h ₈	80	#7	15'-7"	┌
s	112	#4	6'-5"	□
v	376	#6	10'-3"	—
v ₁	372	#6	2'-7"	—
v ₂	16	#4	14'-4"	—
Concrete Box Culverts			Cu. Yd.	212.1
Reinforcement Bars			Pound	50,130



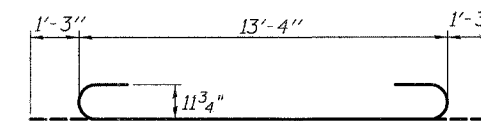
BAR d



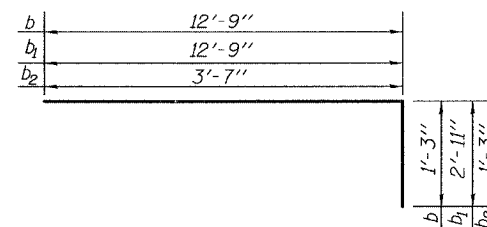
BAR s



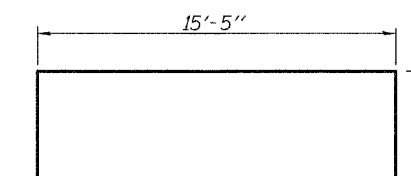
BARS h₃ & h₈



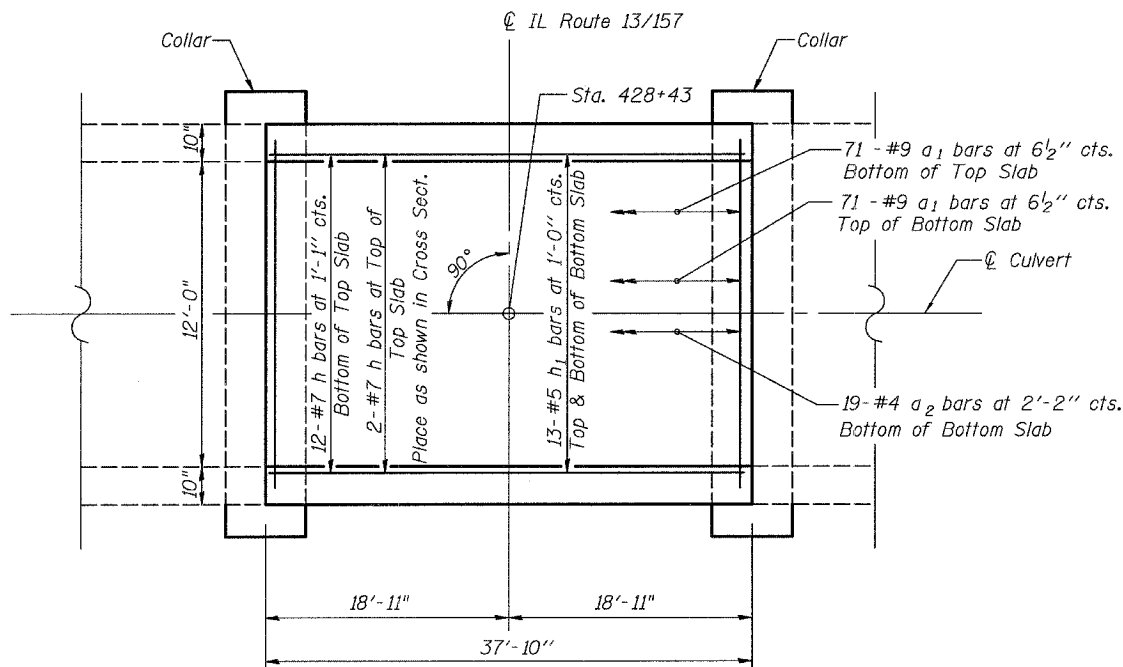
BAR a₁



BARS b, b₁ & b₂



BAR b₄



PLAN- CENTER SECTION

Notes:
① See Sheet 4 of 7 for concrete collar details.

CULVERT DETAILS
IL ROUTE 13/157 OVER CANAL NO. 1
ST. CLAIR COUNTY
STA. 428+43
STRUCTURE NO. 082-2568