

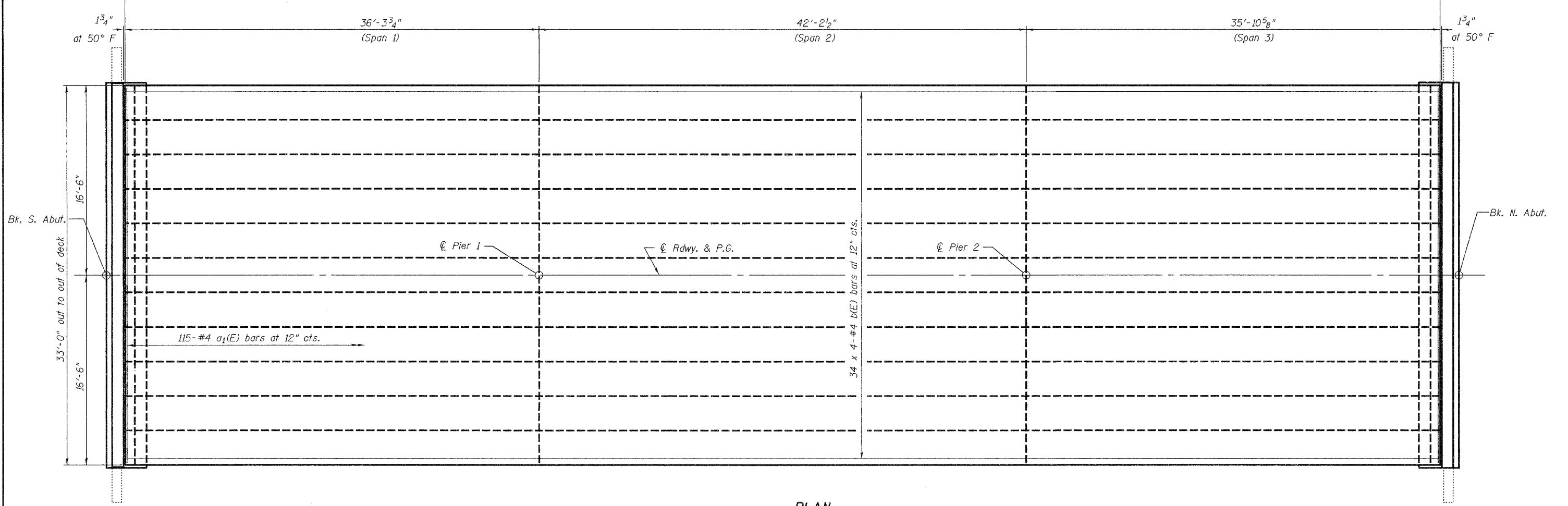
STATE OF ILLINOIS
DEPARTMENT OF TRANSPORTATION

ROUTE NO.	SECTION	COUNTY	TOTAL SHEETS	SHEET NO.	SHEET NO. 3 21 SHEETS
F.A.P. 592	28BR-2	ST. CLAIR	51	33	
FED. ROAD DIST. NO. 7	ILLINOIS	FED. AID PROJECT			

MIN. BAR LAP

#4 bar = 1'-8"

114'-4⁷/₈" End to End of Deck



PLAN

Notes:

Reinforcement bars designated (E) shall be epoxy coated.
Bars indicated thus 32 x 4-#4 etc. indicates 32 lines of bars with 4 lengths per line.
For remainder of superstructure details, see sheets 4, 5, 6, and 7 of 21.

DESIGNED	ADL
CHECKED	WLW
DRAWN	RJP
CHECKED	ADL

SUPERSTRUCTURE
F.A.P. ROUTE 592 - SECTION 28BR-2
ST. CLAIR COUNTY
STATION 437+31.90
STRUCTURE NO. 082-0212

\$DATE\$

\$FILE\$