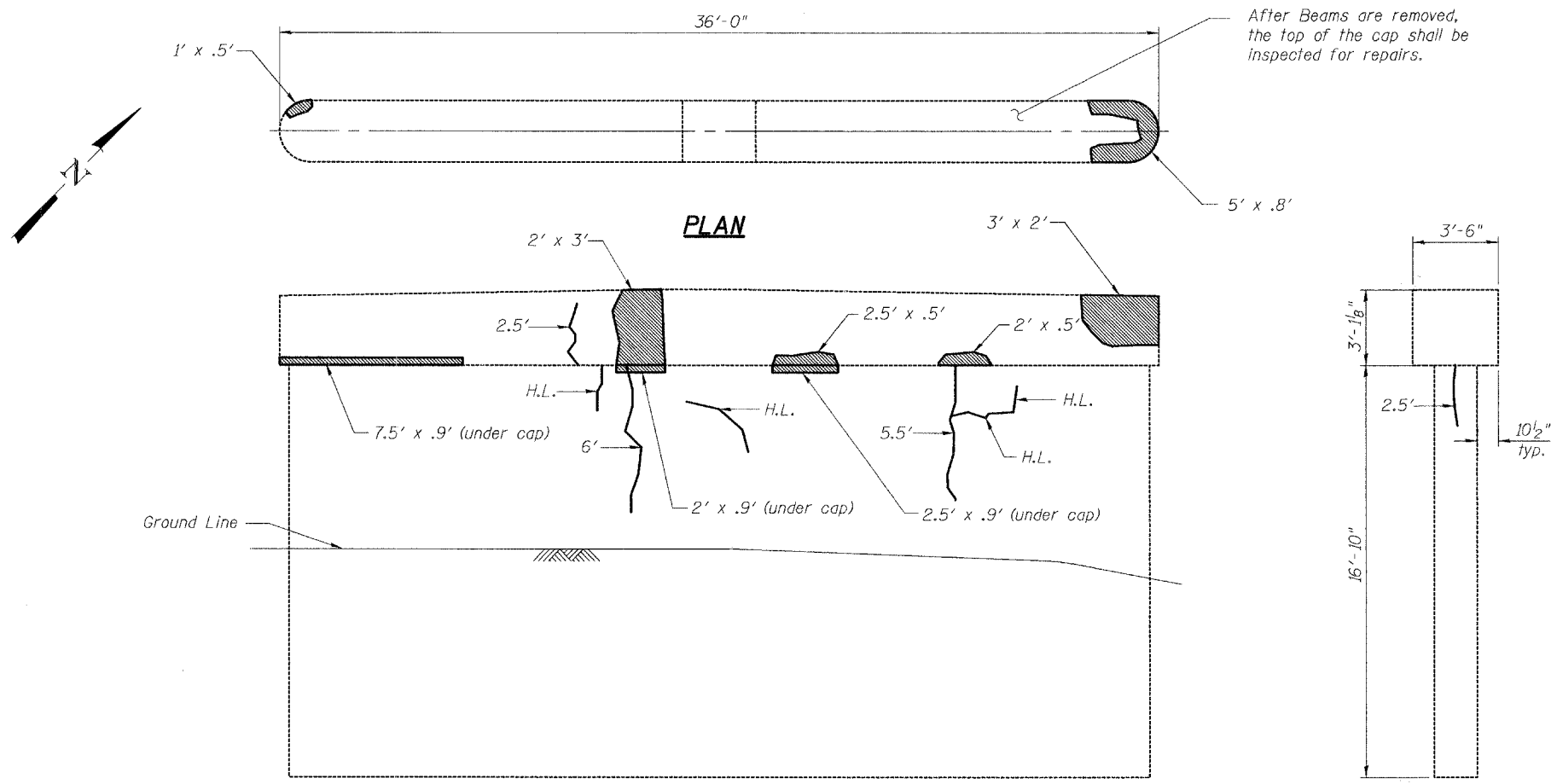
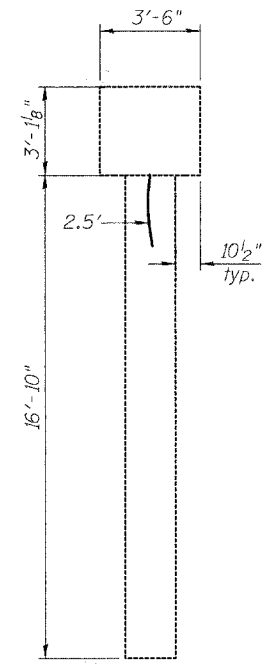


STATE OF ILLINOIS  
DEPARTMENT OF TRANSPORTATION

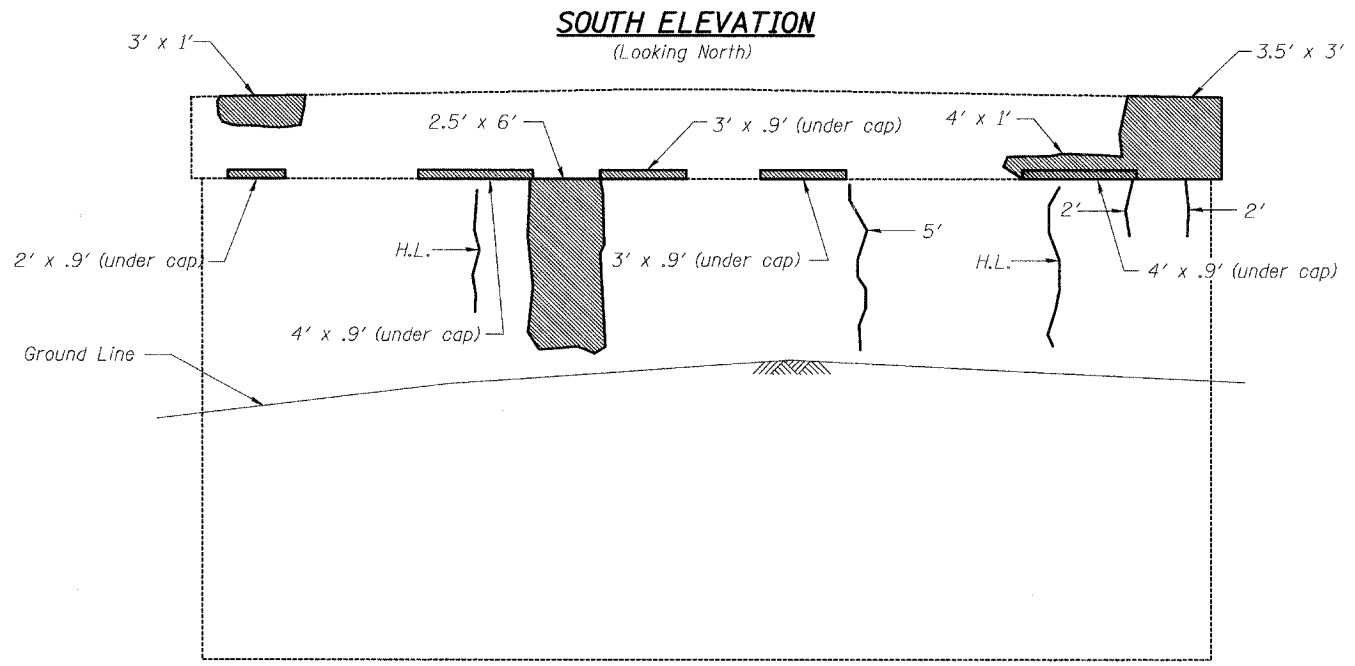
ROUTE NO.	SECTION	COUNTY	TOTAL SHEETS	SHEET NO.	SHEET NO. 14 21 SHEETS
F.A.P. 592	28BR-2	ST. CLAIR	51	44	
FED. ROAD DIST. NO. 7		ILLINOIS	FED. AID PROJECT		



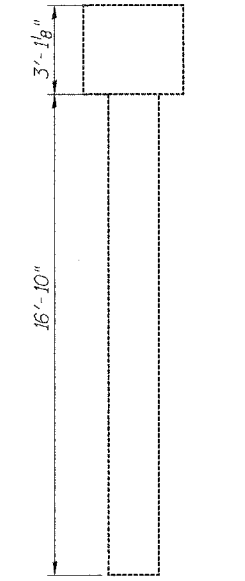
**PLAN**



**WEST END VIEW**  
(Looking East)



**SOUTH ELEVATION**  
(Looking North)



**EAST END VIEW**  
(Looking West)

**NORTH ELEVATION**  
(Looking South)

Note:  
\*Only cracks equal to or wider than 1/8" shall be sealed with "Epoxy Crack Sealing"

**BILL OF MATERIAL**

Item	Unit	Total
* Epoxy Crack Sealing	Foot	26
Structural Repair of Concrete (Depth equal to or less than 5 in.)	Sq. Ft.	76

**LEGEND**

- Formed Concrete Repair (Depth equal to or less than 5")
- \* 6' Epoxy Crack Sealing
- H.L. Hairline Crack - Not to be sealed

Note: Crack widths are 1/8" ± 1/16" unless otherwise noted.

**PIER 2 REPAIRS**  
**F.A.P. ROUTE 592 - SECTION 28BR-2**  
**ST. CLAIR COUNTY**  
**STATION 437+31.90**  
**STRUCTURE NO. 082-0212**

DESIGNED	ADL
CHECKED	WLW
DRAWN	RJP
CHECKED	ADL

6/13/2006  
p:\02files\020409\020409-22 W0 Not1 IL13-157\SN 0920212.dgn