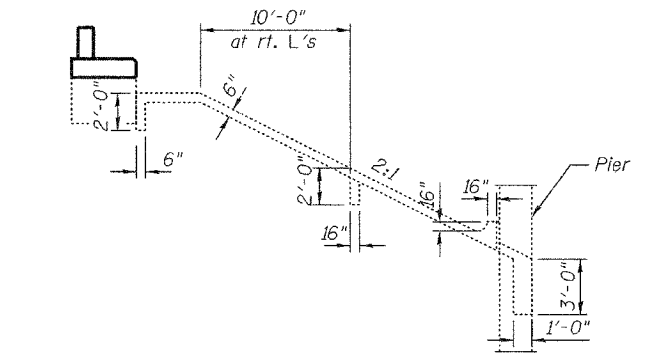
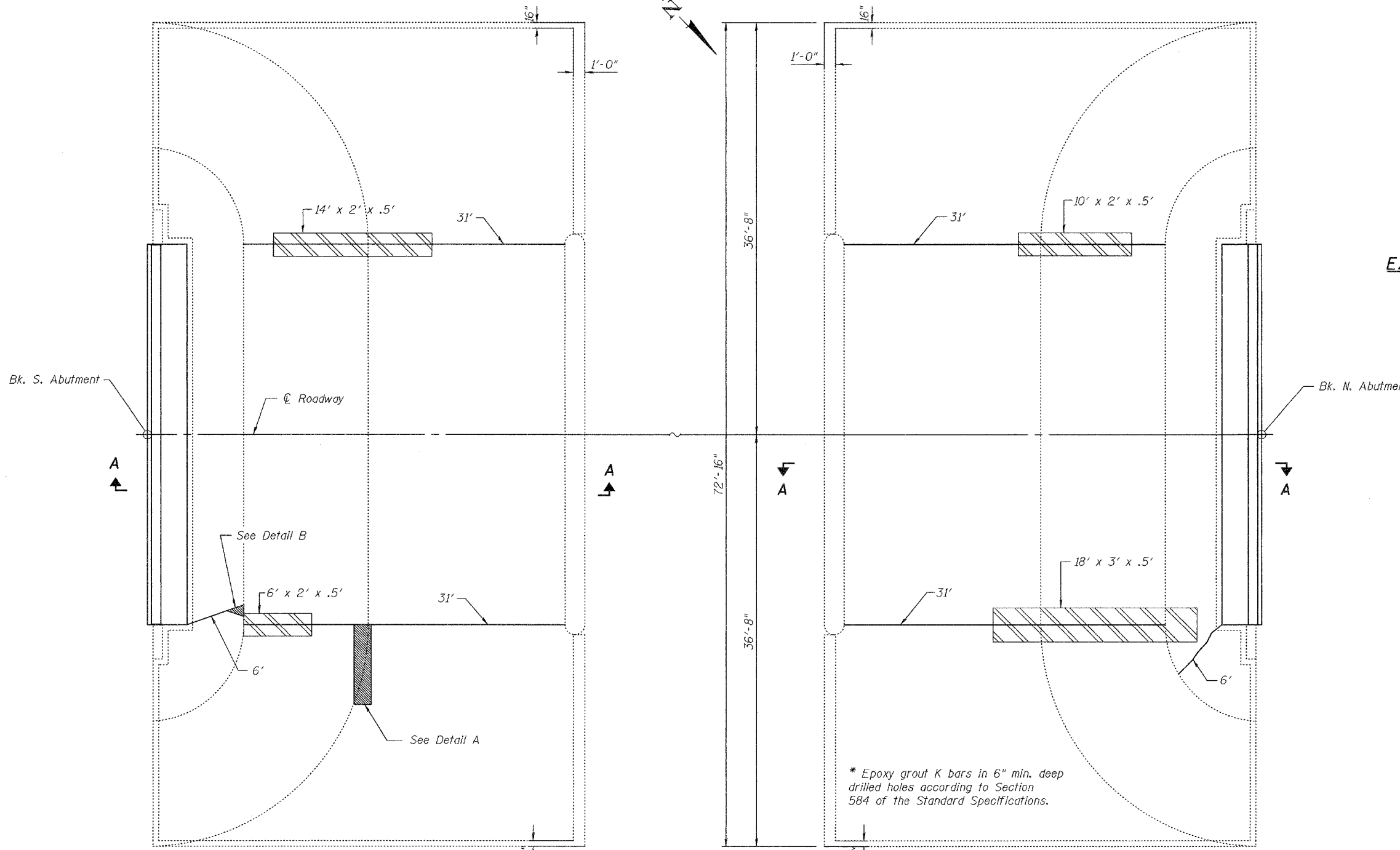


STATE OF ILLINOIS  
DEPARTMENT OF TRANSPORTATION

ROUTE NO.	SECTION	COUNTY	TOTAL SHEETS	SHEET NO.	SHEET NO. 15 21 SHEETS
F.A.P. 592	28BR-2	ST. CLAIR	51	45	
FED. ROAD DIST. NO. 7	ILLINOIS	FED. AID PROJECT			



EXISTING SLOPEWALL SECTION A-A

\* Epoxy grout K bars in 6" min. deep drilled holes according to Section 584 of the Standard Specifications.

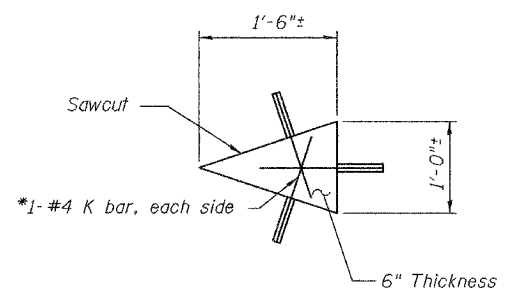
BAR LIST

Bar	No.	Size	Length	Shape
K	13	#4	1'-5"	—
K <sub>i</sub>	1	#4	6'-9"	—

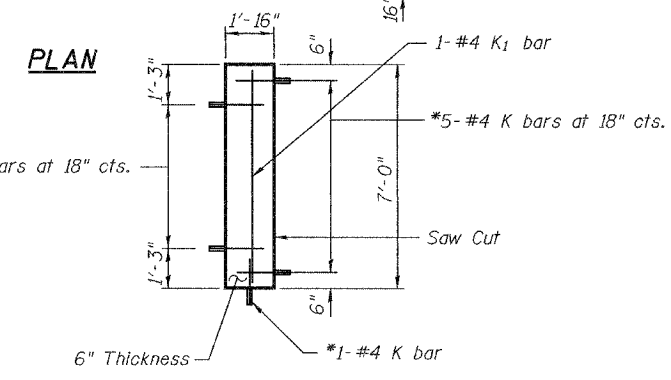
BILL OF MATERIAL

Item	Unit	Total
Slope Wall Crack Injection	Foot	136
Slope Wall Repair	Sq. Yd.	1
Controlled Low - Strength Material	Cu. Yd.	2.1

**SLOPE WALL REPAIRS**  
F.A.P. ROUTE 592 - SECTION 28BR-2  
ST. CLAIR COUNTY  
STATION 437+31.90  
STRUCTURE NO. 082-0212



DETAIL B



DETAIL A

LEGEND

- Slope Wall Repair
- Slope Wall Crack Sealing
- Controlled Low-Strength Material

Note: See Special Provisions for description of Slope Wall Repair, Slope Wall Crack Sealing, and Controlled Low-Strength Material.

DESIGNED	ADL
CHECKED	WLW
DRAWN	RJP
CHECKED	ADL

\$DATE\$

\$FILE\$