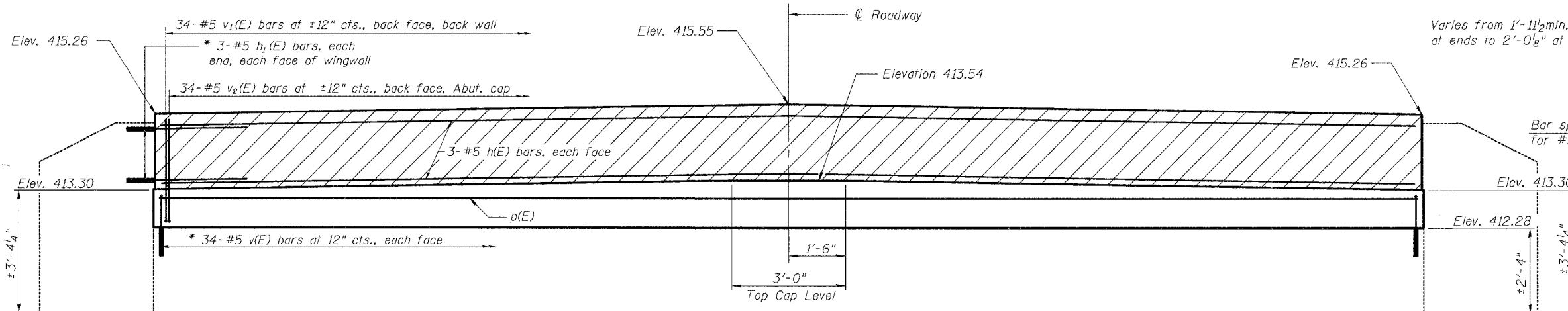
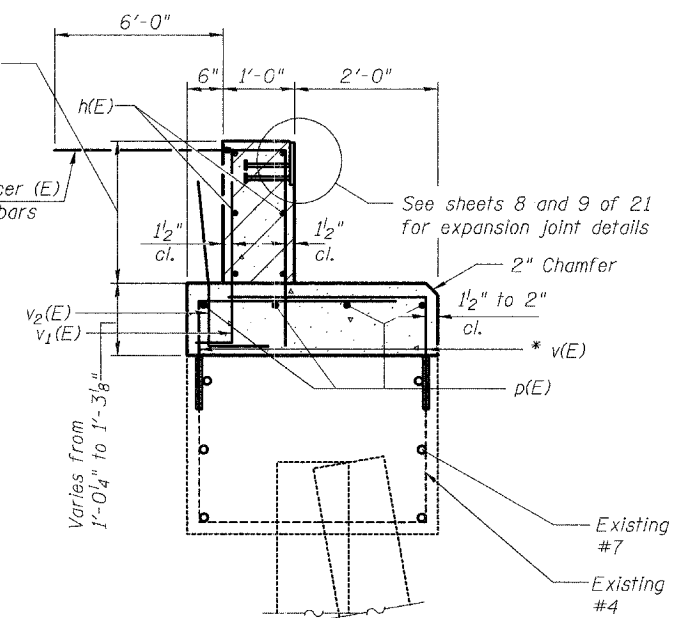


STATE OF ILLINOIS
DEPARTMENT OF TRANSPORTATION

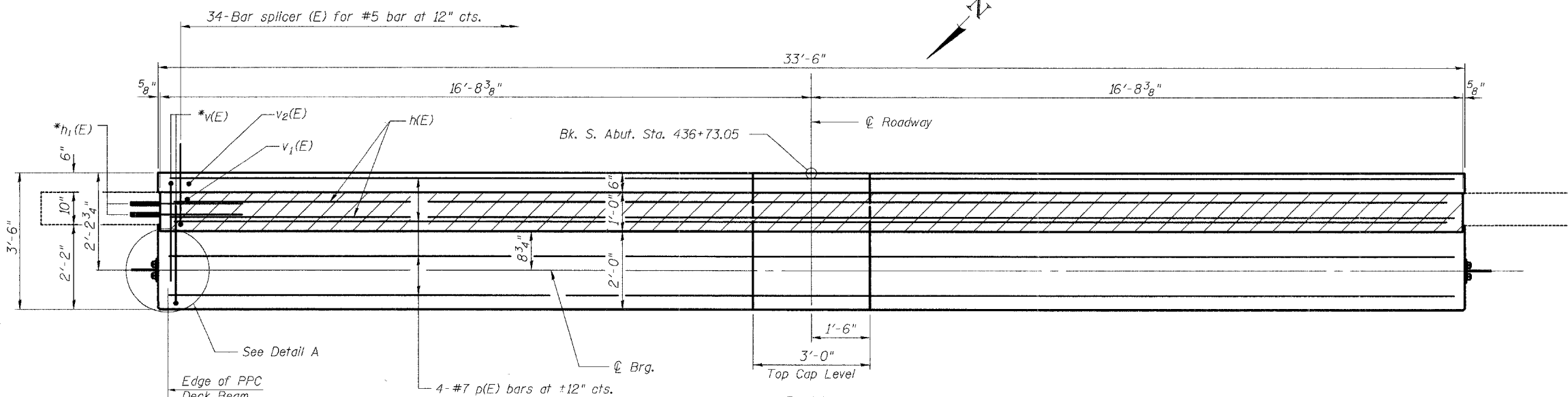
| | | | | | |
|-----------------------|----------|------------------|-------|-------|--------------|
| ROUTE NO. | SECTION | COUNTY | SHEET | SHEET | SHEET NO. 16 |
| F.A.P. 592 | 28BR-2 | ST. CLAIR | 51 | 46 | 21 SHEETS |
| FED. ROAD DIST. NO. 7 | ILLINOIS | FED. AID PROJECT | | | |



ELEVATION
(Looking South)



SECTION THRU ABUTMENT

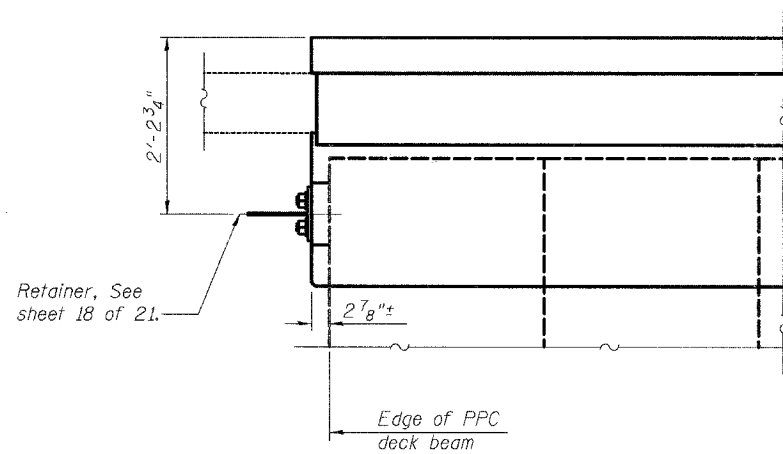


PLAN

* Epoxy grout $h_1(E)$, and $v(E)$ bars in 9" min. drilled holes according to Section 584 of the Standard Specifications.

Notes:

- Hatched area to be poured after Concrete Wearing Surface (including blackout) is in place and cured. Quantity of concrete included with Concrete Structures.
- Install Retainers and temporary wedges after beams are in place and before wearing surface is poured.
- Cost of Retainers, Temporary wedges and accessories are included with Precast Prestressed Concrete Deck Beams (17" Depth).
- After concrete wearing surface (including blackout) is poured and cured, the temporary wedges shall be removed. The Retainers with no wedges shall remain. Cost included with Precast Prestressed Concrete Deck Beams (17" Depth).
- For details of Bar Splicers, see sheet 21 of 21.
- See sheet 18 of 21 for Bend Details of Bars.



DETAIL A

BILL OF MATERIAL

| Bar | No. | Size | Length | Shape |
|----------------------------------|---------|------|--------|-------|
| $h(E)$ | 6 | #5 | 33'-2" | — |
| $h_1(E)$ | 12 | #5 | 3'-2" | — |
| $p(E)$ | 4 | #7 | 33'-2" | — |
| $v(E)$ | 68 | #5 | 4'-3" | — |
| $v_1(E)$ | 34 | #5 | 3'-6" | — |
| $v_2(E)$ | 34 | #5 | 3'-4" | — |
| Bar Splicers | Each | | 34 | |
| Concrete Structures | Cu. Yd. | | 7.5 | |
| Reinforcement Bars, Epoxy Coated | Pound | | 1060 | |

Reinforcement bars designated (E) shall be epoxy coated.

| | |
|----------|-----|
| DESIGNED | ADL |
| CHECKED | WLW |
| DRAWN | RJP |
| CHECKED | ADL |

SOUTH ABUTMENT
F.A.P. ROUTE 592 - SECTION 28BR-2
ST. CLAIR COUNTY
STATION 437+31.90
STRUCTURE NO. 082-0212

6/13/2006

p:\02files\020409\020409-22_W0_No11_IL13-157\SN_0212.dgn