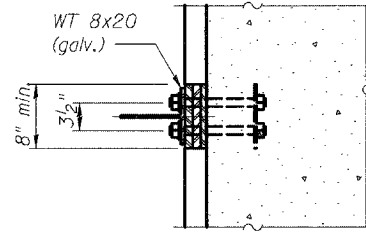
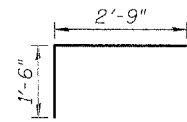


STATE OF ILLINOIS
DEPARTMENT OF TRANSPORTATION

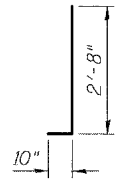
ROUTE NO.	SECTION	COUNTY	TOTAL SHEETS	SHEET NO.	SHEET NO. 18 21 SHEETS
F.A.P. 592	28BR-2	ST. CLAIR	51	48	
FED. ROAD DIST. NO. 7	ILLINOIS	FED. AID PROJECT			



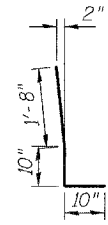
PLATE



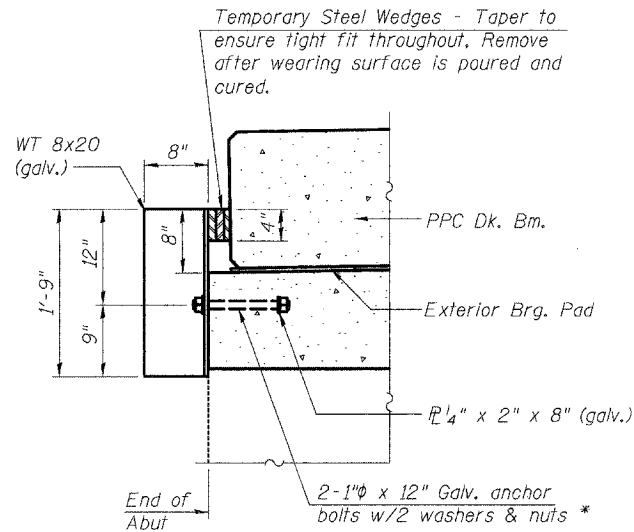
BAR V(E)



BAR V1(E)



BAR V2(E)



RETAINER DETAIL

* Anchor bolts may be cast into the masonry or approved threaded rod may be placed in drilled holes and grouted in place. Cost of retainer and accessories are included with Precast Prestressed Concrete Deck Beams.

The permanent retainers, except the temporary Wedges shall be galvanized after shop fabrication according to AASHTO M 111 and ASTM A 385.

ANCHOR BOLTS FOR RETAINERS

Holes in the masonry for anchor bolts shall be drilled according to the manufacturer's recommendation after beams or girders have been erected and adjusted.

Prior to setting the bolts, the holes shall be dry and all dust and loose particles shall be removed by the use of compressed air or vacuuming.

The anchor bolts, furnished and installed and including the epoxy grout or capsules shall not be paid for separately but shall be included in the unit bid price for the Precast Prestressed Concrete Deck Beams (17" Depth).

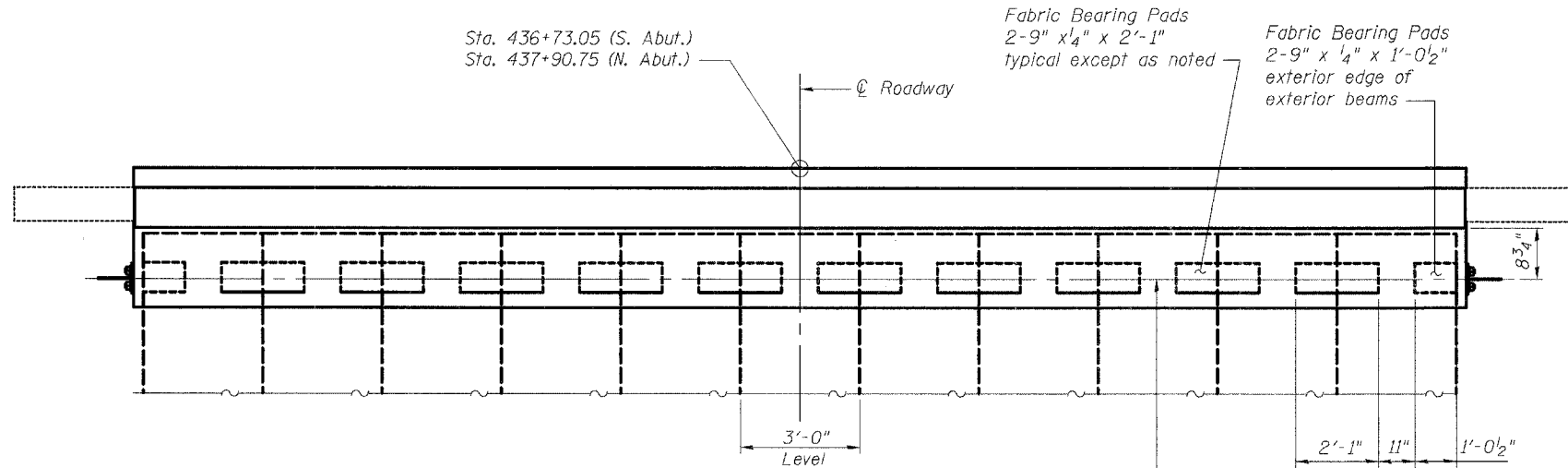
The Contractor may use, at his option, the capsule or the adhesive cartridge type anchor rods that have been previously tested and given a prior approval by the Department. The Contractor shall install these anchor rods in pre-drilled holes according to the manufacturer's recommendations and procedures.

The capsule or the adhesive cartridge type anchor rods shall be a two part system composed of:

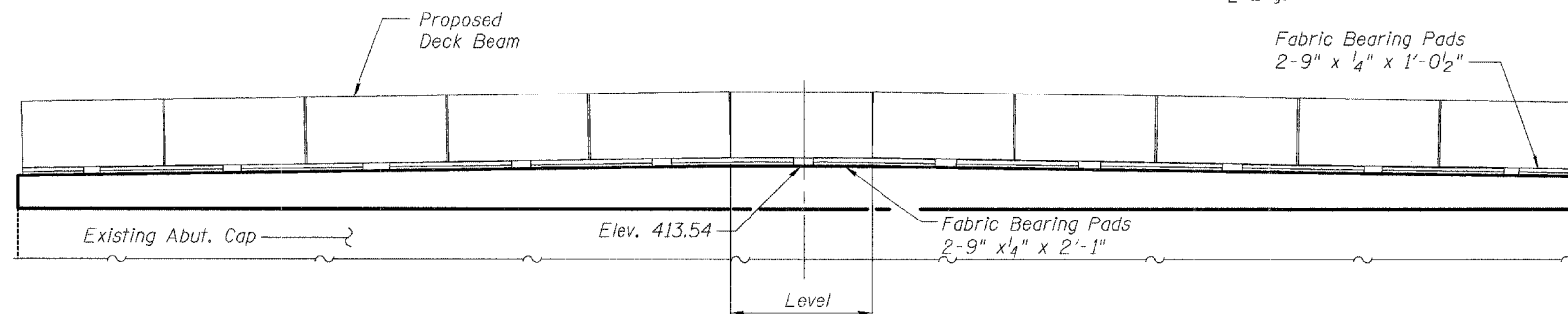
1. A threaded rod stud with nut and washer of the type specified.
2. A sealed capsule or a sealed adhesive cartridge containing premeasured amounts of the adhesive chemical.

Location	Type	Size	Embedded Depth	Retainer Type
Abut.	A325	1/2" ϕ	9 1/4"	Perm. Retainer

ASTM F 1554 Grade 105, ASTM A 449 and AASHTO M 314 Grade 105 anchor bolts may be substituted for the anchor bolts shown above.



TYPICAL ABUTMENT BEARING PAD PLAN



TYPICAL ABUTMENT BEARING PAD ELEVATION

(Concrete wearing surface not shown.)

DESIGNED	ADL
CHECKED	WLW
DRAWN	RJP
CHECKED	ADL

ABUTMENT DETAILS
F.A.P. ROUTE 592 - SECTION 28BR-2
ST. CLAIR COUNTY
STATION 437+31.90
STRUCTURE NO. 082-0212

6/13/2006

p:\0211es\020409\020409-22 w0 No11 IL13-157\SN 0 10212.dgn